

THE MURANO
PHILADELPHIA, PA

2101 MARKET STREET

±4,915 SF (DIVISIBLE) AVAILABLE FOR LEASE

JOIN
TRADER JOE'S

PRIME SPACE AVAILABLE JUNE 1ST



MetroCommercial.com | PLYMOUTH MEETING, PA | MOUNT LAUREL, NJ | MIAMI, FL | PHILADELPHIA, PA

get in touch.

SCOTT BENSON

office 215.893.0300
direct 215.282.0158

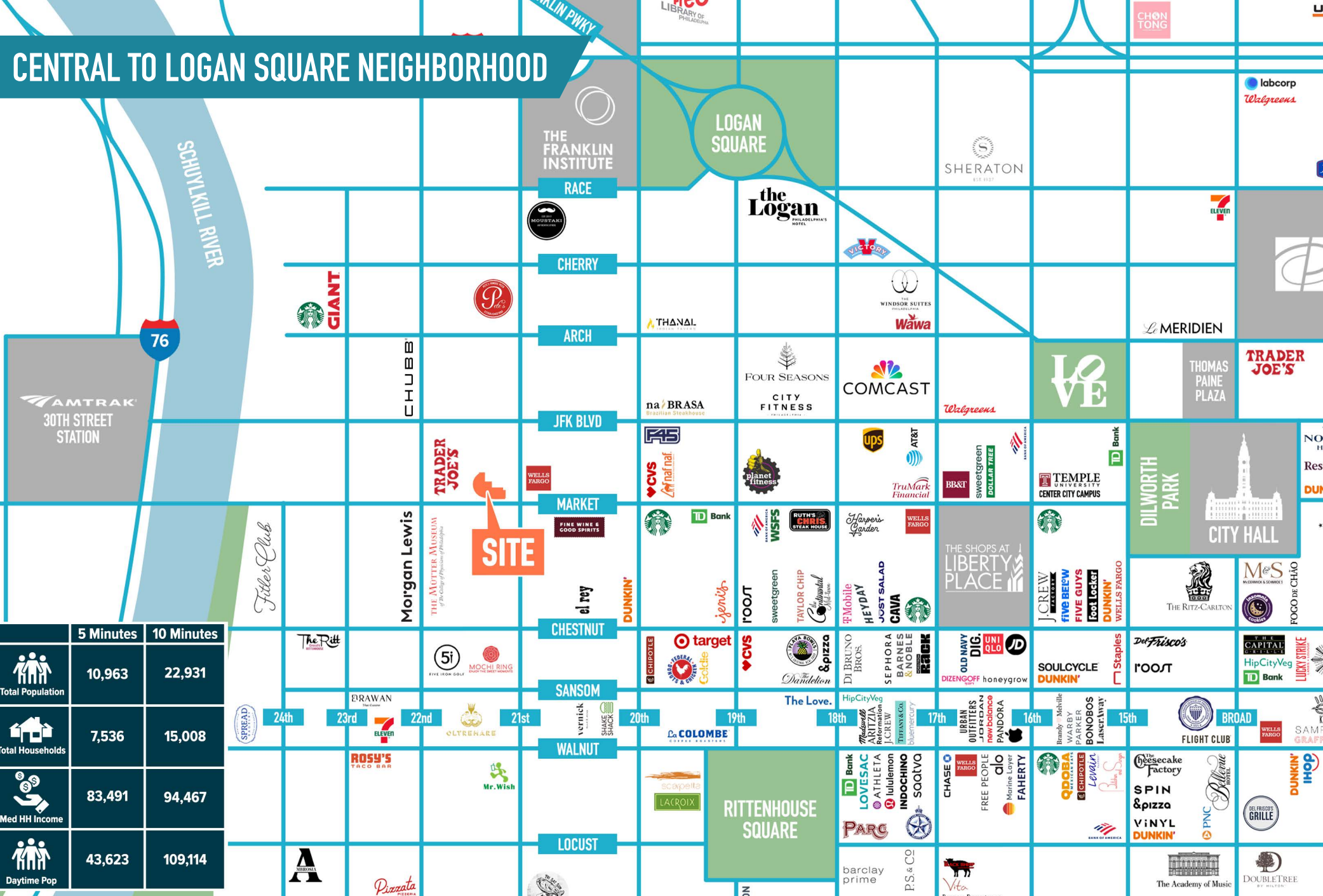
sbenson@metrocommercial.com

SHANE HART

office 215.893.0300
direct 215.282.0151

shart@metrocommercial.com

CENTRAL TO LOGAN SQUARE NEIGHBORHOOD



The information and images contained herein are from sources deemed reliable. However, Metro Commercial Real Estate, Inc. makes no representation whatsoever as to their accuracy or authenticity. Images shown may be modified for illustrative purposes. Images may be out-of-date and not current. 12.11.24

THE MURANO
PHILADELPHIA, PA
 2101 MARKET STREET



MetroCommercial.com

SURROUNDED BY NEW HQ AND RESIDENTIAL DEVELOPMENTS



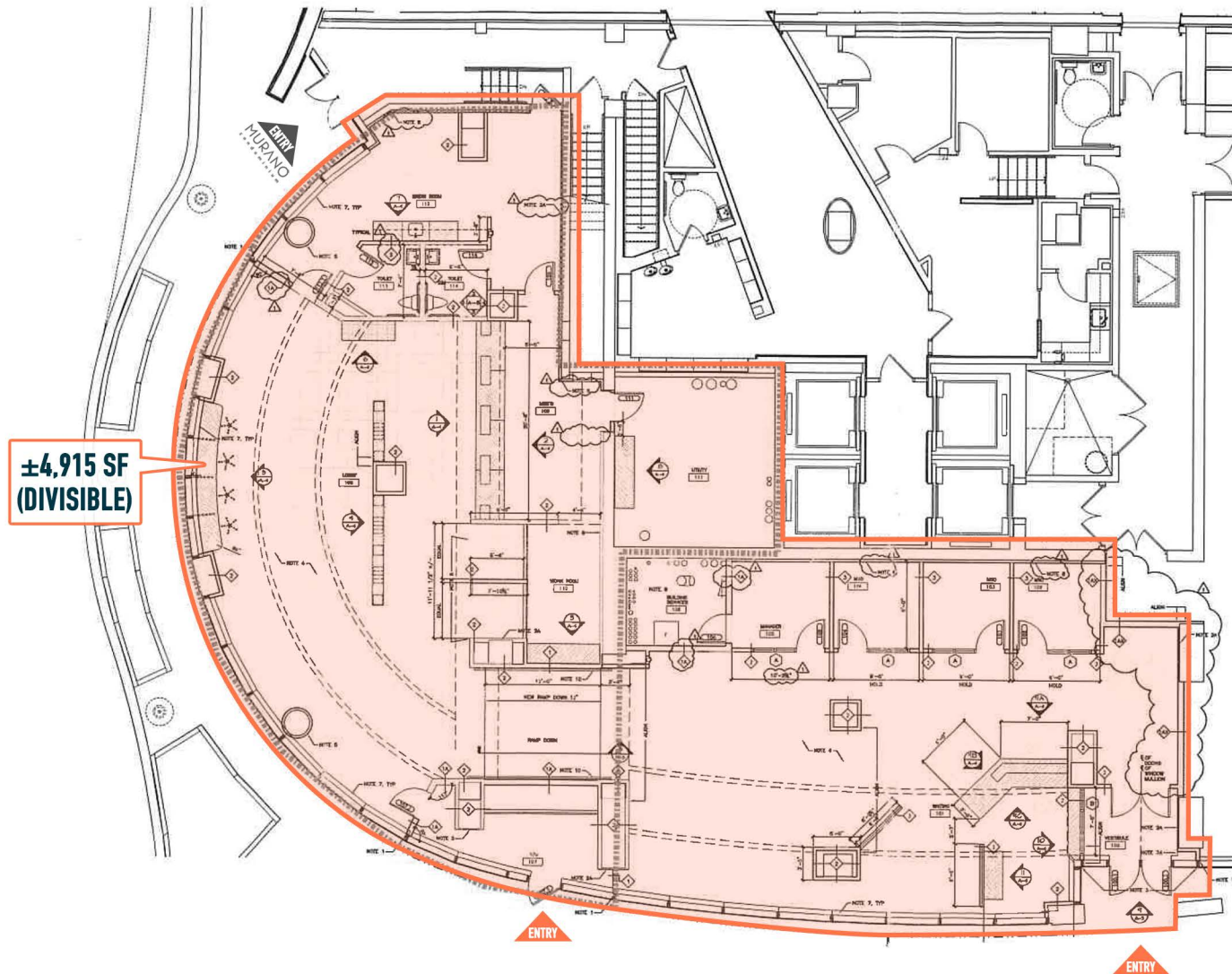
The information and images contained herein are from sources deemed reliable. However, Metro Commercial Real Estate, Inc. makes no representation whatsoever as to their accuracy or authenticity. Images shown may be modified for illustrative purposes. Images may be out-of-date and not current. 12.11.24

THE MURANO
PHILADELPHIA, PA
2101 MARKET STREET



MetroCommercial.com

FIT OUT SECOND GENERATION CREDIT UNION



±4,915 SF
(DIVISIBLE)

The information and images contained herein are from sources deemed reliable. However, Metro Commercial Real Estate, Inc. makes no representation whatsoever as to their accuracy or authenticity. Images shown may be modified for illustrative purposes. Images may be out-of-date and not current. 12.11.24

THE MURANO
PHILADELPHIA, PA
2101 MARKET STREET



MetroCommercial.com