

LUMBERTON, NJ

1558 ROUTE 38

±3.12 ACRES AVAILABLE

3 ACRES APPROVED FOR AN EXPRESS CAR WASH



MetroCommercial.com | PLYMOUTH MEETING, PA | MOUNT LAUREL, NJ | MIAMI, FL | PHILADELPHIA, PA

get in touch.

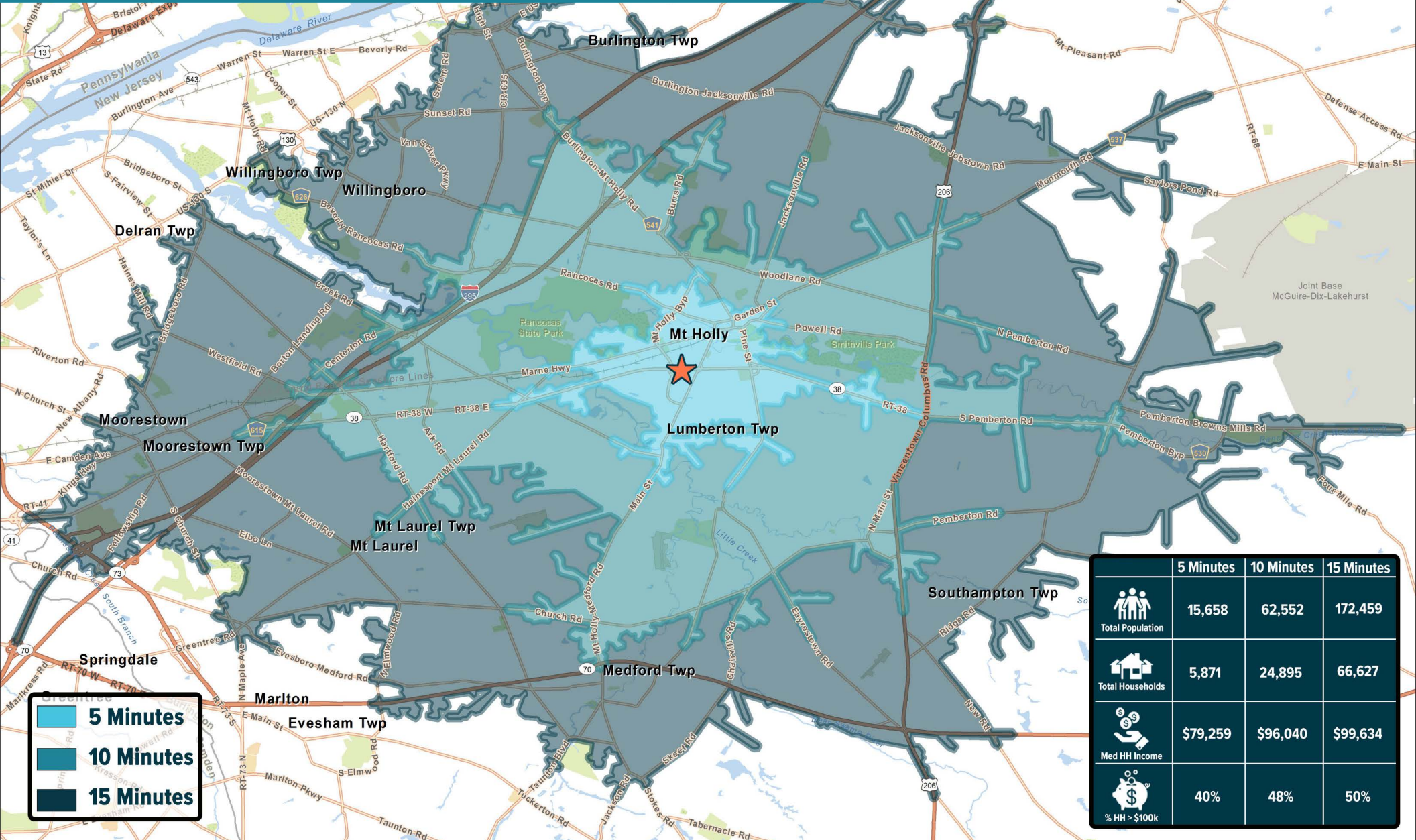
MARK GERLACH

office 856.866.1900





direct 856.222.3032

mgerlach@metrocommercial.com

32,749 TOTAL HOUSEHOLDS WITHIN A 10 MINUTE DRIVE TIME



- 5 Minutes
- 10 Minutes
- 15 Minutes

	5 Minutes	10 Minutes	15 Minutes
 Total Population	15,658	62,552	172,459
 Total Households	5,871	24,895	66,627
 Med HH Income	\$79,259	\$96,040	\$99,634
 % HH > \$100k	40%	48%	50%

The information and images contained herein are from sources deemed reliable. However, Metro Commercial Real Estate, Inc. makes no representation whatsoever as to their accuracy or authenticity. Images shown may be modified for illustrative purposes. Images may be out-of-date and not current. 06.12.23

LUMBERTON, NJ
1558 ROUTE 38



MetroCommercial.com

3 ACRE SITE APPROVED FOR AN EXPRESS CAR WASH



2 MILES

FAIRGROUND PLAZA
ACME
Staples
Advance Auto Parts
DOLLAR TREE

CROSSROADS PLAZA
Lowe's
ShopRite
Wawa

Miller
Ford
Star

LUMBERTON PLAZA
ALDI
BIG LOTS!
RITE AID
H&R BLOCK
FAMILY DOLLAR

GOODYEAR
enterprise

DOLLAR TREE
HARBOR FREIGHT
jaron's

TRACTOR SUPPLY CO

SITE

LUCAS CHEVROLET
LUCAS CHEVROLET

PNC
McDonald's

Walmart

WELLINGTON FARMS
396 RESIDENTIAL UNITS
AND PROPOSED COMMERCIAL

The information and images contained herein are from sources deemed reliable. However, Metro Commercial Real Estate, Inc. makes no representation whatsoever as to their accuracy or authenticity. Images shown may be modified for illustrative purposes. Images may be out-of-date and not current. 06.12.23

ZONING: HIGHWAY BUSINESS DISTRICT (B-2)



MT HOLLY BYPASS 32,530 VPD

38 41,635 VPD

MAIN ST

REPUBLIC BANK

CALIBER COLLISION

Laurel Tree Academy
A Great Place to Grow

FINISH LINE

CVS pharmacy

±3.12 AC

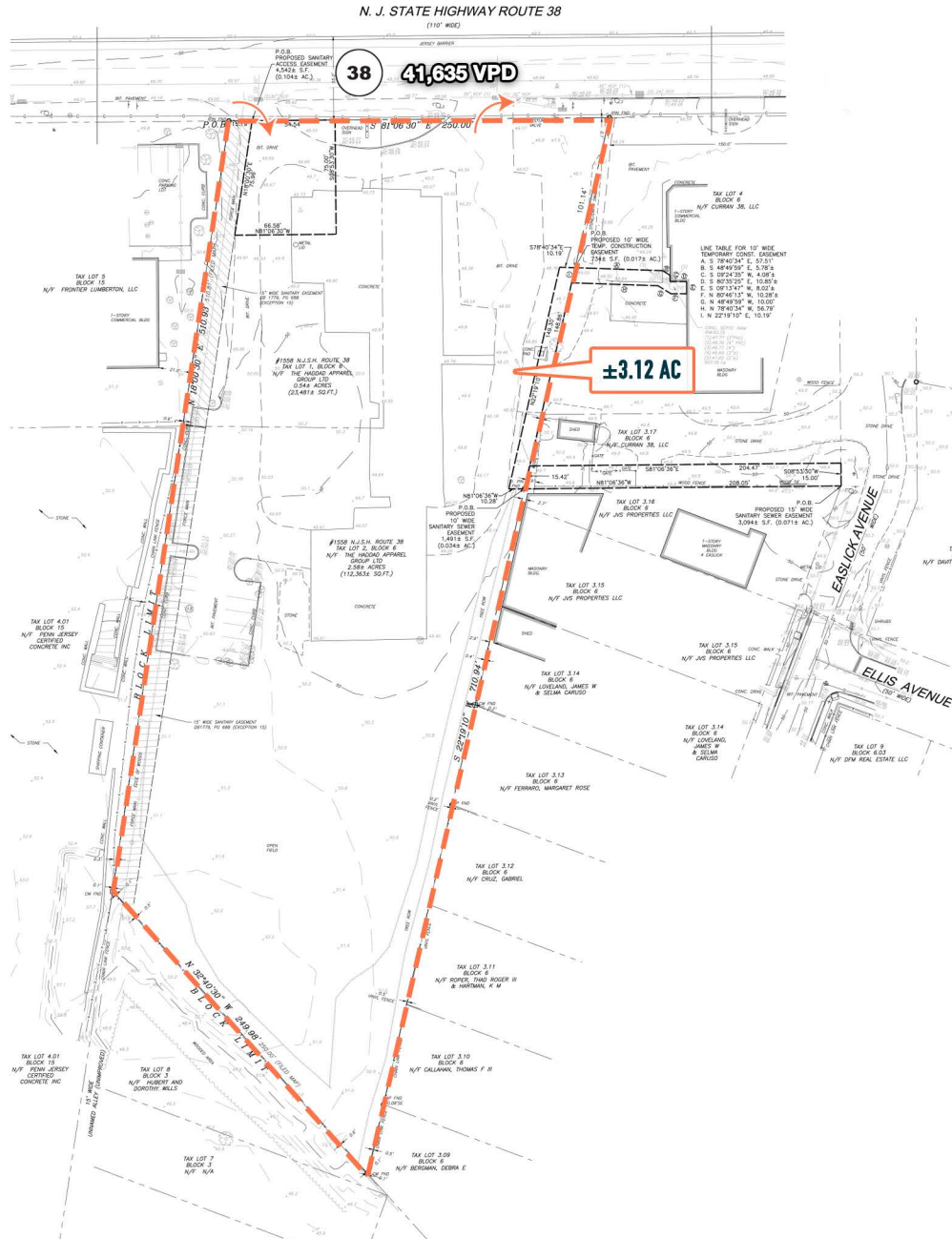
The information and images contained herein are from sources deemed reliable. However, Metro Commercial Real Estate, Inc. makes no representation whatsoever as to their accuracy or authenticity. Images shown may be modified for illustrative purposes. Images may be out-of-date and not current. 06.12.23

LUMBERTON, NJ
1558 ROUTE 38



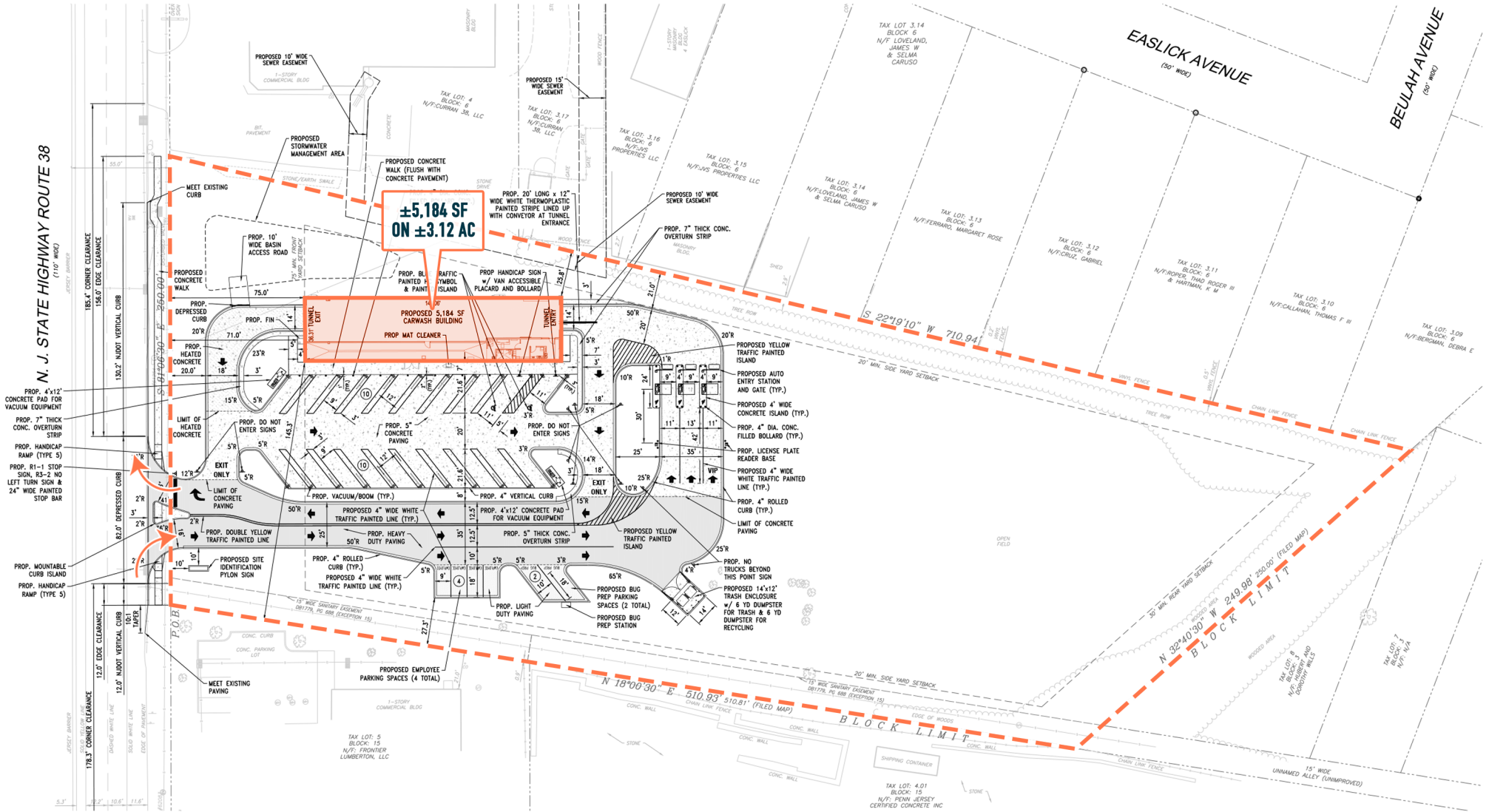
MetroCommercial.com

EXISTING SITE PLAN



The information and images contained herein are from sources deemed reliable. However, Metro Commercial Real Estate, Inc. makes no representation whatsoever as to their accuracy or authenticity. Images shown may be modified for illustrative purposes. Images may be out-of-date and not current. 06.12.23

PROPOSED PLAN: CAR WASH



The information and images contained herein are from sources deemed reliable. However, Metro Commercial Real Estate, Inc. makes no representation whatsoever as to their accuracy or authenticity. Images shown may be modified for illustrative purposes. Images may be out-of-date and not current. 06.12.23

LUMBERTON, NJ
1558 ROUTE 38



MetroCommercial.com