

# LANSDALE, PA

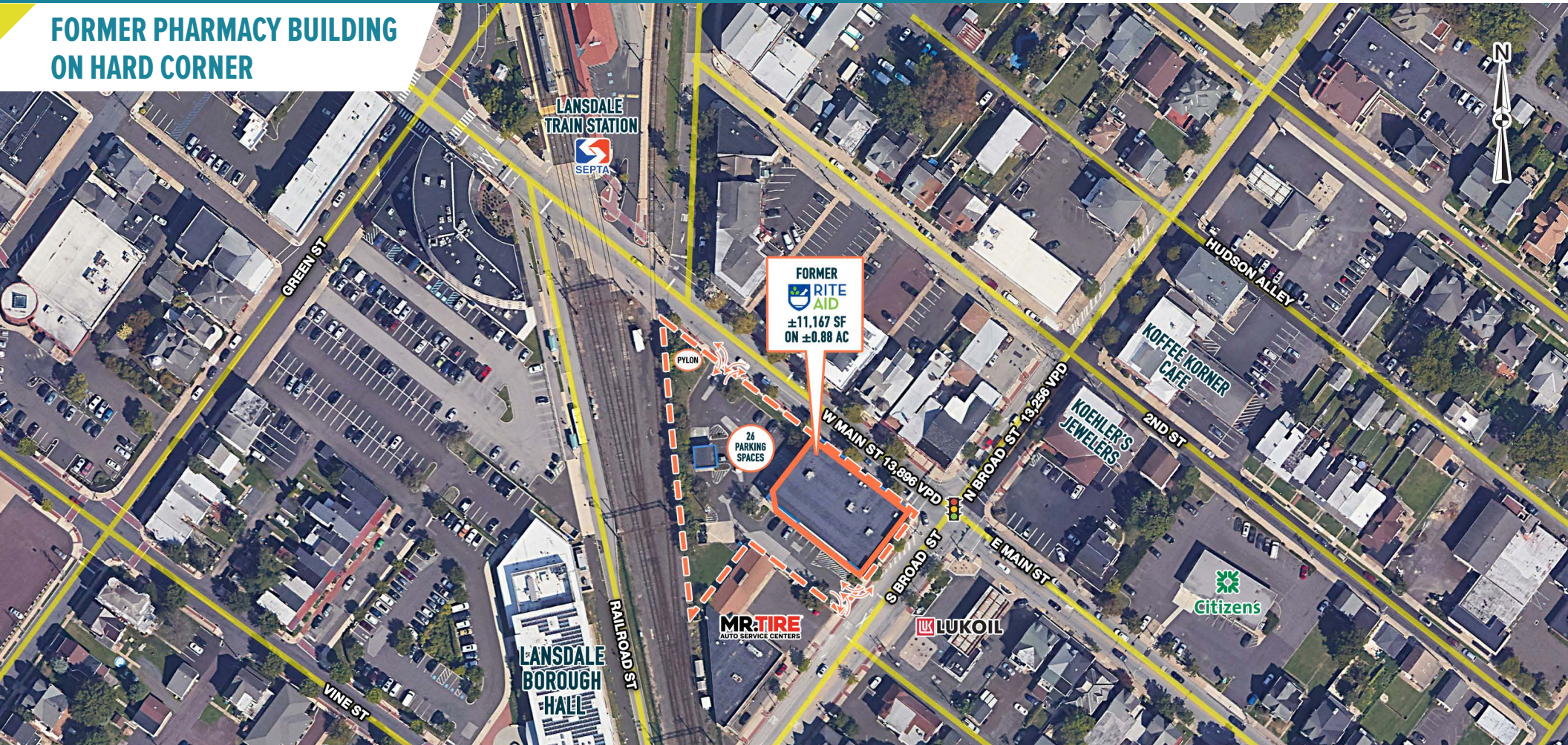
10 W MAIN STREET

±11,167 SF ON ±0.88 AC AVAILABLE FOR LEASE

PHILADELPHIA MSA

## REDEVELOPMENT OPPORTUNITY!

### FORMER PHARMACY BUILDING ON HARD CORNER



MetroCommercial.com | PLYMOUTH MEETING, PA | MOUNT LAUREL, NJ | MIAMI, FL | PHILADELPHIA, PA

### get in touch.

**DAVID JUDD**

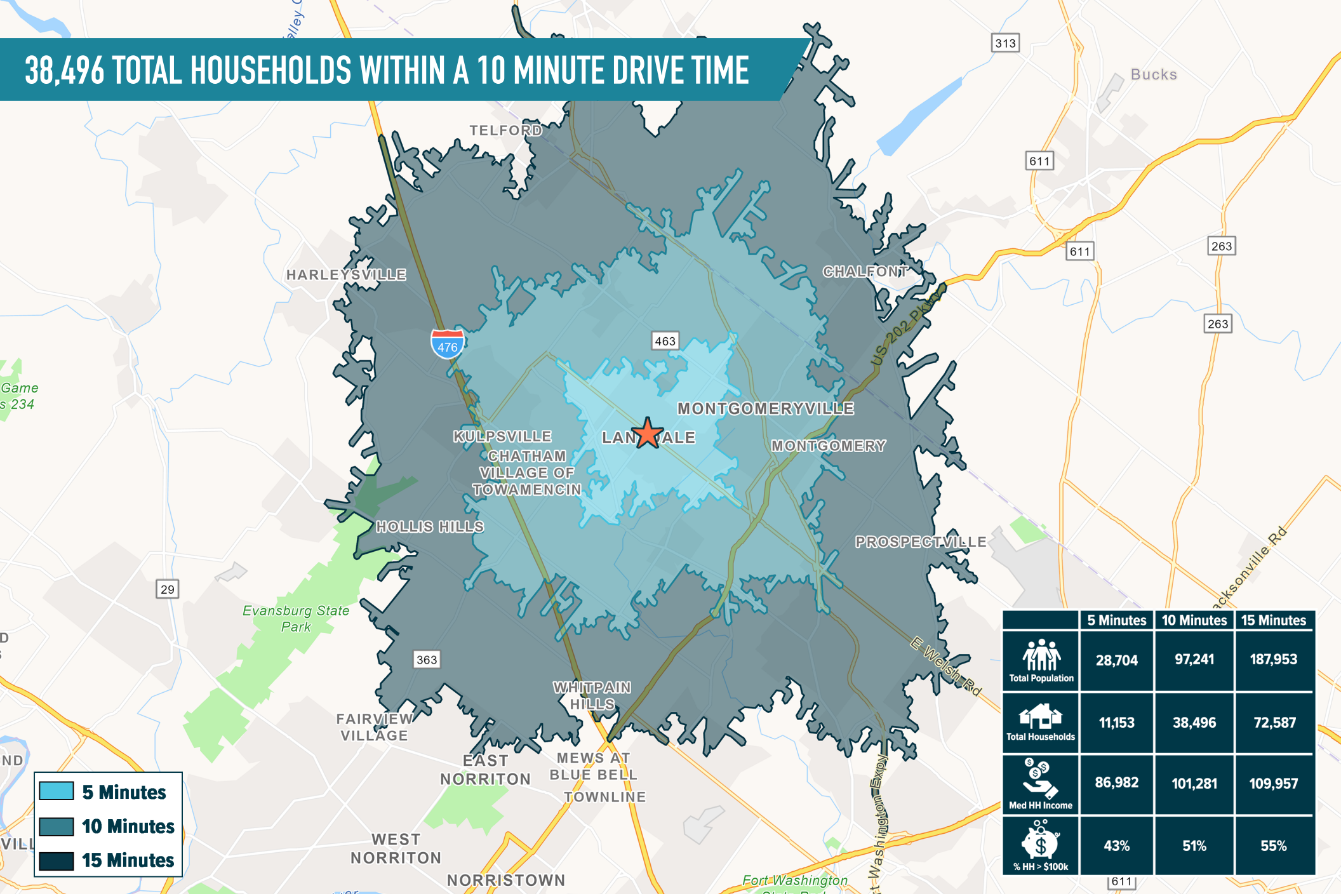
office 856.866.1900  
direct 856.222.3037  
djudd@metrocommercial.com

**JOE DOUGHERTY**

office 610.825.5222  
direct 610.260.2670  
jdougherty@metrocommercial.com



# 38,496 TOTAL HOUSEHOLDS WITHIN A 10 MINUTE DRIVE TIME



■ 5 Minutes  
■ 10 Minutes  
■ 15 Minutes

	5 Minutes	10 Minutes	15 Minutes
Total Population	28,704	97,241	187,953
Total Households	11,153	38,496	72,587
Med HH Income	86,982	101,281	109,957
% HH > \$100k	43%	51%	55%

The information and images contained herein are from sources deemed reliable. However, Metro Commercial Real Estate, Inc. makes no representation whatsoever as to their accuracy or authenticity. Images shown may be modified for illustrative purposes. Images may be out-of-date and not current. 01.09.25

**LANSDALE, PA**  
 10 W MAIN STREET



MetroCommercial.com



# CLOSE PROXIMITY TO DENSE RESIDENTIAL



The information and images contained herein are from sources deemed reliable. However, Metro Commercial Real Estate, Inc. makes no representation whatsoever as to their accuracy or authenticity. Images shown may be modified for illustrative purposes. Images may be out-of-date and not current. 01.09.25

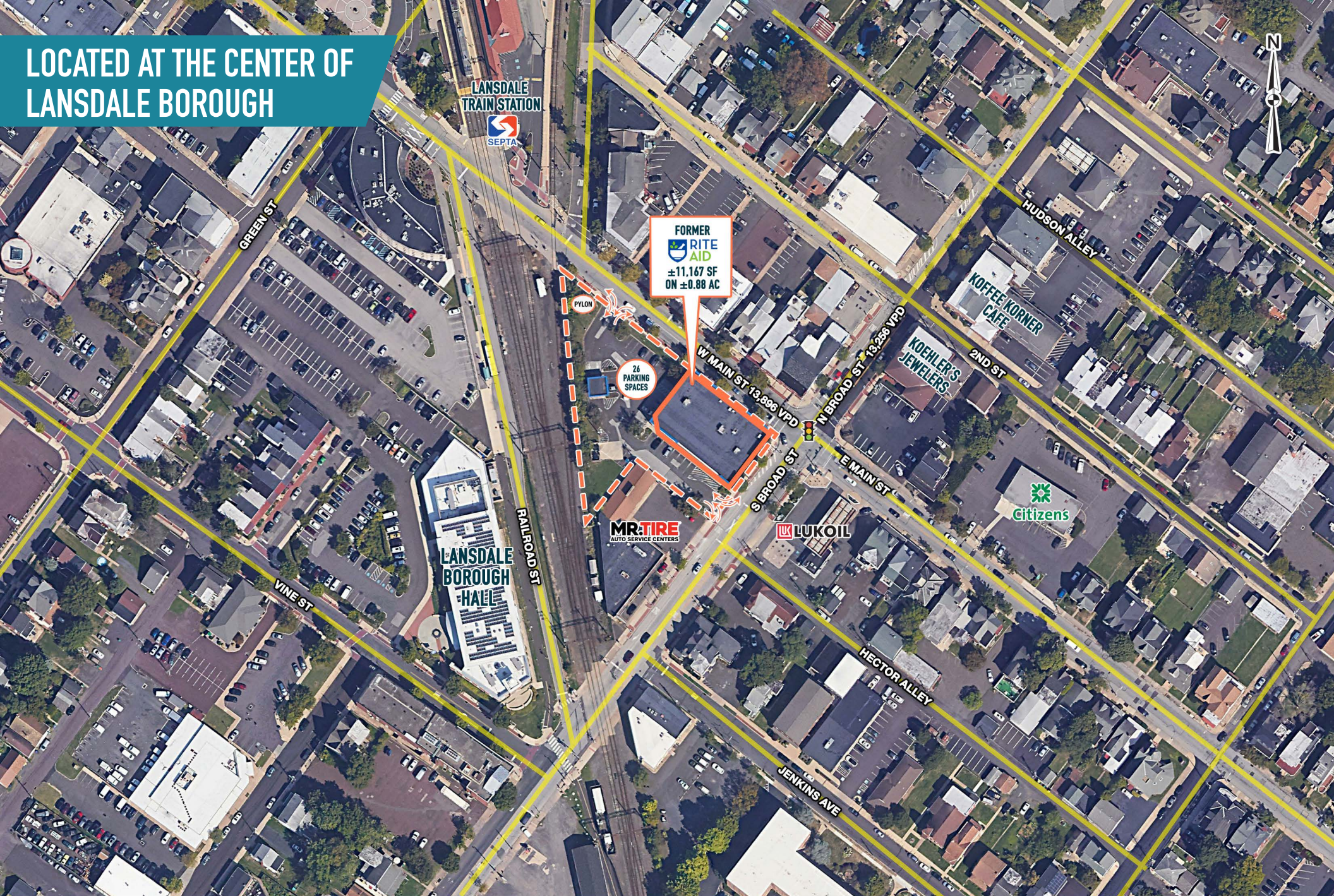
**LANSDALE, PA**  
10 W MAIN STREET



MetroCommercial.com



# LOCATED AT THE CENTER OF LANSDALE BOROUGH



The information and images contained herein are from sources deemed reliable. However, Metro Commercial Real Estate, Inc. makes no representation whatsoever as to their accuracy or authenticity. Images shown may be modified for illustrative purposes. Images may be out-of-date and not current. 01.09.23

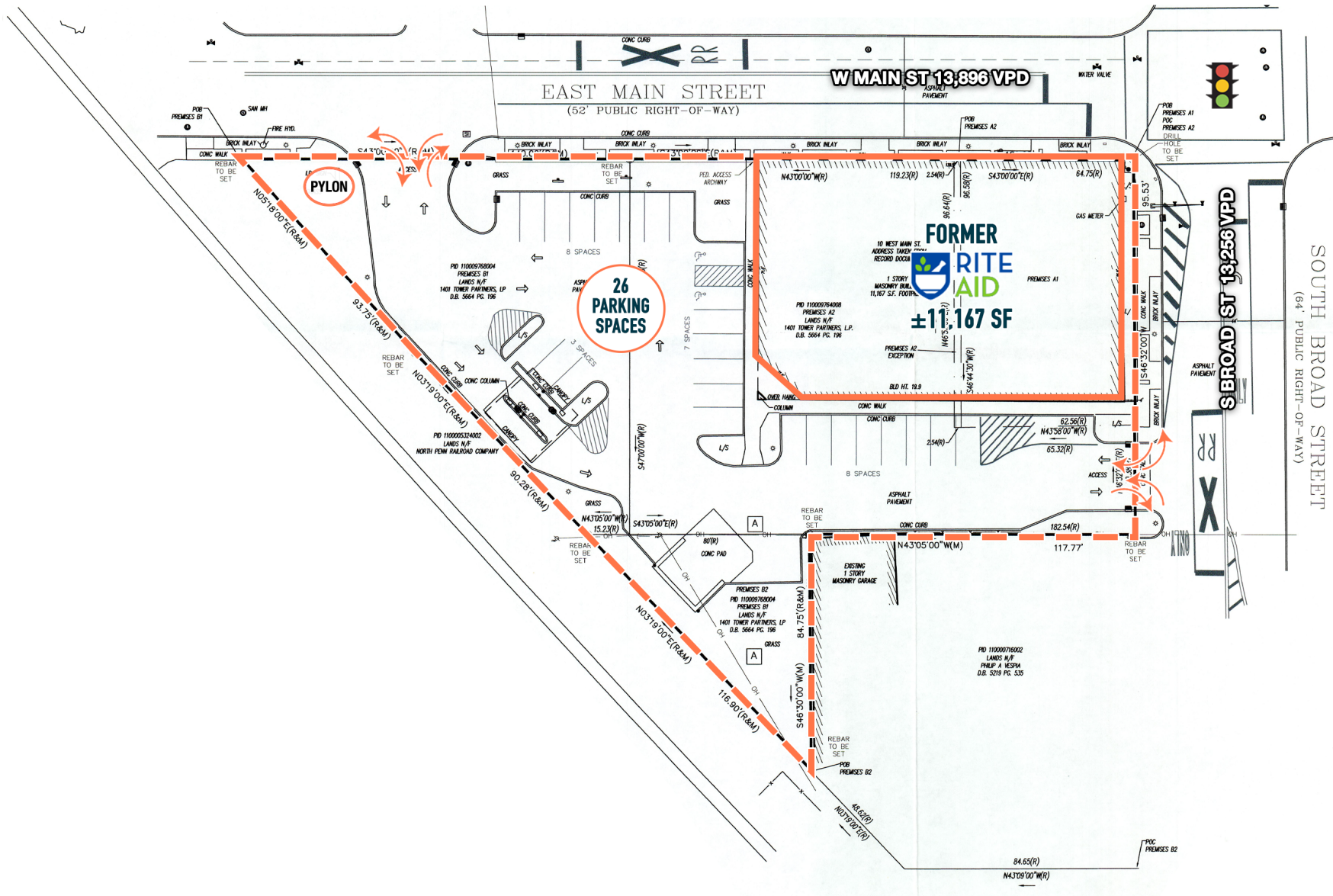
**LANSDALE, PA**  
10 W MAIN STREET



MetroCommercial.com



# PROMINENT VISIBILITY



The information and images contained herein are from sources deemed reliable. However, Metro Commercial Real Estate, Inc. makes no representation whatsoever as to their accuracy or authenticity. Images shown may be modified for illustrative purposes. Images may be out-of-date and not current. 01.09.25