

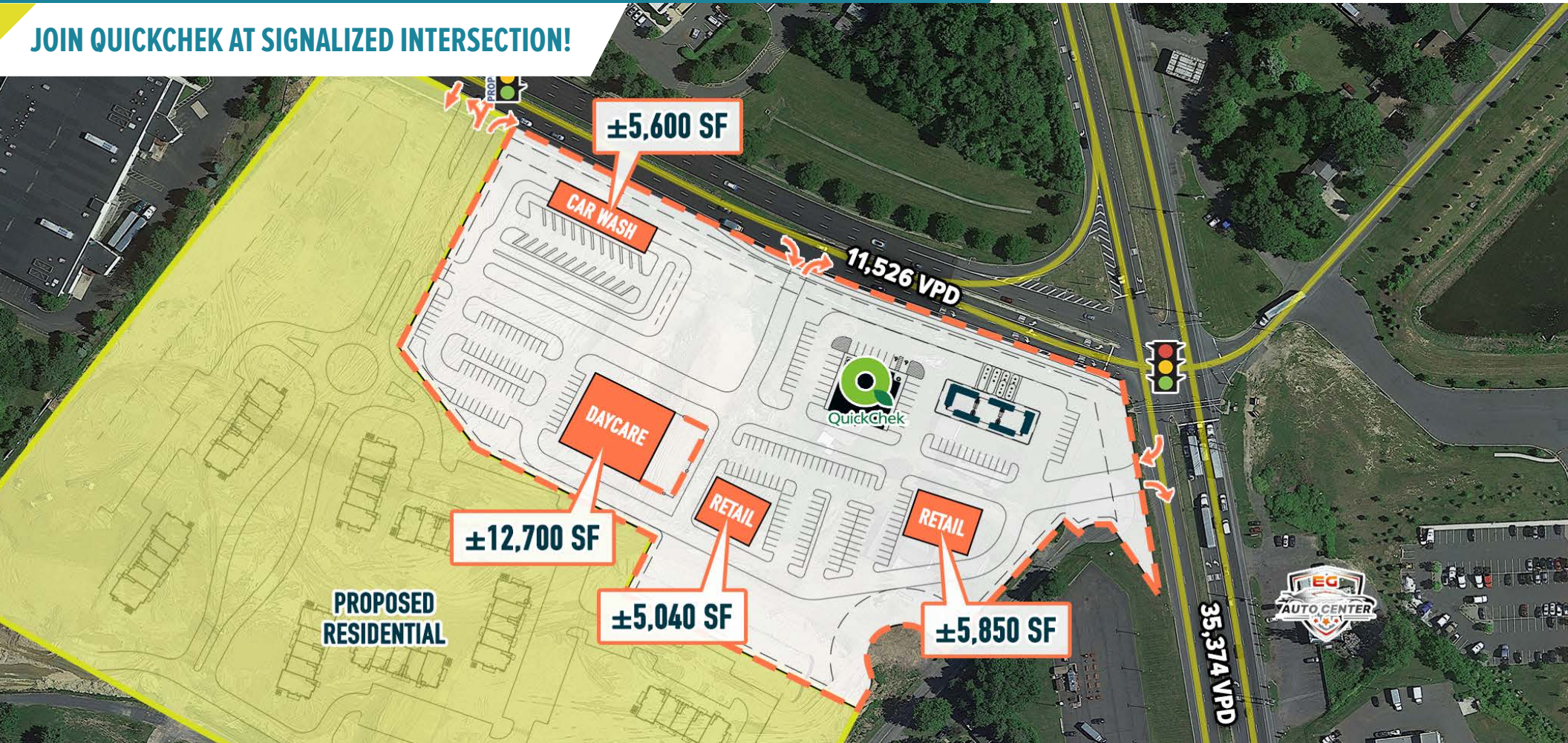
MONMOUTH JUNCTION, NJ

89-65 COUNTY ROAD 610

±1,700 - 12,700 SF FOR LEASE; GLA: ±38,270 SF

NEW
DEVELOPMENT
OPPORTUNITY!

JOIN QUICKCHEK AT SIGNALIZED INTERSECTION!



MetroCommercial.com | PLYMOUTH MEETING, PA | MOUNT LAUREL, NJ | MIAMI, FL | PHILADELPHIA, PA

get in touch.

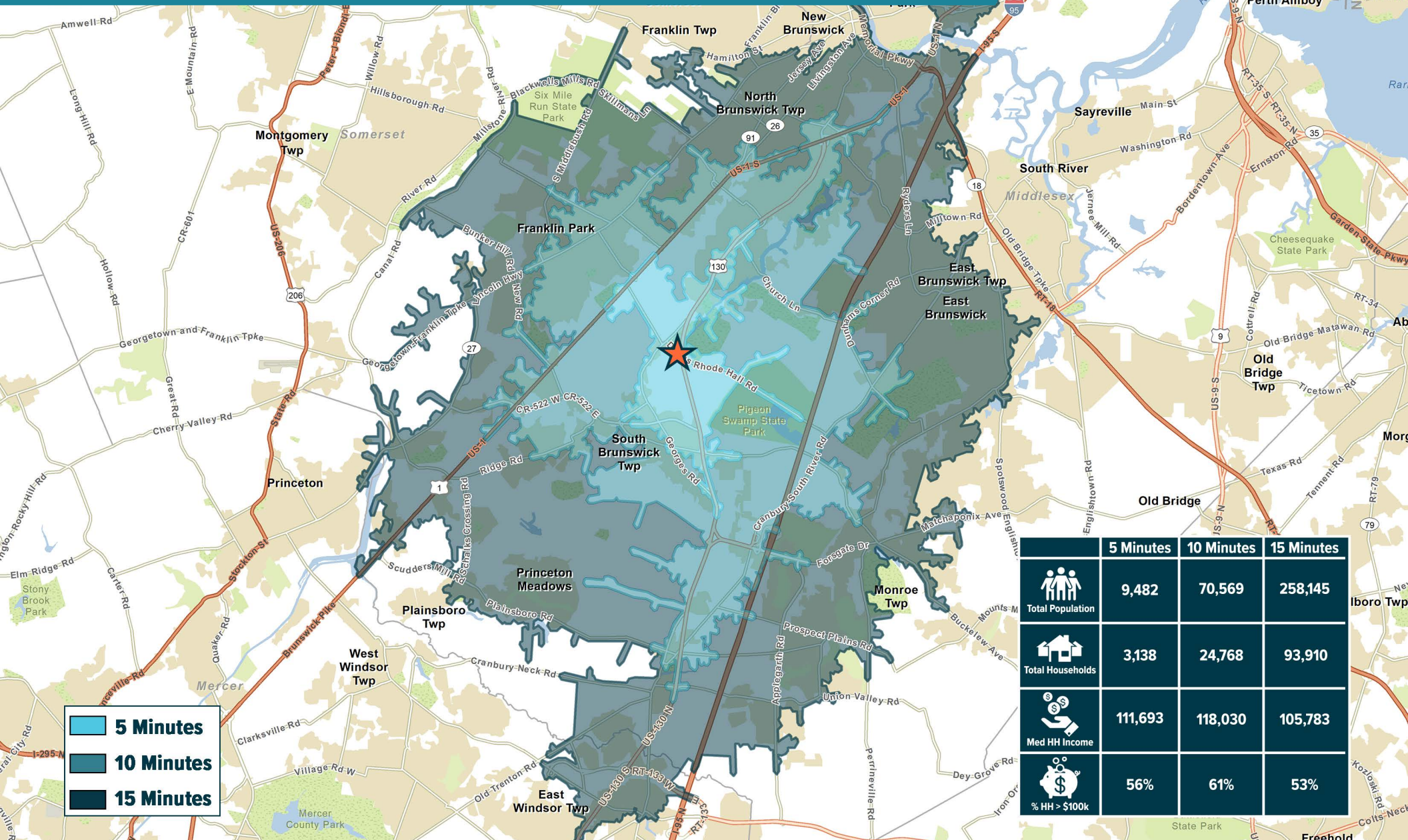
JONATHAN SPOERL

office 215.893.0300
direct 215.282.0157
jspoerl@metrocommercial.com

MAX SILVER

office 610.825.5222
direct 610.260.2672
msilver@metrocommercial.com

SURROUNDED BY DENSELY POPULATED AREA WITHIN 15 MINUTE DRIVE TIME



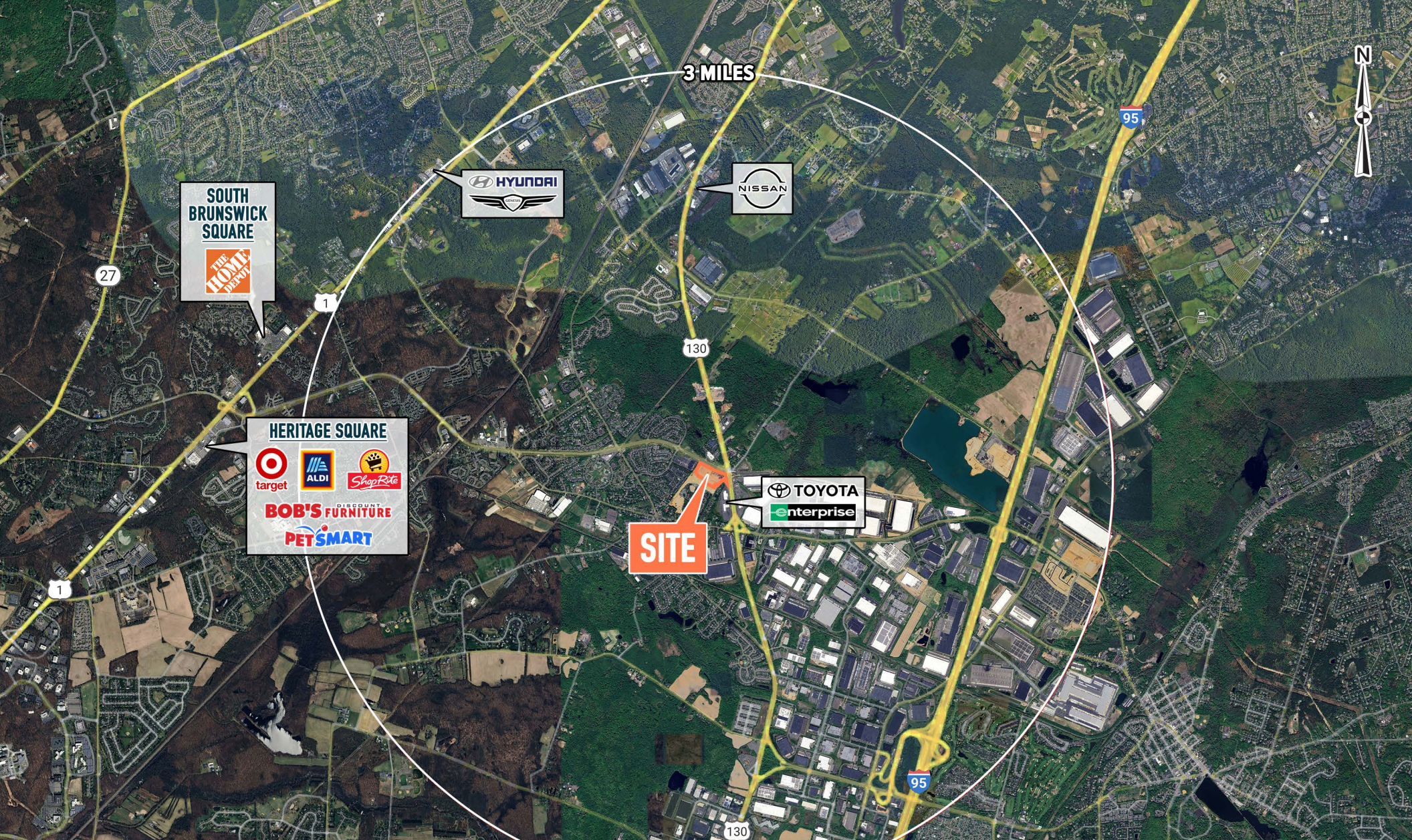
	5 Minutes	10 Minutes	15 Minutes
Total Population	9,482	70,569	258,145
Total Households	3,138	24,768	93,910
Med HH Income	111,693	118,030	105,783
% HH > \$100k	56%	61%	53%

The information and images contained herein are from sources deemed reliable. However, Metro Commercial Real Estate, Inc. makes no representation whatsoever as to their accuracy or authenticity. Images shown may be modified for illustrative purposes. Images may be out-of-date and not current. 11.08.24

MONMOUTH JUNCTION, NJ
89-65 COUNTY ROAD 610



MetroCommercial.com



3 MILES

SOUTH BRUNSWICK SQUARE
THE HOME DEPOT

HYUNDAI

NISSAN

HERITAGE SQUARE
target
ALDI
ShopRite
BOB'S DISCOUNT FURNITURE
PETSMART

SITE

TOYOTA
enterprise

LOCATED ALONG ROUTE 130 CORRIDOR WITH STRONG DAYTIME POPULATION

The information and images contained herein are from sources deemed reliable. However, Metro Commercial Real Estate, Inc. makes no representation whatsoever as to their accuracy or authenticity. Images shown may be modified for illustrative purposes. Images may be out-of-date and not current. 11.08.24

MONMOUTH JUNCTION, NJ
89-65 COUNTY ROAD 610



MetroCommercial.com

SITUATED AT SIGNALIZED INTERSECTION ALONG ROUTE 130 WITH FULL ACCESS ON ROUTE 522



The information and images contained herein are from sources deemed reliable. However, Metro Commercial Real Estate, Inc. makes no representation whatsoever as to their accuracy or authenticity. Images shown may be modified for illustrative purposes. Images may be out-of-date and not current. 11.08.24

MONMOUTH JUNCTION, NJ
89-65 COUNTY ROAD 610



MetroCommercial.com

SITE PLAN



The information and images contained herein are from sources deemed reliable. However, Metro Commercial Real Estate, Inc. makes no representation whatsoever as to their accuracy or authenticity. Images shown may be modified for illustrative purposes. Images may be out-of-date and not current. 11.08.24

MONMOUTH JUNCTION, NJ
89-65 COUNTY ROAD 610



MetroCommercial.com