

LACEY MALL  
**FORKED RIVER, NJ**

ROUTE 9 & FIRST STREET

±1,307 & 1,680 SF SPACES AVAILABLE FOR LEASE; GLA: ±130,000 SF

JOIN



DOLLAR TREE



MATTRESS FIRM

SMALL SHOP SPACES AVAILABLE AT HIGH VOLUME SHOPRITE ANCHORED CENTER

OVER 2.1 MILLION ANNUAL VISITS  
ACCORDING TO PLACER.AI



**METRO**<sup>®</sup>  
COMMERCIAL  
REAL ESTATE, INC.

MetroCommercial.com | PLYMOUTH MEETING, PA | MOUNT LAUREL, NJ | MIAMI, FL | PHILADELPHIA, PA

get in touch.

**SHANE HART**

office 215.893.0300  
direct 215.282.0151  
shart@metrocommercial.com

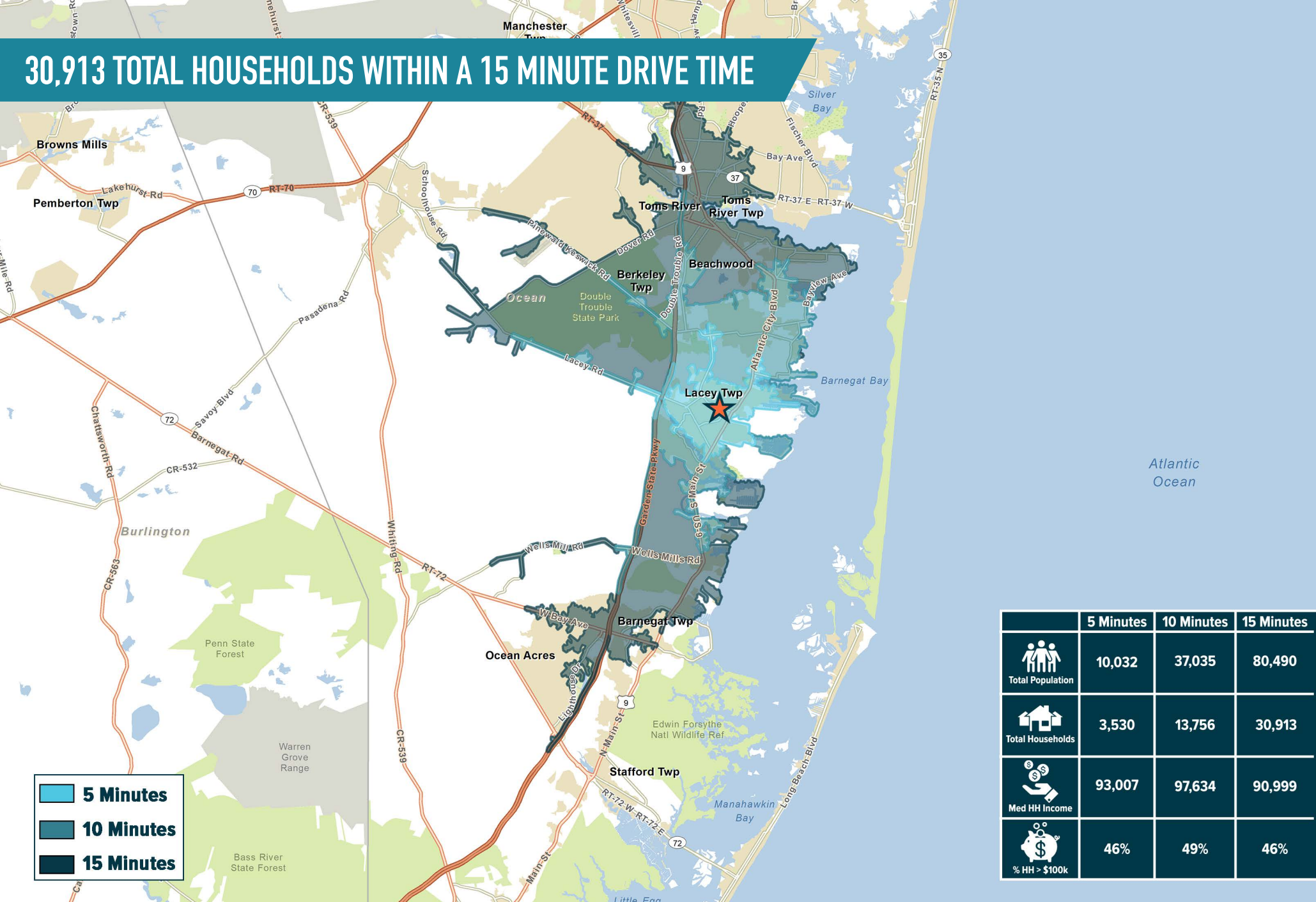
**BRENDAN MULLIGAN**

office 610.825.5222  
direct 610.260.2688  
bmulligan@metrocommercial.com

**JOE DOUGHERTY**

office 610.825.5222  
direct 610.260.2670  
jdougherty@metrocommercial.com

# 30,913 TOTAL HOUSEHOLDS WITHIN A 15 MINUTE DRIVE TIME



The information and images contained herein are from sources deemed reliable. However, Metro Commercial Real Estate, Inc. makes no representation whatsoever as to their accuracy or authenticity. Images shown may be modified for illustrative purposes. Images may be out-of-date and not current. 12.17.24

LACEY MALL  
**FORKED RIVER, NJ**  
 ROUTE 9 & FIRST STREET



MetroCommercial.com

# DOMINANT GROCERY ANCHORED CENTER IN TRADE AREA



The information and images contained herein are from sources deemed reliable. However, Metro Commercial Real Estate, Inc. makes no representation whatsoever as to their accuracy or authenticity. Images shown may be modified for illustrative purposes. Images may be out-of-date and not current. 12.17.24

LACEY MALL  
**FORKED RIVER, NJ**  
ROUTE 9 & FIRST STREET



MetroCommercial.com

# EXCELLENT VISIBILITY FROM ROUTE 9 – THE MAIN NORTH-SOUTH THOROUGHFARE IN OCEAN COUNTY



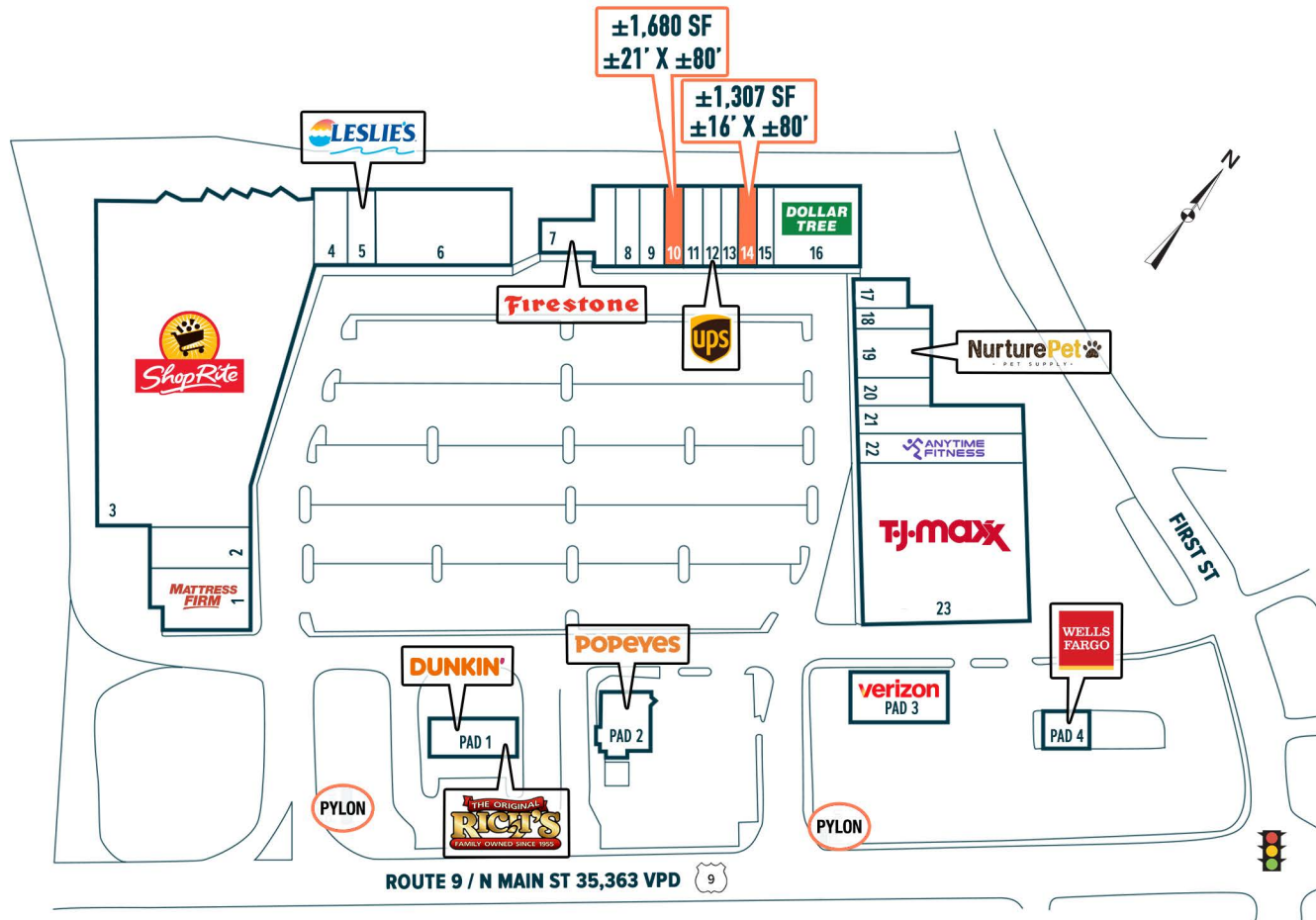
The information and images contained herein are from sources deemed reliable. However, Metro Commercial Real Estate, Inc. makes no representation whatsoever as to their accuracy or authenticity. Images shown may be modified for illustrative purposes. Images may be out-of-date and not current. 12.17.24

LACEY MALL  
**FORKED RIVER, NJ**  
 ROUTE 9 & FIRST STREET



MetroCommercial.com

# TARGETING FAST CASUAL, OPTICAL, PHYSICAL THERAPY, URGENT CARE, AND OTHER RETAIL OR MEDICAL TENANTS



SPACE	TENANT	SF
1	MATTRESS FIRM	7,600
2	BEAUTY SUPPLIES	2,561
3	SHOPRITE	64,092
4	CARDSMART	3,200
5	LESLIE'S	3,200
6	BEST TILE	9,400
7	FIRESTONE	3,760
8	CLEANERS	1,680
9	HAND & STONE	2,020
10	AVAILABLE	1,680
11	KARATE	2,080
12	THE UPS STORE	1,600
13	MOTLEY HAIR STUDIO	1,200
14	AVAILABLE	1,307
15	LACEY NAILS	1,213
16	DOLLAR TREE	7,455
17	TACO-TASTIC	1,800
18	PIZZA	1,760
19	NURTUREPET	3,880
20	CANDY SHOP	2,400
21	WINES & SPIRITS	6,000
22	ANYTIME FITNESS	6,844
23	T.J. MAXX	26,000
PAD 1	DUNKIN' & THE ORIGINAL RICH'S ICE CREAM	3,038
PAD 2	POPEYES	3,250
PAD 3	VERIZON	4,968
PAD 4	WELLS FARGO	

The information and images contained herein are from sources deemed reliable. However, Metro Commercial Real Estate, Inc. makes no representation whatsoever as to their accuracy or authenticity. Images shown may be modified for illustrative purposes. Images may be out-of-date and not current. 12.17.24

LACEY MALL  
**FORKED RIVER, NJ**  
 ROUTE 9 & FIRST STREET



MetroCommercial.com

# PROPERTY PHOTOS



The information and images contained herein are from sources deemed reliable. However, Metro Commercial Real Estate, Inc. makes no representation whatsoever as to their accuracy or authenticity. Images shown may be modified for illustrative purposes. Images may be out-of-date and not current. 12.17.24

LACEY MALL  
FORKED RIVER, NJ  
ROUTE 9 & FIRST STREET



MetroCommercial.com

# PROPERTY PHOTOS

**STOREFRONT**  
±1,680 SF (SPACE 10)



**STOREFRONT**  
±1,307 SF (SPACE 14)



**INTERIOR**



**INTERIOR**



The information and images contained herein are from sources deemed reliable. However, Metro Commercial Real Estate, Inc. makes no representation whatsoever as to their accuracy or authenticity. Images shown may be modified for illustrative purposes. Images may be out-of-date and not current. 12.17.24

LACEY MALL  
**FORKED RIVER, NJ**  
ROUTE 9 & FIRST STREET



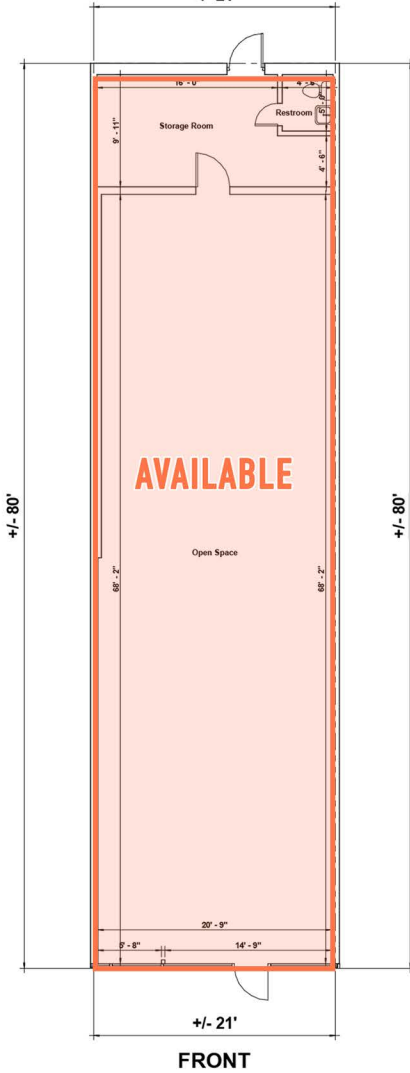
MetroCommercial.com

±1,680 SF (SPACE 10)

±21' X ±80'

REAR

+/- 21'

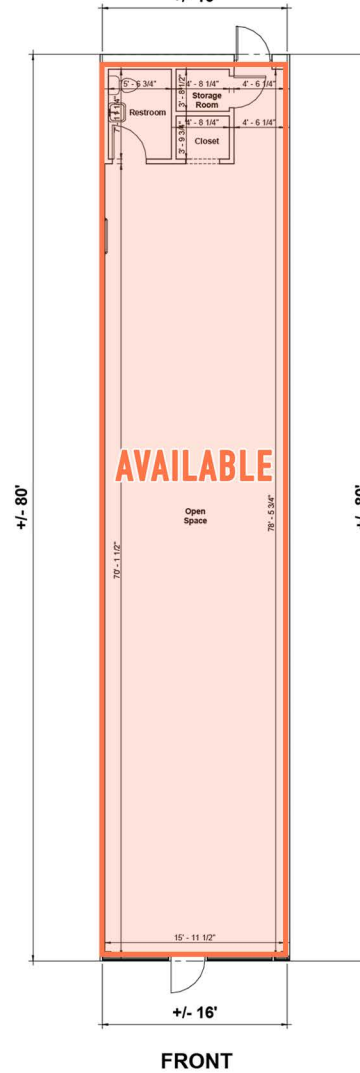


±1,307 SF (SPACE 14)

±16' X ±80'

REAR

+/- 16'



The information and images contained herein are from sources deemed reliable. However, Metro Commercial Real Estate, Inc. makes no representation whatsoever as to their accuracy or authenticity. Images shown may be modified for illustrative purposes. Images may be out-of-date and not current. 12.17.24