

ROUTE 22 RETAIL CENTER
UNION, NJ

2700 US 22

±16,363 SF AVAILABLE FOR LEASE

JOIN



JUNIOR BOX AVAILABILITY ON BUSY ROUTE 22



MetroCommercial.com | PLYMOUTH MEETING, PA | MOUNT LAUREL, NJ | MIAMI, FL | PHILADELPHIA, PA

get in touch.

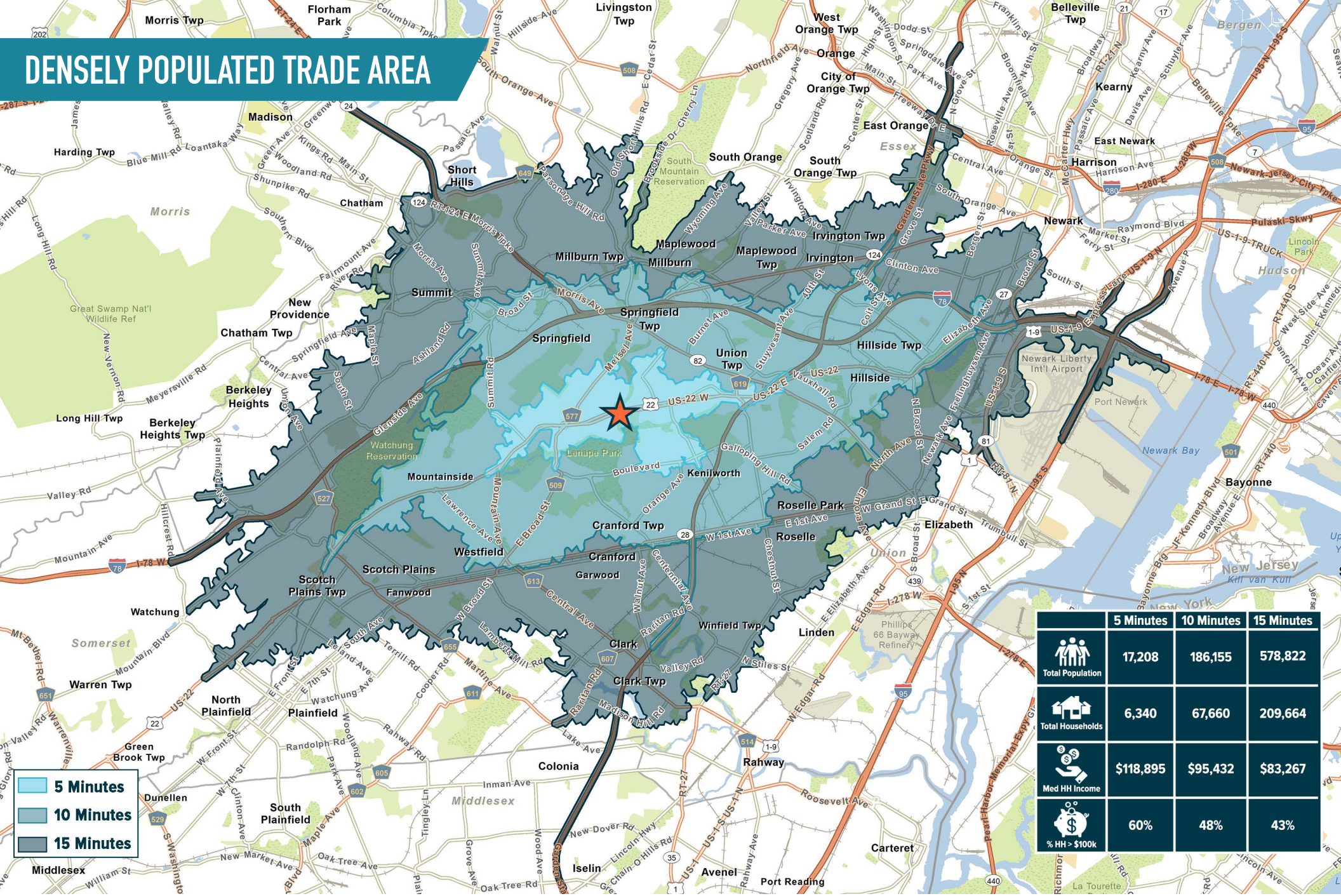
DAVID JUDD

office 856.866.1900
direct 856.222.3037
djudd@metrocommercial.com

JOE DOUGHERTY

office 610.825.5222
direct 610.260.2670
jdougherty@metrocommercial.com

DENSELY POPULATED TRADE AREA



■ 5 Minutes
■ 10 Minutes
■ 15 Minutes

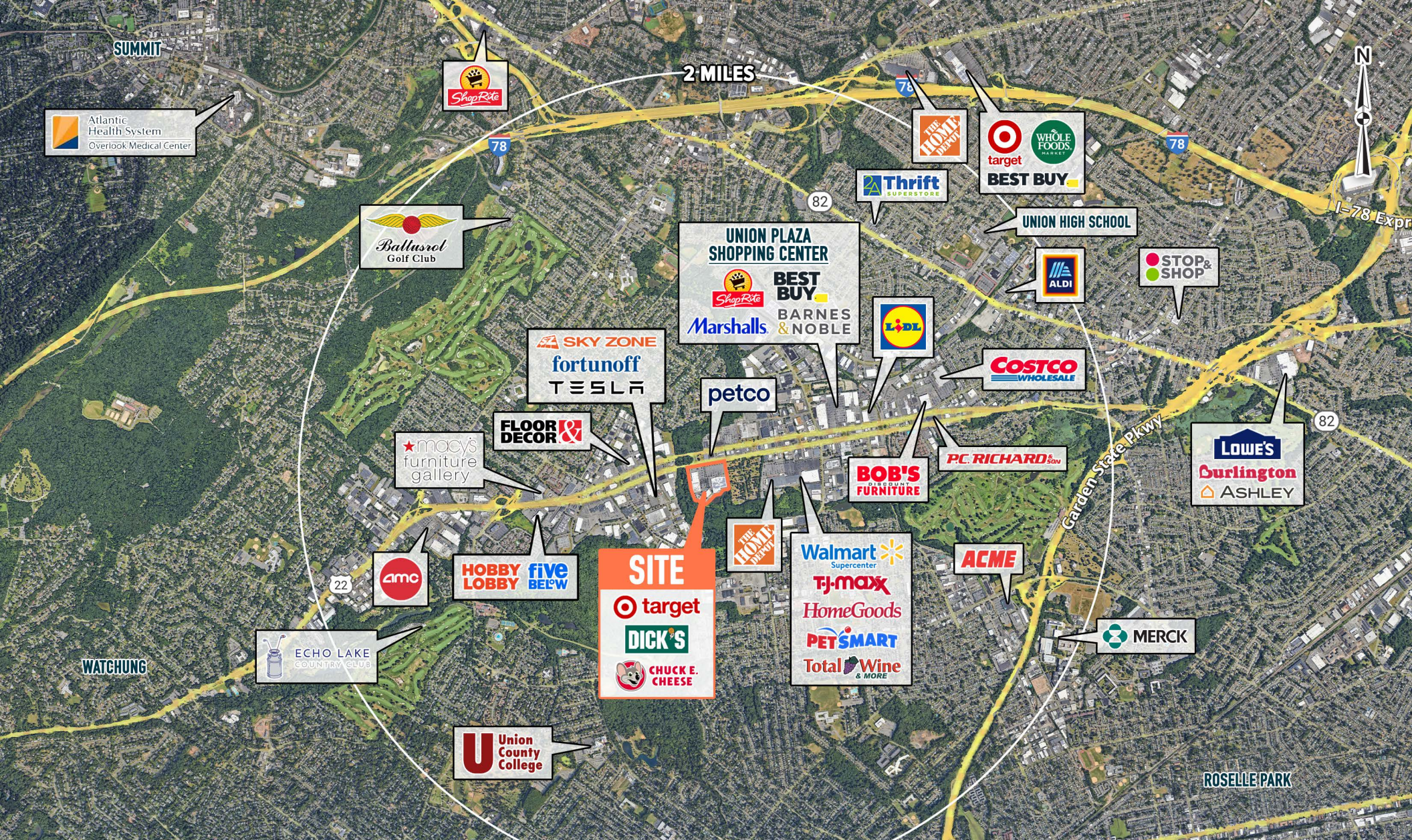
	5 Minutes	10 Minutes	15 Minutes
Total Population	17,208	186,155	578,822
Total Households	6,340	67,660	209,664
Med HH Income	\$118,895	\$95,432	\$83,267
% HH > \$100k	60%	48%	43%

The information and images contained herein are from sources deemed reliable. However, Metro Commercial Real Estate, Inc. makes no representation whatsoever as to their accuracy or authenticity. Images shown may be modified for illustrative purposes. Images may be out-of-date and not current. 12.05.24

ROUTE 22 RETAIL CENTER
UNION, NJ
 2700 US 22



MetroCommercial.com



LOCATED ON MAJOR REGIONAL RETAIL CORRIDOR ROUTE 22

The information and images contained herein are from sources deemed reliable. However, Metro Commercial Real Estate, Inc. makes no representation whatsoever as to their accuracy or authenticity. Images shown may be modified for illustrative purposes. Images may be out-of-date and not current. 12.05.24

ROUTE 22 RETAIL CENTER
UNION, NJ
 2700 US 22

EASY ACCESS ON / OFF ROUTE 22



TOP LEVEL: ±13,549 SF
BOTTOM LEVEL: ±2,814 SF
AVAILABLE

The information and images contained herein are from sources deemed reliable. However, Metro Commercial Real Estate, Inc. makes no representation whatsoever as to their accuracy or authenticity. Images shown may be modified for illustrative purposes. Images may be out-of-date and not current. 12.05.24

ROUTE 22 RETAIL CENTER
UNION, NJ
2700 US 22



MetroCommercial.com

BIG BOX NATIONAL ANCHOR TENANTS DRIVING TRAFFIC TO CENTER



1	DICK'S SPORTING GOODS	±43,576 SF
2	LEASED	±37,970 SF
3A	CHUCK E. CHEESE'S	±14,000 SF
3B	AVAILABLE	±16,707 SF
U	TARGET	±123,659 SF



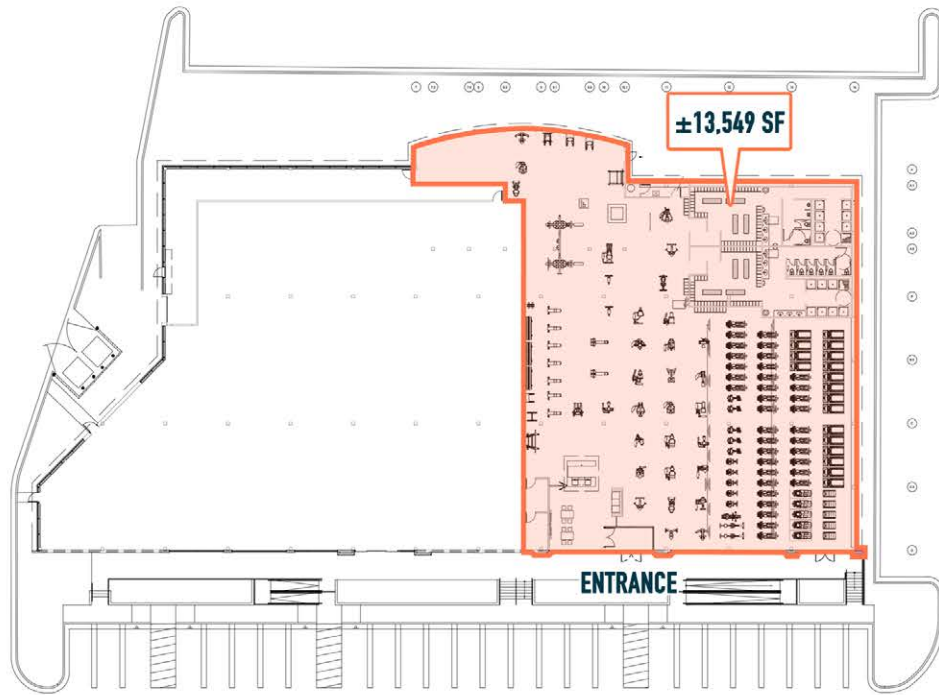
The information and images contained herein are from sources deemed reliable. However, Metro Commercial Real Estate, Inc. makes no representation whatsoever as to their accuracy or authenticity. Images shown may be modified for illustrative purposes. Images may be out-of-date and not current. 12.05.24

ROUTE 22 RETAIL CENTER
UNION, NJ
2700 US 22



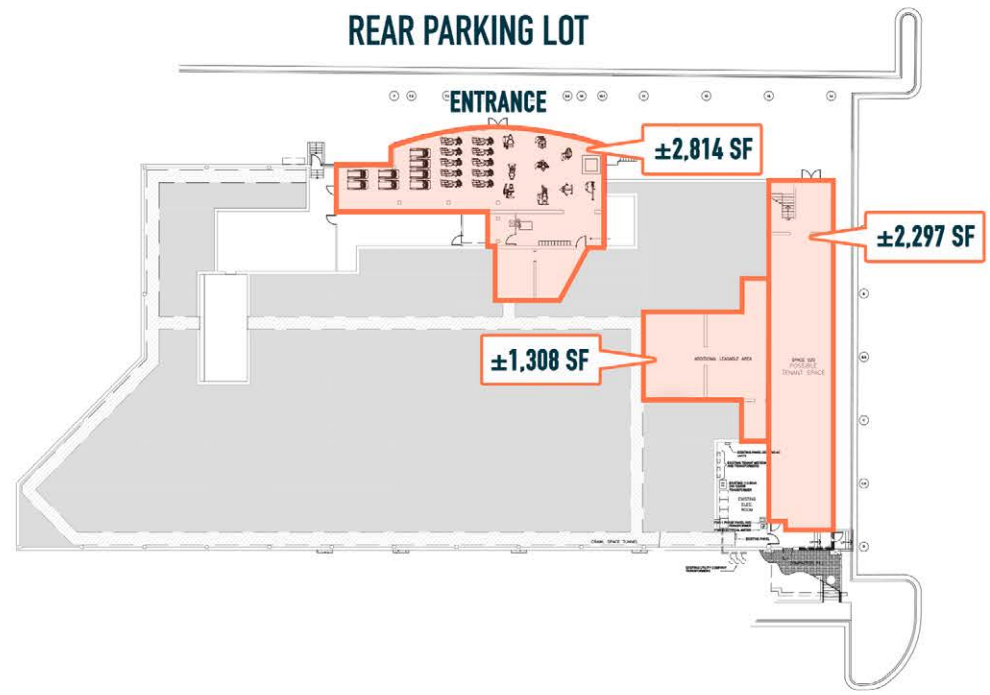
MetroCommercial.com

TOP FLOOR



FRONT PARKING LOT

BOTTOM FLOOR



REAR PARKING LOT

The information and images contained herein are from sources deemed reliable. However, Metro Commercial Real Estate, Inc. makes no representation whatsoever as to their accuracy or authenticity. Images shown may be modified for illustrative purposes. Images may be out-of-date and not current. 12.05.24

PROPERTY PHOTOS



The information and images contained herein are from sources deemed reliable. However, Metro Commercial Real Estate, Inc. makes no representation whatsoever as to their accuracy or authenticity. Images shown may be modified for illustrative purposes. Images may be out-of-date and not current. 12.05.24

ROUTE 22 RETAIL CENTER
UNION, NJ
2700 US 22



MetroCommercial.com