

CAMDEN, NJ

1426 MT. EPHRAIM AVE

±8,540 SF AVAILABLE FOR LEASE

PHILADELPHIA MSA

NEARBY



FREESTANDING BUILDING ALONG MT. EPHRAIM AVE IN CAMDEN, NJ WITH 22 EXCLUSIVE PARKING SPACES



MetroCommercial.com | PLYMOUTH MEETING, PA | MOUNT LAUREL, NJ | MIAMI, FL | PHILADELPHIA, PA

get in touch.

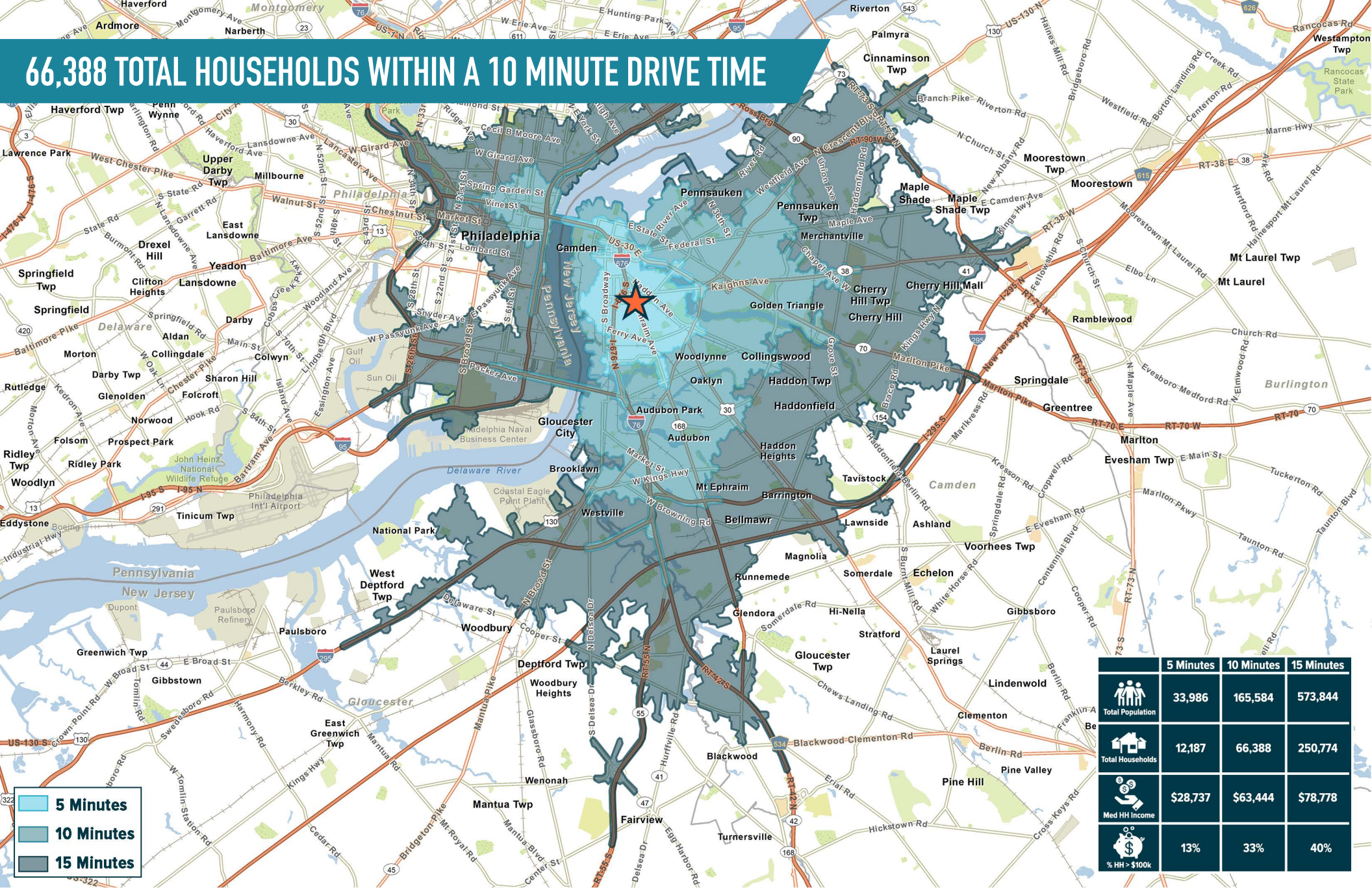
JONATHAN SPOERL

office 215.893.0300

direct 215.282.0157

jspoerl@metrocommercial.com

66,388 TOTAL HOUSEHOLDS WITHIN A 10 MINUTE DRIVE TIME



The information and images contained herein are from sources deemed reliable. However, Metro Commercial Real Estate, Inc. makes no representation whatsoever as to their accuracy or authenticity. Images shown may be modified for illustrative purposes. Images may be out-of-date and not current. 09.12.24

CAMDEN, NJ
1426 MT. EPHRAIM AVE



MetroCommercial.com

LOCATED WITHIN DENSE MARKET WITH HIGH DAYTIME POPULATION



The information and images contained herein are from sources deemed reliable. However, Metro Commercial Real Estate, Inc. makes no representation whatsoever as to their accuracy or authenticity. Images shown may be modified for illustrative purposes. Images may be out-of-date and not current. 09.12.24

CAMDEN, NJ
1426 MT. EPHRAIM AVE



MetroCommercial.com

SITUATED ON THE HIGHLY TRAFFICKED CORNER OF MT. EPHRAIM AVE AND ATLANTIC AVE



ATLANTIC AVE 7,060 VPD

22
PARKING
SPACES

AVAILABLE
±8,540 SF
ON ±0.52 AC

MT. EPHRAIM AVE 11,155 VPD

LANSDOWN AVE

ROSE ST



The information and images contained herein are from sources deemed reliable. However, Metro Commercial Real Estate, Inc. makes no representation whatsoever as to their accuracy or authenticity. Images shown may be modified for illustrative purposes. Images may be out-of-date and not current. 09.12.24

CAMDEN, NJ
1426 MT. EPHRAIM AVE



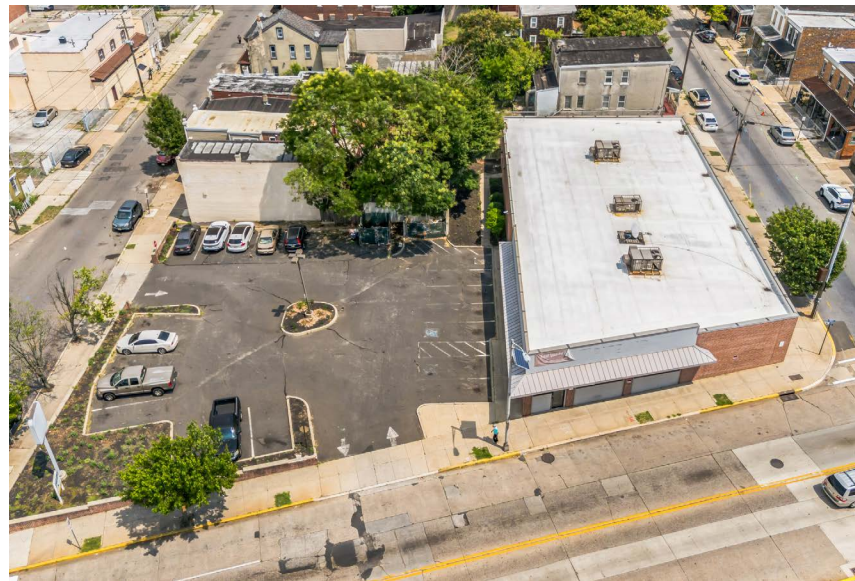
MetroCommercial.com

SITE PLAN



The information and images contained herein are from sources deemed reliable. However, Metro Commercial Real Estate, Inc. makes no representation whatsoever as to their accuracy or authenticity. Images shown may be modified for illustrative purposes. Images may be out-of-date and not current. 09.12.24

PROPERTY PHOTOS



The information and images contained herein are from sources deemed reliable. However, Metro Commercial Real Estate, Inc. makes no representation whatsoever as to their accuracy or authenticity. Images shown may be modified for illustrative purposes. Images may be out-of-date and not current. 09.12.24

CAMDEN, NJ
1426 MT. EPHRAIM AVE



MetroCommercial.com