

BRIDGETON, NJ

950 N PEARL STREET

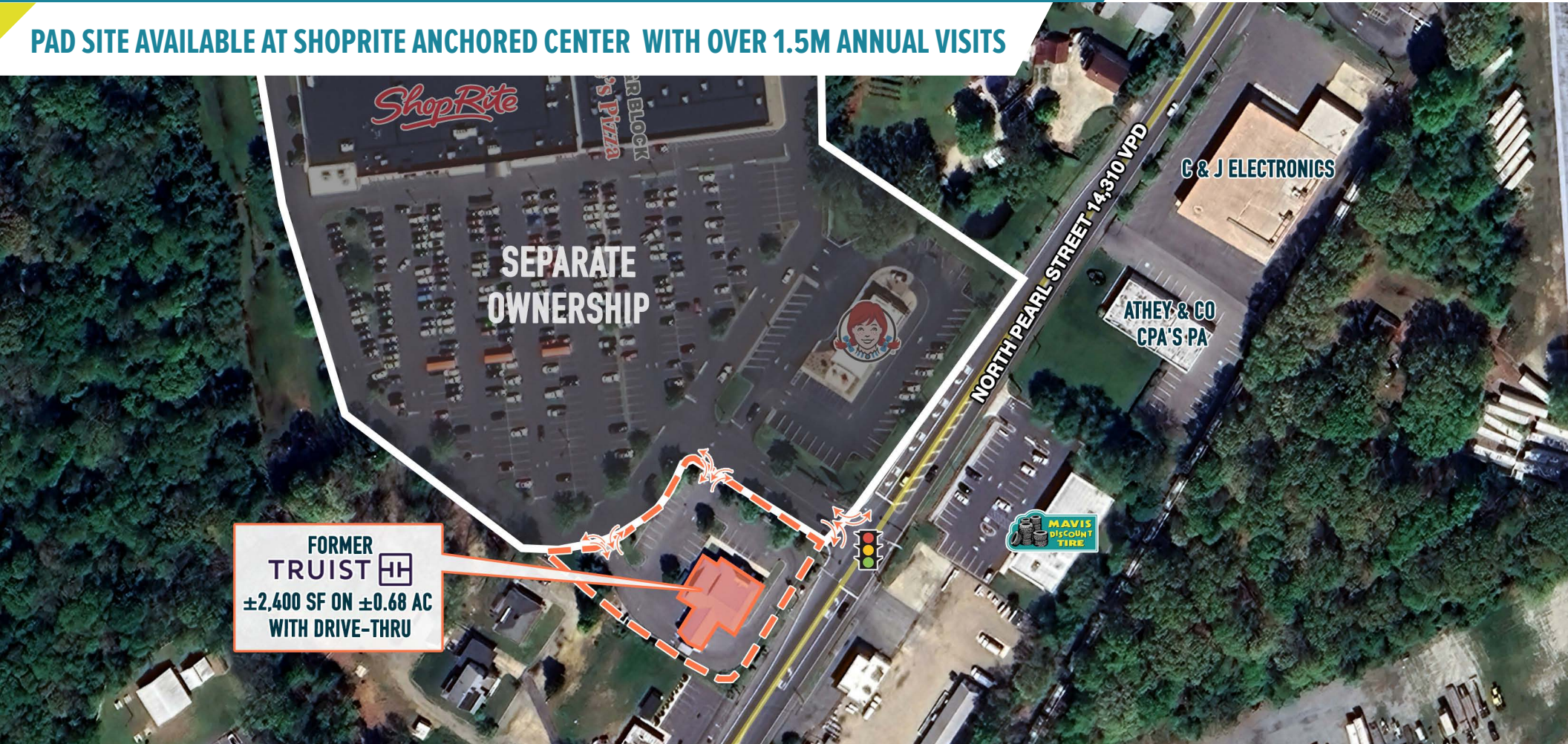
±2,400 SF ON ±0.68 ACRES FORMER BANK WITH DRIVE-THRU AVAILABLE FOR LEASE

PHILADELPHIA MSA

AREA RETAILERS



PAD SITE AVAILABLE AT SHOPRITE ANCHORED CENTER WITH OVER 1.5M ANNUAL VISITS



get in touch.

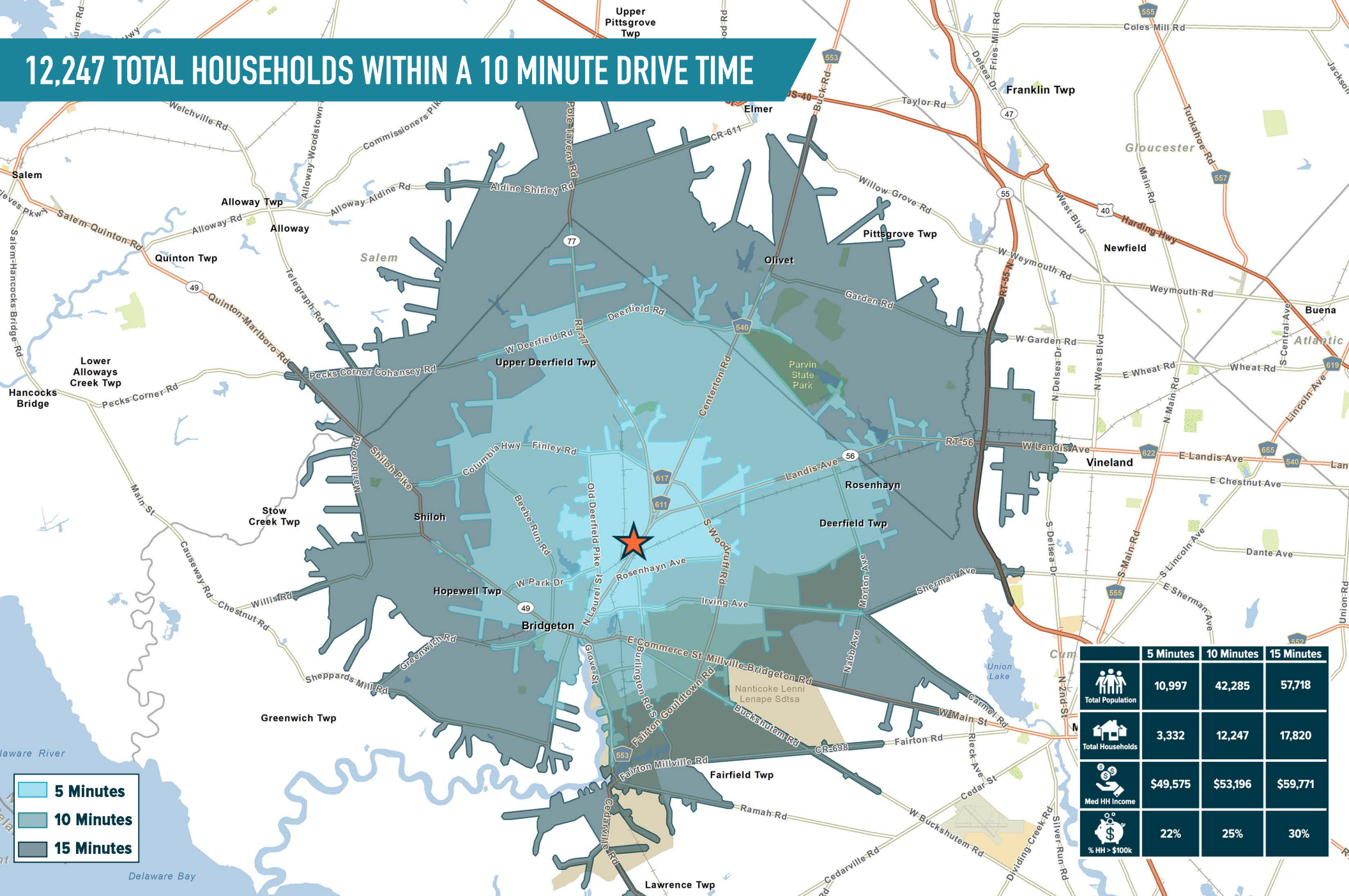
BRENDAN MULLIGAN

office 610.825.5222
direct 610.260.2688
bmulligan@metrocommercial.com

JOE DOUGHERTY

office 610.825.5222
direct 610.260.2670
jdougherty@metrocommercial.com

12,247 TOTAL HOUSEHOLDS WITHIN A 10 MINUTE DRIVE TIME



■ 5 Minutes
■ 10 Minutes
■ 15 Minutes

	5 Minutes	10 Minutes	15 Minutes
Total Population	10,997	42,285	57,718
Total Households	3,332	12,247	17,820
Med HH Income	\$49,575	\$53,196	\$59,771
% HH > \$100k	22%	25%	30%

The information and images contained herein are from sources deemed reliable. However, Metro Commercial Real Estate, Inc. makes no representation whatsoever as to their accuracy or authenticity. Images shown may be modified for illustrative purposes. Images may be out-of-date and not current. 08.26.24

PAD SITE AVAILABLE AT HIGHEST TRAFFICKED GROCERY ANCHORED CENTER IN MARKET

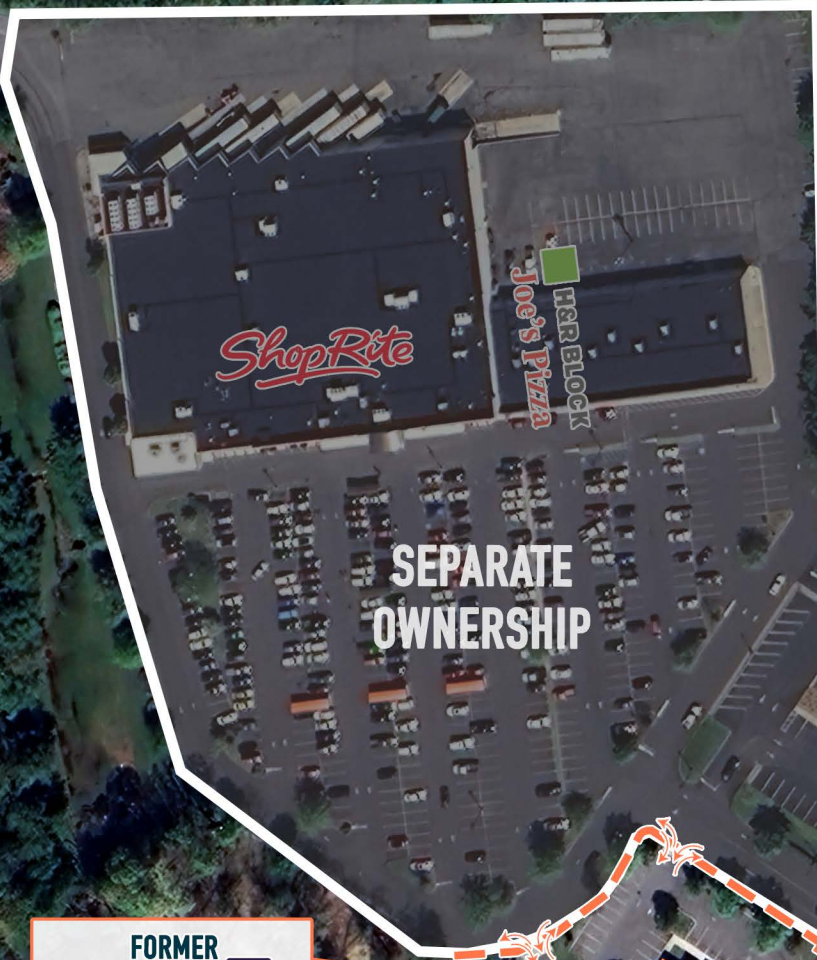


The information and images contained herein are from sources deemed reliable. However, Metro Commercial Real Estate, Inc. makes no representation whatsoever as to their accuracy or authenticity. Images shown may be modified for illustrative purposes. Images may be out-of-date and not current. 08.26.24

BRIDGETON, NJ
950 N PEARL STREET

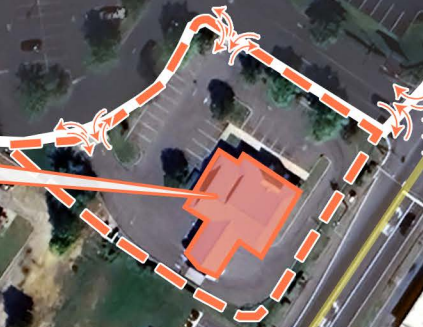


MetroCommercial.com



SEPARATE OWNERSHIP

FORMER TRUIST 
**±2,400 SF ON ±0.68 AC
WITH DRIVE-THRU**



NORTH PEARL STREET 14,310 VPD

**SPARKLE KLEEN
CAR WASH**

C & J ELECTRONICS

**ATHEY & CO
CPA'S PA**

**MAVIS
DISCOUNT
TIRES**

The information and images contained herein are from sources deemed reliable. However, Metro Commercial Real Estate, Inc. makes no representation whatsoever as to their accuracy or authenticity. Images shown may be modified for illustrative purposes. Images may be out-of-date and not current. 08.26.24

BRIDGETON, NJ
950 N PEARL STREET



MetroCommercial.com

