

BRISTOL, PA

244 RADCLIFFE STREET

±7,657 SF (2-LEVELS) ON ±0.63 AC AVAILABLE FOR SALE OR LEASE

PHILADELPHIA MSA

ADAPTIVE REUSE POTENTIAL IN THE HEART OF BRISTOL BOROUGH



MetroCommercial.com | PLYMOUTH MEETING, PA | MOUNT LAUREL, NJ | MIAMI, FL | PHILADELPHIA, PA

get in touch.

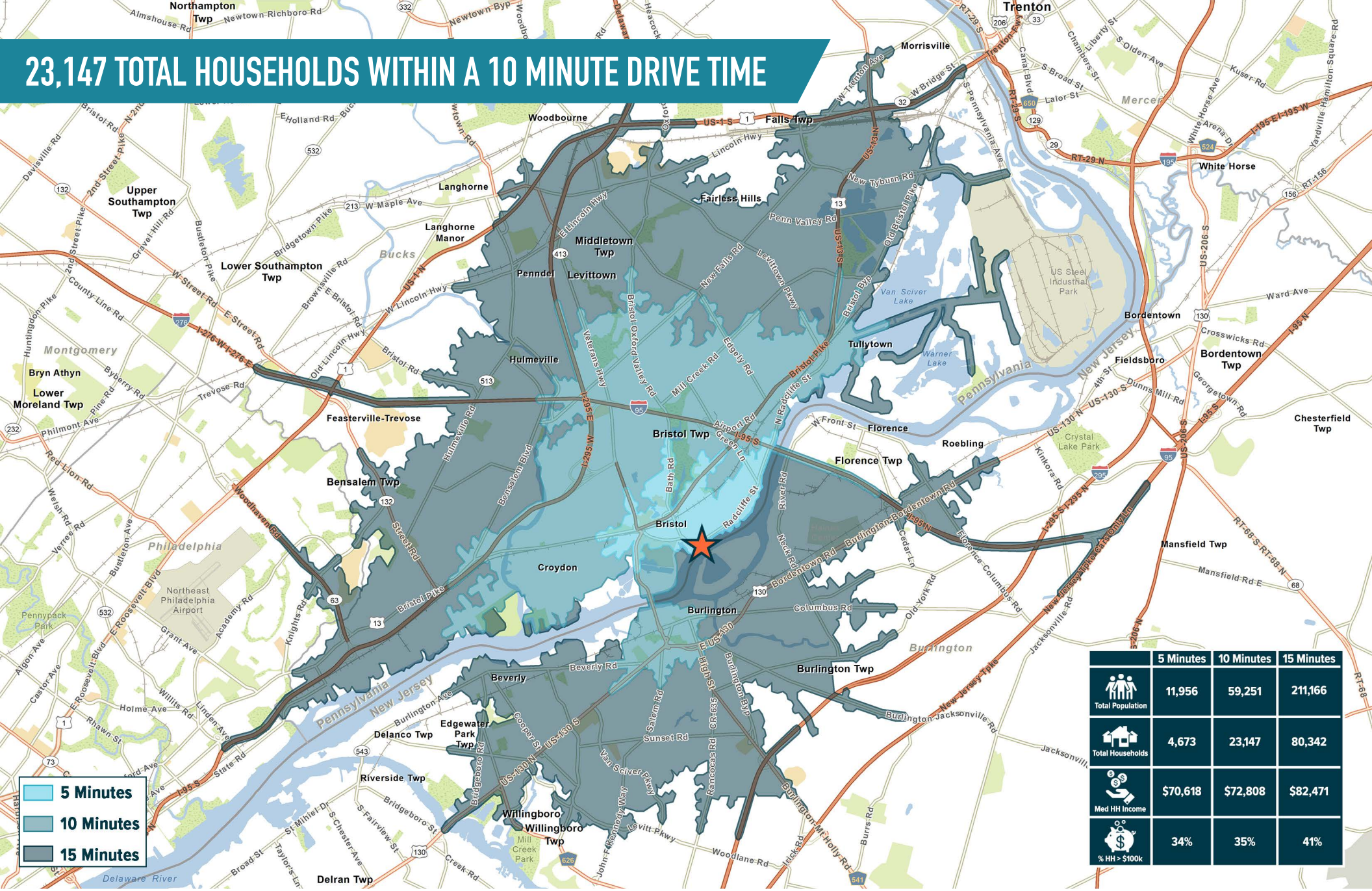
JOE DOUGHERTY

office 610.825.5222
direct 610.260.2670
jdougherty@metrocommercial.com

DAVID JUDD

office 856.866.1900
direct 856.222.3037
djudd@metrocommercial.com

23,147 TOTAL HOUSEHOLDS WITHIN A 10 MINUTE DRIVE TIME



■ 5 Minutes
■ 10 Minutes
■ 15 Minutes

	5 Minutes	10 Minutes	15 Minutes
Total Population	11,956	59,251	211,166
Total Households	4,673	23,147	80,342
Med HH Income	\$70,618	\$72,808	\$82,471
% HH > \$100k	34%	35%	41%

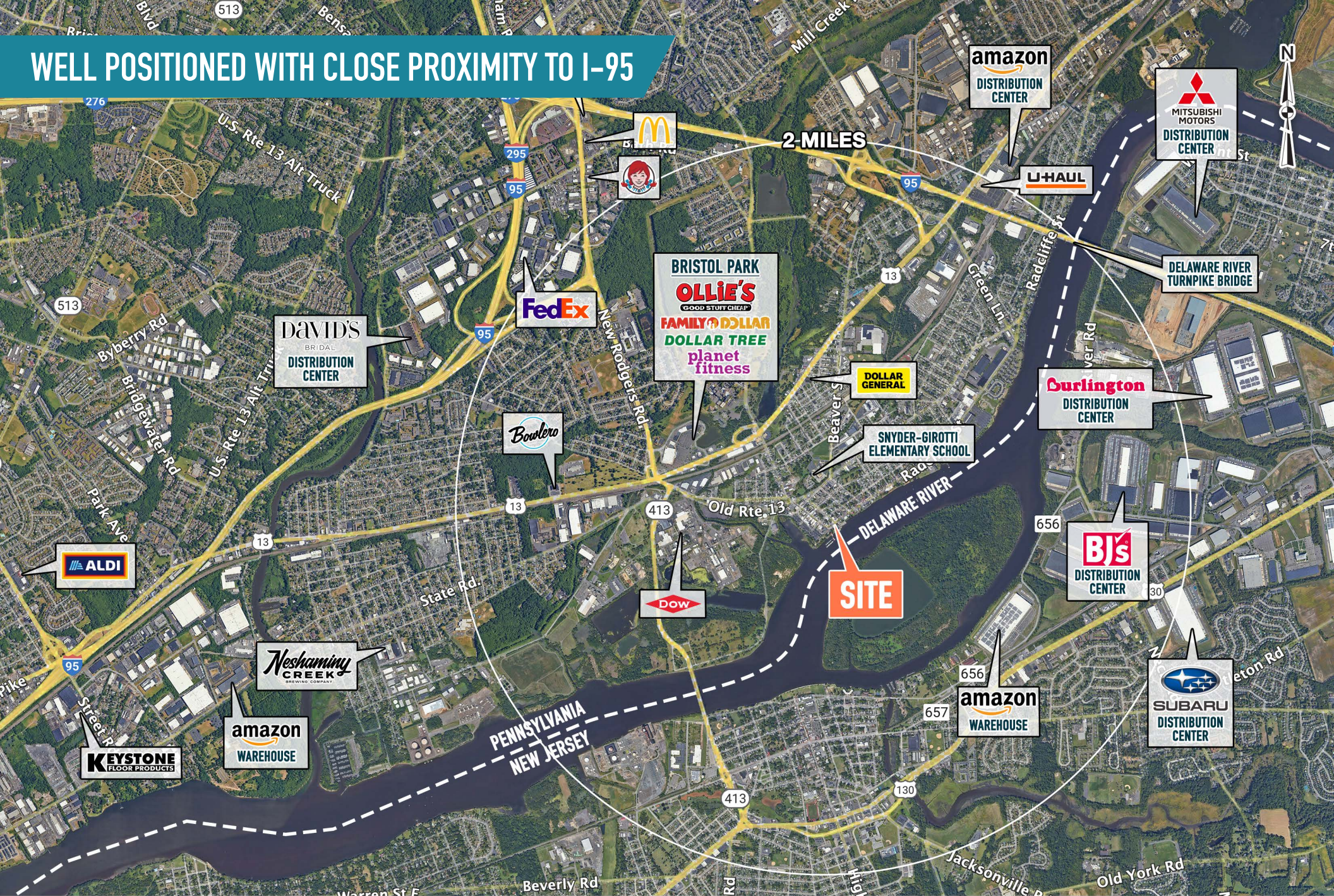
The information and images contained herein are from sources deemed reliable. However, Metro Commercial Real Estate, Inc. makes no representation whatsoever as to their accuracy or authenticity. Images shown may be modified for illustrative purposes. Images may be out-of-date and not current. 07.11.24

BRISTOL, PA
244 RADCLIFFE STREET



MetroCommercial.com

WELL POSITIONED WITH CLOSE PROXIMITY TO I-95



The information and images contained herein are from sources deemed reliable. However, Metro Commercial Real Estate, Inc. makes no representation whatsoever as to their accuracy or authenticity. Images shown may be modified for illustrative purposes. Images may be out-of-date and not current. 07.11.24

BRISTOL, PA
244 RADCLIFFE STREET



MetroCommercial.com

WATERFRONT PROPERTY WITH ADJACENT PARKING



±7,657 SF ON ±0.63 AC
2-LEVELS

COAST GUARD
LIGHT TOWER

PYLON

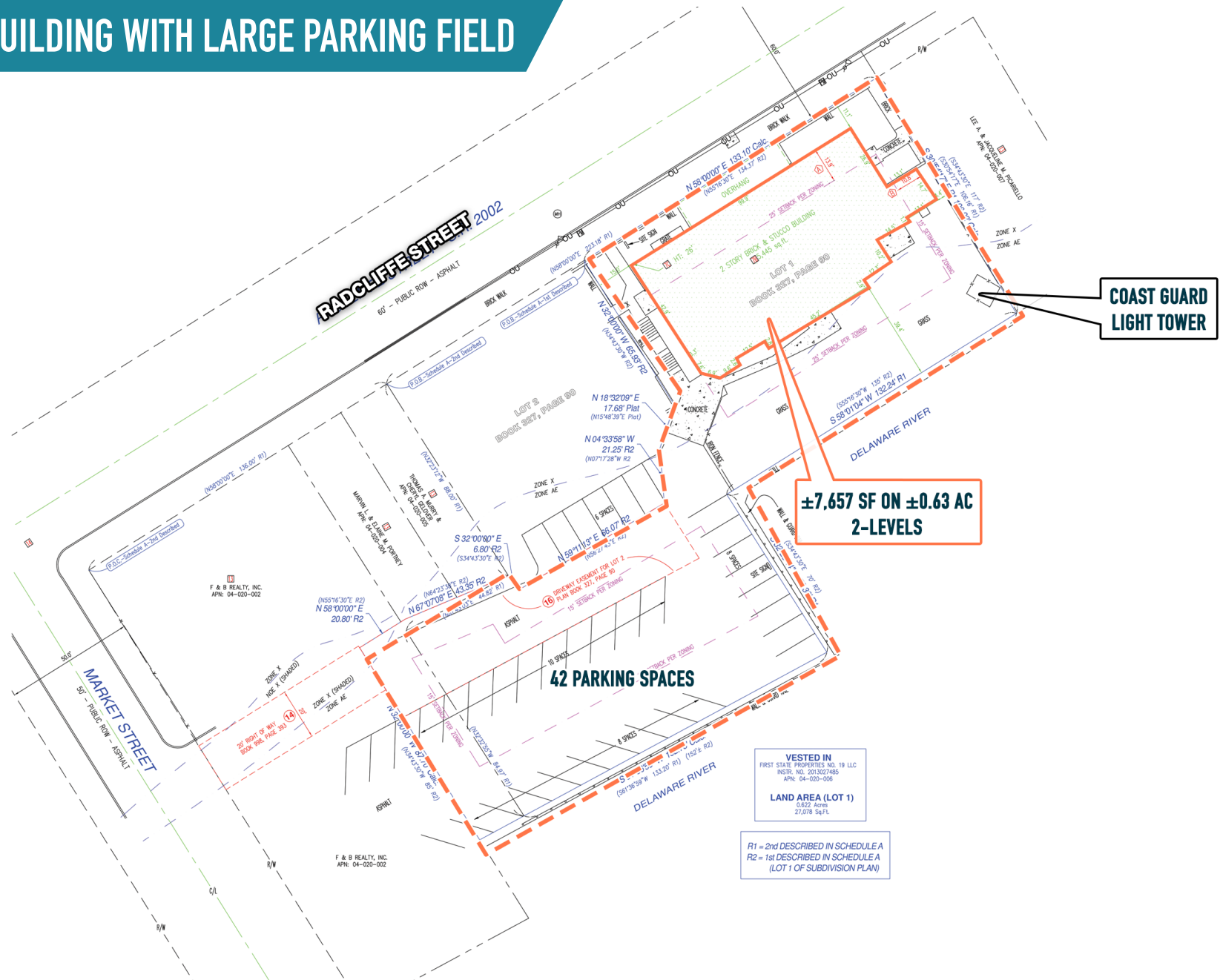
The information and images contained herein are from sources deemed reliable. However, Metro Commercial Real Estate, Inc. makes no representation whatsoever as to their accuracy or authenticity. Images shown may be modified for illustrative purposes. Images may be out-of-date and not current. 07.11.24

BRISTOL, PA
244 RADCLIFFE STREET



MetroCommercial.com

MULTI-LEVEL BUILDING WITH LARGE PARKING FIELD



The information and images contained herein are from sources deemed reliable. However, Metro Commercial Real Estate, Inc. makes no representation whatsoever as to their accuracy or authenticity. Images shown may be modified for illustrative purposes. Images may be out-of-date and not current. 07.11.24

BRISTOL, PA
244 RADCLIFFE STREET



MetroCommercial.com