

FOX RUN SHOPPING CENTER

BEAR, DE

10-412 FOX HUNT DRIVE

±1,300 - 79,000 SF & PADS AVAILABLE FOR LEASE; GLA: 246,110 SF

PHILADELPHIA MSA

JOIN

ACME



BANK OF AMERICA

MATTRESS Warehouse

±79,000 SF – APPROVED JUNIOR ANCHOR ADDITION



LEASED BY:



**METRO**<sup>®</sup>  
COMMERCIAL  
REAL ESTATE, INC.

OWNED BY:



get in touch.

**GLENN MARVIN**

office 610.825.5222  
direct 610.260.2674

gmarvin@metrocommercial.com

**ANDREW SHPIGEL**

office 215.893.0300  
direct 215.282.0153

ashpigel@metrocommercial.com



UNIVERSITY OF DELAWARE  
±23,613 STUDENTS

CENTER POINT PLAZA I  
THE HOME DEPOT

CENTER POINTE PLAZA II  
TJ-MAXX  
PET SMART

CHRISTIANA MALL  
OWNER: GGP  
macy's JC Penney  
target NORDSTROM  
CINEMARK URBAN OUTFITTERS  
BARNES & NOBLE  
Cabelas The Cheesecake Factory

COSTCO WHOLESALE  
Michaels

CHRISTIANA FASHION CENTER  
The Container Store  
BEST BUY  
Marshalls  
DSW HomeGoods  
NORDSTROM rack ULTA  
Raymour & Flanigan JARED FURNITURE

CHRISTIANA TOWN CENTER  
Boscov's  
JOANN  
OLD NAVY  
urban air

Walmart

UNIVERSITY PLAZA  
ACME  
Burlington

ShopRite  
Staples

GOVERNORS SQUARE I  
ShopRite AMERICAN SIGNATURE FURNITURE

LOWE'S

EDEN SQUARE SHOPPING CENTER  
Giant Gabe's  
LA FITNESS  
DOLLAR TREE

DOLLAR GENERAL  
FOOD LION

GLENDALE PLAZA  
ASHLEY  
DOLLAR GENERAL  
The UPS Store  
Pep Boys

Walgreens

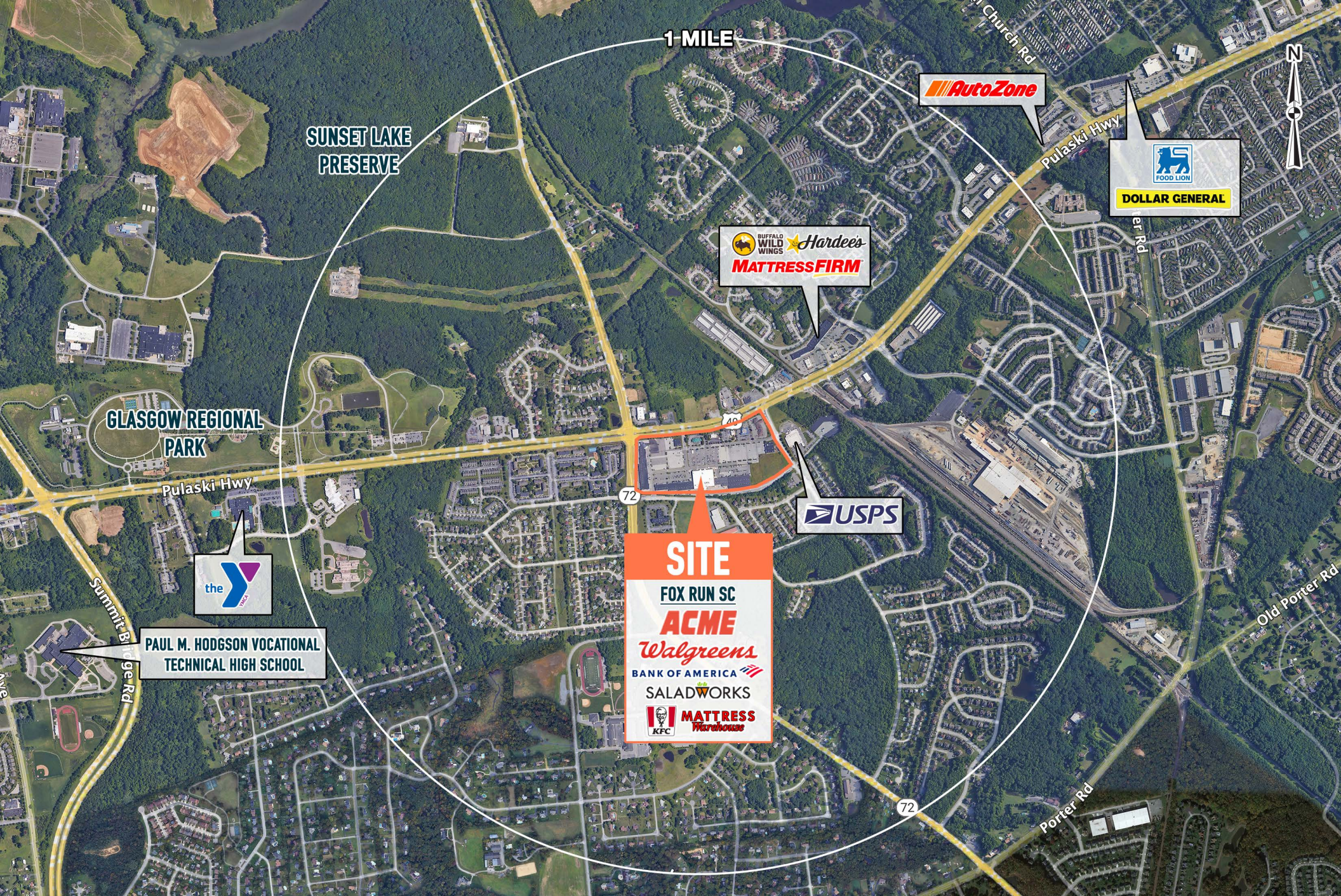
PEOPLES PLAZA  
THE HOME DEPOT REGAL  
Starbucks RITE AID  
DOLLAR TREE  
SAFeway

**SITE**  
FOX RUN SC  
ACME  
Walgreens  
BANK OF AMERICA  
SALADWORKS  
KFC MATTRESS Warehouse

3-MILES

The information and images contained herein are from sources deemed reliable. However, Metro Commercial Real Estate, Inc. makes no representation whatsoever as to their accuracy or authenticity. Images shown may be modified for illustrative purposes. Images may be out-of-date and not current. 01.14.25

FOX RUN SHOPPING CENTER  
BEAR, DE  
10-412 FOX HUNT DRIVE



1 MILE

SUNSET LAKE PRESERVE

GLASGOW REGIONAL PARK

PAUL M. HODGSON VOCATIONAL TECHNICAL HIGH SCHOOL

**SITE**  
 FOX RUN SC  
**ACME**  
*Walgreens*  
 BANK OF AMERICA  
 SALADWORKS  
 KFC **MATTRESS Warehouse**

**AutoZone**

**FOOD LION**  
**DOLLAR GENERAL**

BUFFALO WILD WINGS *Hardees*  
**MATTRESS FIRM**

**USPS**

the **Y**

FOX RUN SHOPPING CENTER  
**BEAR, DE**  
10-412 FOX HUNT DRIVE

**METRO**  
COMMERCIAL

MetroCommercial.com

The information and images contained herein are from sources deemed reliable. However, Metro Commercial Real Estate, Inc. makes no representation whatsoever as to their accuracy or authenticity. Images shown may be modified for illustrative purposes. Images may be out-of-date and not current. 01.14.25



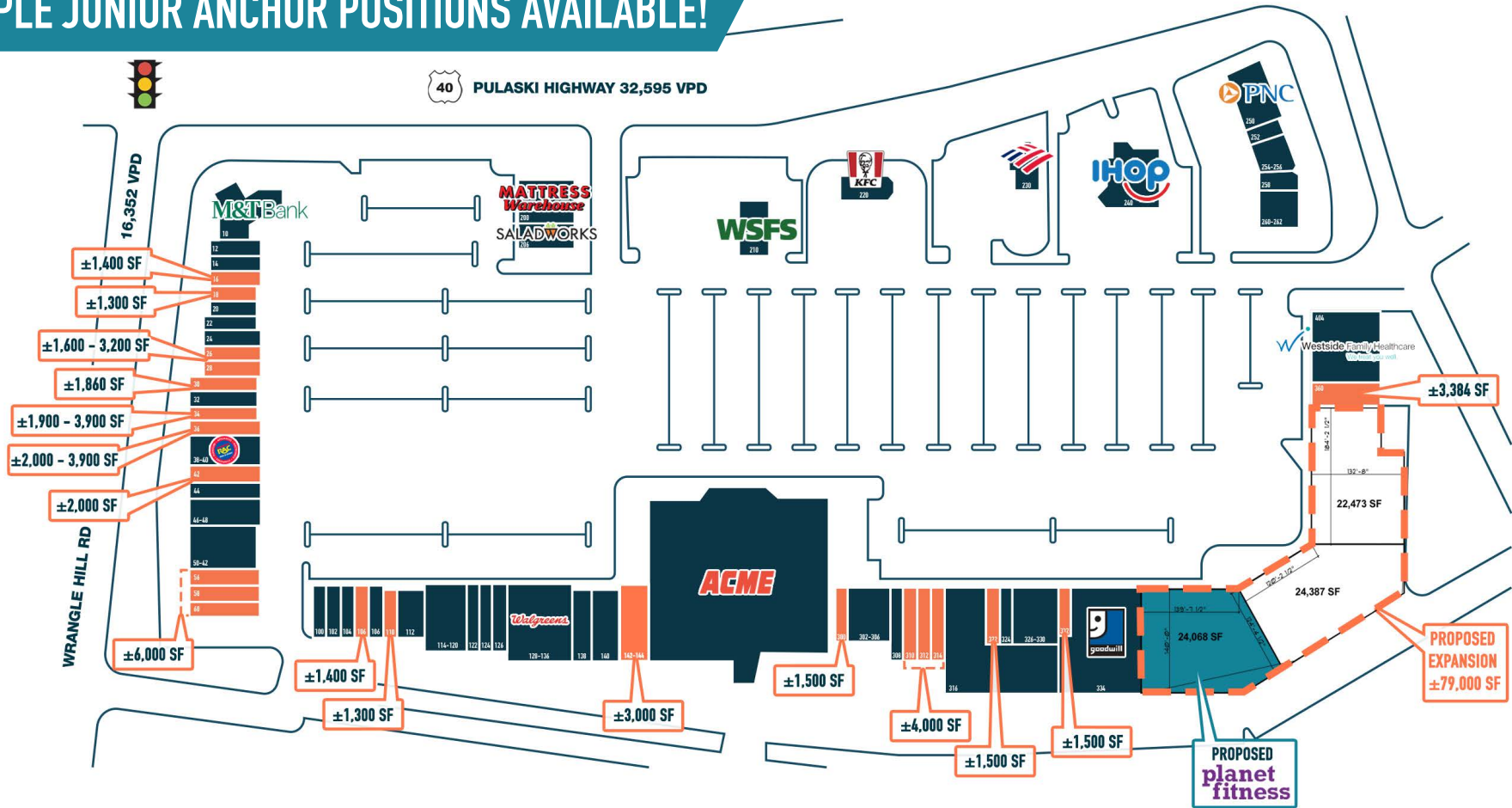
The information and images contained herein are from sources deemed reliable. However, Metro Commercial Real Estate, Inc. makes no representation whatsoever as to their accuracy or authenticity. Images shown may be modified for illustrative purposes. Images may be out-of-date and not current. 01.14.25

**FOX RUN SHOPPING CENTER**  
**BEAR, DE**  
 10-412 FOX HUNT DRIVE



MetroCommercial.com

# MULTIPLE JUNIOR ANCHOR POSITIONS AVAILABLE!



10 M&T Bank	30 Available	56 Available	114-120 Simon Eye Associates	308 Nasi Malay Thai Sushi	360 Available	254-256 NovaCare Rehabilitation
12 Chiropractor	32 Thurston's Pub	58 Available	122 Lux Spa & Nails	310 Available	404 Westside Family Healthcare	258 Apollo Walk-In Clinic
14 Miracle Ear	34 Available	60 Available	124 Riviera Pizza	312 Available	200 Mattress Warehouse	260-262 Adult Dentist
16 Available	36 Available	100 Del-One Credit Union	126 Expedia Cruises	314 Available	206 Saladworks	
18 Available	38-40 Rent-A-Center	102 Michael Gallagher Jewelers	128-136 Walgreens	316 ABC Liquor Store	210 WSFS	
20 Laundromat	42 Available	104 The Tutoring Center	138 Fresh Bagels Delight	322 Available	220 KFC	
22 Mom's Kitchen	44 Premier Martial Arts	106 Available	140 Alpha Graphics	324 Sharper Image Barber Shop	230 Bank of America	
24 One Main Financial	46-48 Orange Theory Fitness	108 Tobacco Time	142-144 Available	326-330 Concord Pet Supplies	240 IHOP	
26 Available	50-52 Just Fish	110 Available	300 Available	332 Available	250 PNC Bank	
28 Available	54 H&R Block	112 Panda Chinese Restaurant	302-306 Little Stars Dance Studio	334 Goodwill	252 Nationwide Insurance	

The information and images contained herein are from sources deemed reliable. However, Metro Commercial Real Estate, Inc. makes no representation whatsoever as to their accuracy or authenticity. Images shown may be modified for illustrative purposes. Images may be out-of-date and not current. 01.14.25

**FOX RUN SHOPPING CENTER**  
**BEAR, DE**  
 10-412 FOX HUNT DRIVE



MetroCommercial.com

# PROPERTY PHOTOS



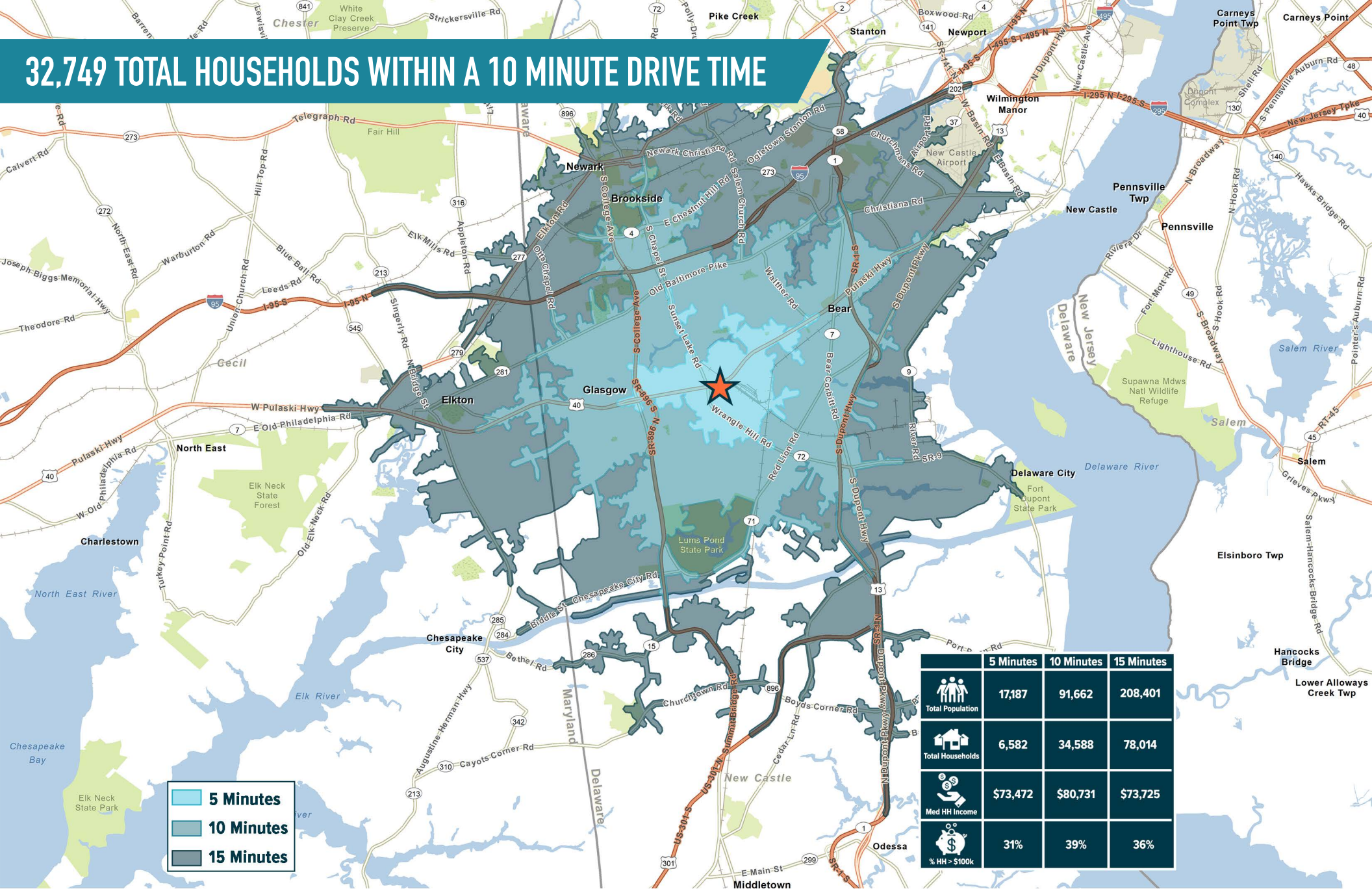
The information and images contained herein are from sources deemed reliable. However, Metro Commercial Real Estate, Inc. makes no representation whatsoever as to their accuracy or authenticity. Images shown may be modified for illustrative purposes. Images may be out-of-date and not current. 01.14.25

FOX RUN SHOPPING CENTER  
**BEAR, DE**  
10-412 FOX HUNT DRIVE



MetroCommercial.com

# 32,749 TOTAL HOUSEHOLDS WITHIN A 10 MINUTE DRIVE TIME



■ 5 Minutes  
■ 10 Minutes  
■ 15 Minutes

	5 Minutes	10 Minutes	15 Minutes
Total Population	17,187	91,662	208,401
Total Households	6,582	34,588	78,014
Med HH Income	\$73,472	\$80,731	\$73,725
% HH > \$100k	31%	39%	36%

The information and images contained herein are from sources deemed reliable. However, Metro Commercial Real Estate, Inc. makes no representation whatsoever as to their accuracy or authenticity. Images shown may be modified for illustrative purposes. Images may be out-of-date and not current. 01.14.25

**FOX RUN SHOPPING CENTER**  
**BEAR, DE**  
 10-412 FOX HUNT DRIVE



MetroCommercial.com