

6201 GERMANTOWN AVE
PHILADELPHIA, PA

±10,332 SF ON ±1.32 ACRES AVAILABLE FOR LEASE

PHILADELPHIA MSA

FORMER
 **RITE AID**

HIGHLY VISIBLE CORNER PROPERTY OF SIGNALIZED INTERSECTION



MetroCommercial.com | PLYMOUTH MEETING, PA | MOUNT LAUREL, NJ | MIAMI, FL | PHILADELPHIA, PA

get in touch.

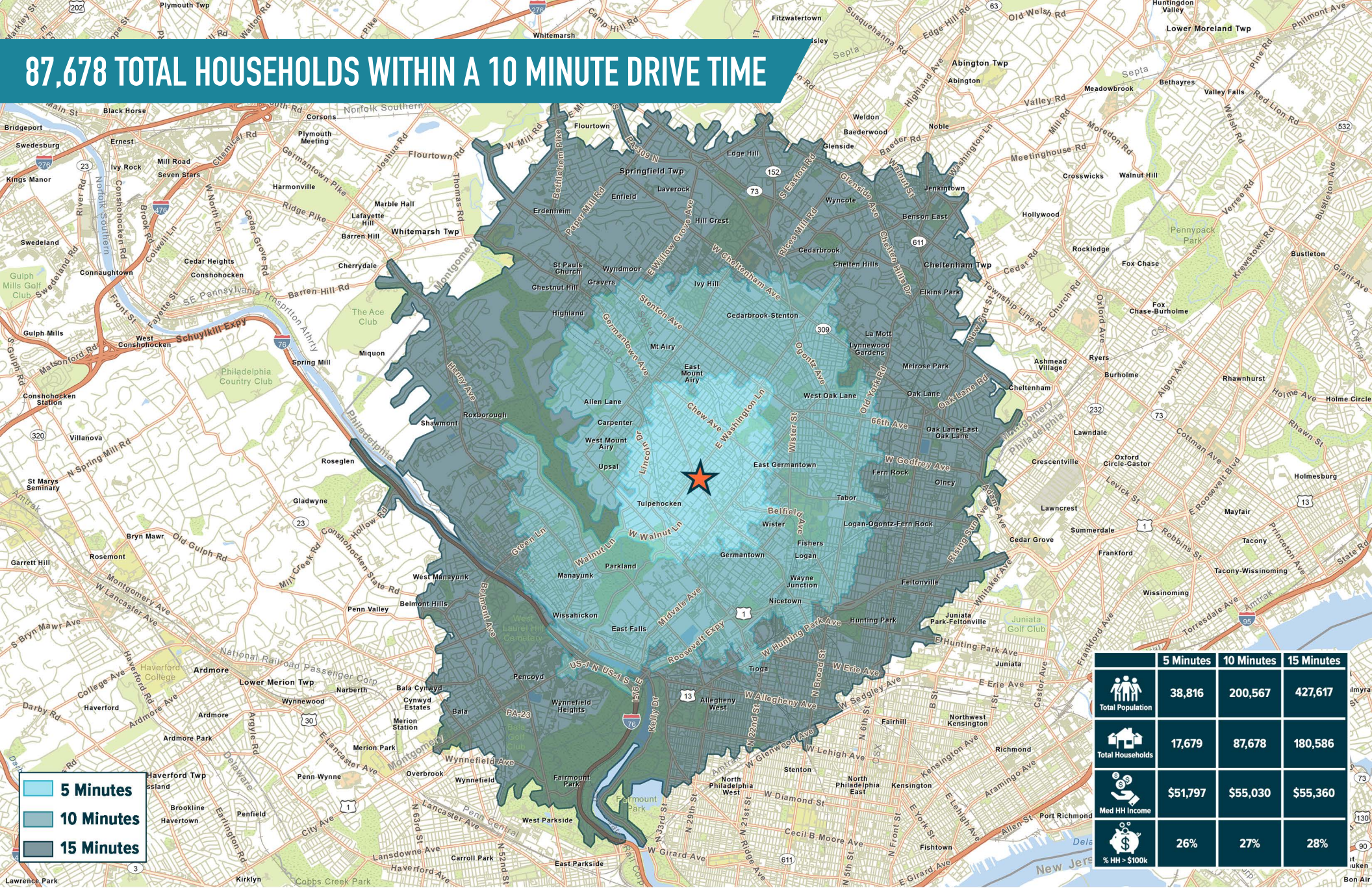
DAVID JUDD

office 856.866.1900
direct 856.222.3037
djudd@metrocommercial.com

JOE DOUGHERTY

office 610.825.5222
direct 610.260.2670
jdougherty@metrocommercial.com

87,678 TOTAL HOUSEHOLDS WITHIN A 10 MINUTE DRIVE TIME



The information and images contained herein are from sources deemed reliable. However, Metro Commercial Real Estate, Inc. makes no representation whatsoever as to their accuracy or authenticity. Images shown may be modified for illustrative purposes. Images may be out-of-date and not current. 05.17.24

6201 GERMANTOWN AVE
PHILADELPHIA, PA



MetroCommercial.com

WELL-POSITIONED ON MAJOR REGIONAL ROAD GERMANTOWN AVENUE



ANDORRA SHOPPING CENTER
ACME T.J. MAXX
KOHL'S FIVE BELOW
ESPORTA

Wawa

AutoZone

ACME

save a lot

NORTHWEST PHILADELPHIA

GROCERYOUTLET
 Bargain Market

TAGUE LUMBER

THE SHOPPES AT LASALLE
 thefreshgrocer
DUNKIN'

ALDI

target

ShopRite

SITE

THE PLAZA AT CHELTEN
save a lot
 FRESENIUS MEDICAL CARE
DOLLAR TREE
H&R BLOCK
labcorp

LASALLE UNIVERSITY
 4,000+ STUDENTS

ONE & OLNEY SHOPPING CENTER
Burlington
ShopRite
DOLLAR TREE

ACME

GERMANTOWN

GFS GERMANTOWN FRIENDS SCHOOL

Jefferson
 Philadelphia University
 Thomas Jefferson University
 EAST FALLS CAMPUS

76

MANAYUNK

611

BALA CYNWYD

EAST FALLS

2-MILES

NORTH PHILADELPHIA

611

6201 GERMANTOWN AVE
 PHILADELPHIA, PA

METRO
 COMMERCIAL

MetroCommercial.com

The information and images contained herein are from sources deemed reliable. However, Metro Commercial Real Estate, Inc. makes no representation whatsoever as to their accuracy or authenticity. Images shown may be modified for illustrative purposes. Images may be out-of-date and not current. 05.17.24

SITUATED IN DENSE EAST GERMANTOWN NEIGHBORHOOD



The information and images contained herein are from sources deemed reliable. However, Metro Commercial Real Estate, Inc. makes no representation whatsoever as to their accuracy or authenticity. Images shown may be modified for illustrative purposes. Images may be out-of-date and not current. 05.17.24

6201 GERMANTOWN AVE
PHILADELPHIA, PA



MetroCommercial.com

PROPERTY PHOTOS



The information and images contained herein are from sources deemed reliable. However, Metro Commercial Real Estate, Inc. makes no representation whatsoever as to their accuracy or authenticity. Images shown may be modified for illustrative purposes. Images may be out-of-date and not current. 05.17.24

6201 GERMANTOWN AVE
PHILADELPHIA, PA



MetroCommercial.com