

WILLINGBORO, NJ

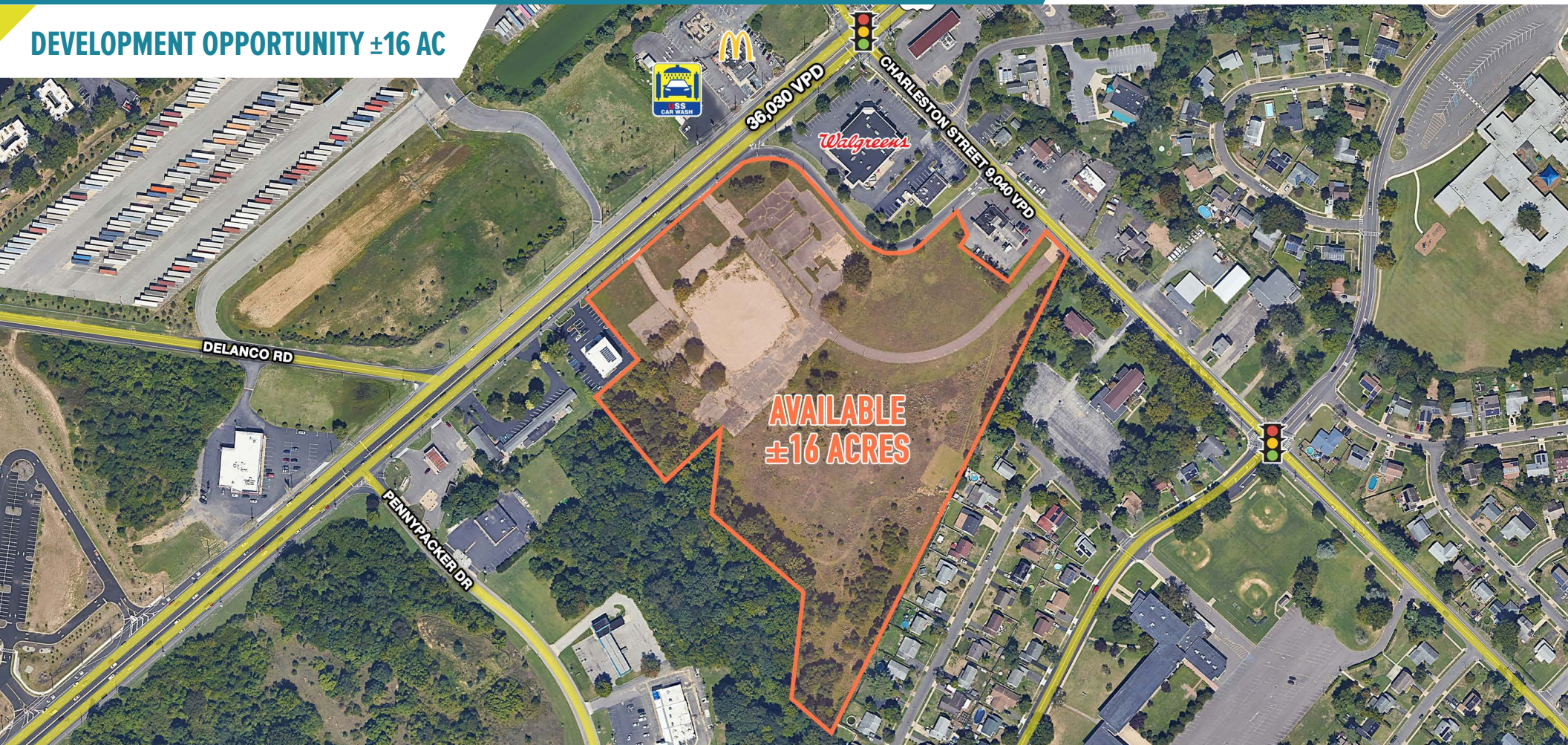
4284 US-130

±16 AC AVAILABLE FOR SALE

PHILADELPHIA MSA

FOR SALE

DEVELOPMENT OPPORTUNITY ±16 AC



MetroCommercial.com | PLYMOUTH MEETING, PA | MOUNT LAUREL, NJ | MIAMI, FL | PHILADELPHIA, PA

get in touch.

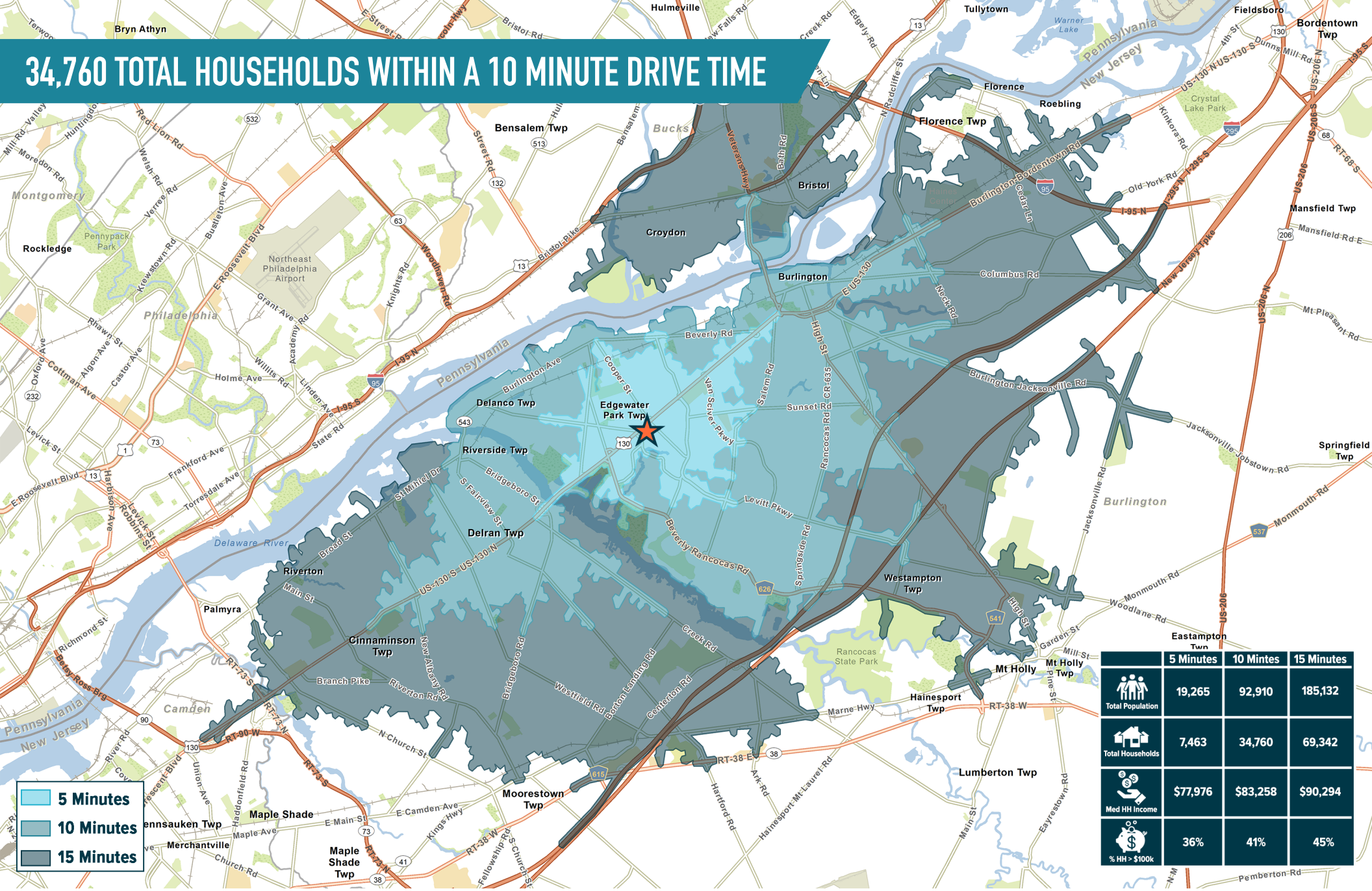
BLAINE FOREMAN

office 856.866.1900

direct 856.222.3012

bforeman@metrocommercial.com

34,760 TOTAL HOUSEHOLDS WITHIN A 10 MINUTE DRIVE TIME



■ 5 Minutes
■ 10 Minutes
■ 15 Minutes

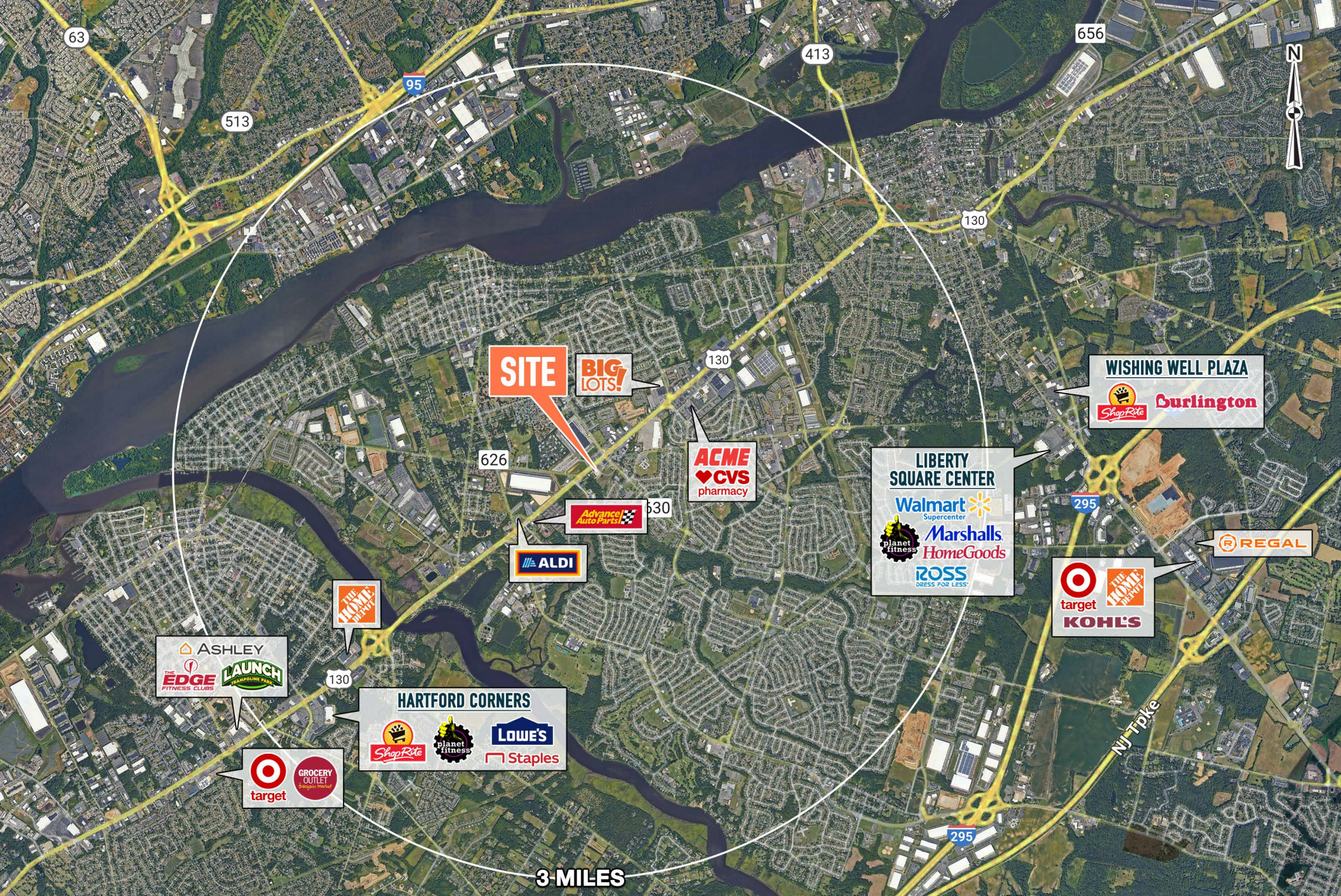
	5 Minutes	10 Minutes	15 Minutes
Total Population	19,265	92,910	185,132
Total Households	7,463	34,760	69,342
Med HH Income	\$77,976	\$83,258	\$90,294
% HH > \$100k	36%	41%	45%

The information and images contained herein are from sources deemed reliable. However, Metro Commercial Real Estate, Inc. makes no representation whatsoever as to their accuracy or authenticity. Images shown may be modified for illustrative purposes. Images may be out-of-date and not current. 04.10.24

WILLINGBORO, NJ
 4284 US-130



MetroCommercial.com



The information and images contained herein are from sources deemed reliable. However, Metro Commercial Real Estate, Inc. makes no representation whatsoever as to their accuracy or authenticity. Images shown may be modified for illustrative purposes. Images may be out-of-date and not current. 04.10.24

WILLINGBORO, NJ
4284 US-130



MetroCommercial.com



The information and images contained herein are from sources deemed reliable. However, Metro Commercial Real Estate, Inc. makes no representation whatsoever as to their accuracy or authenticity. Images shown may be modified for illustrative purposes. Images may be out-of-date and not current. 04.10.24

WILLINGBORO, NJ
4284 US-130



MetroCommercial.com