

SOMERS POINT, NJ

514 NEW RD

±7,200 SF ON ±0.55 AC AVAILABLE FOR SALE

PHILADELPHIA MSA

MULTIPLE USE POTENTIAL



MetroCommercial.com | PLYMOUTH MEETING, PA | MOUNT LAUREL, NJ | MIAMI, FL | PHILADELPHIA, PA

get in touch.

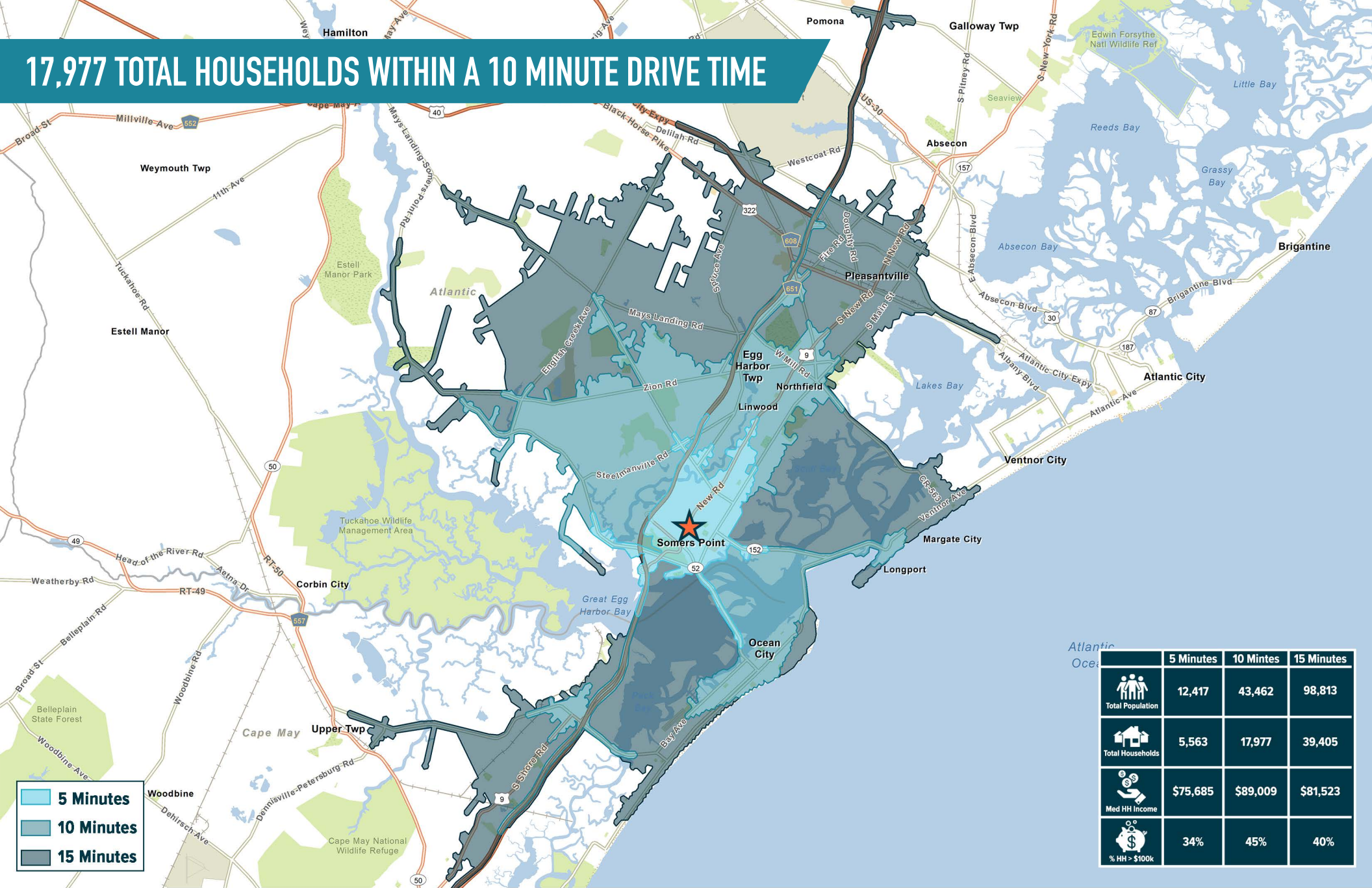
BLAINE FOREMAN

office 856.866.1900

direct 856.222.3012

bforeman@metrocommercial.com

17,977 TOTAL HOUSEHOLDS WITHIN A 10 MINUTE DRIVE TIME



	5 Minutes	10 Minutes	15 Minutes
Total Population	12,417	43,462	98,813
Total Households	5,563	17,977	39,405
Med HH Income	\$75,685	\$89,009	\$81,523
% HH > \$100k	34%	45%	40%

The information and images contained herein are from sources deemed reliable. However, Metro Commercial Real Estate, Inc. makes no representation whatsoever as to their accuracy or authenticity. Images shown may be modified for illustrative purposes. Images may be out-of-date and not current. 09.17.24

SOMERS POINT, NJ
514 NEW RD



MetroCommercial.com

ZONING: HC-1



AVAILABLE
±7,200 SF
ON ±0.55 AC

The information and images contained herein are from sources deemed reliable. However, Metro Commercial Real Estate, Inc. makes no representation whatsoever as to their accuracy or authenticity. Images shown may be modified for illustrative purposes. Images may be out-of-date and not current. 09.17.24

SOMERS POINT, NJ
514 NEW RD

PROPERTY PHOTOS



The information and images contained herein are from sources deemed reliable. However, Metro Commercial Real Estate, Inc. makes no representation whatsoever as to their accuracy or authenticity. Images shown may be modified for illustrative purposes. Images may be out-of-date and not current. 09.17.24

SOMERS POINT, NJ
514 NEW RD



MetroCommercial.com