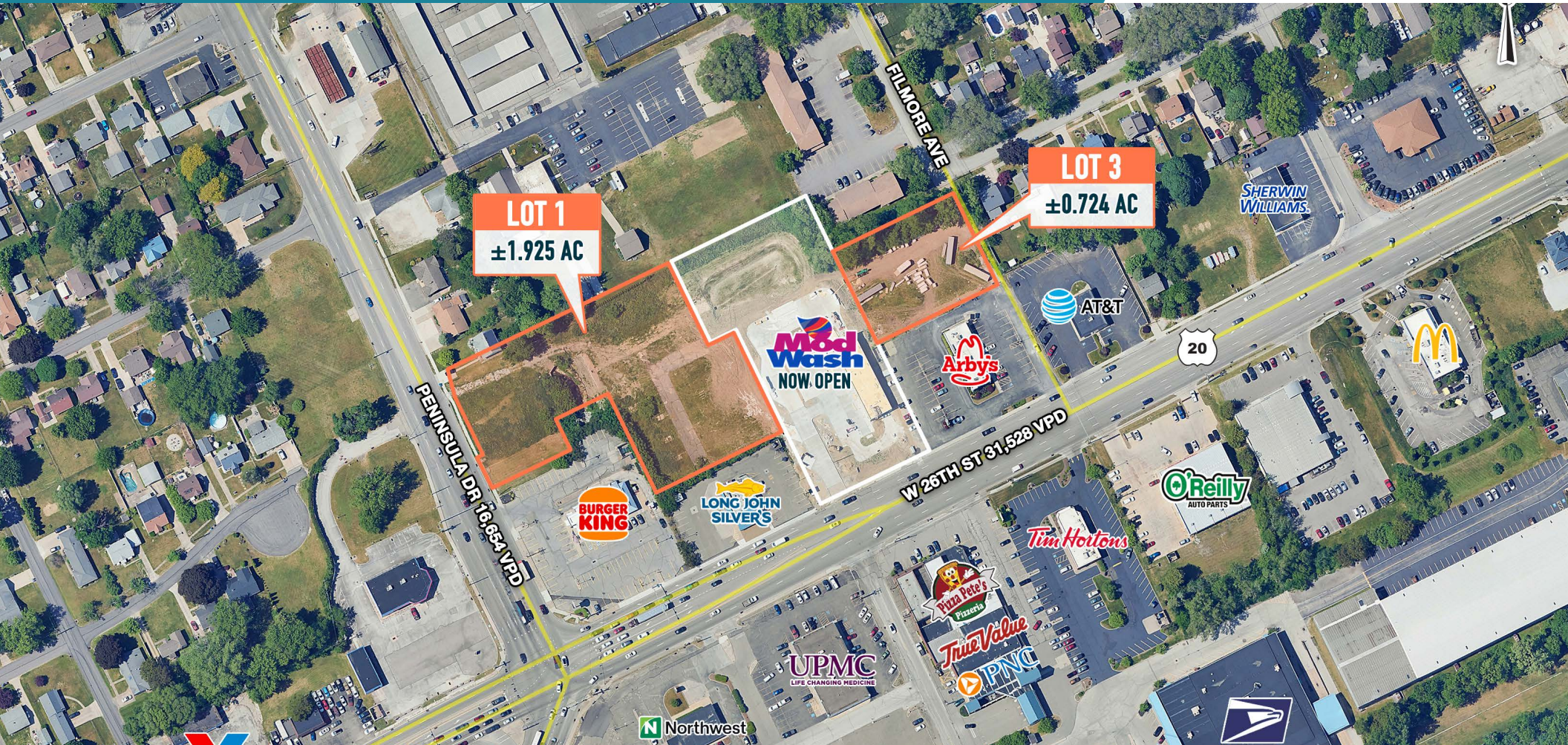


# ERIE, PA

2824 W 26TH STREET

±0.724 AC & ±1.925 AC AVAILABLE

JOIN



get in touch.



MetroCommercial.com | PLYMOUTH MEETING, PA | MOUNT LAUREL, NJ | MIAMI, FL | PHILADELPHIA, PA

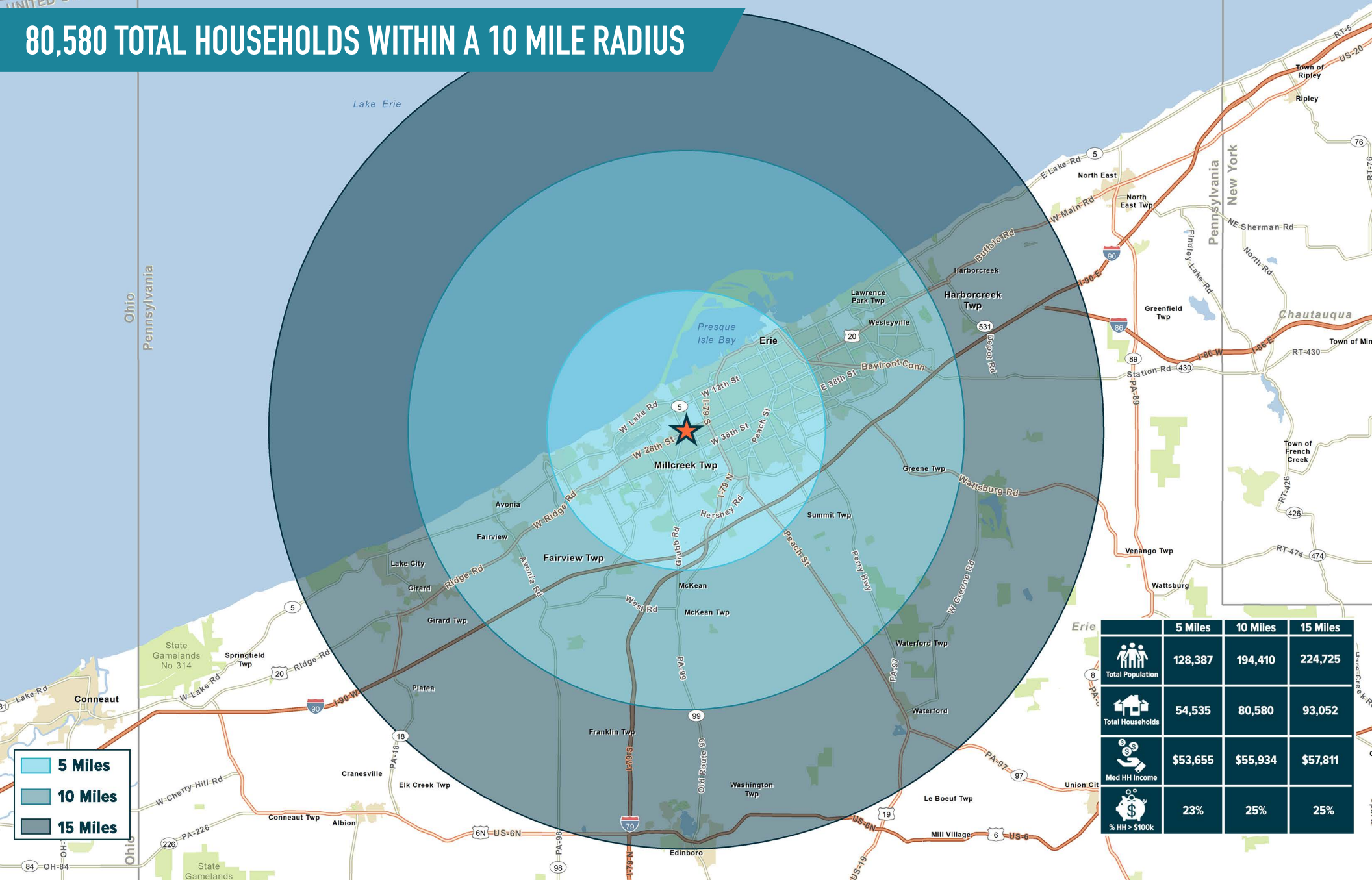
**SAMUEL THIERS**

office 610.825.5222  
direct 610.260.2665  
sthiers@metrocommercial.com

**MARK GERLACH**

office 856.866.1900  
direct 856.222.3032  
mgerlach@metrocommercial.com

# 80,580 TOTAL HOUSEHOLDS WITHIN A 10 MILE RADIUS



5 Miles  
10 Miles  
15 Miles

	5 Miles	10 Miles	15 Miles
Total Population	128,387	194,410	224,725
Total Households	54,535	80,580	93,052
Med HH Income	\$53,655	\$55,934	\$57,811
% HH > \$100k	23%	25%	25%

The information and images contained herein are from sources deemed reliable. However, Metro Commercial Real Estate, Inc. makes no representation whatsoever as to their accuracy or authenticity. Images shown may be modified for illustrative purposes. Images may be out-of-date and not current. 04.04.24



3-MILES



The information and images contained herein are from sources deemed reliable. However, Metro Commercial Real Estate, Inc. makes no representation whatsoever as to their accuracy or authenticity. Images shown may be modified for illustrative purposes. Images may be out-of-date and not current. 04.04.24

ERIE, PA  
2824 W 26TH STREET



MetroCommercial.com



The information and images contained herein are from sources deemed reliable. However, Metro Commercial Real Estate, Inc. makes no representation whatsoever as to their accuracy or authenticity. Images shown may be modified for illustrative purposes. Images may be out-of-date and not current. 04.04.24

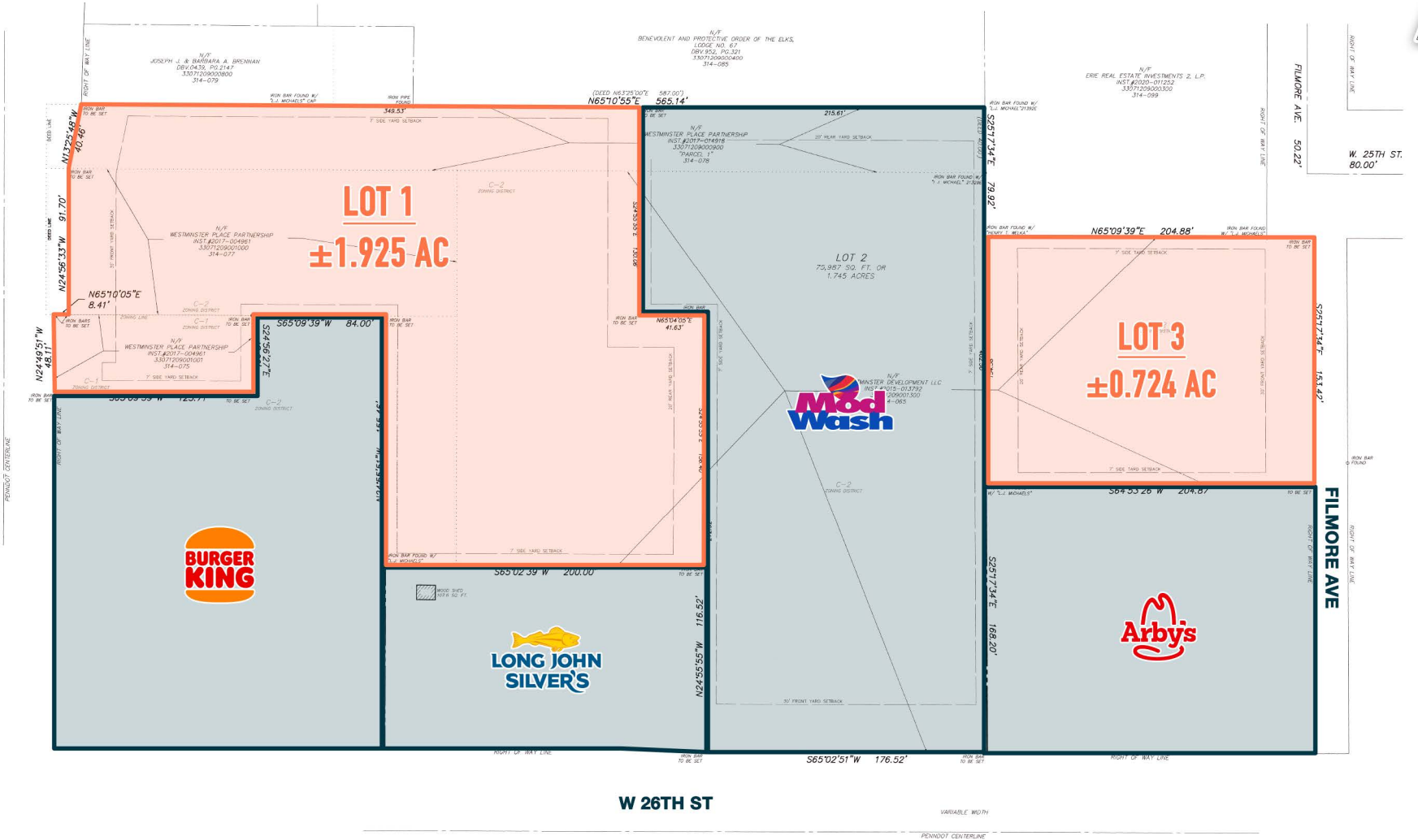
**ERIE, PA**  
2824 W 26TH STREET



MetroCommercial.com



PENINSULA DR



The information and images contained herein are from sources deemed reliable. However, Metro Commercial Real Estate, Inc. makes no representation whatsoever as to their accuracy or authenticity. Images shown may be modified for illustrative purposes. Images may be out-of-date and not current. 04.04.24

ERIE, PA  
2824 W 26TH STREET



MetroCommercial.com