

LANCASTER, PA

3000 HEMPLAND RD

±6,063 SF ON ±1.9 ACRES AVAILABLE FOR LEASE

PHILADELPHIA MSA

EXISTING RESTAURANT

Tenant is still operating; please do not disturb. Access to property by appointment only, coordinated through Metro Commercial

68 PARKING SPACES



AVAILABLE
±6,063 SF
ON ±1.9 AC

get in touch.

JOE DOUGHERTY

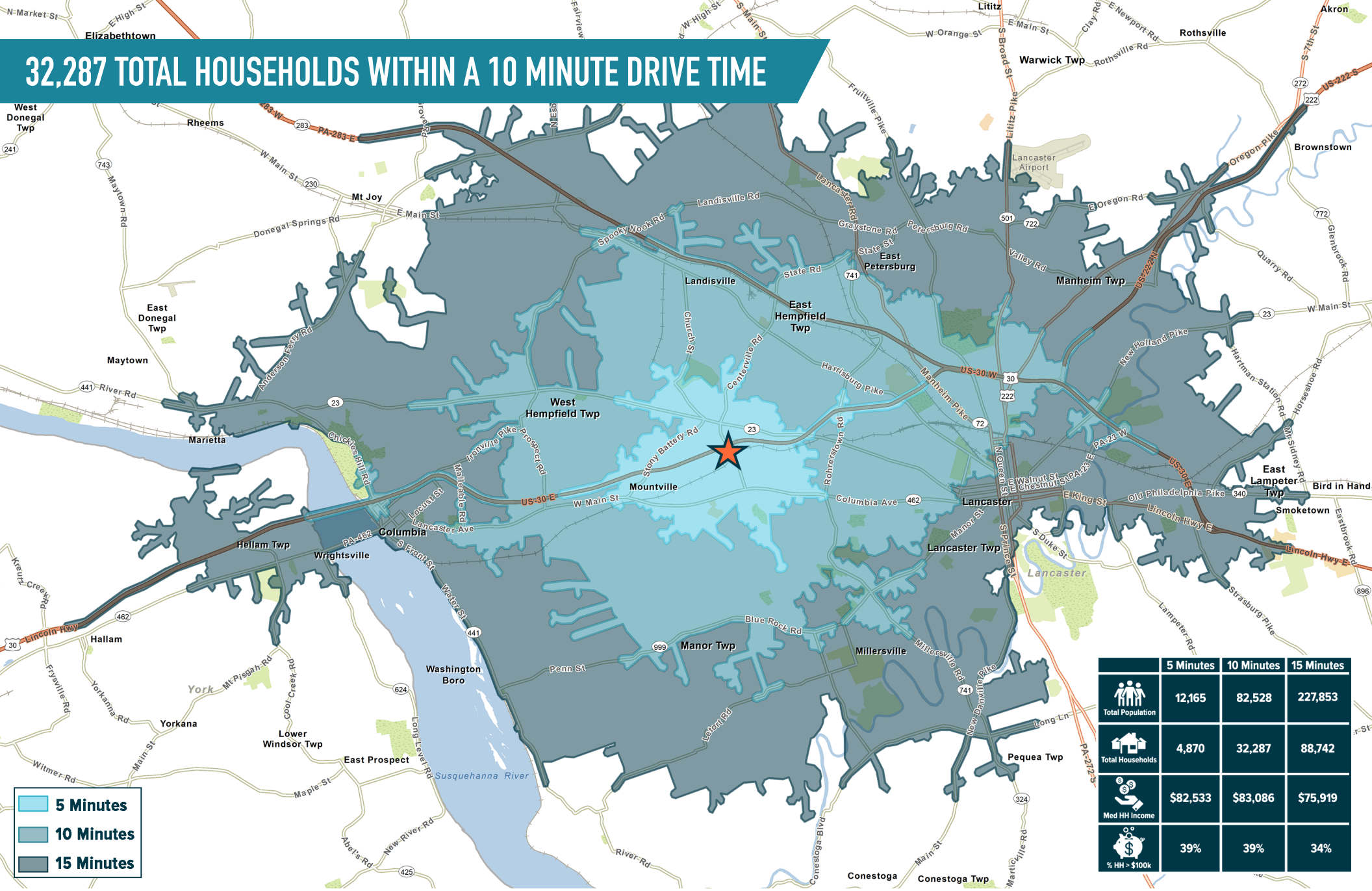
office 610.825.5222

direct 610.260.2670

jdougherty@metrocommercial.com



32,287 TOTAL HOUSEHOLDS WITHIN A 10 MINUTE DRIVE TIME

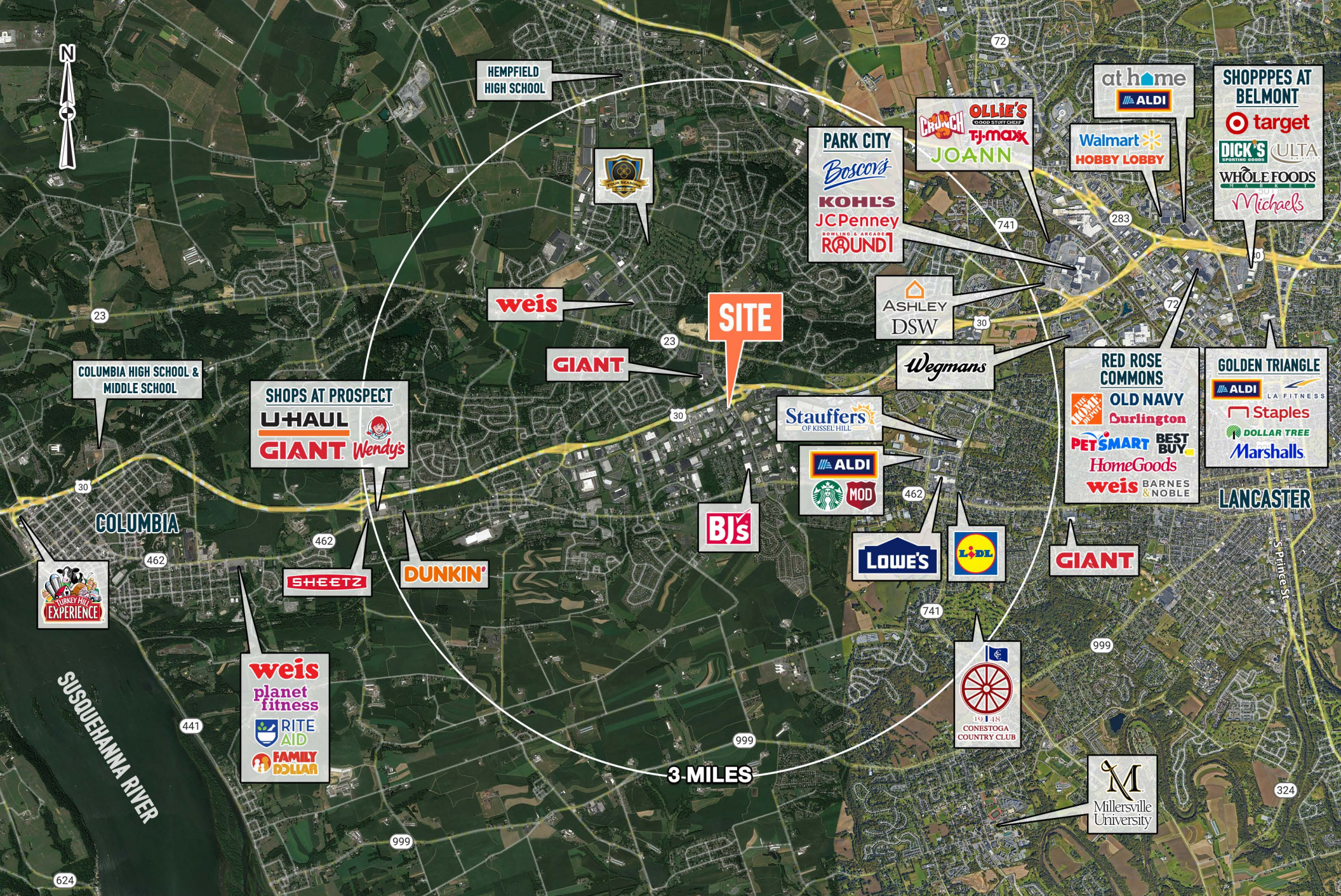


The information and images contained herein are from sources deemed reliable. However, Metro Commercial Real Estate, Inc. makes no representation whatsoever as to their accuracy or authenticity. Images shown may be modified for illustrative purposes. Images may be out-of-date and not current. 02.08.24

LANCASTER, PA
3000 HEMPLAND RD



MetroCommercial.com



The information and images contained herein are from sources deemed reliable. However, Metro Commercial Real Estate, Inc. makes no representation whatsoever as to their accuracy or authenticity. Images shown may be modified for illustrative purposes. Images may be out-of-date and not current. 02.08.24

LANCASTER, PA
3000 HEMPLAND RD



MetroCommercial.com



AVAILABLE
±6,063 SF
ON ±1.9 AC

30

60,480 VPD

CENTERVILLE RD 19,565 VPD

HEMPLAND RD

S&T Bank

GIANT GAS

Northwest

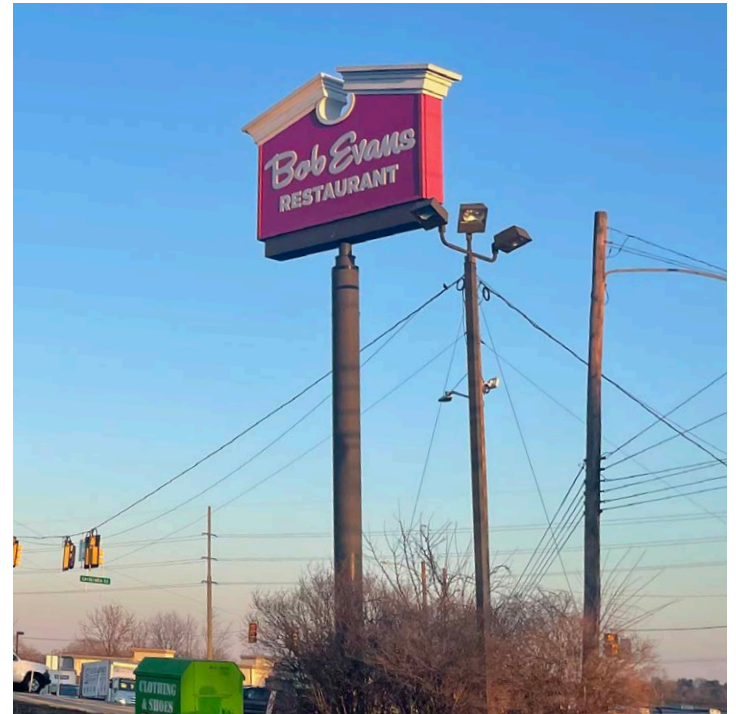
The information and images contained herein are from sources deemed reliable. However, Metro Commercial Real Estate, Inc. makes no representation whatsoever as to their accuracy or authenticity. Images shown may be modified for illustrative purposes. Images may be out-of-date and not current. 02.08.24

LANCASTER, PA
3000 HEMPLAND RD

METRO
COMMERCIAL

MetroCommercial.com

PROPERTY PHOTOS



The information and images contained herein are from sources deemed reliable. However, Metro Commercial Real Estate, Inc. makes no representation whatsoever as to their accuracy or authenticity. Images shown may be modified for illustrative purposes. Images may be out-of-date and not current. 02.08.24

LANCASTER, PA
3000 HEMPLAND RD



MetroCommercial.com