

FORMER RITE AID  
**PENN HILLS, PA**

6200 SALTSBURG ROAD

±10,908 SF ON ±1.48 AC AVAILABLE FOR LEASE

PITTSBURGH MSA

— AREA RETAILERS —

*Walgreens*

✱ Citizens

**Arby's**

**FORMER RITE AID PHARMACY IN EXCELLENT CONDITION**



MetroCommercial.com | PLYMOUTH MEETING, PA | MOUNT LAUREL, NJ | MIAMI, FL | PHILADELPHIA, PA

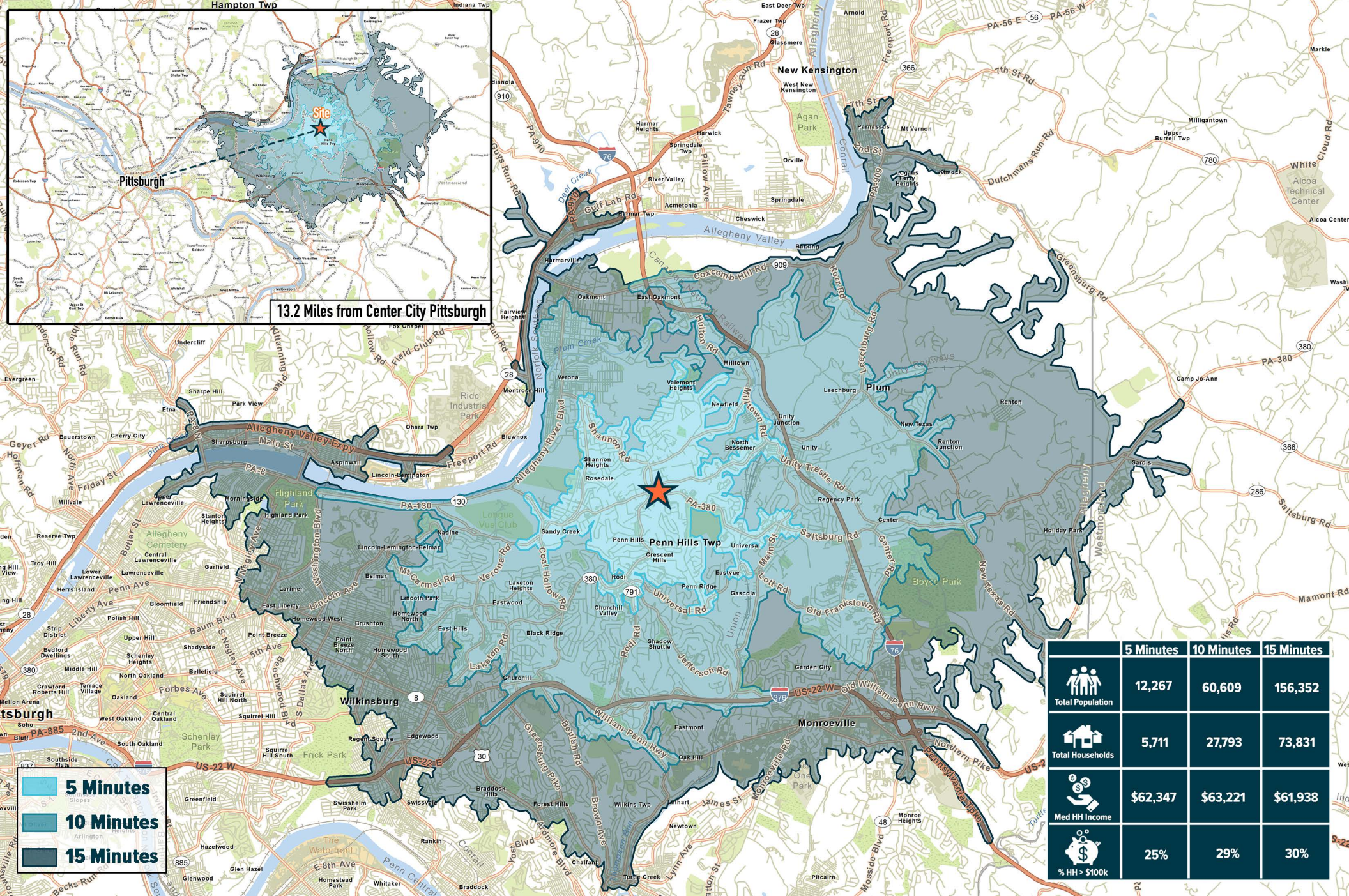
**get in touch.**

**MARK GERLACH**

office 826.866.1900

direct 856.222.3032

mgerlach@metrocommercial.com



The information and images contained herein are from sources deemed reliable. However, Metro Commercial Real Estate, Inc. makes no representation whatsoever as to their accuracy or authenticity. Images shown may be modified for illustrative purposes. Images may be out-of-date and not current. 01.09.24

FORMER RITE AID  
**PENN HILLS, PA**  
 6200 SALTSBURG ROAD



MetroCommercial.com



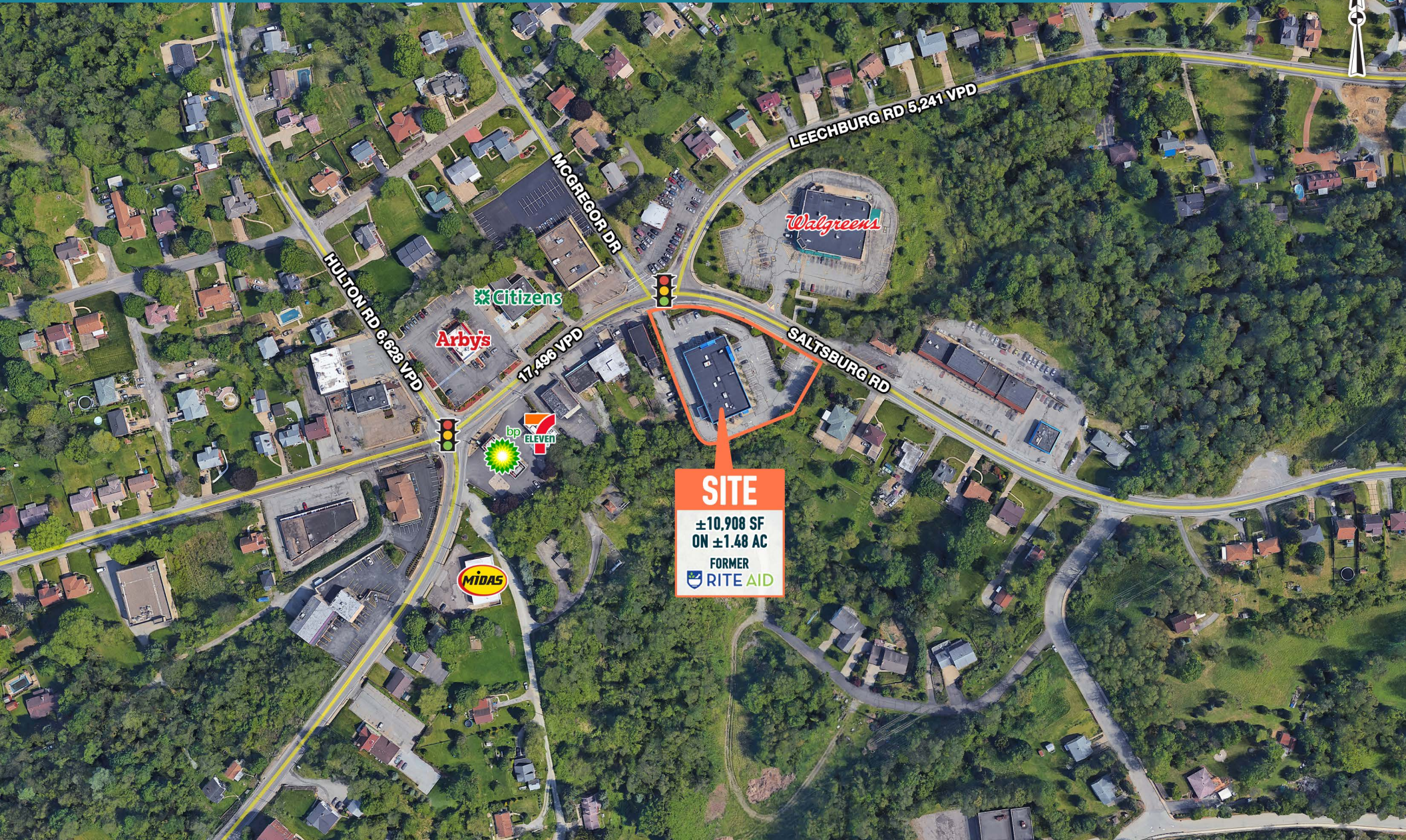
The information and images contained herein are from sources deemed reliable. However, Metro Commercial Real Estate, Inc. makes no representation whatsoever as to their accuracy or authenticity. Images shown may be modified for illustrative purposes. Images may be out-of-date and not current. 01.09.24

FORMER RITE AID  
**PENN HILLS, PA**  
 6200 SALTSBURG ROAD



MetroCommercial.com

# LOCATED AT SIGNALIZED INTERSECTION OF SALTSBURG AND LEECHBURG ROADS IN PENN HILLS



**SITE**  
±10,908 SF  
ON ±1.48 AC  
FORMER  
RITE AID

The information and images contained herein are from sources deemed reliable. However, Metro Commercial Real Estate, Inc. makes no representation whatsoever as to their accuracy or authenticity. Images shown may be modified for illustrative purposes. Images may be out-of-date and not current. 01.09.24

FORMER RITE AID  
**PENN HILLS, PA**  
6200 SALTSBURG ROAD



MetroCommercial.com

# B-2 COMMERCIAL ZONING ALLOWS FOR A WIDE VARIETY OF USES



The information and images contained herein are from sources deemed reliable. However, Metro Commercial Real Estate, Inc. makes no representation whatsoever as to their accuracy or authenticity. Images shown may be modified for illustrative purposes. Images may be out-of-date and not current. 01.09.24

FORMER RITE AID  
**PENN HILLS, PA**  
6200 SALTSBURG ROAD



MetroCommercial.com