

PHILADELPHIA, PA

338 EAST ALLEGHENY AVE

±11,045 SF FOR LEASE

PHILADELPHIA MSA

AREA RETAILERS

FAMILY DOLLAR

EARLY EDUCATION AND CHILD CARE
Brightside
ACADEMY

BURGER
KING

U-HAUL

FORMER RITE AID WITHIN DENSE PHILADELPHIA NEIGHBORHOOD



MetroCommercial.com | PLYMOUTH MEETING, PA | MOUNT LAUREL, NJ | MIAMI, FL | PHILADELPHIA, PA

get in touch.

JONATHAN SPOERL

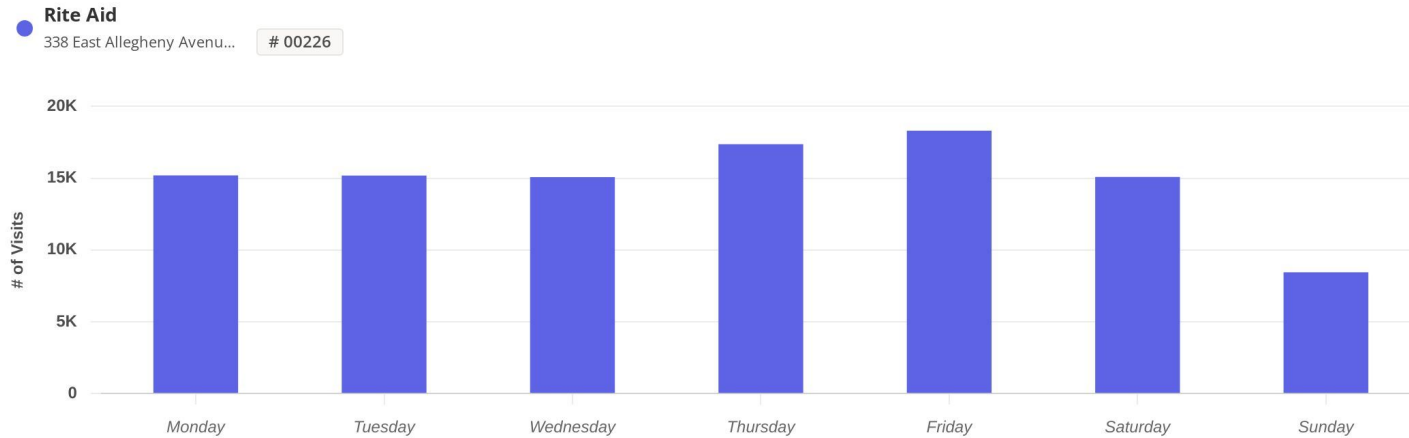
office 856.866.1900
direct 856.222.0157
jpoerl@metrocommercial.com

DAVID JUDD

office 856.866.1900
direct 856.222.3037
djudd@metrocommercial.com

PLACER.AI DATA: OCT 1, 2022 - SEP 30, 2022

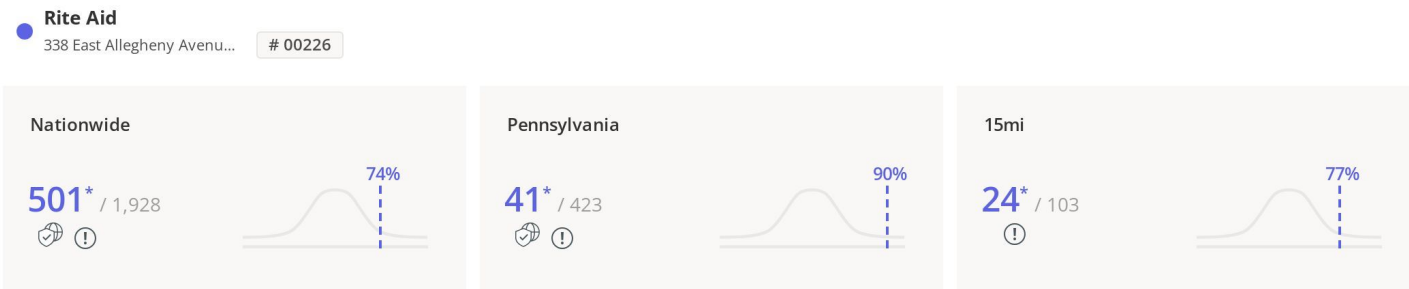
Daily Visits



Visits | Oct 1st, 2022 - Sep 30th, 2023
Data provided by Placer Labs Inc. (www.placer.ai)



Ranking Overview



Chain: Rite Aid | Visits | Oct 1st, 2022 - Sep 30th, 2023
Data provided by Placer Labs Inc. (www.placer.ai)



The information and images contained herein are from sources deemed reliable. However, Metro Commercial Real Estate, Inc. makes no representation whatsoever as to their accuracy or authenticity. Images shown may be modified for illustrative purposes. Images may be out-of-date and not current. 11.27.23

LOCATED ALONG HIGHLY TRAFFIC CORRIDOR IN BETWEEN I-95 AND ROUTE 611



The information and images contained herein are from sources deemed reliable. However, Metro Commercial Real Estate, Inc. makes no representation whatsoever as to their accuracy or authenticity. Images shown may be modified for illustrative purposes. Images may be out-of-date and not current. 11.27.23

PHILADELPHIA, PA
338 EAST ALLEGHENY AVE



MetroCommercial.com

LOCATED ON CORNER WITH FULL ACCESS ON ALLEGHENY AVE AND EXISTING PYLON



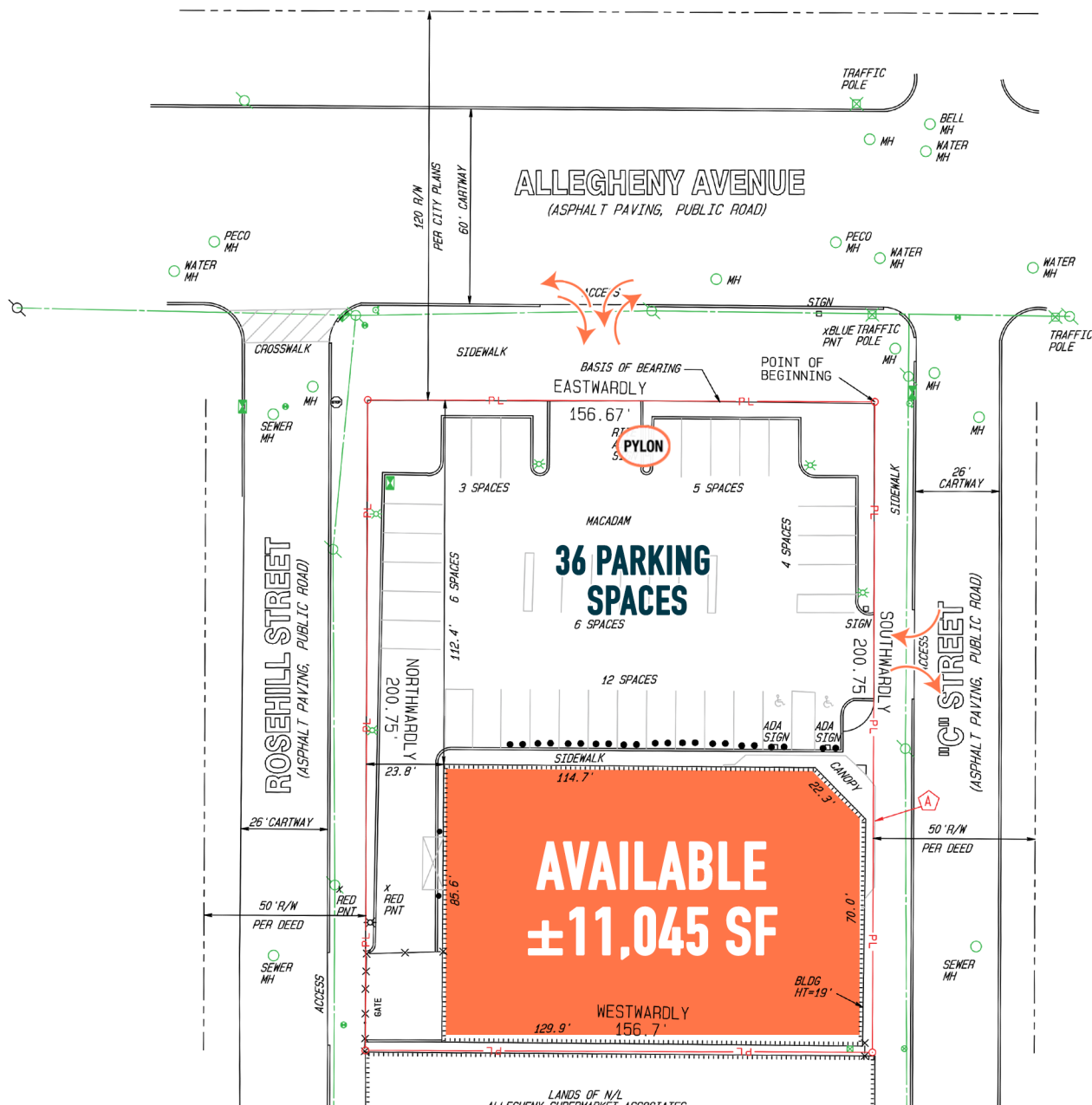
The information and images contained herein are from sources deemed reliable. However, Metro Commercial Real Estate, Inc. makes no representation whatsoever as to their accuracy or authenticity. Images shown may be modified for illustrative purposes. Images may be out-of-date and not current. 11.27.23

PHILADELPHIA, PA
338 EAST ALLEGHENY AVE



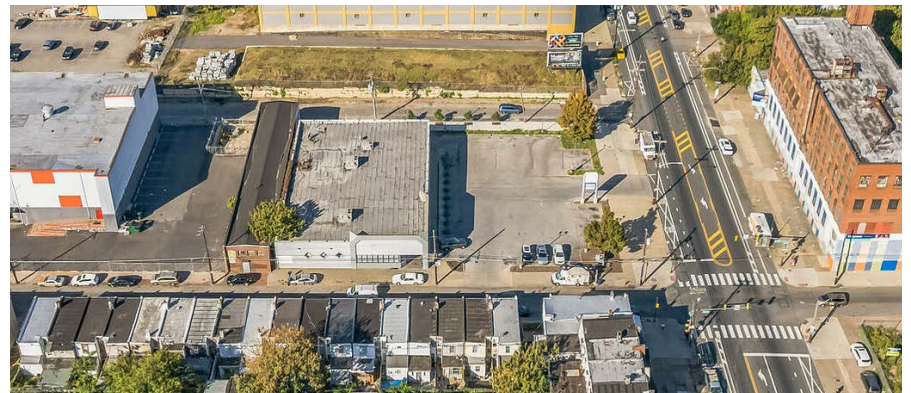
MetroCommercial.com

SITE PLAN



The information and images contained herein are from sources deemed reliable. However, Metro Commercial Real Estate, Inc. makes no representation whatsoever as to their accuracy or authenticity. Images shown may be modified for illustrative purposes. Images may be out-of-date and not current. 11.27.23

PROPERTY PHOTOS



The information and images contained herein are from sources deemed reliable. However, Metro Commercial Real Estate, Inc. makes no representation whatsoever as to their accuracy or authenticity. Images shown may be modified for illustrative purposes. Images may be out-of-date and not current. 11.27.23

PHILADELPHIA, PA
338 EAST ALLEGHENY AVE



MetroCommercial.com