

DORAL CENTER  
**DORAL, FL**

DORAL BLVD & NW 87TH AVE

±2,500 SF OF POTENTIAL SPACE AVAILABLE

JOIN  
CVS pharmacy®

107,000 VEHICLES PER DAY



MetroCommercial.com | PLYMOUTH MEETING, PA | MOUNT LAUREL, NJ | MIAMI, FL | PHILADELPHIA, PA

get in touch.

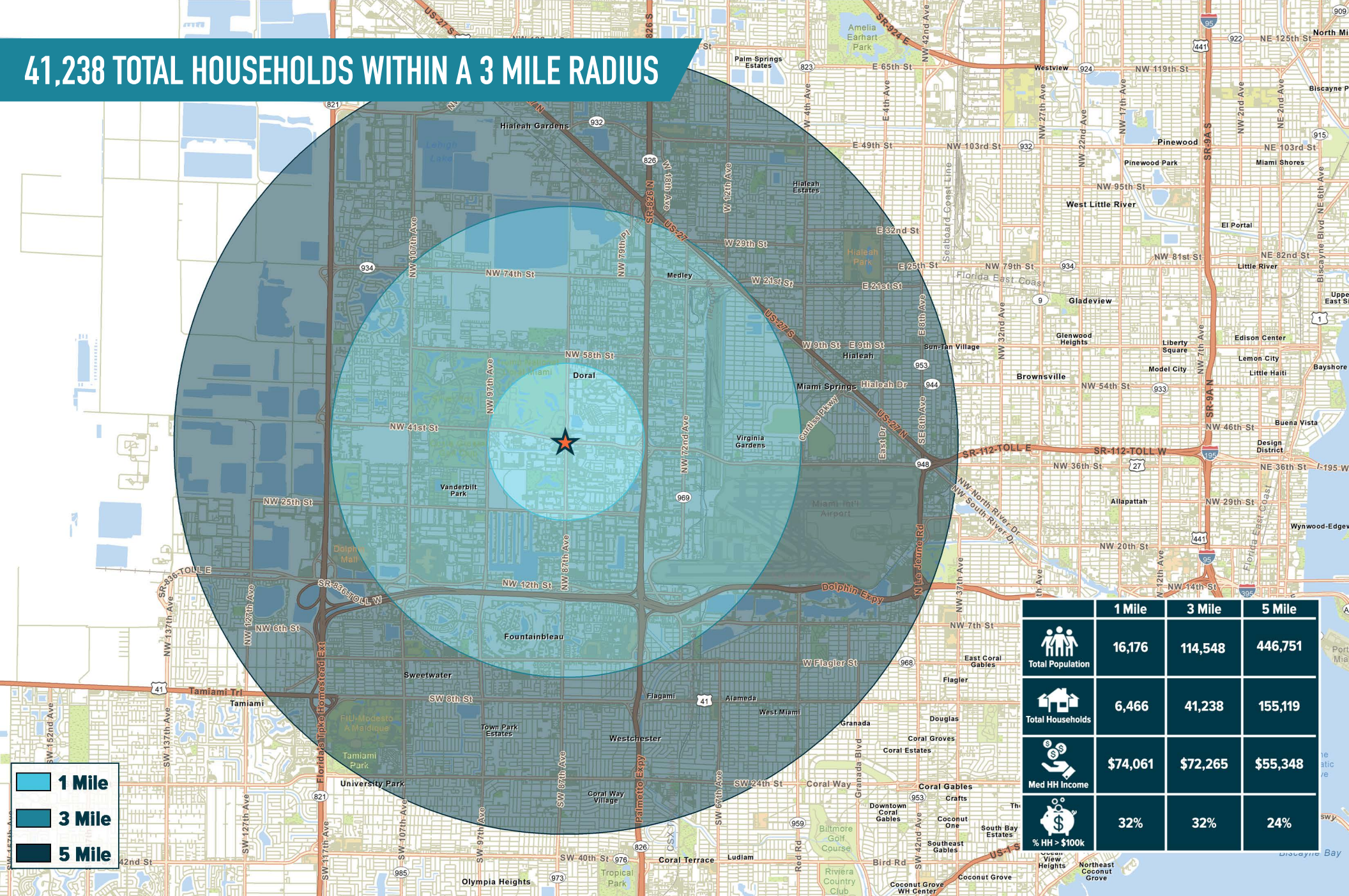
**COOPER JONES**

office 786.671.4025

direct 786.671.4025

cjones@metrocommercial.com

# 41,238 TOTAL HOUSEHOLDS WITHIN A 3 MILE RADIUS



The information and images contained herein are from sources deemed reliable. However, Metro Commercial Real Estate, Inc. makes no representation whatsoever as to their accuracy or authenticity. Images shown may be modified for illustrative purposes. Images may be out-of-date and not current. 11.13.24

**DORAL CENTER**  
**DORAL, FL**  
 DORAL BLVD & NW 87TH AVE



MetroCommercial.com

# MARKET AERIAL



The information and images contained herein are from sources deemed reliable. However, Metro Commercial Real Estate, Inc. makes no representation whatsoever as to their accuracy or authenticity. Images shown may be modified for illustrative purposes. Images may be out-of-date and not current. 11.13.24

DORAL CENTER  
DORAL, FL  
DORAL BLVD & NW 87TH AVE



MetroCommercial.com

# ZOOM AERIAL



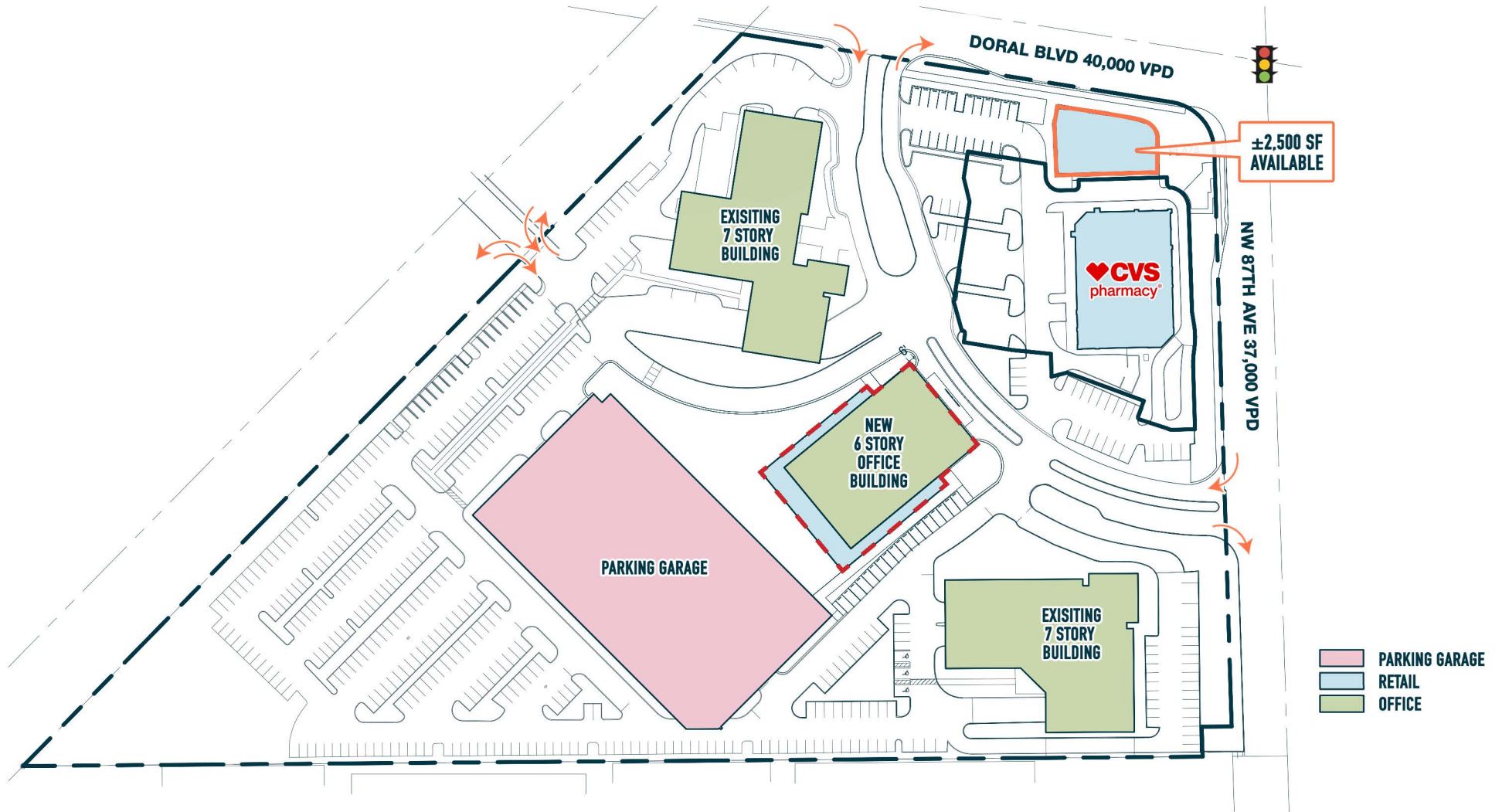
The information and images contained herein are from sources deemed reliable. However, Metro Commercial Real Estate, Inc. makes no representation whatsoever as to their accuracy or authenticity. Images shown may be modified for illustrative purposes. Images may be out-of-date and not current. 11.13.24

DORAL CENTER  
**DORAL, FL**  
DORAL BLVD & NW 87TH AVE



MetroCommercial.com

# SITE PLAN



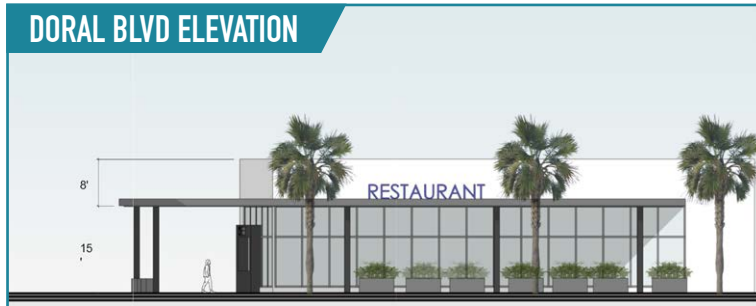
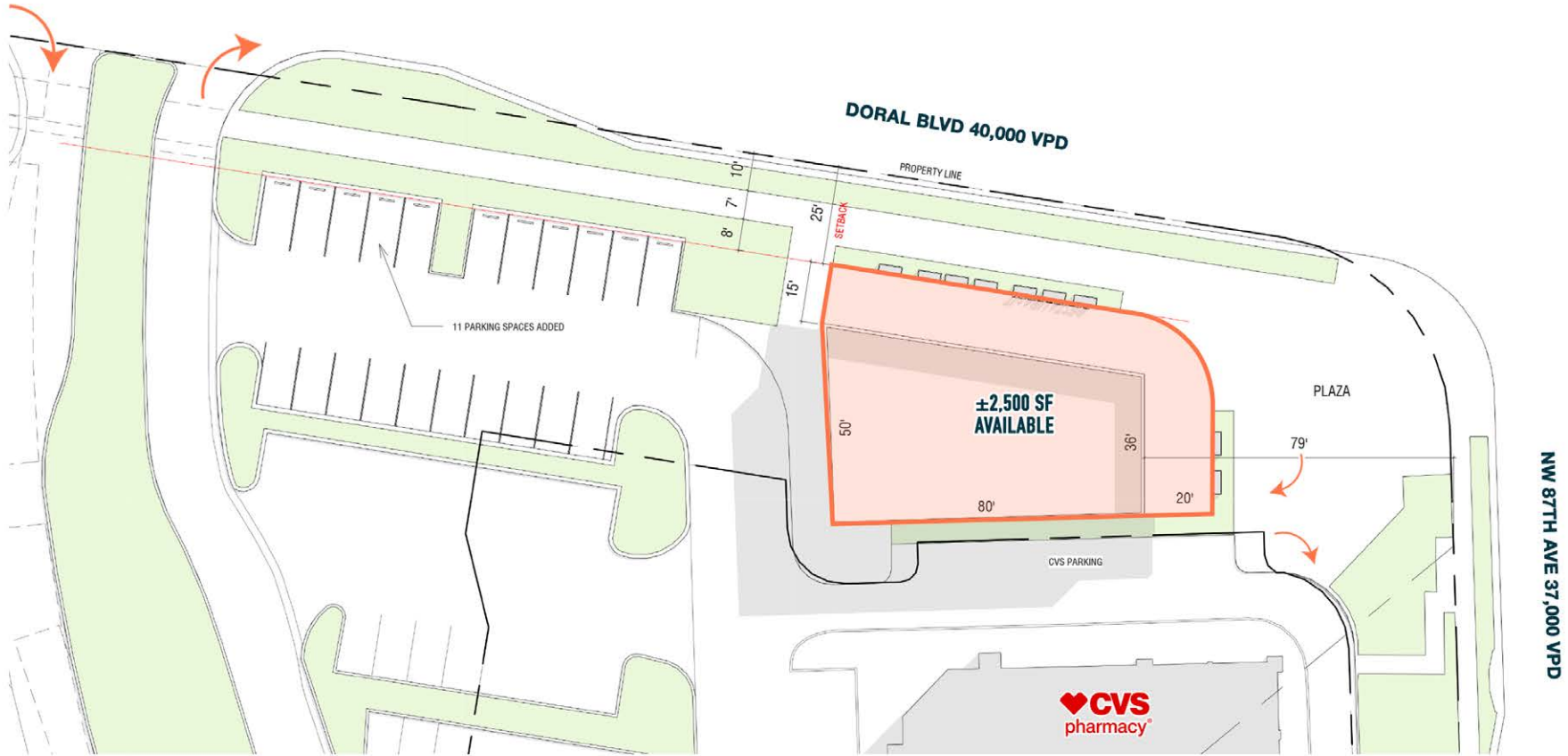
The information and images contained herein are from sources deemed reliable. However, Metro Commercial Real Estate, Inc. makes no representation whatsoever as to their accuracy or authenticity. Images shown may be modified for illustrative purposes. Images may be out-of-date and not current. 11.13.24

DORAL CENTER  
**DORAL, FL**  
DORAL BLVD & NW 87TH AVE



MetroCommercial.com

# FLOOR PLAN



The information and images contained herein are from sources deemed reliable. However, Metro Commercial Real Estate, Inc. makes no representation whatsoever as to their accuracy or authenticity. Images shown may be modified for illustrative purposes. Images may be out-of-date and not current. 11.13.24

**DORAL CENTER**  
**DORAL, FL**  
 DORAL BLVD & NW 87TH AVE



MetroCommercial.com

# RENDERINGS



The information and images contained herein are from sources deemed reliable. However, Metro Commercial Real Estate, Inc. makes no representation whatsoever as to their accuracy or authenticity. Images shown may be modified for illustrative purposes. Images may be out-of-date and not current. 11.13.24

DORAL CENTER  
**DORAL, FL**  
DORAL BLVD & NW 87TH AVE



MetroCommercial.com