

FORMER FRIENDLY'S  
**TOMS RIVER, NJ**

981 NJ-37

±3,973 SF FORMER FRIENDLY'S RESTAURANT AVAILABLE FOR LEASE ON 1.34 ACRES

POTENTIAL REDEVELOPMENT!

AREA RETAILERS



**FREESTANDING BUILDING ON MAJOR CORRIDOR**



MetroCommercial.com | PLYMOUTH MEETING, PA | MOUNT LAUREL, NJ | MIAMI, FL | PHILADELPHIA, PA

**get in touch.**

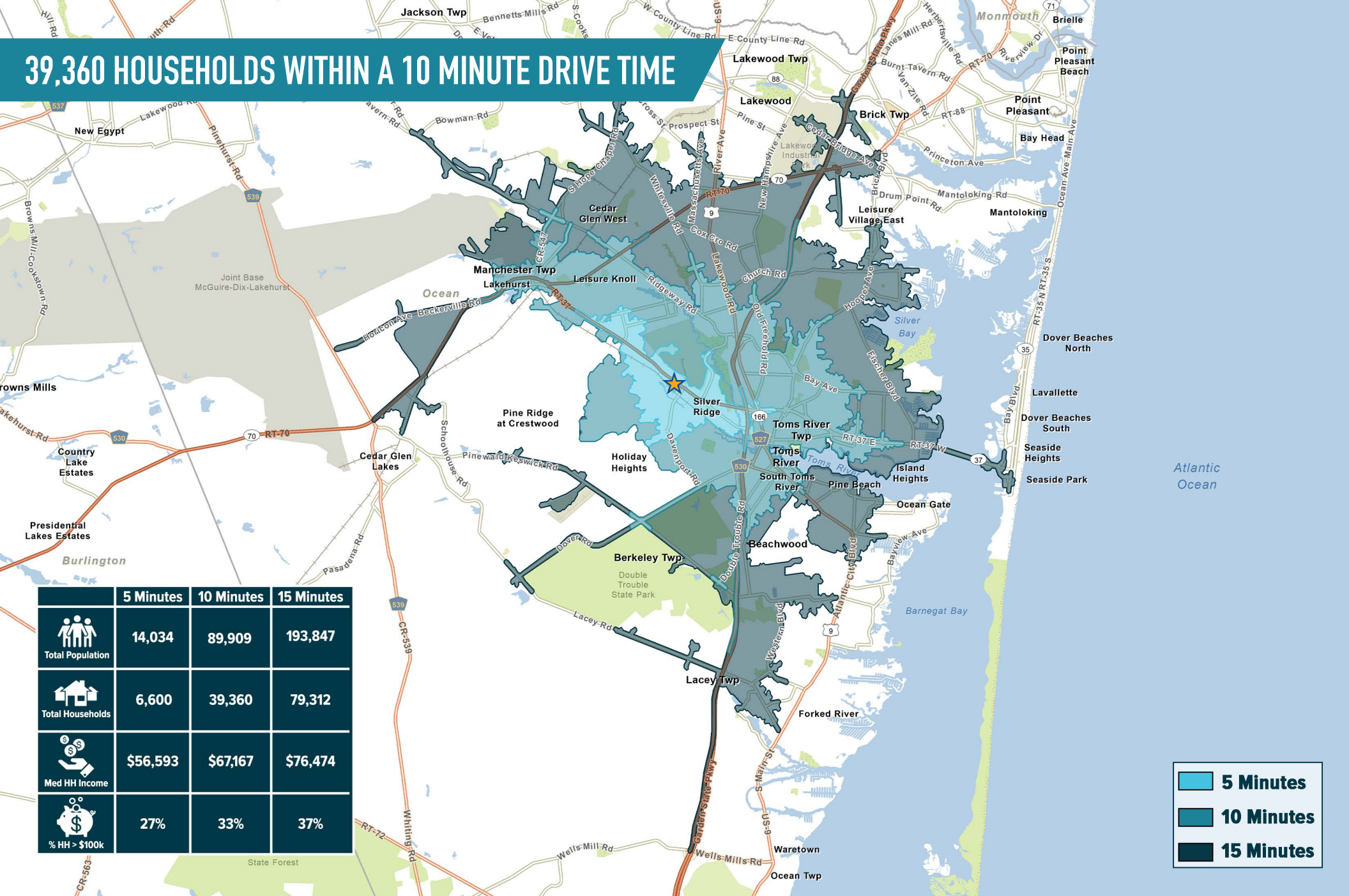
**DAVID JUDD**

office 856.866.1900  
direct 856.222.3037  
djudd@metrocommercial.com

**JOE DOUGHERTY**

office 610.825.5222  
direct 610.260.2670  
jdougherty@metrocommercial.com

# 39,360 HOUSEHOLDS WITHIN A 10 MINUTE DRIVE TIME



	5 Minutes	10 Minutes	15 Minutes
Total Population	14,034	89,909	193,847
Total Households	6,600	39,360	79,312
Med HH Income	\$56,593	\$67,167	\$76,474
% HH > \$100k	27%	33%	37%

- 5 Minutes
- 10 Minutes
- 15 Minutes

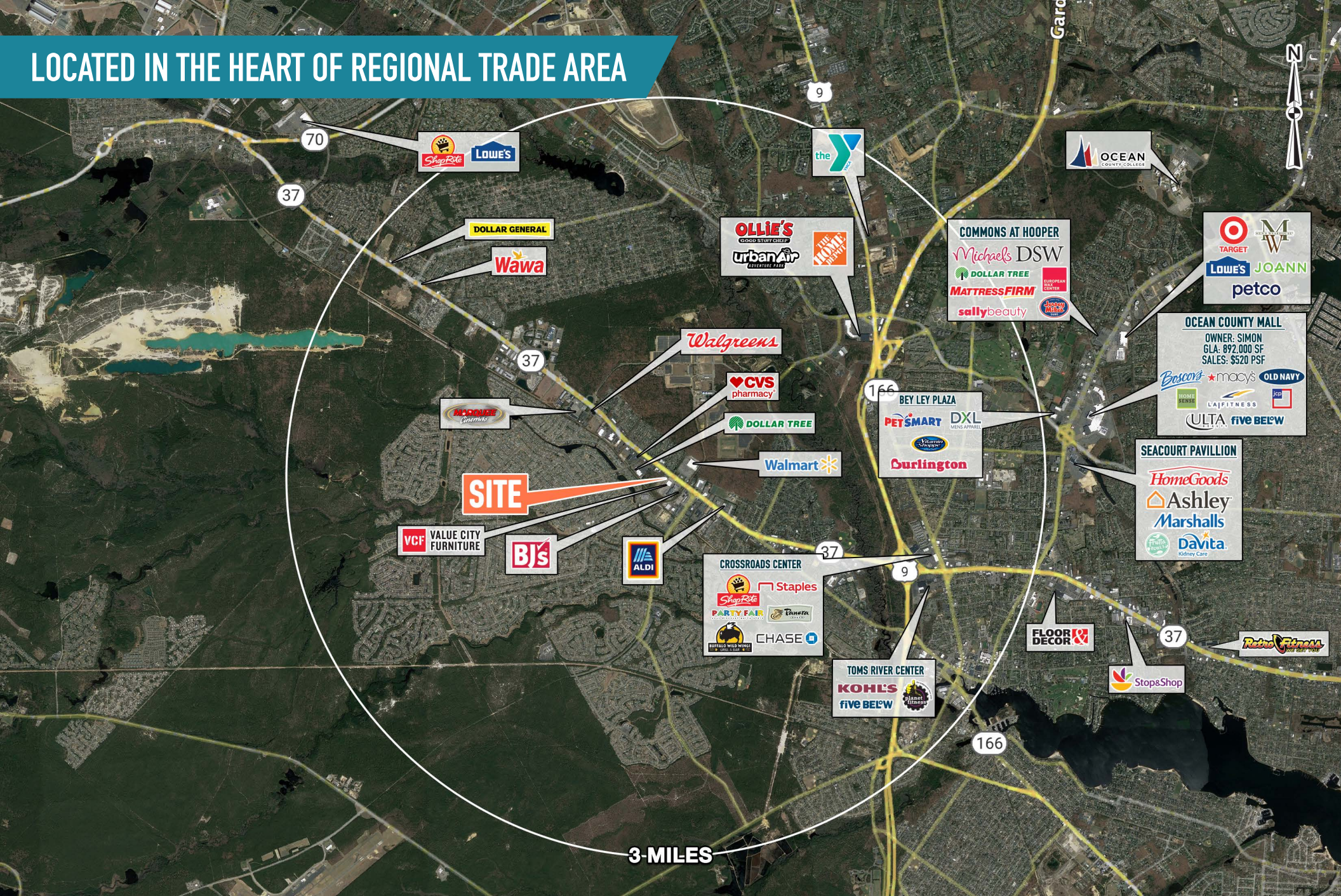
The information and images contained herein are from sources deemed reliable. However, Metro Commercial Real Estate, Inc. makes no representation whatsoever as to their accuracy or authenticity. Images shown may be modified for illustrative purposes. Images may be out-of-date and not current. 03.16.23

FORMER FRIENDLY'S  
**TOMS RIVER, NJ**  
 981 NJ-37



MetroCommercial.com

# LOCATED IN THE HEART OF REGIONAL TRADE AREA



The information and images contained herein are from sources deemed reliable. However, Metro Commercial Real Estate, Inc. makes no representation whatsoever as to their accuracy or authenticity. Images shown may be modified for illustrative purposes. Images may be out-of-date and not current. 03.16.23

FORMER FRIENDLY'S  
**TOMS RIVER, NJ**  
 981 NJ-37



MetroCommercial.com

# CROSS ACCESS WITH VALUE CITY FURNITURE & BJ'S WHOLESALE



TOMS RIVER • KIA

41,360 VPD  
37

Bank of America

Walmart

DOLLAR TREE

SUPER WASH & QUICK LUBE

FAVORITES  
Off-Track Wagering & Sports Bar

±3,973 SF  
ON ±1.34 AC  
73 PARKING SPACES

VCF VALUE CITY FURNITURE

BJ'S

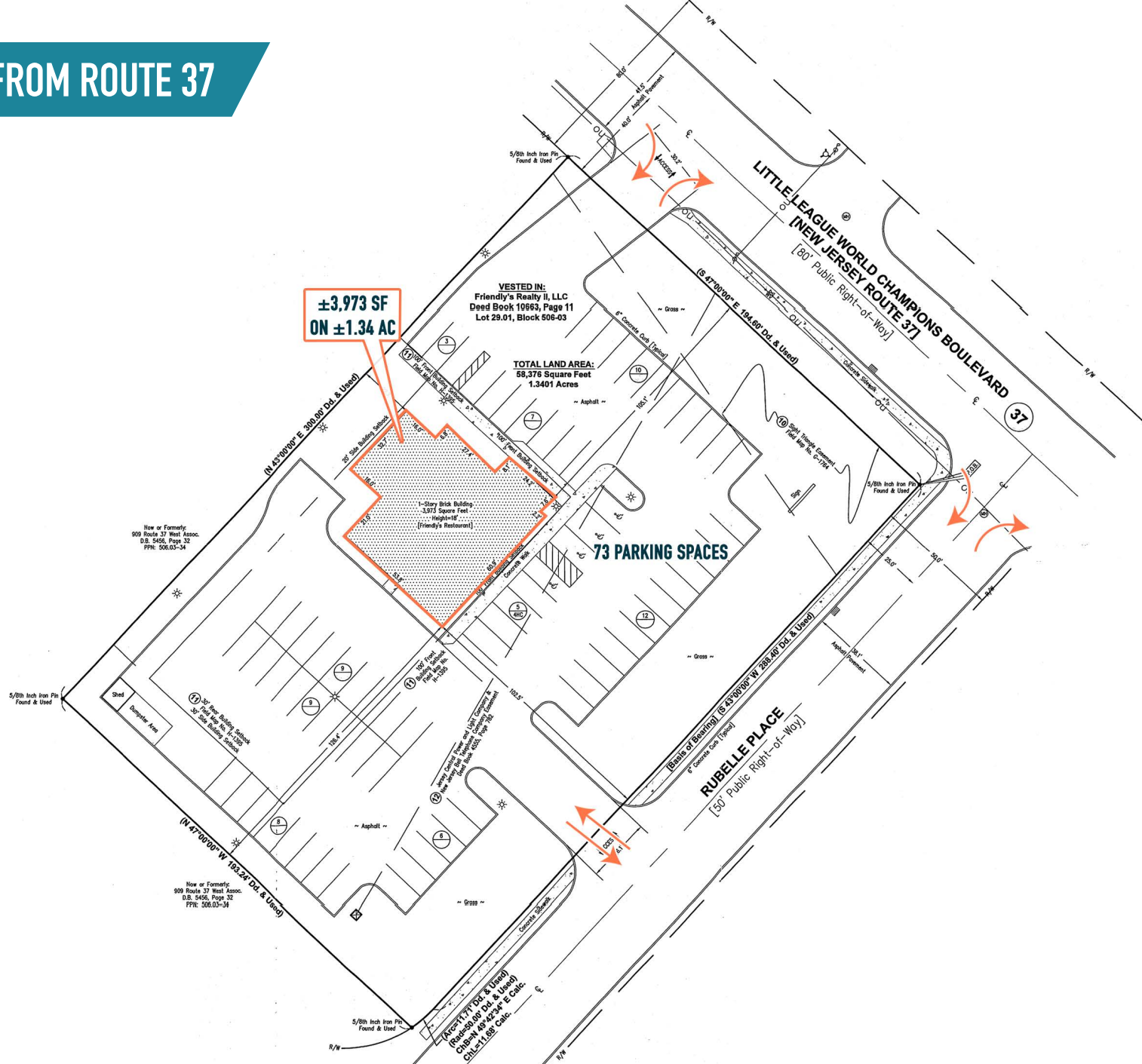
The information and images contained herein are from sources deemed reliable. However, Metro Commercial Real Estate, Inc. makes no representation whatsoever as to their accuracy or authenticity. Images shown may be modified for illustrative purposes. Images may be out-of-date and not current. 03.16.23

FORMER FRIENDLY'S  
**TOMS RIVER, NJ**  
981 NJ-37

METRO  
COMMERCIAL

MetroCommercial.com

EASY ACCESS FROM ROUTE 37



The information and images contained herein are from sources deemed reliable. However, Metro Commercial Real Estate, Inc. makes no representation whatsoever as to their accuracy or authenticity. Images shown may be modified for illustrative purposes. Images may be out-of-date and not current. 03.16.23

FORMER FRIENDLY'S  
**TOMS RIVER, NJ**  
981 NJ-37



MetroCommercial.com

# EXTERIOR PHOTOS



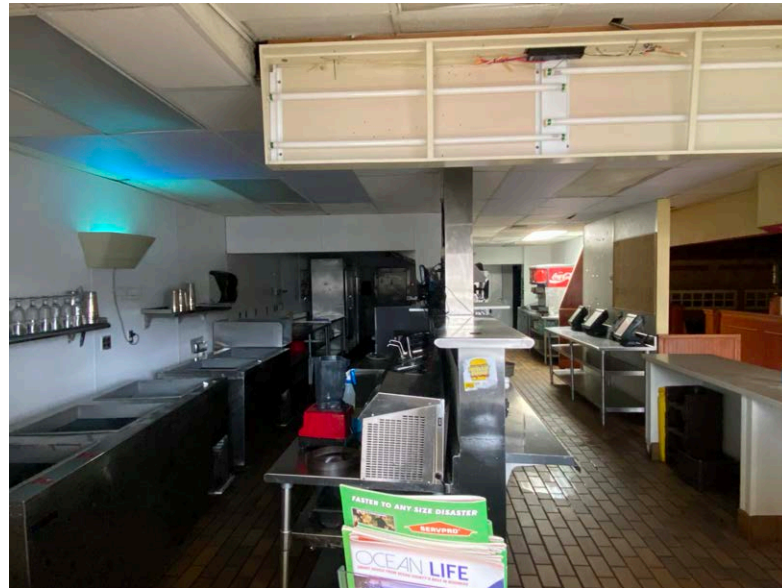
The information and images contained herein are from sources deemed reliable. However, Metro Commercial Real Estate, Inc. makes no representation whatsoever as to their accuracy or authenticity. Images shown may be modified for illustrative purposes. Images may be out-of-date and not current. 03.16.23

FORMER FRIENDLY'S  
**TOMS RIVER, NJ**  
981 NJ-37



MetroCommercial.com

# INTERIOR PHOTOS



The information and images contained herein are from sources deemed reliable. However, Metro Commercial Real Estate, Inc. makes no representation whatsoever as to their accuracy or authenticity. Images shown may be modified for illustrative purposes. Images may be out-of-date and not current. 03.16.23

FORMER FRIENDLY'S  
**TOMS RIVER, NJ**  
981 NJ-37



MetroCommercial.com