

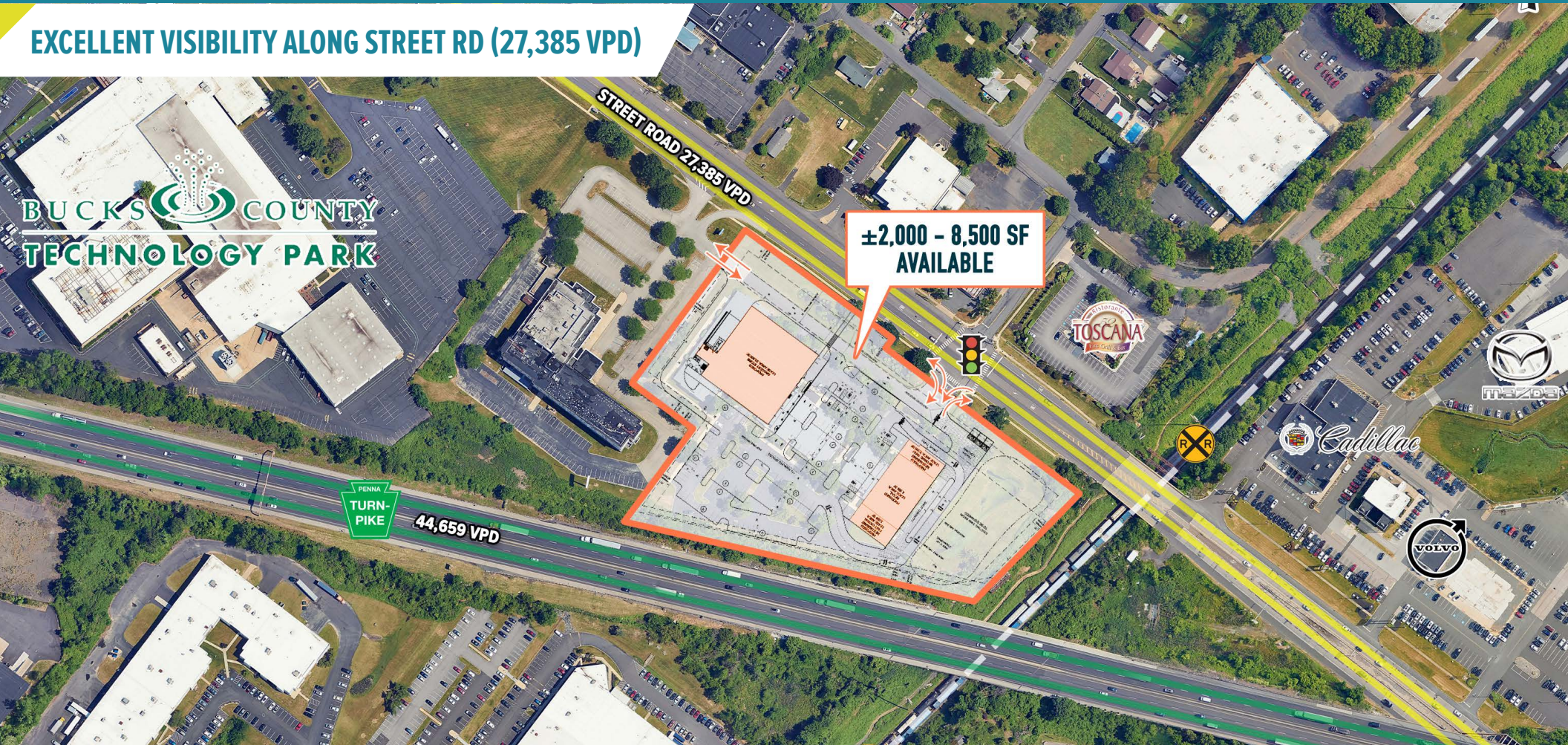
FEASTERVILLE-TREVOSE, PA

4610 E STREET RD

±2,000 - 8,500 SF AVAILABLE FOR LEASE

PHILADELPHIA MSA

EXCELLENT VISIBILITY ALONG STREET RD (27,385 VPD)



LEASED BY:



METRO[®]
COMMERCIAL
REAL ESTATE, INC.

OWNED & MANAGED BY:



get in touch.

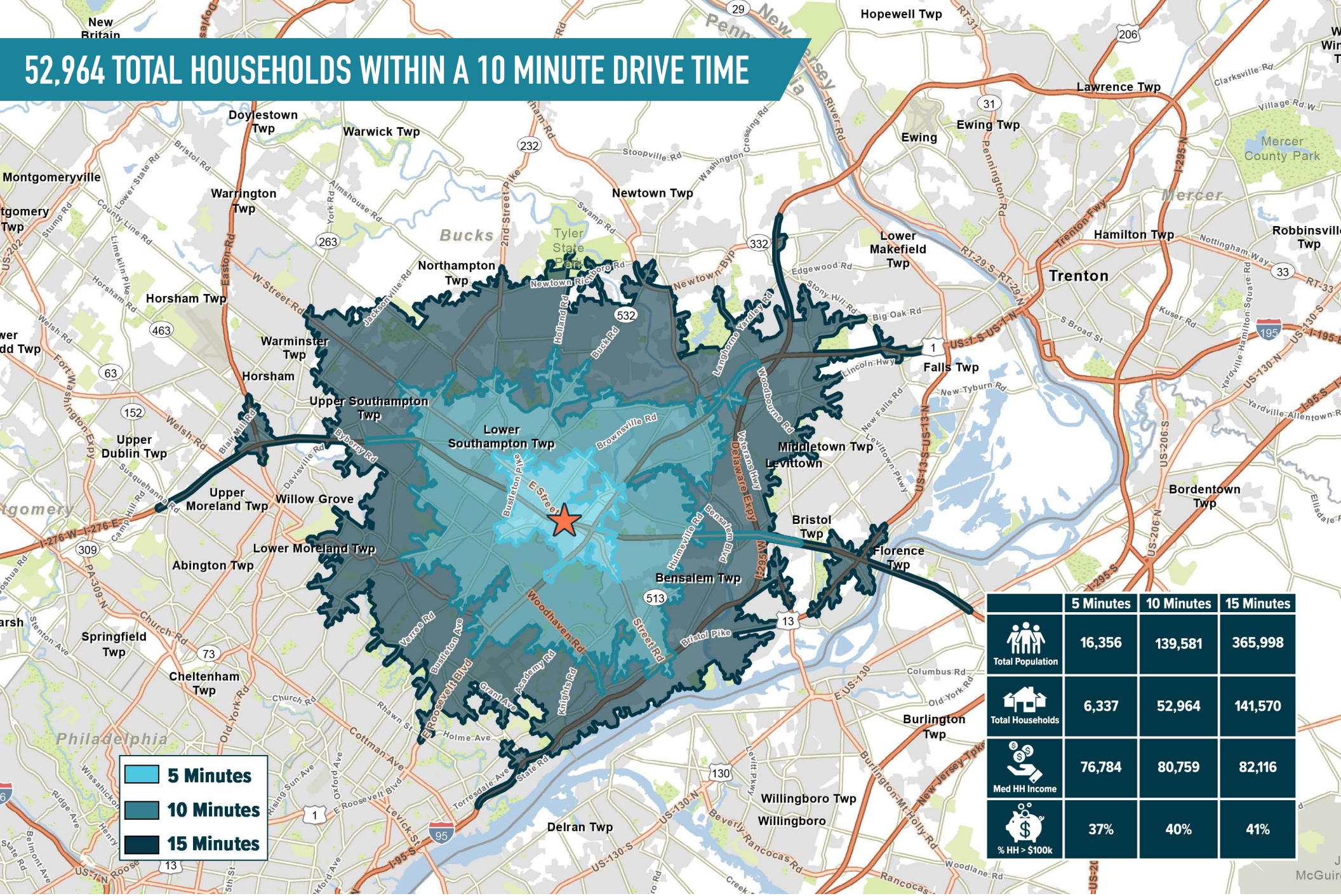
SHANE HART

office 215.893.0300

direct 215.282.0151

shart@metrocommercial.com

52,964 TOTAL HOUSEHOLDS WITHIN A 10 MINUTE DRIVE TIME



5 Minutes
 10 Minutes
 15 Minutes

	5 Minutes	10 Minutes	15 Minutes
Total Population	16,356	139,581	365,998
Total Households	6,337	52,964	141,570
Med HH Income	76,784	80,759	82,116
% HH > \$100k	37%	40%	41%

The information and images contained herein are from sources deemed reliable. However, Metro Commercial Real Estate, Inc. makes no representation whatsoever as to their accuracy or authenticity. Images shown may be modified for illustrative purposes. Images may be out-of-date and not current. 12.09.24

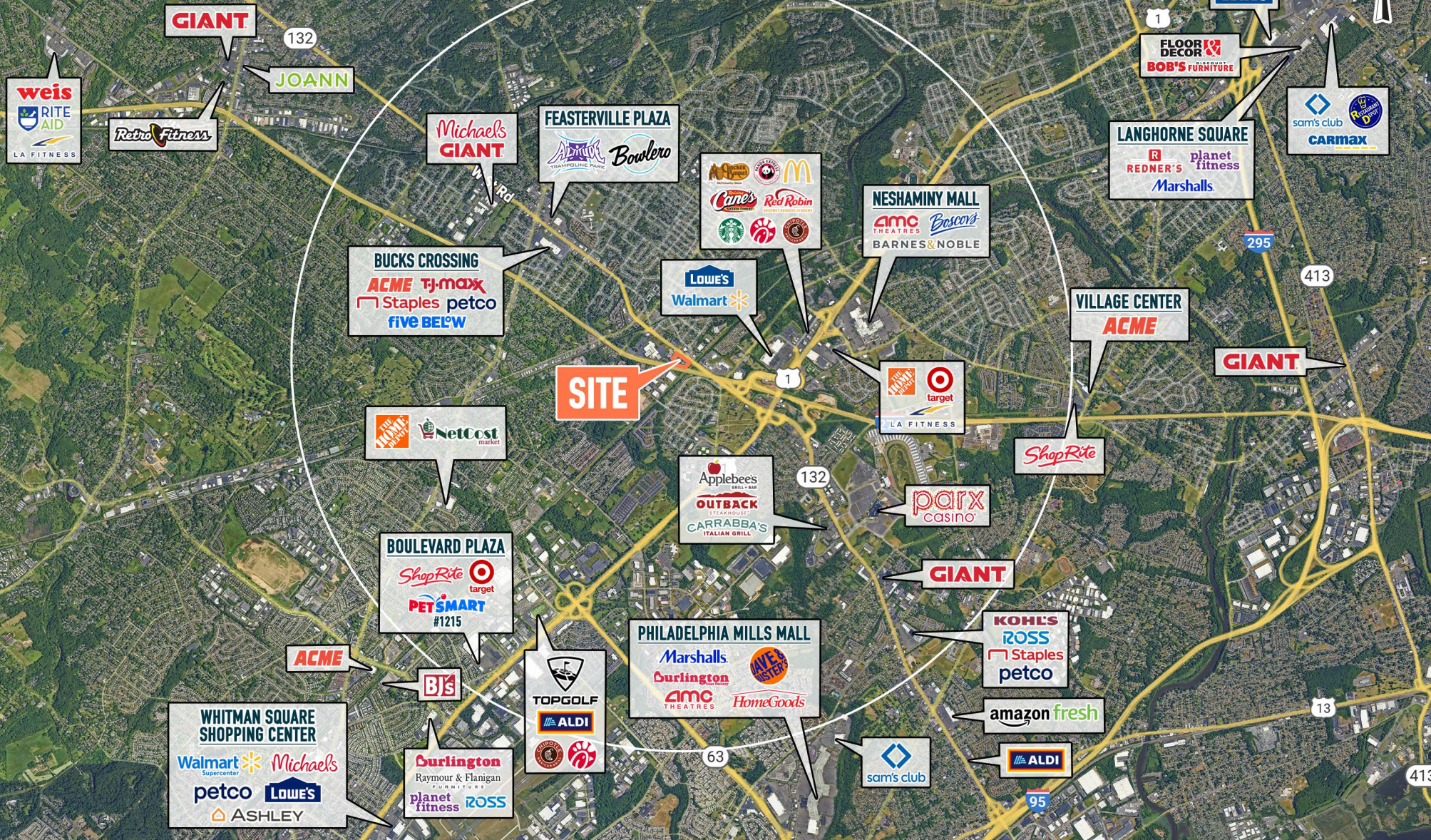
FEASTERVILLE-TREVOSE, PA
 4610 E STREET RD



MetroCommercial.com

MARKET AERIAL

3 MILES



The information and images contained herein are from sources deemed reliable. However, Metro Commercial Real Estate, Inc. makes no representation whatsoever as to their accuracy or authenticity. Images shown may be modified for illustrative purposes. Images may be out-of-date and not current. 12.09.24

FEASTERVILLE-TREVOSE, PA

4610 E STREET RD



MetroCommercial.com

ZONING: GENERAL COMMERCIAL (G-C)

BUCKS COUNTY
TECHNOLOGY PARK

STREET ROAD 27,385 VPD

±2,000 - 8,500 SF
AVAILABLE

PENNA
TURN-
PIKE
44,659 VPD

TOSCANA

Cadillac

MAZDA

VOLVO

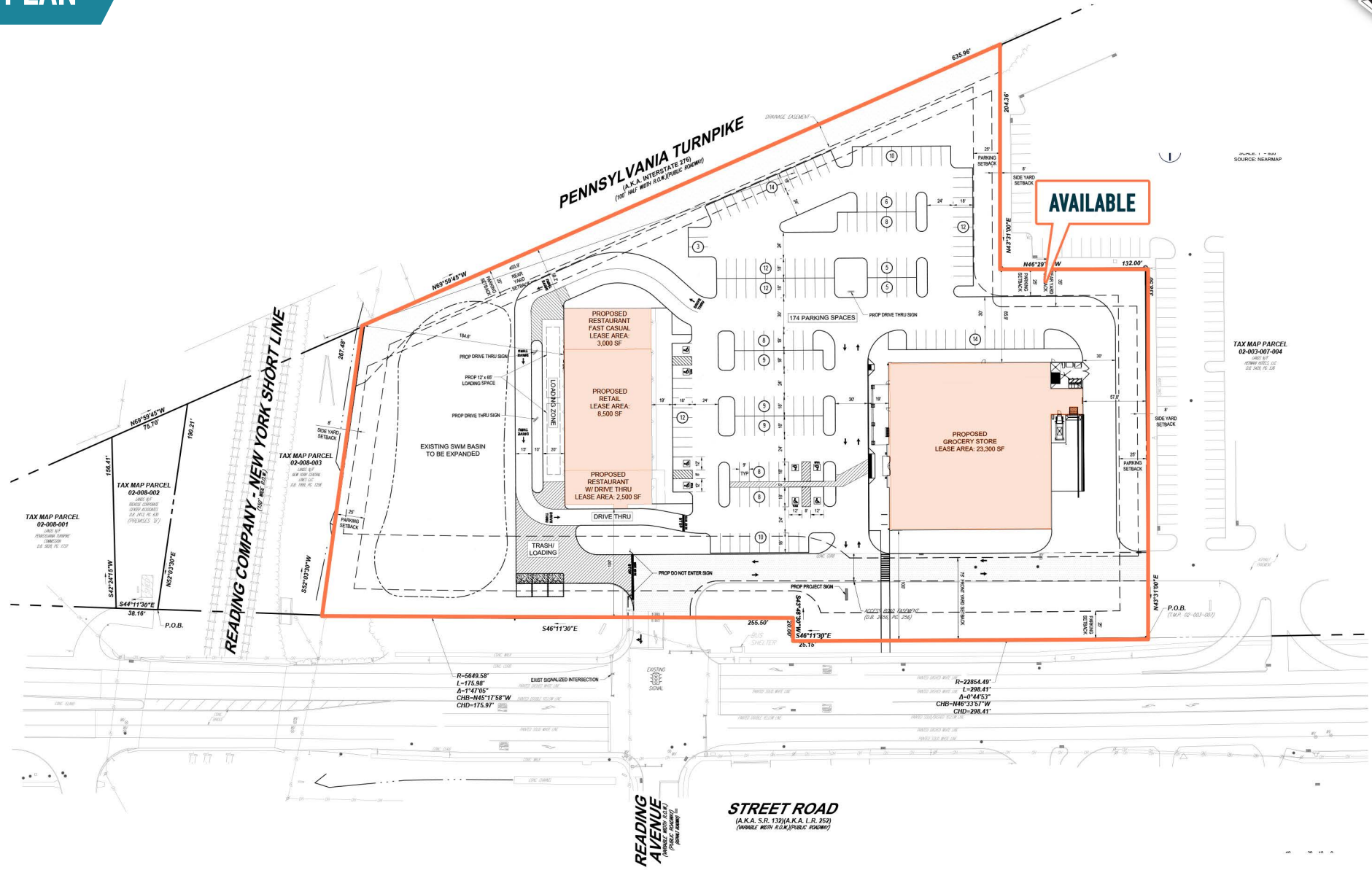
The information and images contained herein are from sources deemed reliable. However, Metro Commercial Real Estate, Inc. makes no representation whatsoever as to their accuracy or authenticity. Images shown may be modified for illustrative purposes. Images may be out-of-date and not current. 12.5.24

FEASTERVILLE-TREVOSE, PA
4610 E STREET RD

METRO
COMMERCIAL

MetroCommercial.com

SITE PLAN



The information and images contained herein are from sources deemed reliable. However, Metro Commercial Real Estate, Inc. makes no representation whatsoever as to their accuracy or authenticity. Images shown may be modified for illustrative purposes. Images may be out-of-date and not current. 12.09.24

FEASTERVILLE-TREVOSE, PA
4610 E STREET RD



MetroCommercial.com