

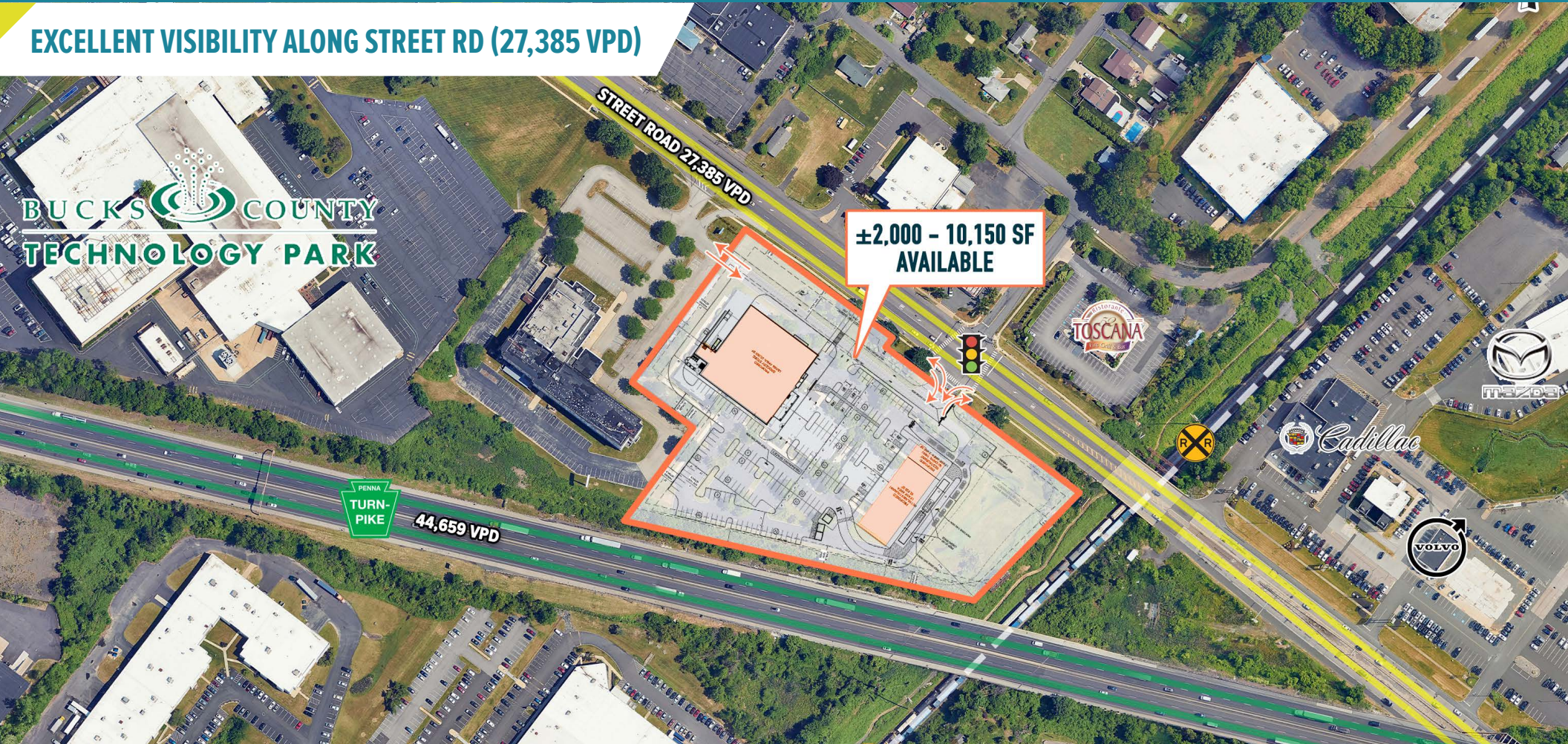
FEASTERVILLE-TREVOSE, PA

4610 E STREET RD

±2,000 - 10,150 SF AVAILABLE FOR LEASE

PHILADELPHIA MSA

EXCELLENT VISIBILITY ALONG STREET RD (27,385 VPD)



LEASED BY:



METRO
COMMERCIAL
REAL ESTATE, INC.

OWNED & MANAGED BY:



Building Better Lifestyles
A Bruce E. Toll Company

get in touch.

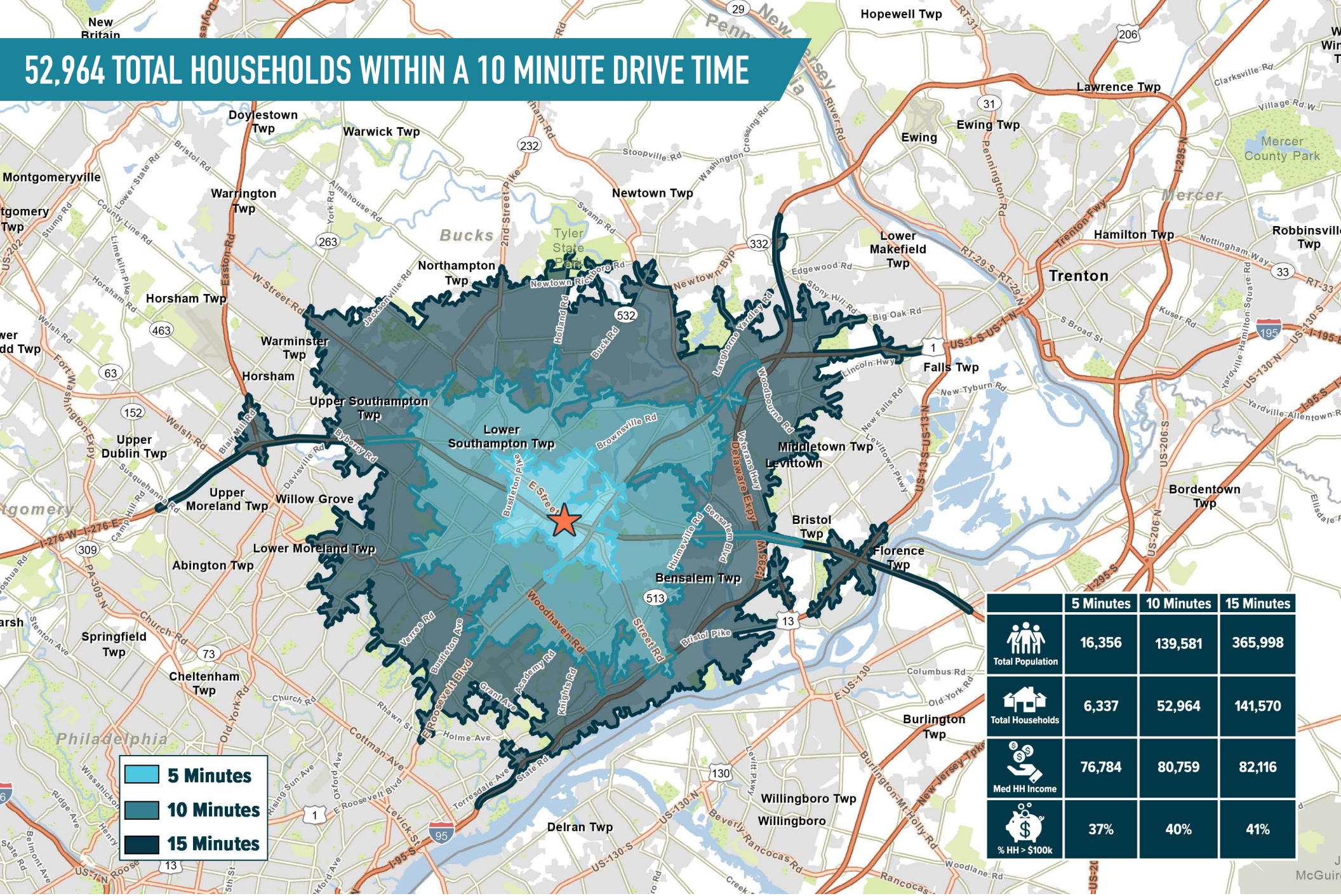
SHANE HART

office 215.893.0300

direct 215.282.0151

shart@metrocommercial.com

52,964 TOTAL HOUSEHOLDS WITHIN A 10 MINUTE DRIVE TIME



The information and images contained herein are from sources deemed reliable. However, Metro Commercial Real Estate, Inc. makes no representation whatsoever as to their accuracy or authenticity. Images shown may be modified for illustrative purposes. Images may be out-of-date and not current. 03.05.25

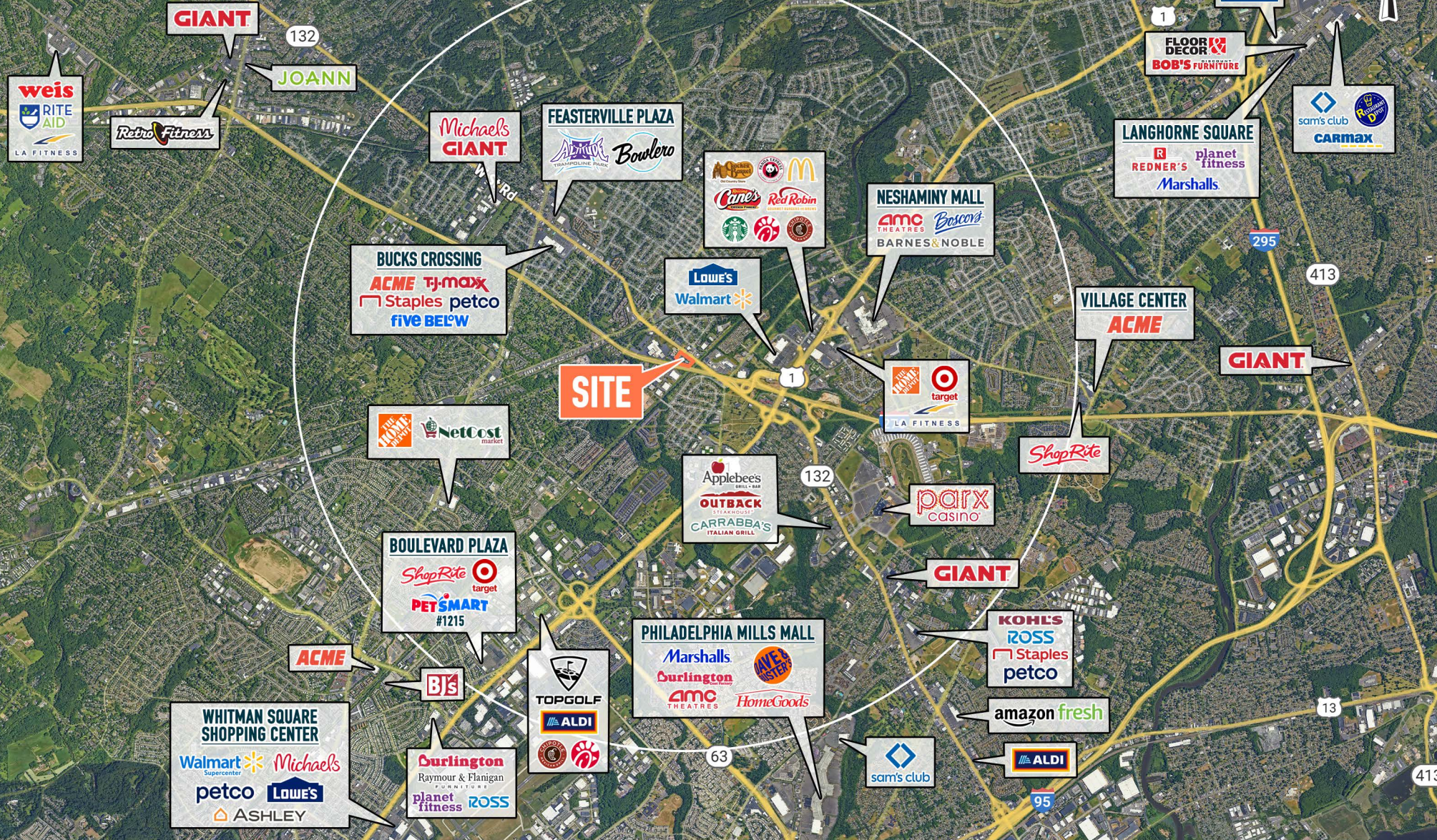
FEASTERVILLE-TREVOSE, PA
4610 E STREET RD



MetroCommercial.com

MARKET AERIAL

3 MILES



The information and images contained herein are from sources deemed reliable. However, Metro Commercial Real Estate, Inc. makes no representation whatsoever as to their accuracy or authenticity. Images shown may be modified for illustrative purposes. Images may be out-of-date and not current. 03.05.25

FEASTERVILLE-TREVOSE, PA

4610 E STREET RD



MetroCommercial.com

ZONING: GENERAL COMMERCIAL (G-C)

BUCKS COUNTY
TECHNOLOGY PARK

STREET ROAD 27,385 VPD

±2,000 - 10,150 SF
AVAILABLE

PENNA
TURN-PIKE
44,659 VPD

TOSCANA

Cadillac

MAZDA

VOLVO

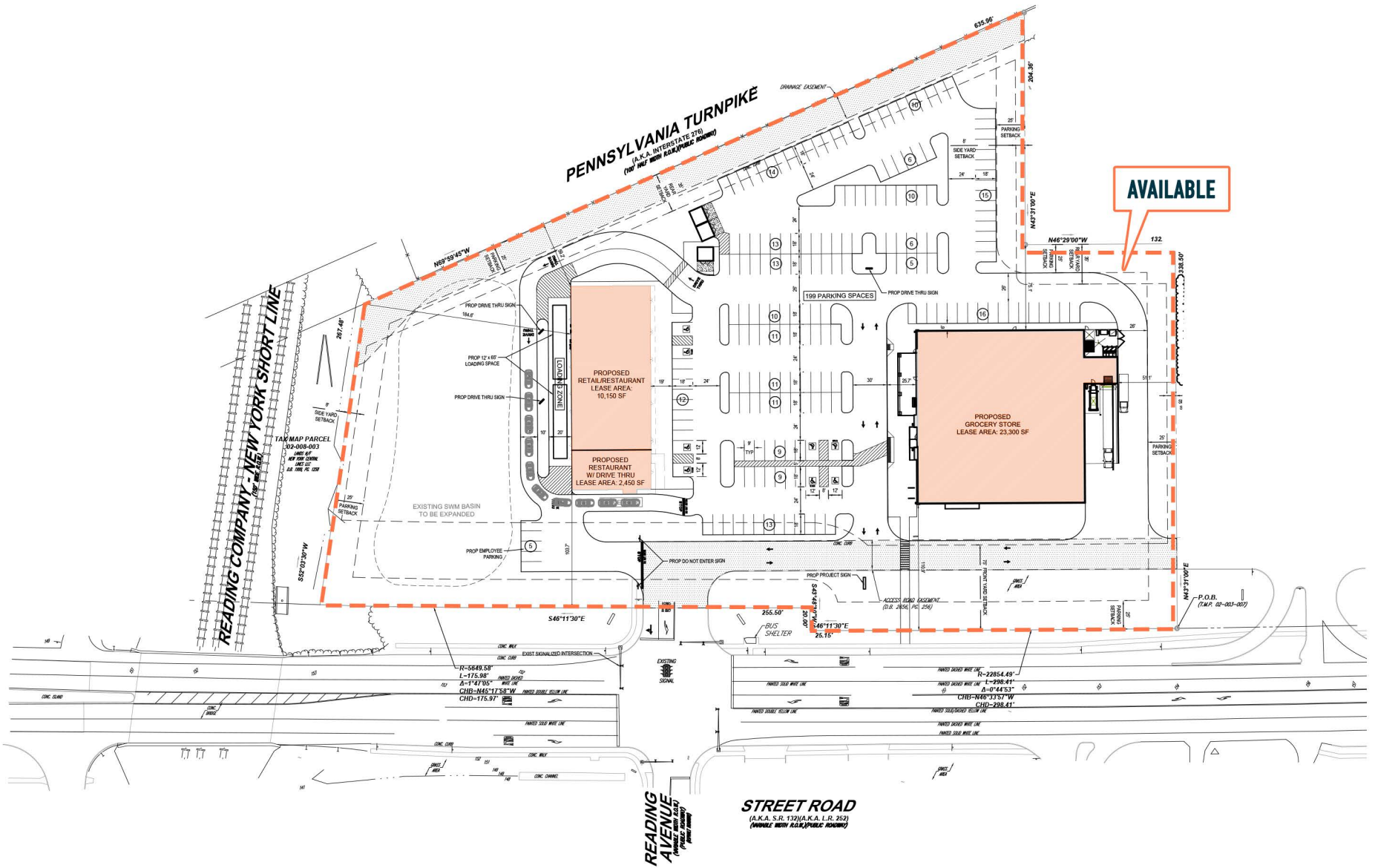
The information and images contained herein are from sources deemed reliable. However, Metro Commercial Real Estate, Inc. makes no representation whatsoever as to their accuracy or authenticity. Images shown may be modified for illustrative purposes. Images may be out-of-date and not current. 3.5.25

FEASTERVILLE-TREVOSE, PA
4610 E STREET RD

METRO
COMMERCIAL

MetroCommercial.com

SITE PLAN



The information and images contained herein are from sources deemed reliable. However, Metro Commercial Real Estate, Inc. makes no representation whatsoever as to their accuracy or authenticity. Images shown may be modified for illustrative purposes. Images may be out-of-date and not current. 03.05.25

FEASTERVILLE-TREVOSE, PA

4610 E STREET RD



MetroCommercial.com