

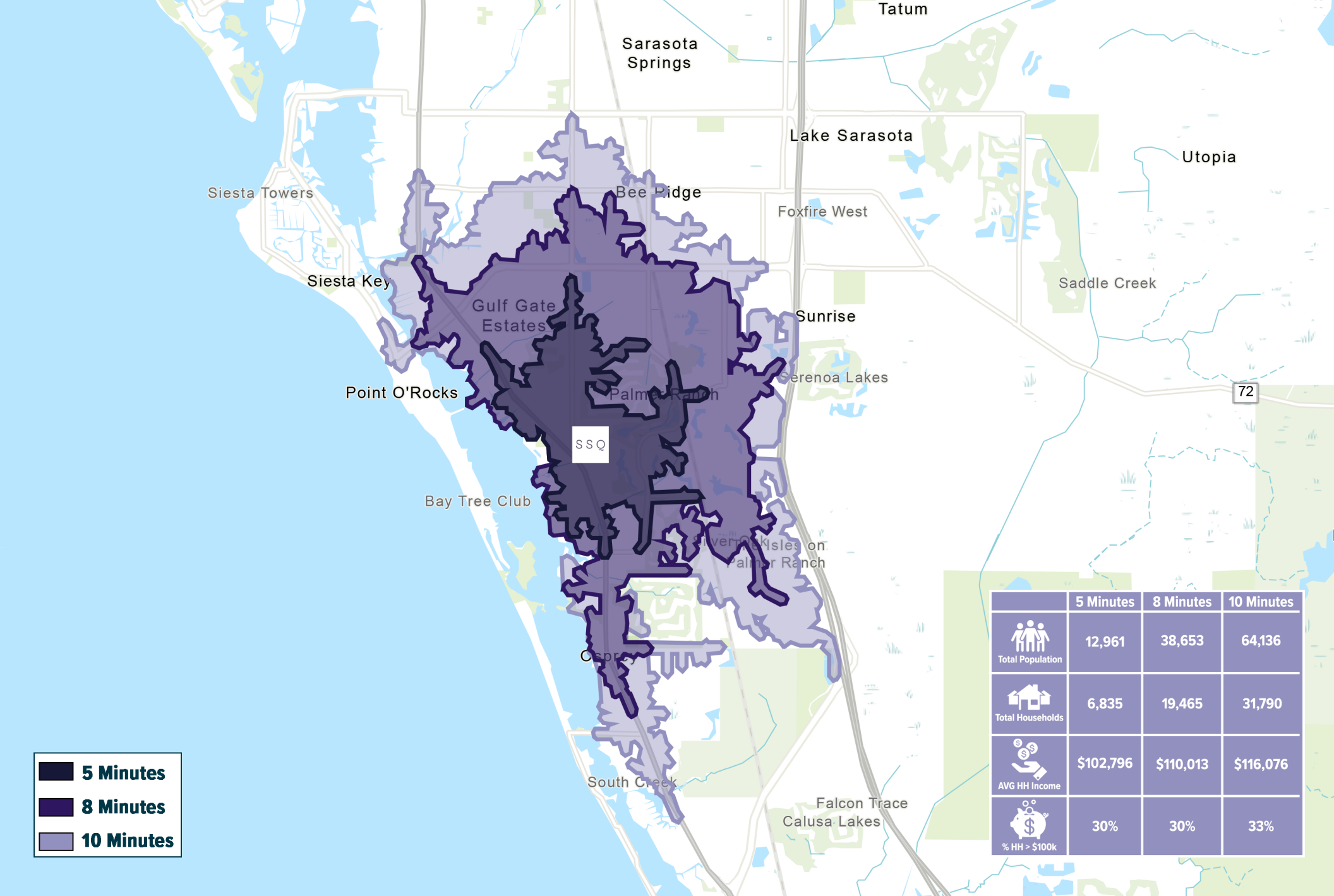


SARASOTA SQUARE





8201 S Tamiami Trail, Sarasota, FL 34238

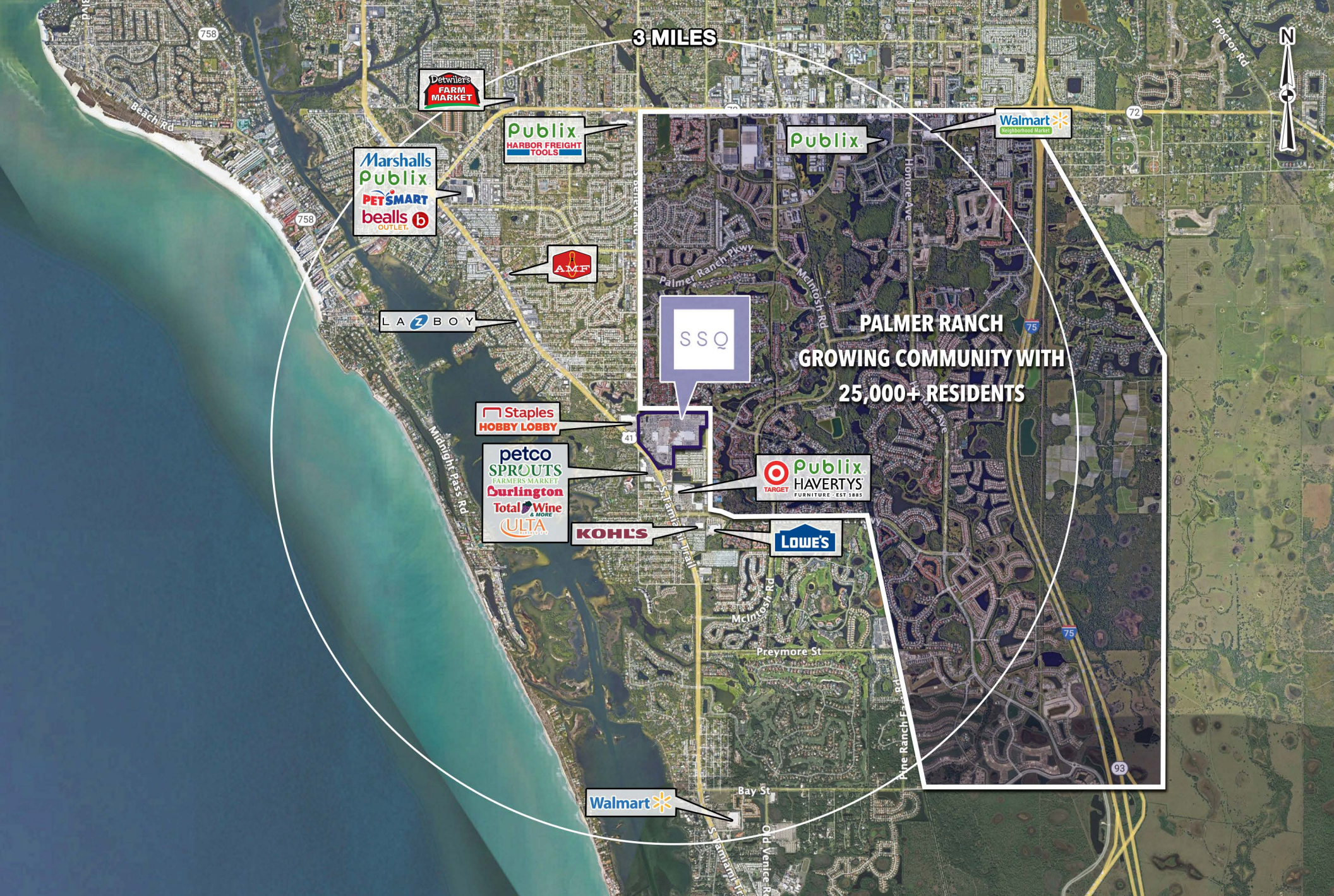
±500,000 SF Mixed-Use Redevelopment
Featuring 1,200 Residential Units
Anchored by Whole Foods and Costco:
Restaurant, Anchor, and Pad Spaces Available





5 Minutes
 8 Minutes
 10 Minutes

	5 Minutes	8 Minutes	10 Minutes
 Total Population	12,961	38,653	64,136
 Total Households	6,835	19,465	31,790
 AVG HH Income	\$102,796	\$110,013	\$116,076
 % HH > \$100k	30%	30%	33%



3 MILES

PALMER RANCH
GROWING COMMUNITY WITH
25,000+ RESIDENTS

SSQ

SSQ

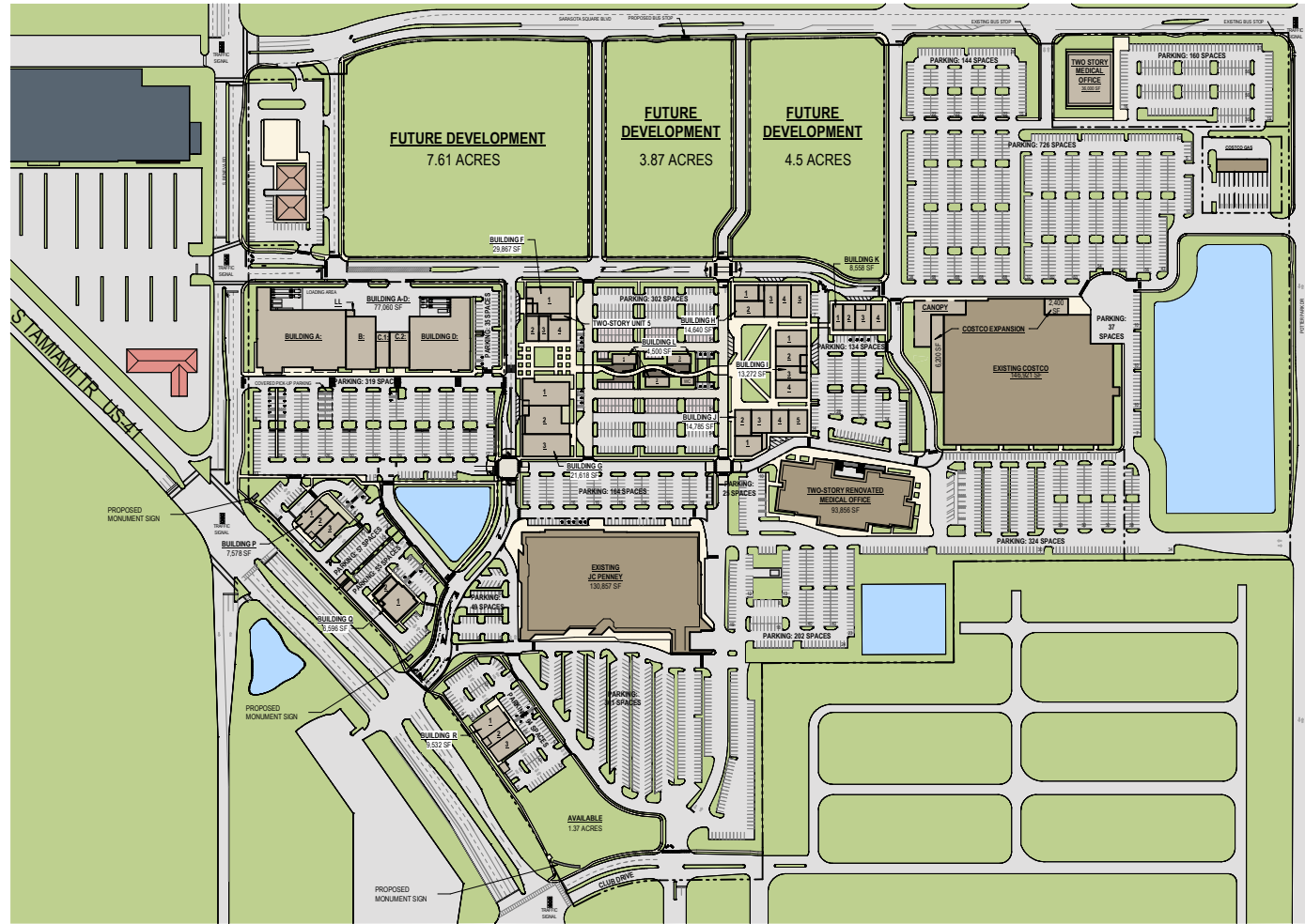
METRO
COMMERCIAL

OKW
Architects

torburn partners

DEVELOPMENT SUMMARY	
SITE AREA:	96.88 ACRES
PARKING:	3,208 SPACES
RETAIL:	
COSTCO:	155,521 SF
JC PENNEY:	130,857 SF
BUILDING A: WHOLEFOODS	35,805 SF
BUILDING B:	9,971 SF
BUILDING C-1:	3,242 SF
BUILDING C-2:	4,670 SF
BUILDING D: HOMESENSE	23,372 SF
BUILDING F-1 - TWO STORY:	14,805 SF
BUILDING F-2:	2,607 SF
BUILDING F-3:	1,551 SF
BUILDING F-4:	3,143 SF
BUILDING F-5 - LEVEL 2:	8,301 SF
BUILDING G-1:	7,311 SF
BUILDING G-2:	7,205 SF
BUILDING G-3:	7,102 SF
BUILDING H-1:	2,495 SF
BUILDING H-2:	3,078 SF
BUILDING H-3:	2,828 SF
BUILDING H-4:	2,828 SF
BUILDING H-5:	3,511 SF
BUILDING I-1:	3,309 SF
BUILDING I-2:	3,645 SF
BUILDING I-3:	2,614 SF
BUILDING I-4:	3,704 SF
BUILDING J-1:	3,462 SF
BUILDING J-2:	2,777 SF
BUILDING J-3:	3,091 SF
BUILDING J-4:	2,586 SF
BUILDING J-5:	2,869 SF
BUILDING K-1:	1,734 SF
BUILDING K-2:	2,047 SF
BUILDING K-3: CAVA	2,321 SF
BUILDING K-4:	2,456 SF
BUILDING L-1: CHIPOTLE	1,500 SF
BUILDING L-2:	1,500 SF
BUILDING L-3:	1,500 SF
BUILDING P-1:	2,681 SF
BUILDING P-2:	2,177 SF
BUILDING P-3:	2,720 SF
BUILDING Q-1:	5,037 SF
BUILDING Q-2:	1,559 SF
BUILDING R-1:	4,004 SF
BUILDING R-2:	2,059 SF
BUILDING R-3:	3,469 SF
TOTAL RETAIL:	495,024 SF
MEDICAL OFFICE:	
NEW TWO-STORY:	36,000 SF
RENOVATED TWO-STORY:	93,856 SF
TOTAL MEDICAL OFFICE:	129,856 SF

* LEASEABLE SF



1 OVERALL SITE PLAN
2 SCALE: 1" = 300'-0"





GET IN TOUCH

ALYONA TSUTSKOVA

office 786.671.4029
direct 786.470.4906
alyona@metrocommercial.com

ROD CASTAN, CRRP

office 786.671.4020
direct 786.388.6470
rcastan@metrocommercial.com

SSQ

