

LEBANON, PA

1651 EAST CUMBERLAND STREET

±1 AC AND UP TO ±8,990 SF PAD ADJACENT TO WEIS AVAILABLE FOR LEASE; GLA: 47,405 SF

LEBANON MSA

AREA RETAILERS



RARE ±1 ACRE PAD SITE AVAILABLE FOR LEASE ON ROUTE 422 (15,400 VPD)



LEASED BY:



METRO[®]
COMMERCIAL
REAL ESTATE, INC.

OWNED & MANAGED BY:



get in touch.

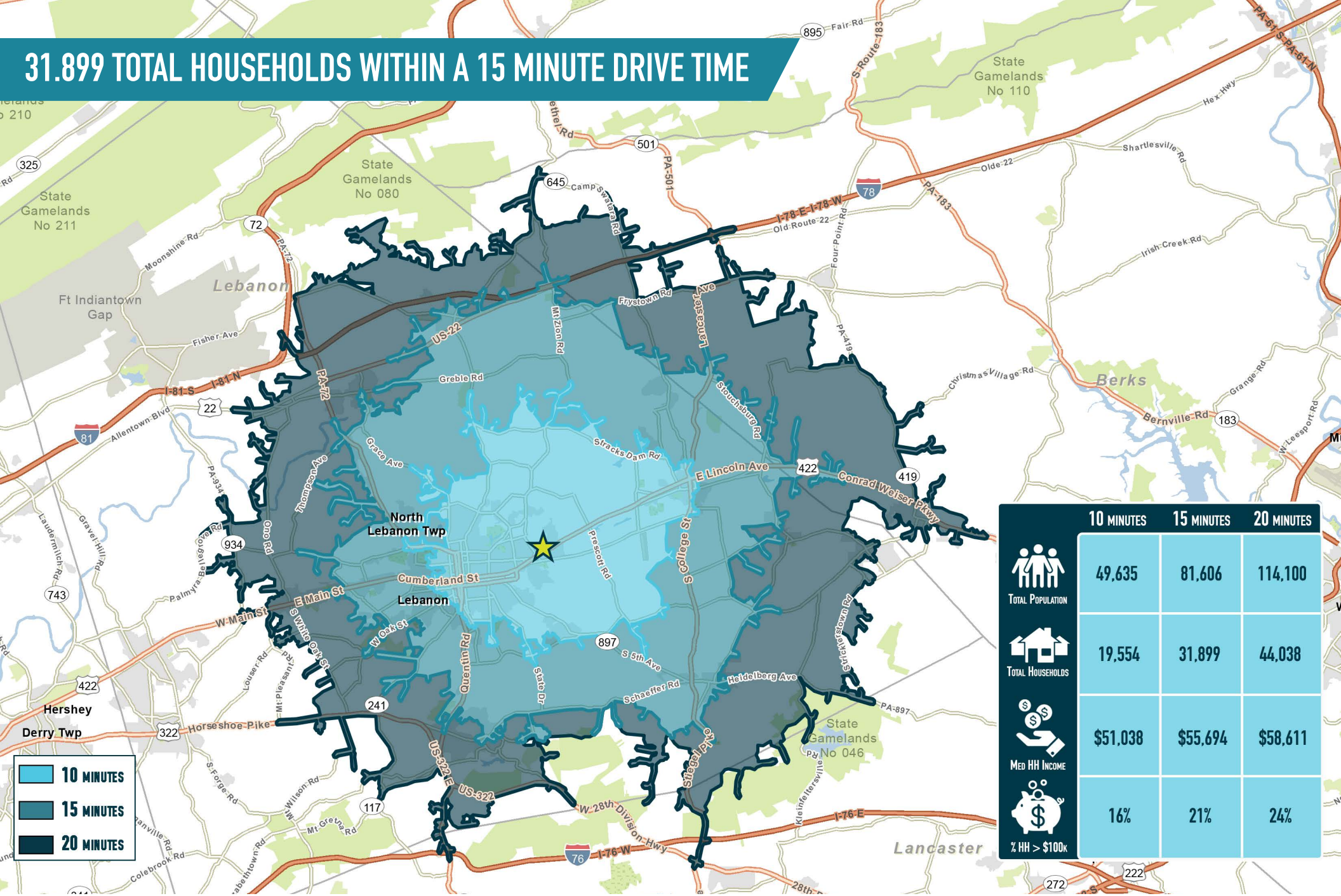
BRENDAN MULLIGAN

office 610.825.5222

direct 610.260.2688

bmulligan@metrocommercial.com

31.899 TOTAL HOUSEHOLDS WITHIN A 15 MINUTE DRIVE TIME



	10 MINUTES	15 MINUTES	20 MINUTES
TOTAL POPULATION	49,635	81,606	114,100
TOTAL HOUSEHOLDS	19,554	31,899	44,038
MED HH INCOME	\$51,038	\$55,694	\$58,611
% HH > \$100K	16%	21%	24%

10 MINUTES
15 MINUTES
20 MINUTES

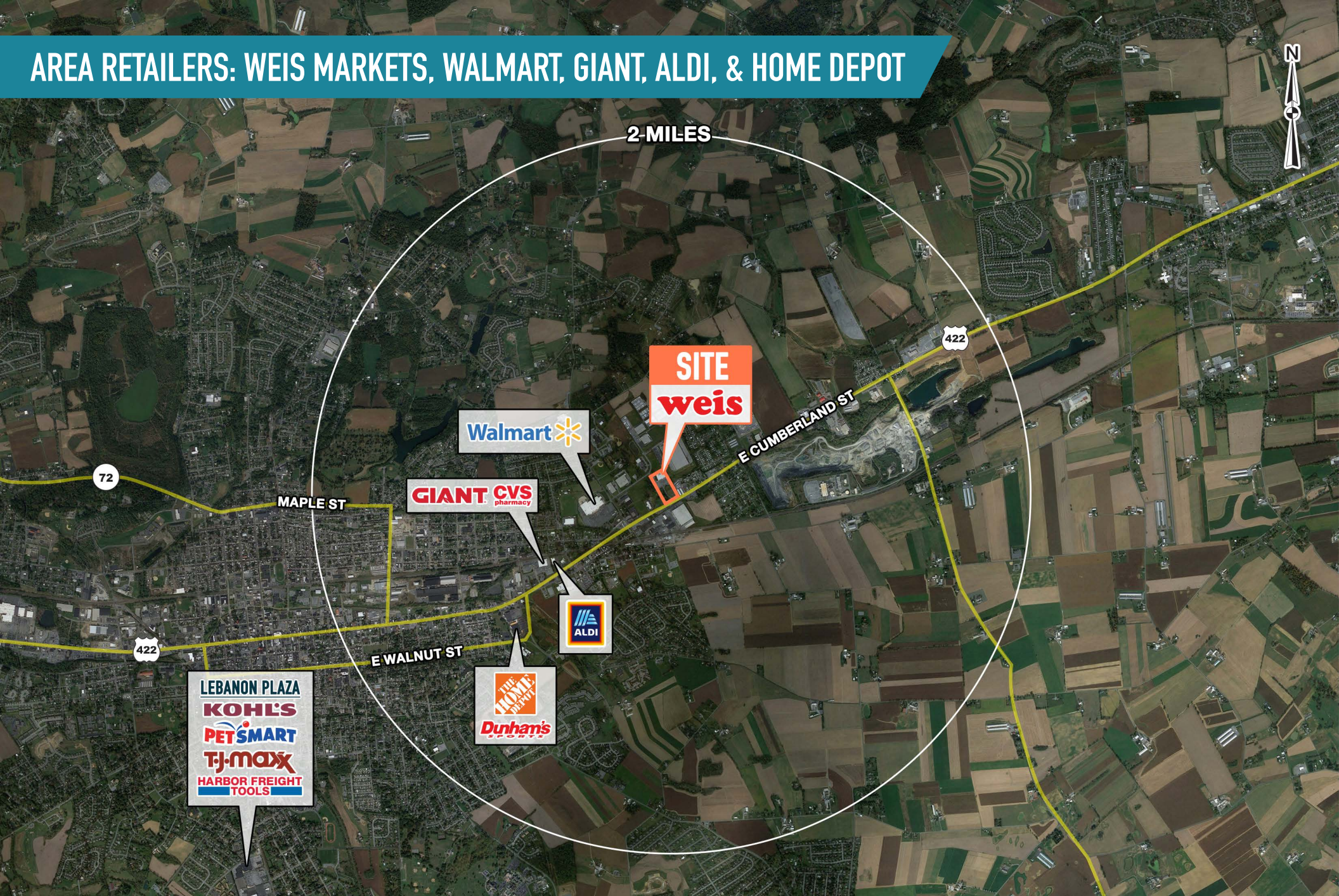
The information and images contained herein are from sources deemed reliable. However, Metro Commercial Real Estate, Inc. makes no representation whatsoever as to their accuracy or authenticity. Images shown may be modified for illustrative purposes. Images may be out-of-date and not current. 12.03.24

LEBANON, PA
1651 EAST CUMBERLAND STREET



www.metrocommercial.com

AREA RETAILERS: WEIS MARKETS, WALMART, GIANT, ALDI, & HOME DEPOT



The information and images contained herein are from sources deemed reliable. However, Metro Commercial Real Estate, Inc. makes no representation whatsoever as to their accuracy or authenticity. Images shown may be modified for illustrative purposes. Images may be out-of-date and not current. 12.03.24

LEBANON, PA
1651 EAST CUMBERLAND STREET



www.metrocommercial.com

PAD SITES IN FRONT OF AND ADJACENT TO TOP GROCER IN MARKET



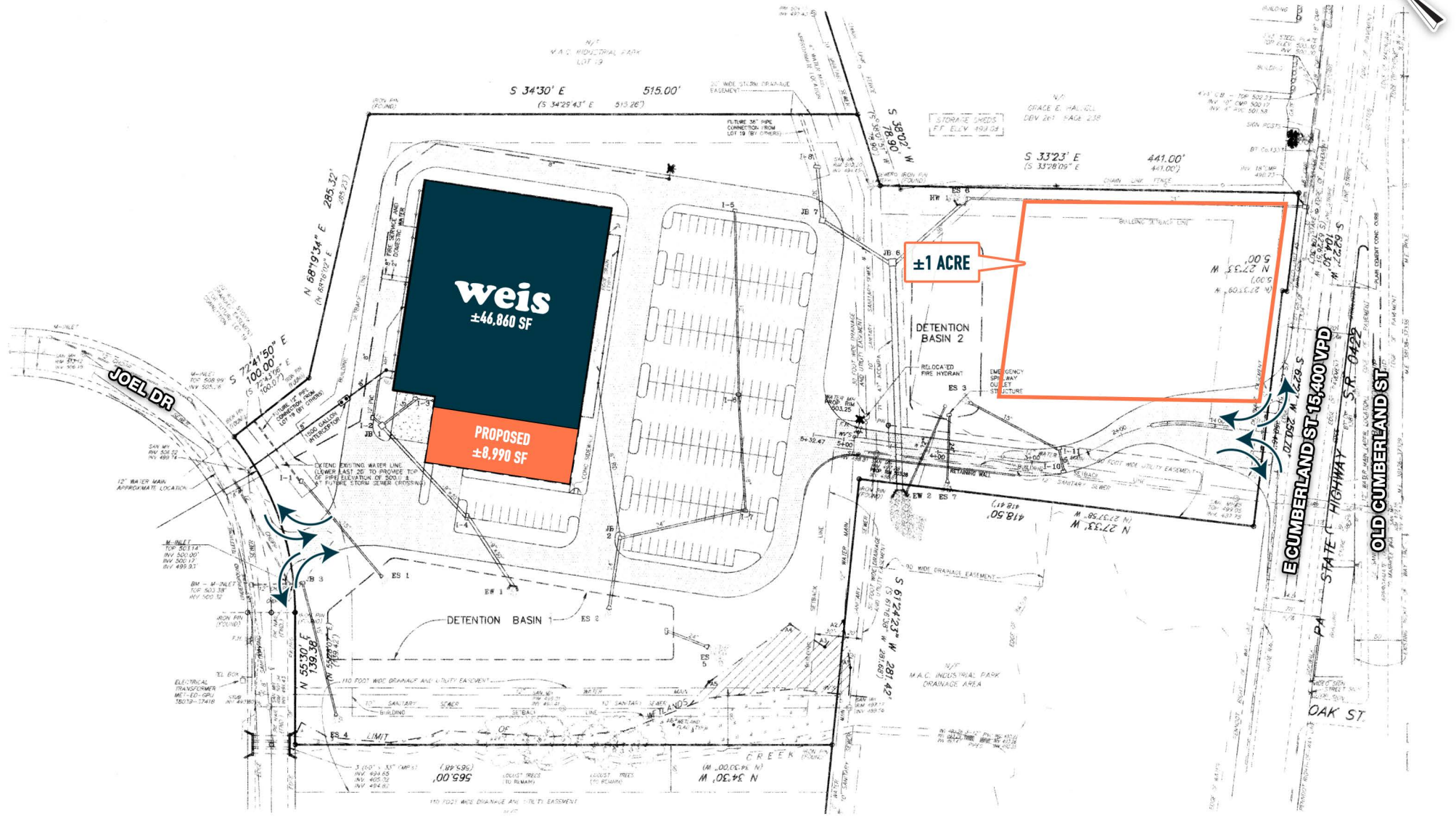
The information and images contained herein are from sources deemed reliable. However, Metro Commercial Real Estate, Inc. makes no representation whatsoever as to their accuracy or authenticity. Images shown may be modified for illustrative purposes. Images may be out-of-date and not current. 12.3.24

LEBANON, PA
1651 EAST CUMBERLAND STREET



www.metrocommercial.com

PADS READY TO BE DEVELOPED!



The information and images contained herein are from sources deemed reliable. However, Metro Commercial Real Estate, Inc. makes no representation whatsoever as to their accuracy or authenticity. Images shown may be modified for illustrative purposes. Images may be out-of-date and not current. 12.03.24

LEBANON, PA
1651 EAST CUMBERLAND STREET



www.metrocommercial.com