

# HANOVER, PA

880 CARLISLE STREET

±5,250 SF ENDCAP WITH DRIVE-THRU AVAILABLE FOR LEASE

PHILADELPHIA MSA

AREA RETAILERS



ADJACENT TO WEIS ANCHORED SHOPPING CENTER



LEASED BY:



**METRO**<sup>®</sup>  
COMMERCIAL  
REAL ESTATE, INC.

OWNED & MANAGED BY:



get in touch.

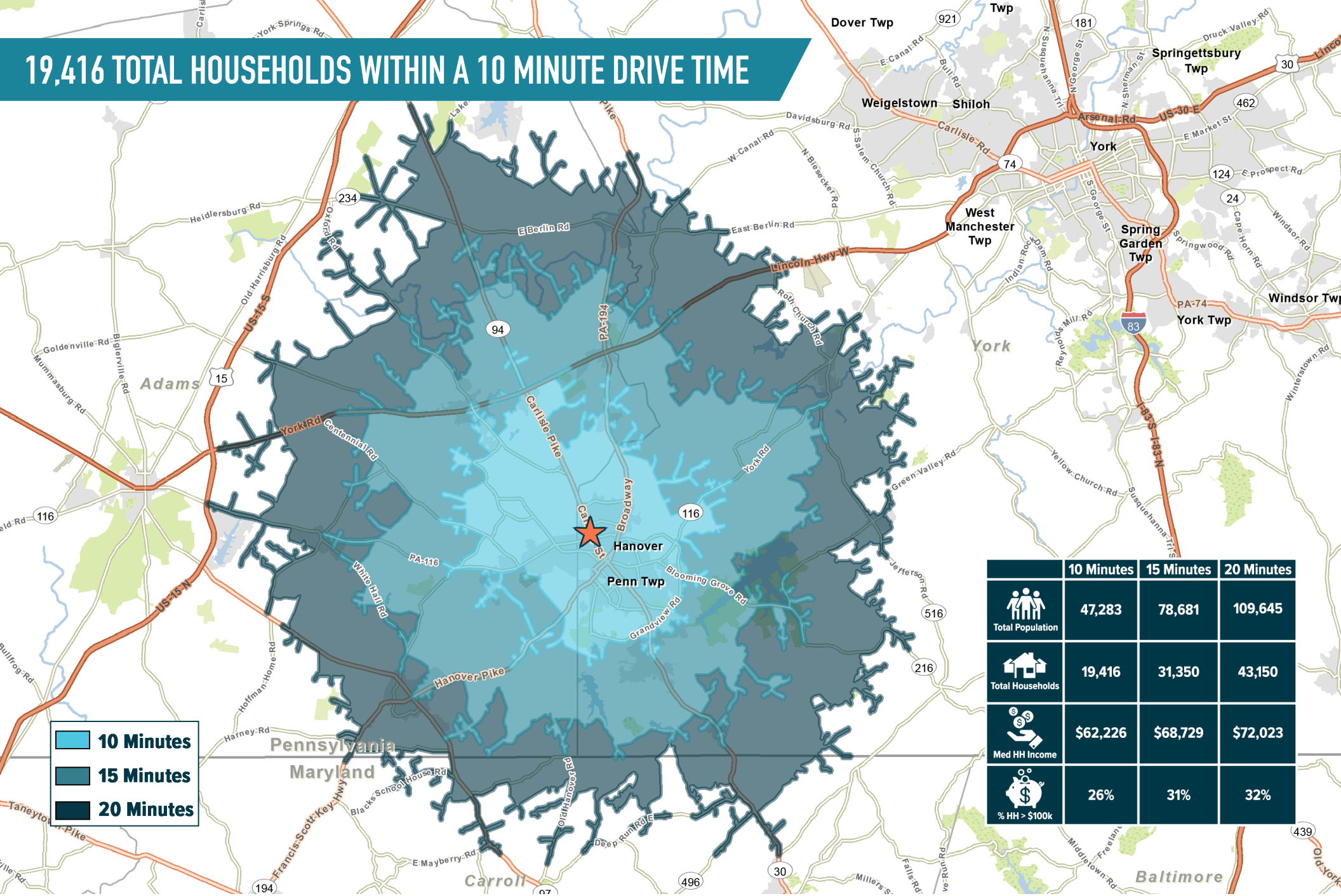
**BRENDAN MULLIGAN**

office 610.825.5222

direct 610.260.2688

[bmulligan@metrocommercial.com](mailto:bmulligan@metrocommercial.com)

# 19,416 TOTAL HOUSEHOLDS WITHIN A 10 MINUTE DRIVE TIME



The information and images contained herein are from sources deemed reliable. However, Metro Commercial Real Estate, Inc. makes no representation whatsoever as to their accuracy or authenticity. Images shown may be modified for illustrative purposes. Images may be out-of-date and not current. 12.13.23

**HANOVER, PA**  
880 CARLISLE STREET



MetroCommercial.com



**GATEWAY HANOVER SHOPPING CENTER**

**TARGET**

**PET SMART**

**ROSS FIVE BELOW**

**HOBBY LOBBY**

**Fulton Bank**

**LOWE'S**

**KOHL'S**

**petco**

**Staples**

**DOLLAR TREE**

**NORTH HANOVER MALL**

**Burlington**

**BAM!**

**sears**

**Hallmark**

**HANOVER CROSSING SHOPPING CENTER**

**Walmart SUPERCENTER**

**Giant**

**TJ-maxx**

**HomeGoods**

**PNC**

**NORTH POINT PLAZA**

**BIG LOTS**

**TRACTOR SUPPLY CO**

**JO-ANN**  
 fabric and craft stores

**SITE**

**weis**

**Giant**

**DOLLAR TREE**

**Advance Auto Parts**

**weis**

**RITE AID**

**Walmart SUPERCENTER**

**PNC**

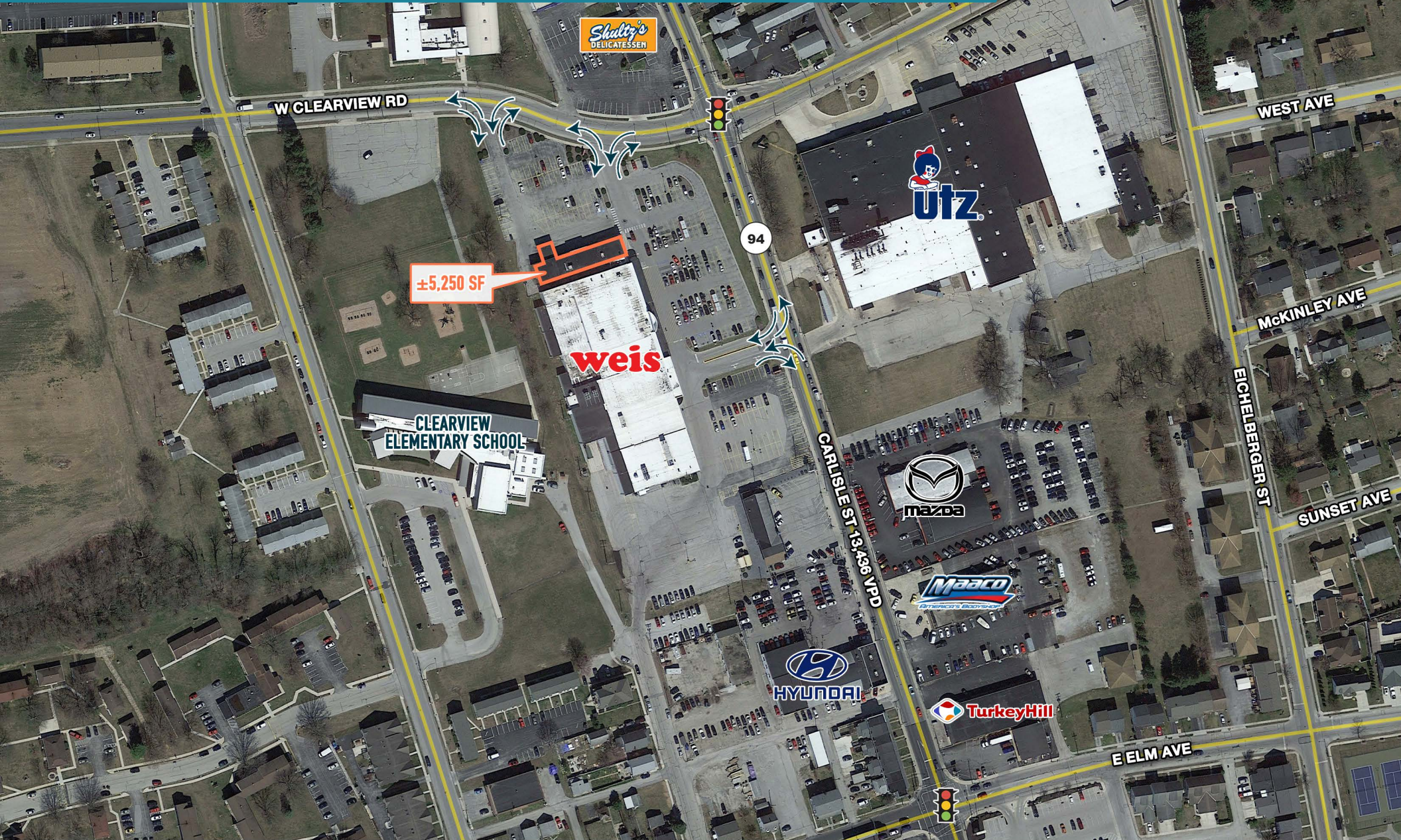
The information and images contained herein are from sources deemed reliable. However, Metro Commercial Real Estate, Inc. makes no representation whatsoever as to their accuracy or authenticity. Images shown may be modified for illustrative purposes. Images may be out-of-date and not current. 12.13.23

**HANOVER, PA**  
880 CARLISLE STREET



MetroCommercial.com

# GREAT VISIBILITY OFF CARLISLE ST (13,436 VPD) WITH CONVENIENT ACCESS



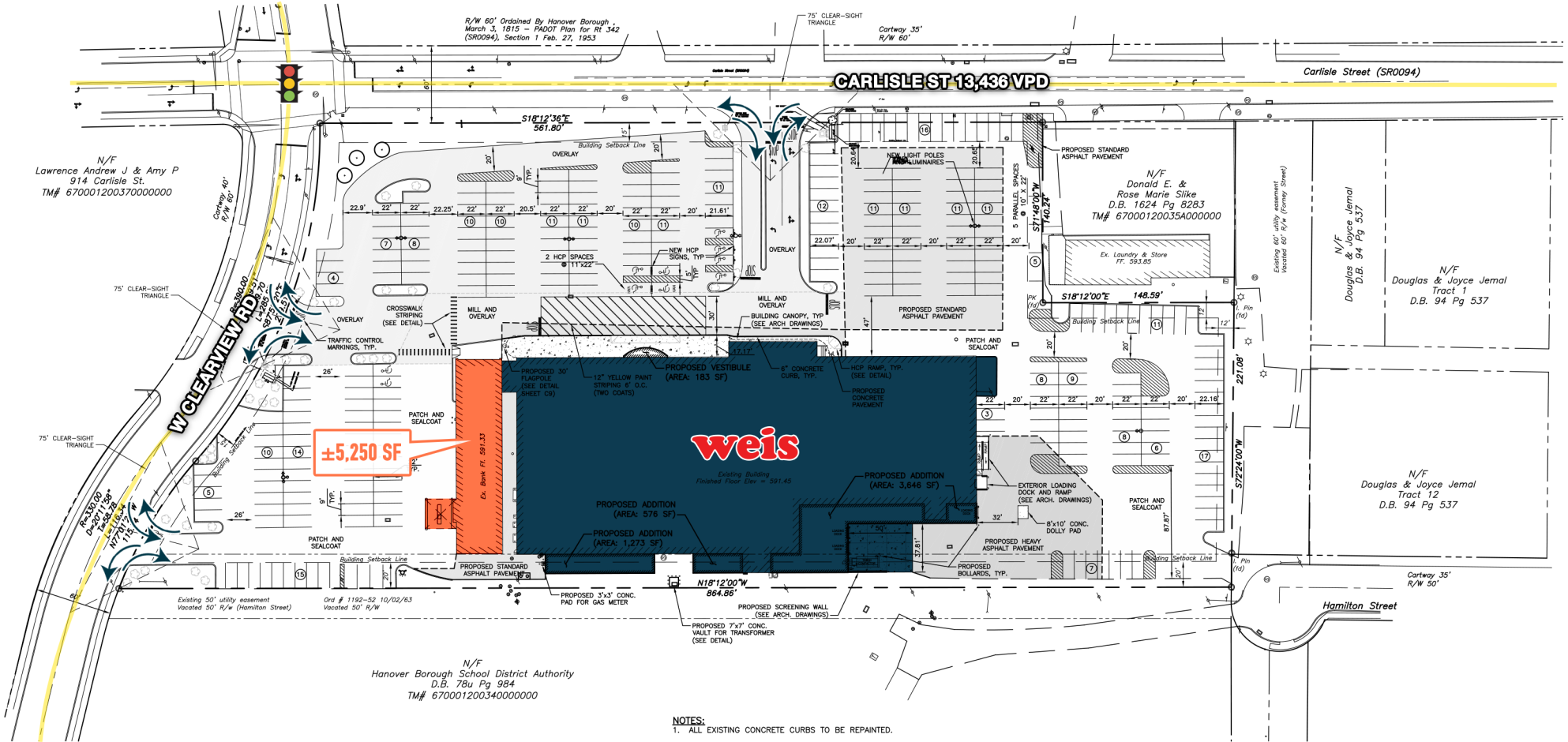
The information and images contained herein are from sources deemed reliable. However, Metro Commercial Real Estate, Inc. makes no representation whatsoever as to their accuracy or authenticity. Images shown may be modified for illustrative purposes. Images may be out-of-date and not current. 8.20.20

**HANOVER, PA**  
880 CARLISLE STREET



MetroCommercial.com

# ENDCAP BANK SPACE (5,250 SF) AVAILABLE FOR LEASE



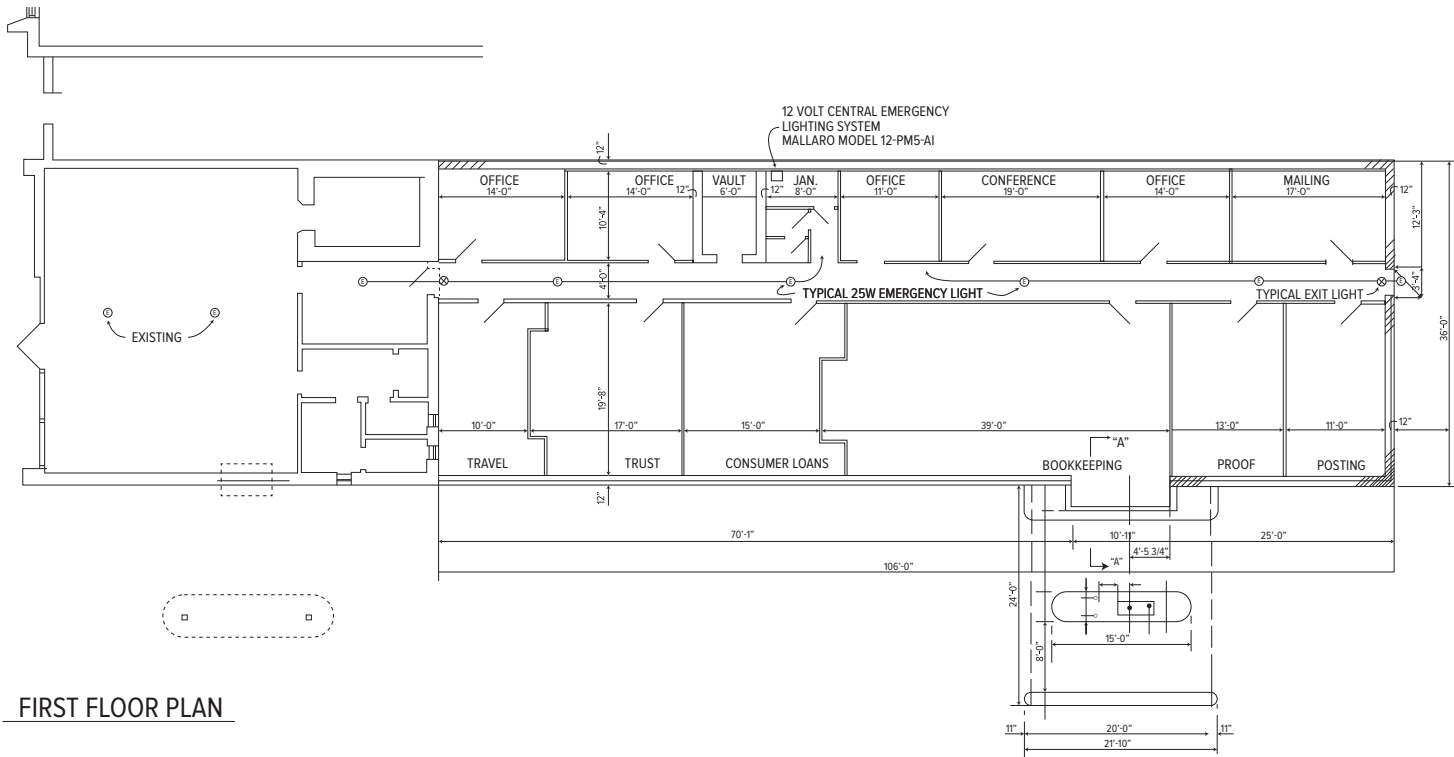
NOTES:  
 1. ALL EXISTING CONCRETE CURBS TO BE REPAINTED.

The information and images contained herein are from sources deemed reliable. However, Metro Commercial Real Estate, Inc. makes no representation whatsoever as to their accuracy or authenticity. Images shown may be modified for illustrative purposes. Images may be out-of-date and not current. 12.13.23

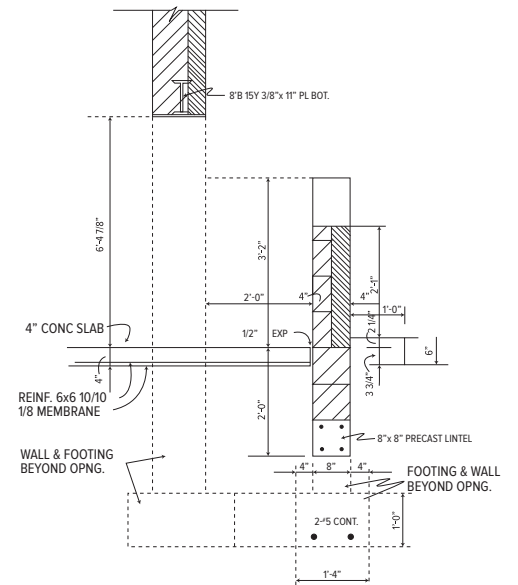
**HANOVER, PA**  
 880 CARLISLE STREET



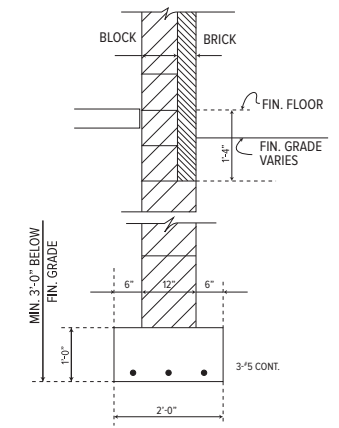
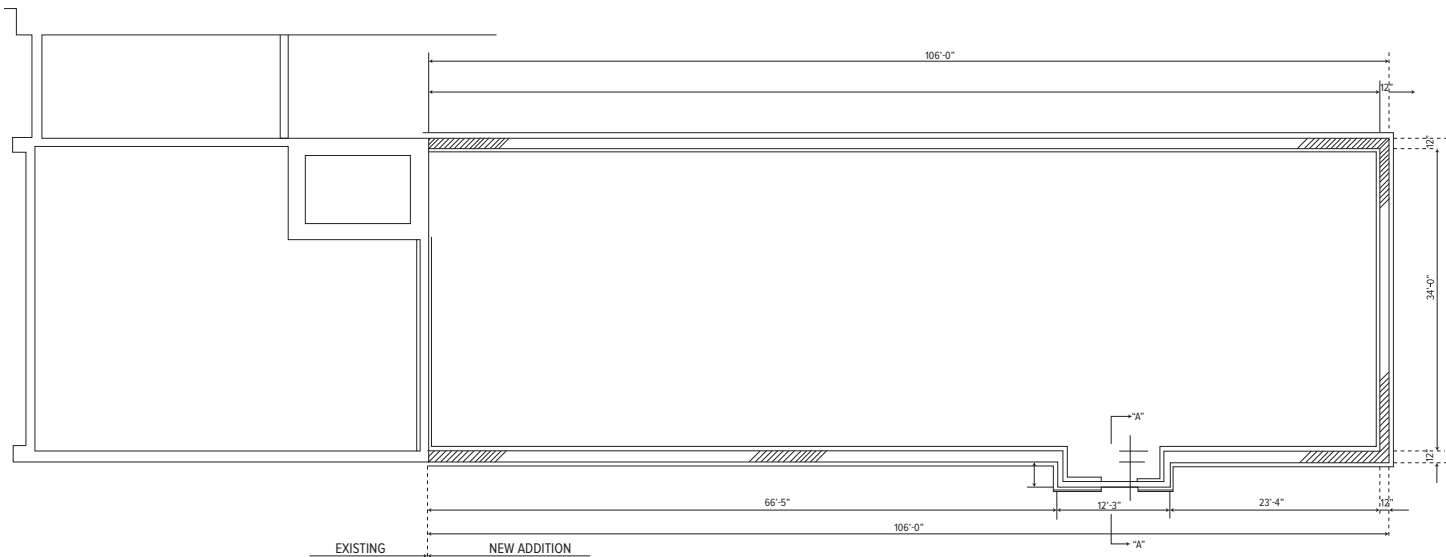
MetroCommercial.com



FIRST FLOOR PLAN



SECTION "A" - "A"



TYPICAL WALL FOOTING

The information and images contained herein are from sources deemed reliable. However, Metro Commercial Real Estate, Inc. makes no representation whatsoever as to their accuracy or authenticity. Images shown may be modified for illustrative purposes. Images may be out-of-date and not current. 12.13.23