

# MIDWAY SHOPPING CENTER WYOMING, PA

1026 WYOMING AVENUE

±4,567- 4,810 SF ENDCAP AVAILABLE FOR LEASE

SCRANTON-WILKES-BARRE MSA



LOCATED ±5 MILES NORTH OF WILKES-BARRE, PA



MetroCommercial.com | PLYMOUTH MEETING, PA | MOUNT LAUREL, NJ | MIAMI, FL | PHILADELPHIA, PA

get in touch.

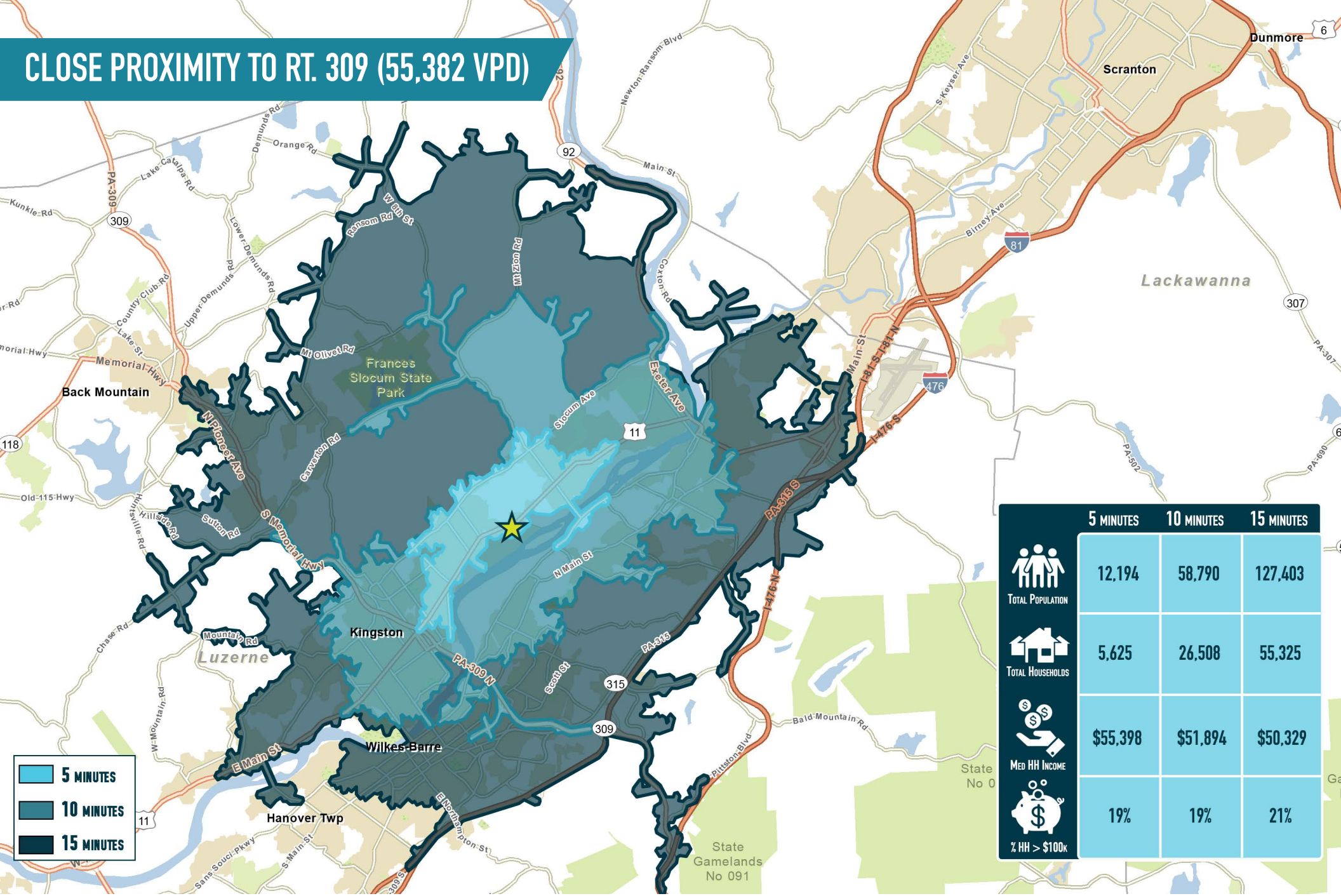
**PAT GALLAGHER**

office 610.825.5222  
direct 610.260.2676  
pgallagher@metrocommercial.com

**LUC CHAMPAGNE**

office 610.825.5222  
direct 610.260.2671  
lchampagne@metrocommercial.com

# CLOSE PROXIMITY TO RT. 309 (55,382 VPD)



	5 MINUTES	10 MINUTES	15 MINUTES
TOTAL POPULATION	12,194	58,790	127,403
TOTAL HOUSEHOLDS	5,625	26,508	55,325
MED HH INCOME	\$55,398	\$51,894	\$50,329
% HH > \$100K	19%	19%	21%

The information and images contained herein are from sources deemed reliable. However, Metro Commercial Real Estate, Inc. makes no representation whatsoever as to their accuracy or authenticity. Images shown may be modified for illustrative purposes. Images may be out-of-date and not current. 03.03.25

**MIDWAY SHOPPING CENTER**  
**WYOMING, PA**  
 1026 WYOMING AVENUE



[www.metrocommercial.com](http://www.metrocommercial.com)

# ADJACENT TO WILKES-BARRE WYOMING VALLEY AIRPORT



The information and images contained herein are from sources deemed reliable. However, Metro Commercial Real Estate, Inc. makes no representation whatsoever as to their accuracy or authenticity. Images shown may be modified for illustrative purposes. Images may be out-of-date and not current. 03.03.25

**MIDWAY SHOPPING CENTER**  
**WYOMING, PA**  
1026 WYOMING AVENUE



[www.metrocommercial.com](http://www.metrocommercial.com)

# SIGNALIZED ACCESS AND VISIBILITY FROM WYOMING AVENUE (17,648 VPD)



The information and images contained herein are from sources deemed reliable. However, Metro Commercial Real Estate, Inc. makes no representation whatsoever as to their accuracy or authenticity. Images shown may be modified for illustrative purposes. Images may be out-of-date and not current. 03.03.25

MIDWAY SHOPPING CENTER  
**WYOMING, PA**  
1026 WYOMING AVENUE



[www.metrocommercial.com](http://www.metrocommercial.com)

GLA: ±236,910 SF



**SITE KEY:**

1	SANDLOT BASEBALL ACADEMY	10,000
2	NOVA TRAMPOLINE PARK	64,000
3	THE UPS STORE	1,600
4	NAIL SALON	1,600
5	HARBOR FREIGHT	20,000
6	RENT-A-CENTER	8,397
7	H&R BLOCK	2,400
8	DOMINO'S PIZZA	2,924
9	M&T BANK	3,900
10	NORTHEAST TITLE & TAG	900
11	PHYSICAL THERAPIST	3,200
12	HONG KONG RESTAURANT	2,000
13	EMPANADA KING	1,900
14	ANYTIME FITNESS	6,150
16	B POSTIVE	3,633
17	DOLLAR TREE	9,750
18	PRICE CHOPPER	53,277
21	GREEN DOG BAKERY	4,979
21A	CISNEY INSURANCE	1,515
21B	GREAT CLIPS	1,315
21C	CRYSTAL VISION	1,515
21D	AVAILABLE	4,567
21G	ANGELO'S RESTAURANT	3,800
21J	PA WINE & SPIRITS	3,446
22	SMOKE SHOP	3,000
23	AVAILABLE	4,810
PAD 1	LANDMARK BANK	2,520
NAP	BURGER KING	N/A
PAD 3	CVS	10,125
PAD 4	AUTOZONE	1.3 AC

The information and images contained herein are from sources deemed reliable. However, Metro Commercial Real Estate, Inc. makes no representation whatsoever as to their accuracy or authenticity. Images shown may be modified for illustrative purposes. Images may be out-of-date and not current. 03.03.25

MIDWAY SHOPPING CENTER  
**WYOMING, PA**  
 1026 WYOMING AVENUE



www.metrocommercial.com