

# DOYLESTOWN, PA

635 N MAIN STREET

±3,103 SF AVAILABLE FOR LEASE, SECOND FLOOR

AREA RETAILERS

**GIANT**  
**ACME** **weis**

 **Staples**

VISIBILITY AND ACCESS FROM DOYLESTOWN'S PRIMARY RETAIL CORRIDOR, MAIN STREET (15,083 VPD)



get in touch.

**SAMUEL THIERS**

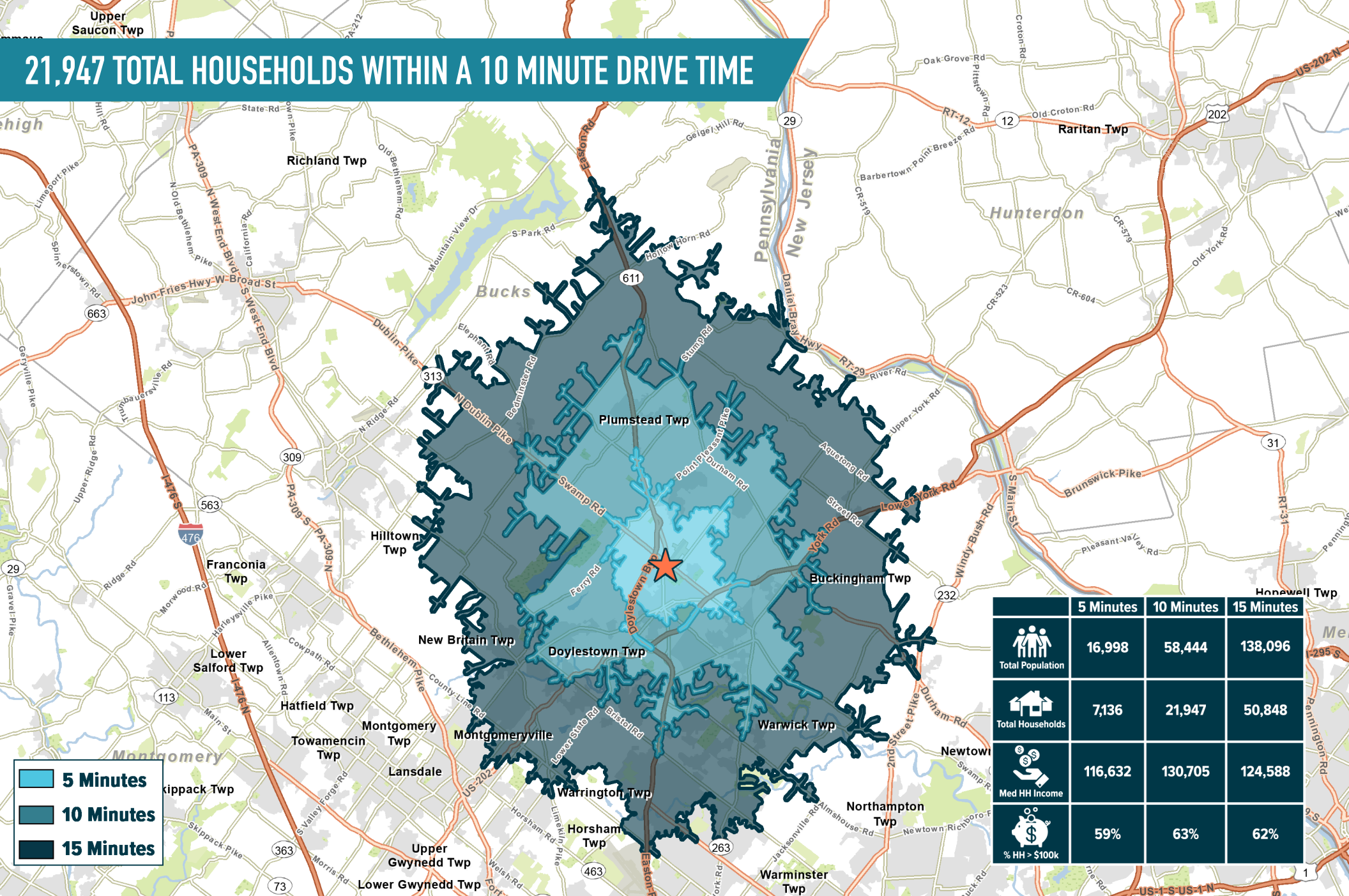
office 610.825.5222

direct 610.260.2665

sthiers@metrocommercial.com



# 21,947 TOTAL HOUSEHOLDS WITHIN A 10 MINUTE DRIVE TIME



■ 5 Minutes  
■ 10 Minutes  
■ 15 Minutes

	5 Minutes	10 Minutes	15 Minutes
Total Population	16,998	58,444	138,096
Total Households	7,136	21,947	50,848
Med HH Income	116,632	130,705	124,588
% HH > \$100k	59%	63%	62%

The information and images contained herein are from sources deemed reliable. However, Metro Commercial Real Estate, Inc. makes no representation whatsoever as to their accuracy or authenticity. Images shown may be modified for illustrative purposes. Images may be out-of-date and not current. 12.20.23

**DOYLESTOWN, PA**  
635 N MAIN STREET



MetroCommercial.com

# MARKET AERIAL



The information and images contained herein are from sources deemed reliable. However, Metro Commercial Real Estate, Inc. makes no representation whatsoever as to their accuracy or authenticity. Images shown may be modified for illustrative purposes. Images may be out-of-date and not current. 12:20:23

**DOYLESTOWN, PA**  
 635 N MAIN STREET



MetroCommercial.com

AMPLE PARKING



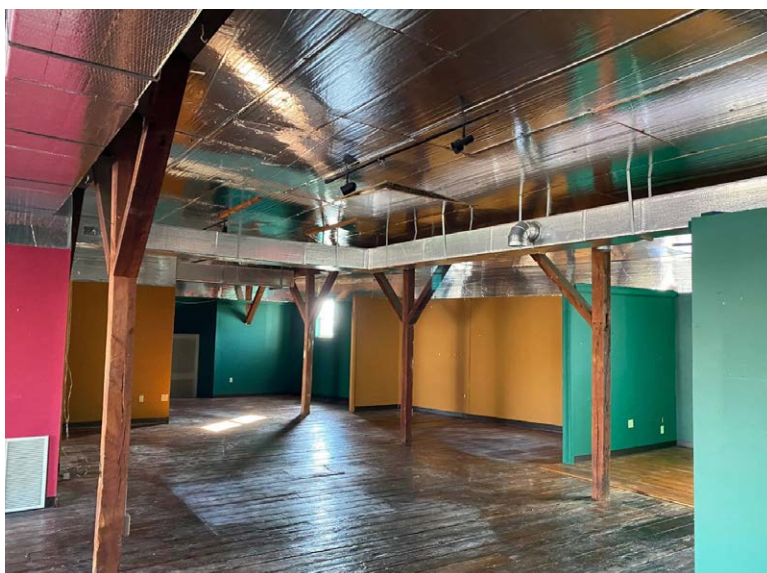
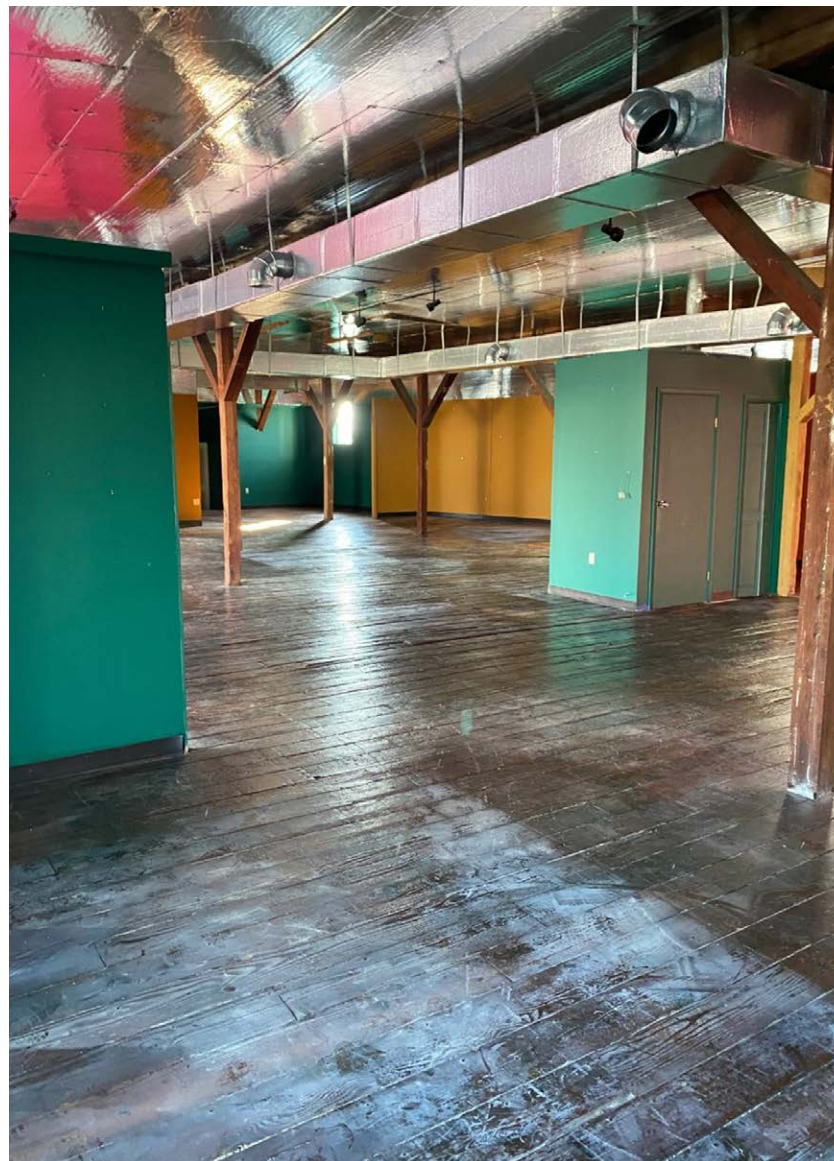
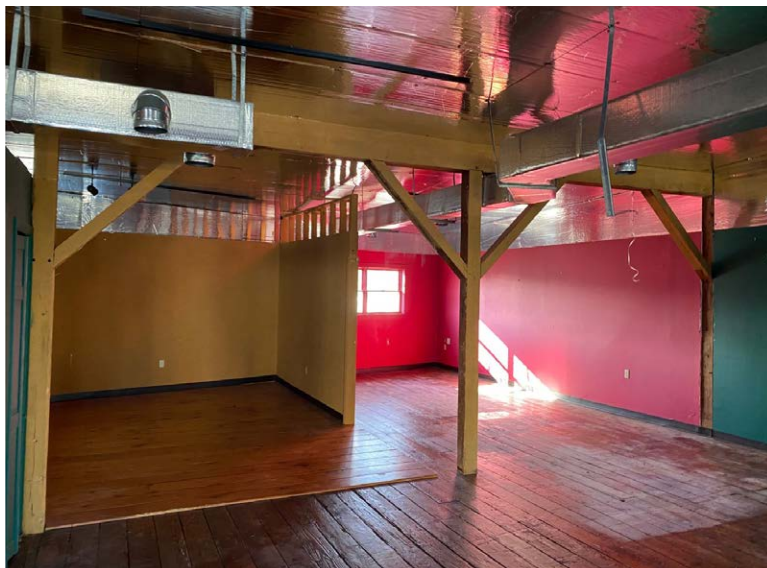
The information and images contained herein are from sources deemed reliable. However, Metro Commercial Real Estate, Inc. makes no representation whatsoever as to their accuracy or authenticity. Images shown may be modified for illustrative purposes. Images may be out-of-date and not current. 1.2.20

**DOYLESTOWN, PA**  
635 N MAIN STREET



MetroCommercial.com

# PROPERTY PHOTOS



The information and images contained herein are from sources deemed reliable. However, Metro Commercial Real Estate, Inc. makes no representation whatsoever as to their accuracy or authenticity. Images shown may be modified for illustrative purposes. Images may be out-of-date and not current. 12.20.23

**DOYLESTOWN, PA**  
635 N MAIN STREET



MetroCommercial.com