

# UNION CENTER WILKES-BARRE TOWNSHIP, PA

910 WILKES-BARRE TOWNSHIP BLVD

±3,679- 31,518 SF & PAD OPPORTUNITY AVAILABLE

JOIN



UNDER CONSTRUCTION



REDEVELOPMENT UNDERWAY!



get in touch.



**METRO**<sup>®</sup>  
COMMERCIAL  
REAL ESTATE, INC.

MetroCommercial.com | PLYMOUTH MEETING, PA | MOUNT LAUREL, NJ | MIAMI, FL | PHILADELPHIA, PA

**PAT GALLAGHER**

office 610.825.5222  
direct 610.260.2676  
pgallagher@metrocommercial.com

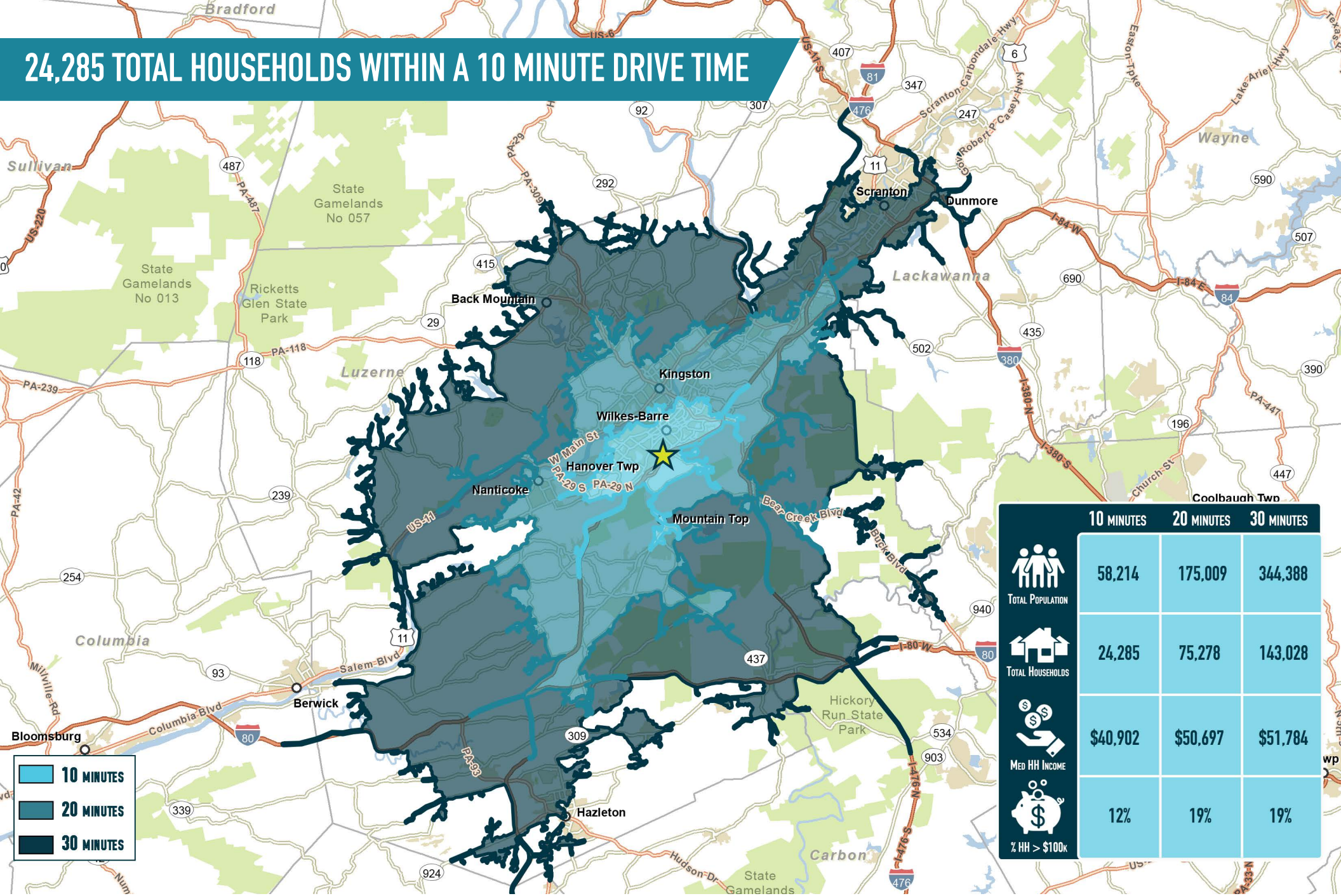
**BRIAN GOODWIN**

office 610.825.5222  
direct 610.260.2664  
bgoodwin@metrocommercial.com

**SAMUEL THIERS**

office 610.825.5222  
direct 610.260.2673  
sthiers@metrocommercial.com

# 24,285 TOTAL HOUSEHOLDS WITHIN A 10 MINUTE DRIVE TIME



	10 MINUTES	20 MINUTES	30 MINUTES
TOTAL POPULATION	58,214	175,009	344,388
TOTAL HOUSEHOLDS	24,285	75,278	143,028
MED HH INCOME	\$40,902	\$50,697	\$51,784
% HH > \$100k	12%	19%	19%

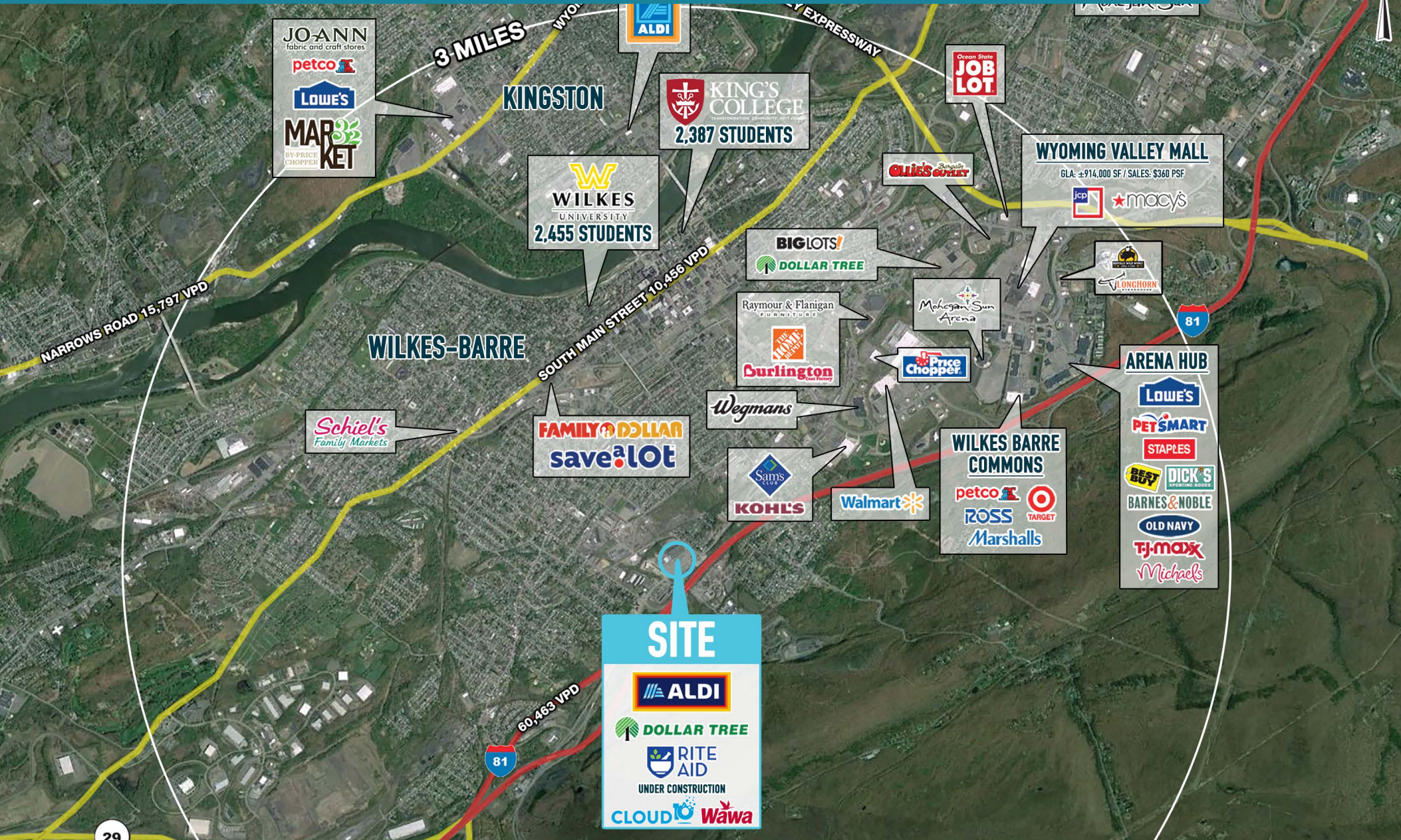
The information and images contained herein are from sources deemed reliable. However, Metro Commercial Real Estate, Inc. makes no representation whatsoever as to their accuracy or authenticity. Images shown may be modified for illustrative purposes. Images may be out-of-date and not current. 11.14.24

UNION CENTER  
**WILKES-BARRE TOWNSHIP, PA**  
 910 WILKES-BARRE TOWNSHIP BLVD



[www.metrocommercial.com](http://www.metrocommercial.com)

# CLOSE PROXIMITY TO DOWNTOWN WILKES-BARRE, WILKES UNIVERSITY AND KINGS COLLEGE



The information and images contained herein are from sources deemed reliable. However, Metro Commercial Real Estate, Inc. makes no representation whatsoever as to their accuracy or authenticity. Images shown may be modified for illustrative purposes. Images may be out-of-date and not current. 11.14.24

UNION CENTER  
**WILKES-BARRE TOWNSHIP, PA**  
 910 WILKES-BARRE TOWNSHIP BLVD



www.metrocommercial.com

# UNMATCHED VISIBILITY AND ACCESS FROM RT. 309 (18,960 VPD) AND RT. 81 (60,463 VPD)



The information and images contained herein are from sources deemed reliable. However, Metro Commercial Real Estate, Inc. makes no representation whatsoever as to their accuracy or authenticity. Images shown may be modified for illustrative purposes. Images may be out-of-date and not current. 11.14.24

UNION CENTER  
**WILKES-BARRE TOWNSHIP, PA**  
 910 WILKES-BARRE TOWNSHIP BLVD



[www.metrocommercial.com](http://www.metrocommercial.com)

# IDEAL FOR FITNESS, MEDICAL, HARDWARE, OR ENTERTAINMENT USERS



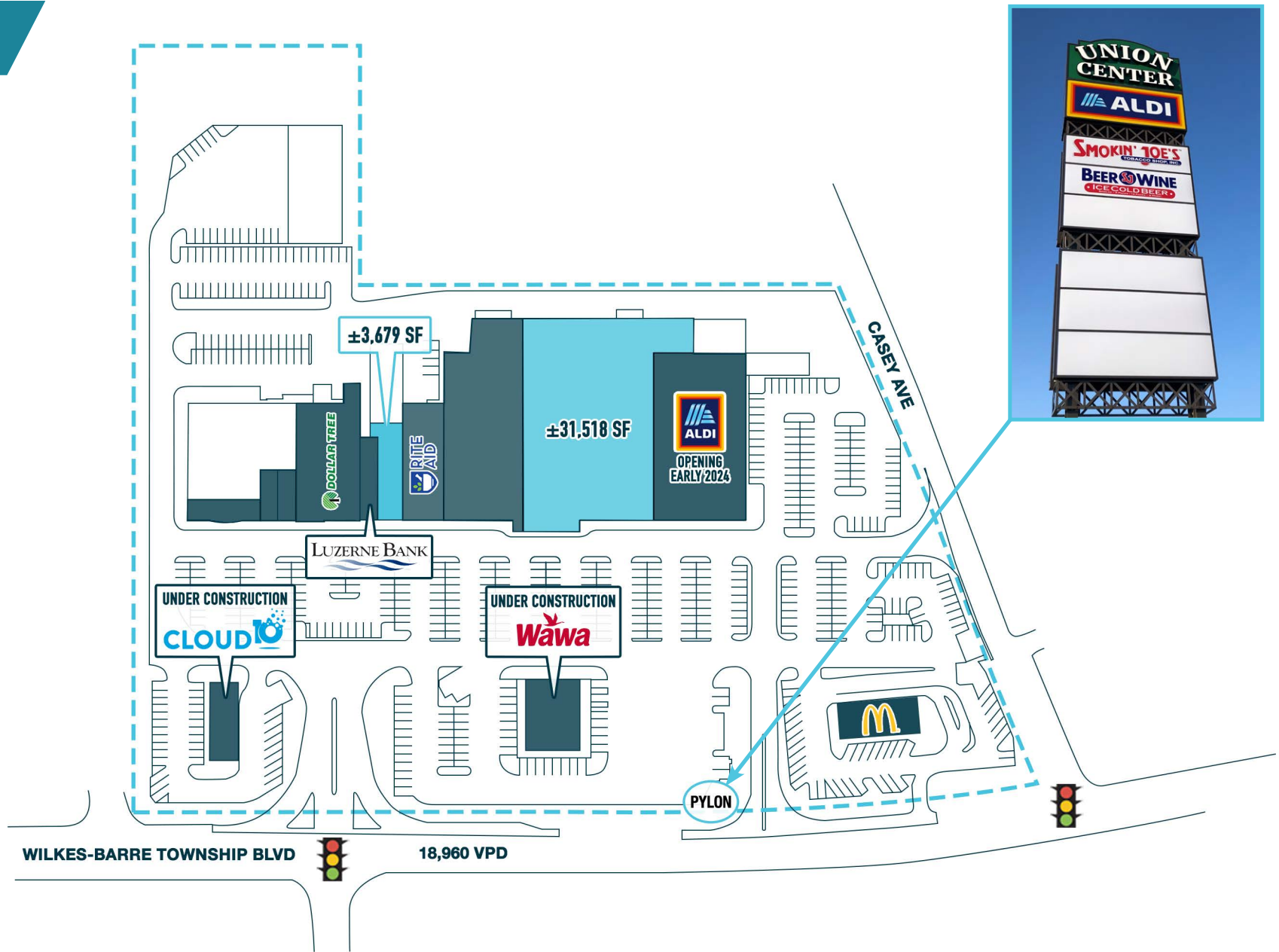
The information and images contained herein are from sources deemed reliable. However, Metro Commercial Real Estate, Inc. makes no representation whatsoever as to their accuracy or authenticity. Images shown may be modified for illustrative purposes. Images may be out-of-date and not current. 11.14.24

UNION CENTER  
**WILKES-BARRE TOWNSHIP, PA**  
910 WILKES-BARRE TOWNSHIP BLVD



[www.metrocommercial.com](http://www.metrocommercial.com)

# SITE PLAN



The information and images contained herein are from sources deemed reliable. However, Metro Commercial Real Estate, Inc. makes no representation whatsoever as to their accuracy or authenticity. Images shown may be modified for illustrative purposes. Images may be out-of-date and not current. 11.14.24

UNION CENTER  
**WILKES-BARRE TOWNSHIP, PA**  
910 WILKES-BARRE TOWNSHIP BLVD



[www.metrocommercial.com](http://www.metrocommercial.com)

# EXISTING RETAIL



The information and images contained herein are from sources deemed reliable. However, Metro Commercial Real Estate, Inc. makes no representation whatsoever as to their accuracy or authenticity. Images shown may be modified for illustrative purposes. Images may be out-of-date and not current. 11.14.24

UNION CENTER  
**WILKES-BARRE TOWNSHIP, PA**  
910 WILKES-BARRE TOWNSHIP BLVD



[www.metrocommercial.com](http://www.metrocommercial.com)