

ROUTE 6 MALL  
**HONESDALE, PA**

650 OLD WILLOW AVENUE

UP TO ±26,867 SF STILL AVAILABLE AS PART OF FORMER K MART REDEVELOPMENT

SCRANTON MSA

JOIN

TJ-maxx DOLLAR TREE

Northeastern Eye Institute HARBOR FREIGHT QUALITY TOOLS LOWEST PRICES AT&T

opening soon  
**HOBBY LOBBY**

**HOBBY LOBBY OPENING SOON!**



LEASED BY:



**METRO**<sup>®</sup>  
COMMERCIAL  
REAL ESTATE, INC.

MetroCommercial.com | PLYMOUTH MEETING, PA | MOUNT LAUREL, NJ | MIAMI, FL | PHILADELPHIA, PA

get in touch.

**PAT GALLAGHER**

office 610.825.5222  
direct 610.260.2676  
pgallagher@metrocommercial.com

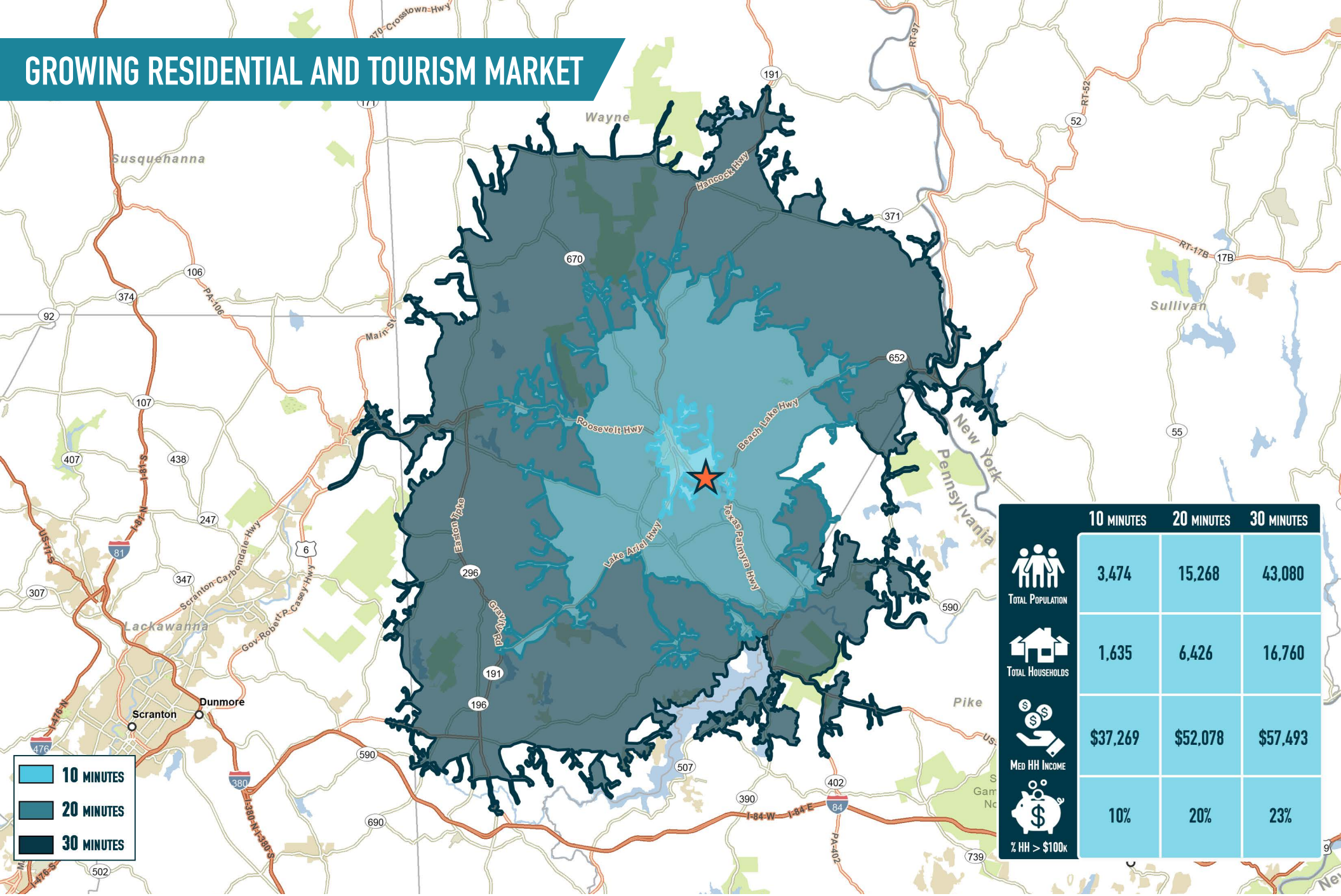
**BRIAN GOODWIN**

office 610.825.5222  
direct 610.260.2664  
bgoodwin@metrocommercial.com

**BRENDAN MULLIGAN**

office 610.825.5222  
direct 610.260.2688  
bmulligan@metrocommercial.com

# GROWING RESIDENTIAL AND TOURISM MARKET



The information and images contained herein are from sources deemed reliable. However, Metro Commercial Real Estate, Inc. makes no representation whatsoever as to their accuracy or authenticity. Images shown may be modified for illustrative purposes. Images may be out-of-date and not current. 07.24.24

ROUTE 6 MALL  
**HONESDALE, PA**  
 650 OLD WILLOW AVENUE



[www.metrocommercial.com](http://www.metrocommercial.com)

# LOCATED IN THE DOMINANT RETAIL CENTER IN A HOTBED NORTHEASTERN PA TOURIST TOWN



The information and images contained herein are from sources deemed reliable. However, Metro Commercial Real Estate, Inc. makes no representation whatsoever as to their accuracy or authenticity. Images shown may be modified for illustrative purposes. Images may be out-of-date and not current. 07:24:24

**ROUTE 6 MALL**  
**HONESDALE, PA**  
 650 OLD WILLOW AVENUE



[www.metrocommercial.com](http://www.metrocommercial.com)

# AREA TENANTS INCLUDE: WALMART, HOME DEPOT, WEIS, AND FINE WINE & GOOD SPIRITS



The information and images contained herein are from sources deemed reliable. However, Metro Commercial Real Estate, Inc. makes no representation whatsoever as to their accuracy or authenticity. Images shown may be modified for illustrative purposes. Images may be out-of-date and not current. 2.02.23

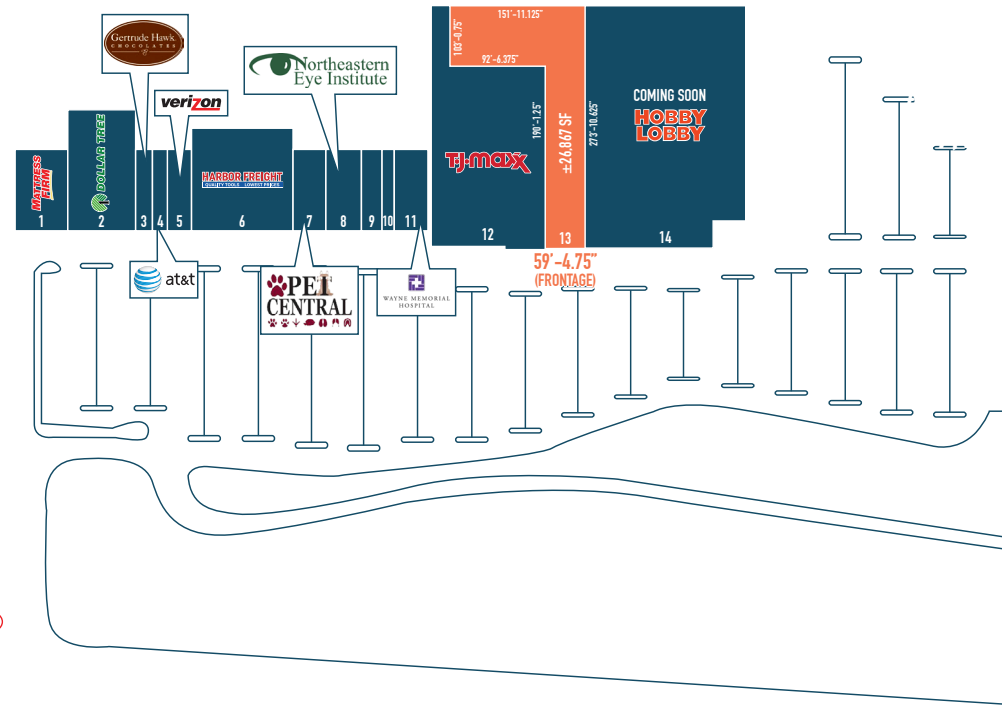
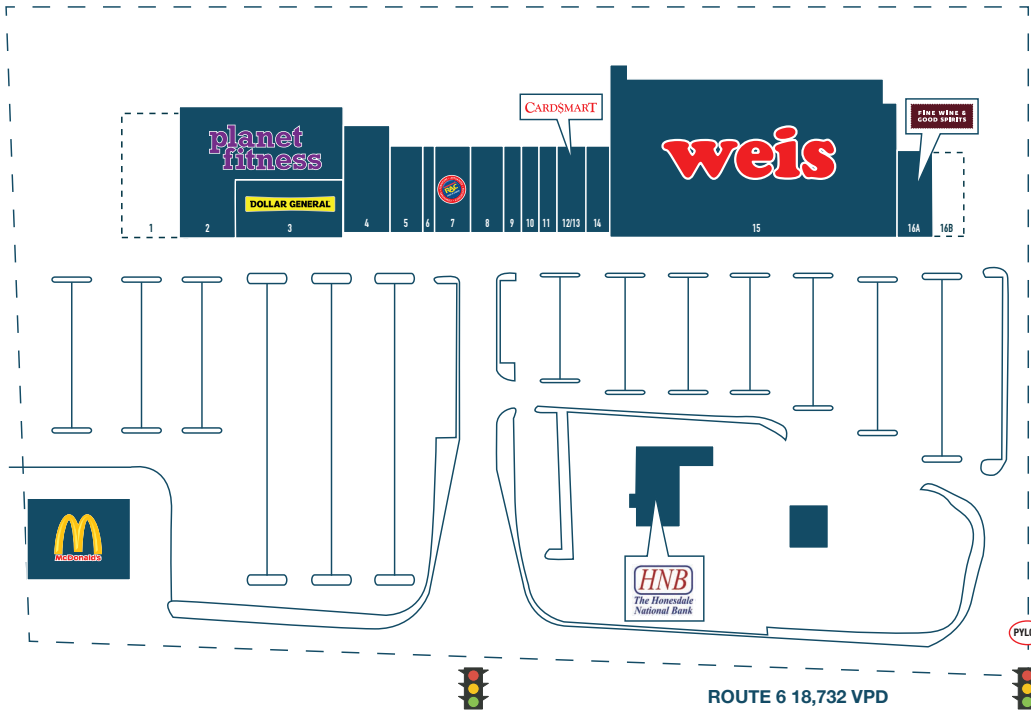
ROUTE 6 MALL  
**HONESDALE, PA**  
650 OLD WILLOW AVENUE



[www.metrocommercial.com](http://www.metrocommercial.com)

# TARGETING DISCOUNT, MEDICAL, APPAREL, OR SALON SUITE TENANT

SEPARATE OWNERSHIP



The information and images contained herein are from sources deemed reliable. However, Metro Commercial Real Estate, Inc. makes no representation whatsoever as to their accuracy or authenticity. Images shown may be modified for illustrative purposes. Images may be out-of-date and not current. 07.24.24

ROUTE 6 MALL  
**HONESDALE, PA**  
 650 OLD WILLOW AVENUE



[www.metrocommercial.com](http://www.metrocommercial.com)