

BLOOMSBURG PLAZA  
**BLOOMSBURG, PA**

ROUTE 11 & CENTRAL ROAD

±3,000 - 7,285 SF AVAILABLE FOR LEASE; GLA: ±126,742 SF

PHILADELPHIA MSA

JOIN



**HIGHLY VISIBLE JUNIOR ANCHOR AND SMALL SHOP RETAIL SPACE AVAILABLE FOR LEASE**



MetroCommercial.com | PLYMOUTH MEETING, PA | MOUNT LAUREL, NJ | MIAMI, FL

**get in touch.**

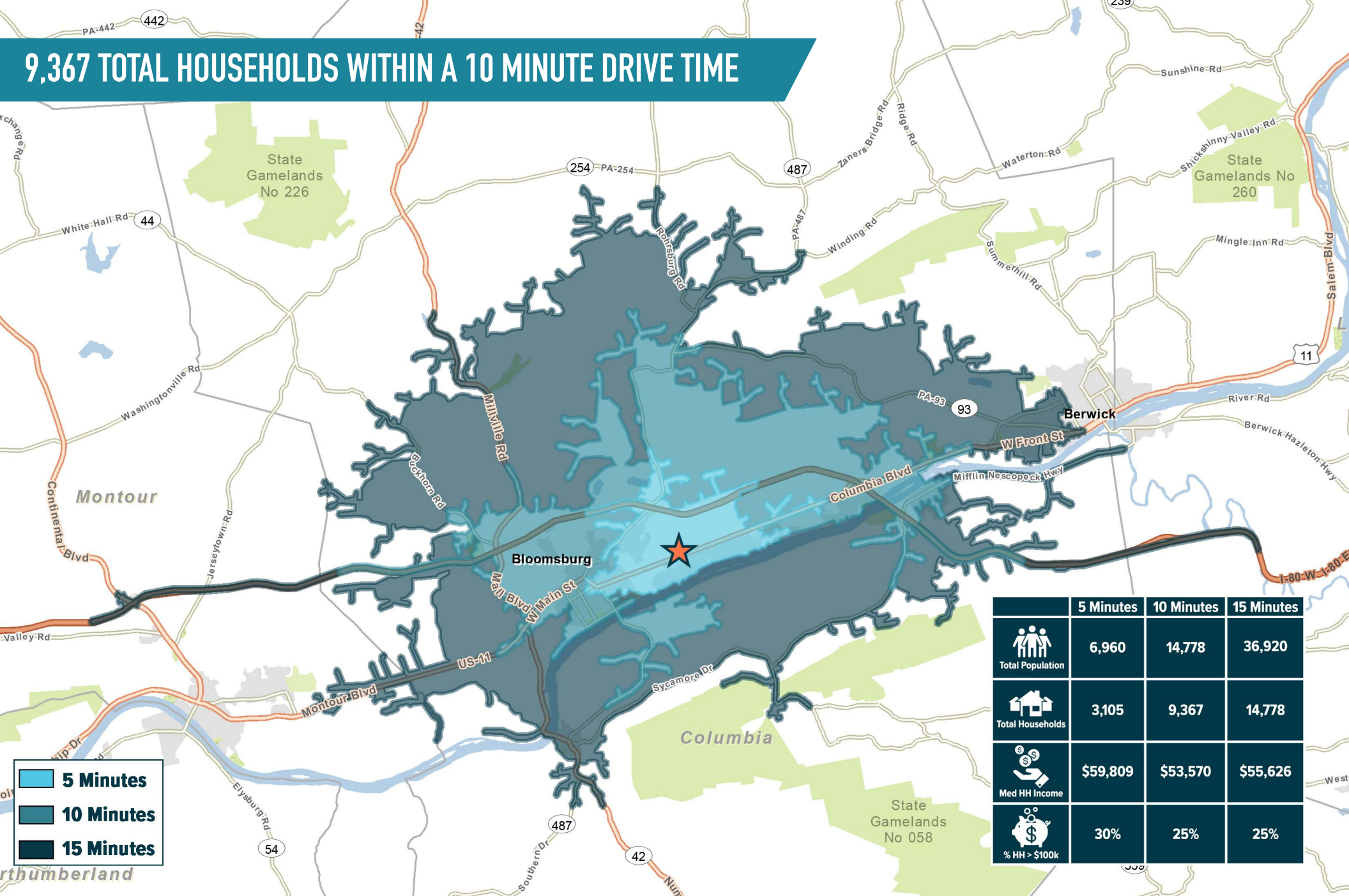
**PAT GALLAGHER**

office 610.825.5222  
direct 610.260.2676  
pgallagher@metrocommercial.com

**SAMUEL THIERS**

office 610.825.5222  
direct 610.260.2665  
sthiers@metrocommercial.com

# 9,367 TOTAL HOUSEHOLDS WITHIN A 10 MINUTE DRIVE TIME



	5 Minutes	10 Minutes	15 Minutes
Total Population	6,960	14,778	36,920
Total Households	3,105	9,367	14,778
Med HH Income	\$59,809	\$53,570	\$55,626
% HH > \$100k	30%	25%	25%

The information and images contained herein are from sources deemed reliable. However, Metro Commercial Real Estate, Inc. makes no representation whatsoever as to their accuracy or authenticity. Images shown may be modified for illustrative purposes. Images may be out-of-date and not current. 08.05.24

**BLOOMSBURG PLAZA**  
**BLOOMSBURG, PA**  
 ROUTE 11 & CENTRAL ROAD



MetroCommercial.com

# SITUATED ON MAIN COMMERCIAL/RETAIL CORRIDOR



The information and images contained herein are from sources deemed reliable. However, Metro Commercial Real Estate, Inc. makes no representation whatsoever as to their accuracy or authenticity. Images shown may be modified for illustrative purposes. Images may be out-of-date and not current. 06.05.24

BLOOMSBURG PLAZA  
**BLOOMSBURG, PA**  
ROUTE 11 & CENTRAL ROAD



MetroCommercial.com

LOCATED DIRECTLY ON ROUTE 11 (COLUMBIA BLVD) ON BLOOMSBURG'S MAIN ARTERY INTO TOWN



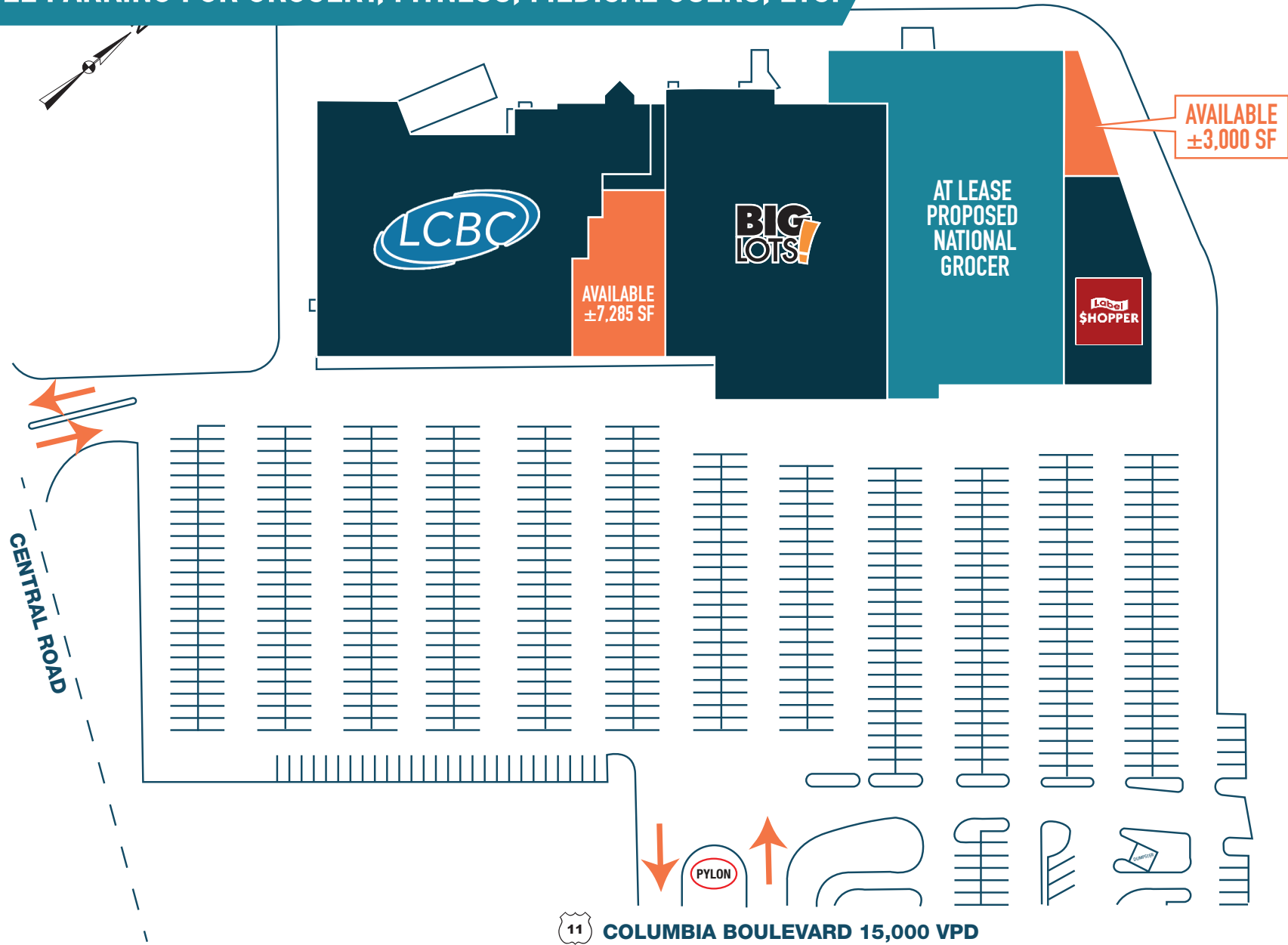
The information and images contained herein are from sources deemed reliable. However, Metro Commercial Real Estate, Inc. makes no representation whatsoever as to their accuracy or authenticity. Images shown may be modified for illustrative purposes. Images may be out-of-date and not current. 08.05.24

BLOOMSBURG PLAZA  
**BLOOMSBURG, PA**  
ROUTE 11 & CENTRAL ROAD



MetroCommercial.com

# AMPLE PARKING FOR GROCERY, FITNESS, MEDICAL USERS, ETC.



The information and images contained herein are from sources deemed reliable. However, Metro Commercial Real Estate, Inc. makes no representation whatsoever as to their accuracy or authenticity. Images shown may be modified for illustrative purposes. Images may be out-of-date and not current. 08.05.24

BLOOMSBURG PLAZA  
**BLOOMSBURG, PA**  
ROUTE 11 & CENTRAL ROAD



MetroCommercial.com

# PROPERTY PHOTOS



The information and images contained herein are from sources deemed reliable. However, Metro Commercial Real Estate, Inc. makes no representation whatsoever as to their accuracy or authenticity. Images shown may be modified for illustrative purposes. Images may be out-of-date and not current. 08.05.24

BLOOMSBURG PLAZA  
**BLOOMSBURG, PA**  
ROUTE 11 & CENTRAL ROAD



MetroCommercial.com