

SUMMIT CROSSING  
**GLEN MILLS, PA**

ROUTE 202 & SUMMIT STREET

PAD SITE AND ±1,400 SF – 2,800 SF INLINE AVAILABLE FOR LEASE; GLA: ±23,663 SF

JOIN



**IDEAL FOR RESTAURANT, FITNESS, OR MEDICAL**



**METRO**<sup>®</sup>  
COMMERCIAL  
REAL ESTATE, INC.

MetroCommercial.com | PLYMOUTH MEETING, PA | MOUNT LAUREL, NJ | MIAMI, FL | PHILADELPHIA, PA

**get in touch.**

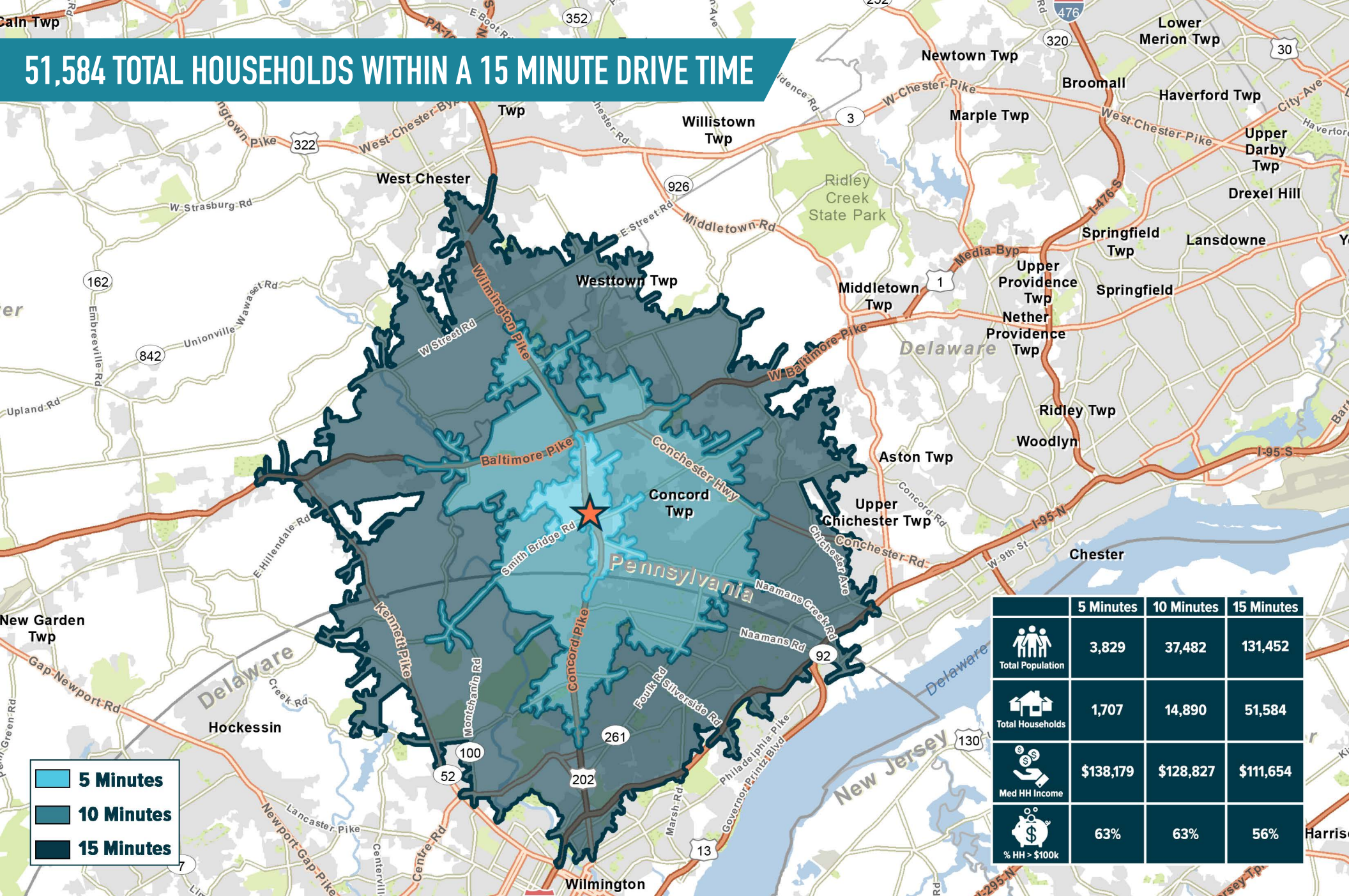
**BRIAN GOODWIN**

office 610.825.5222  
direct 610.260.2664  
bgoodwin@metrocommercial.com





**BRENDAN MULLIGAN**

office 610.825.5222  
direct 610.260.2688  
bmulligan@metrocommercial.com

# 51,584 TOTAL HOUSEHOLDS WITHIN A 15 MINUTE DRIVE TIME



- 5 Minutes
- 10 Minutes
- 15 Minutes

	5 Minutes	10 Minutes	15 Minutes
 Total Population	3,829	37,482	131,452
 Total Households	1,707	14,890	51,584
 Med HH Income	\$138,179	\$128,827	\$111,654
 % HH > \$100k	63%	63%	56%

The information and images contained herein are from sources deemed reliable. However, Metro Commercial Real Estate, Inc. makes no representation whatsoever as to their accuracy or authenticity. Images shown may be modified for illustrative purposes. Images may be out-of-date and not current. 07.31.23

SUMMIT CROSSING  
**GLEN MILLS, PA**  
 ROUTE 202 & SUMMIT STREET



**SHOPPES AT BRINTON LAKE**

J.CREW  
TALBOTS  
ANTHROPOLOGIE  
VICTORIA'S SECRET  
CHICO'S  
PF. CHANG'S  
LOFT  
Eddie Bauer  
WILLIAMS-SONOMA, INC.  
POTTERY BARN

**REGIONAL HEADQUARTERS**

**Costco WHOLESALE**

**chj's**

**Main Line Health**  
3 - STORY  
131,000 SF

**CVS pharmacy**

**Bank of America**

**Wawa**

**PAINTERS CROSSING SHOPPING CENTER**

AMC THEATRES  
CARRABBA'S ITALIAN GRILL  
WELLS FARGO  
Friendly's

**McDonald's**

**Fulton Bank**

**BRANDYWINE MILLS SHOPPING CENTER**

Wegmans  
Starbucks  
ZOE'S KITCHEN  
at&t  
the Vitamin Shoppe  
Migo & Savino

**CONCORDVILLE MARKETPLACE**

Target  
PETSMART  
Marshalls  
ACME DSW

**KEYSTONE PLAZA**

UBREAKIFIX

**PNC**

**GLEN EAGLE SQUARE SHOPPING CENTER**

WHOLEFOODS  
GAP  
FSA BANK  
STARBUCKS  
BANANA REPUBLIC  
AMERICAN EAGLE OUTFITTERS  
ANN TAYLOR  
HARVEST

**OLDE RIDGE VILLAGE SHOPPES**

**BRANDYWINE RACQUET & TENNIS CLUB**

**SITE**

**SUMMIT CROSSING**

SportClips  
WSFS bank  
UPS

The information and images contained herein are from sources deemed reliable. However, Metro Commercial Real Estate, Inc. makes no representation whatsoever as to their accuracy or authenticity. Images shown may be modified for illustrative purposes. Images may be out-of-date and not current. 07:31:23

**SUMMIT CROSSING**  
**GLEN MILLS, PA**  
ROUTE 202 & SUMMIT STREET



MetroCommercial.com

# TWO NEW APPROVED TRAFFIC SIGNALS AND BUILDING SIGNAGE ON NORTHBOUND AND SOUTHBOUND ROUTE 202



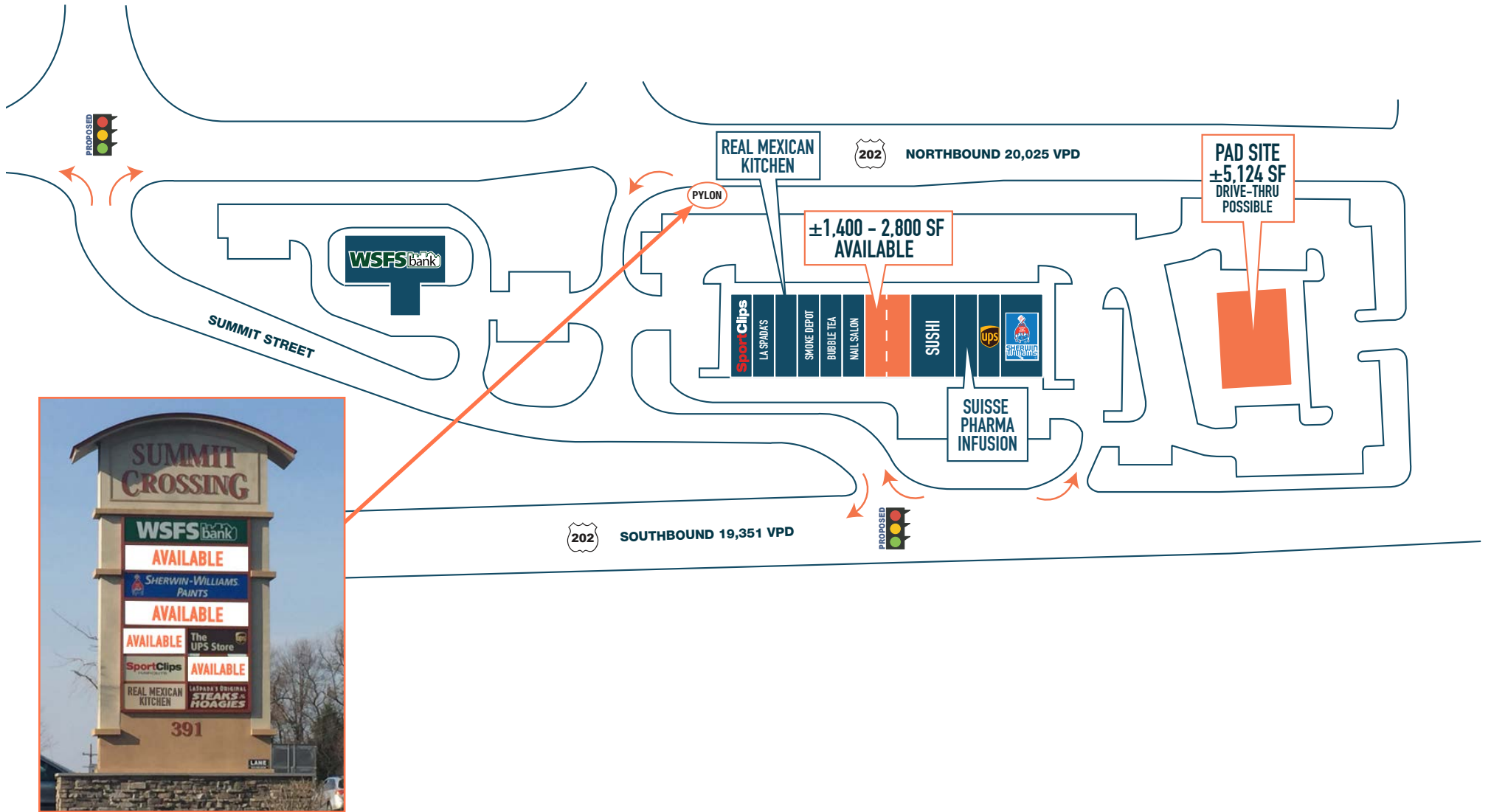
The information and images contained herein are from sources deemed reliable. However, Metro Commercial Real Estate, Inc. makes no representation whatsoever as to their accuracy or authenticity. Images shown may be modified for illustrative purposes. Images may be out-of-date and not current. 07.31.23

SUMMIT CROSSING  
**GLEN MILLS, PA**  
ROUTE 202 & SUMMIT STREET



MetroCommercial.com

# GREAT VISIBILITY NORTHBOUND AND SOUTHBOUND OF ROUTE 202



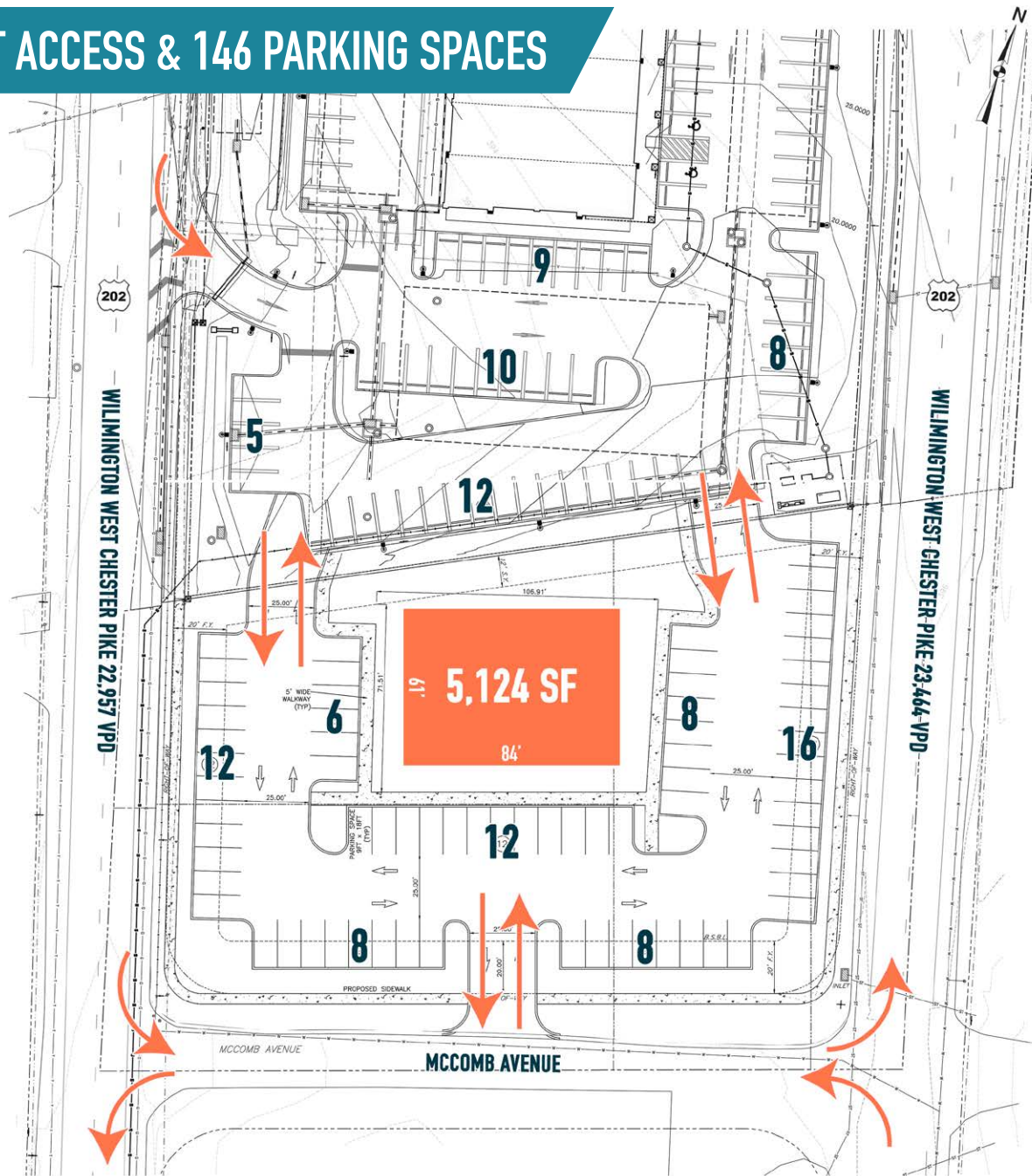
The information and images contained herein are from sources deemed reliable. However, Metro Commercial Real Estate, Inc. makes no representation whatsoever as to their accuracy or authenticity. Images shown may be modified for illustrative purposes. Images may be out-of-date and not current. 07.31.23

SUMMIT CROSSING  
**GLEN MILLS, PA**  
 ROUTE 202 & SUMMIT STREET



MetroCommercial.com

# PAD SITE WITH GREAT ACCESS & 146 PARKING SPACES



The information and images contained herein are from sources deemed reliable. However, Metro Commercial Real Estate, Inc. makes no representation whatsoever as to their accuracy or authenticity. Images shown may be modified for illustrative purposes. Images may be out-of-date and not current. 07.31.23

SUMMIT CROSSING  
**GLEN MILLS, PA**  
ROUTE 202 & SUMMIT STREET



MetroCommercial.com