

WILLIAMSPORT, PA

1844 LYCOMING CREEK ROAD

±2,800 - 13,135 SF AVAILABLE FOR LEASE

WILLIAMSPORT MSA

JOIN

weis

weis
GAS N' GO

OUTPARCEL OPPORTUNITY AT DOMINANT GROCERY-ANCHORED CENTER ON THE NORTH SIDE OF WILLIAMSPORT



LEASED BY:



METRO
COMMERCIAL
REAL ESTATE, INC.

OWNED & MANAGED BY:

weis

get in touch.

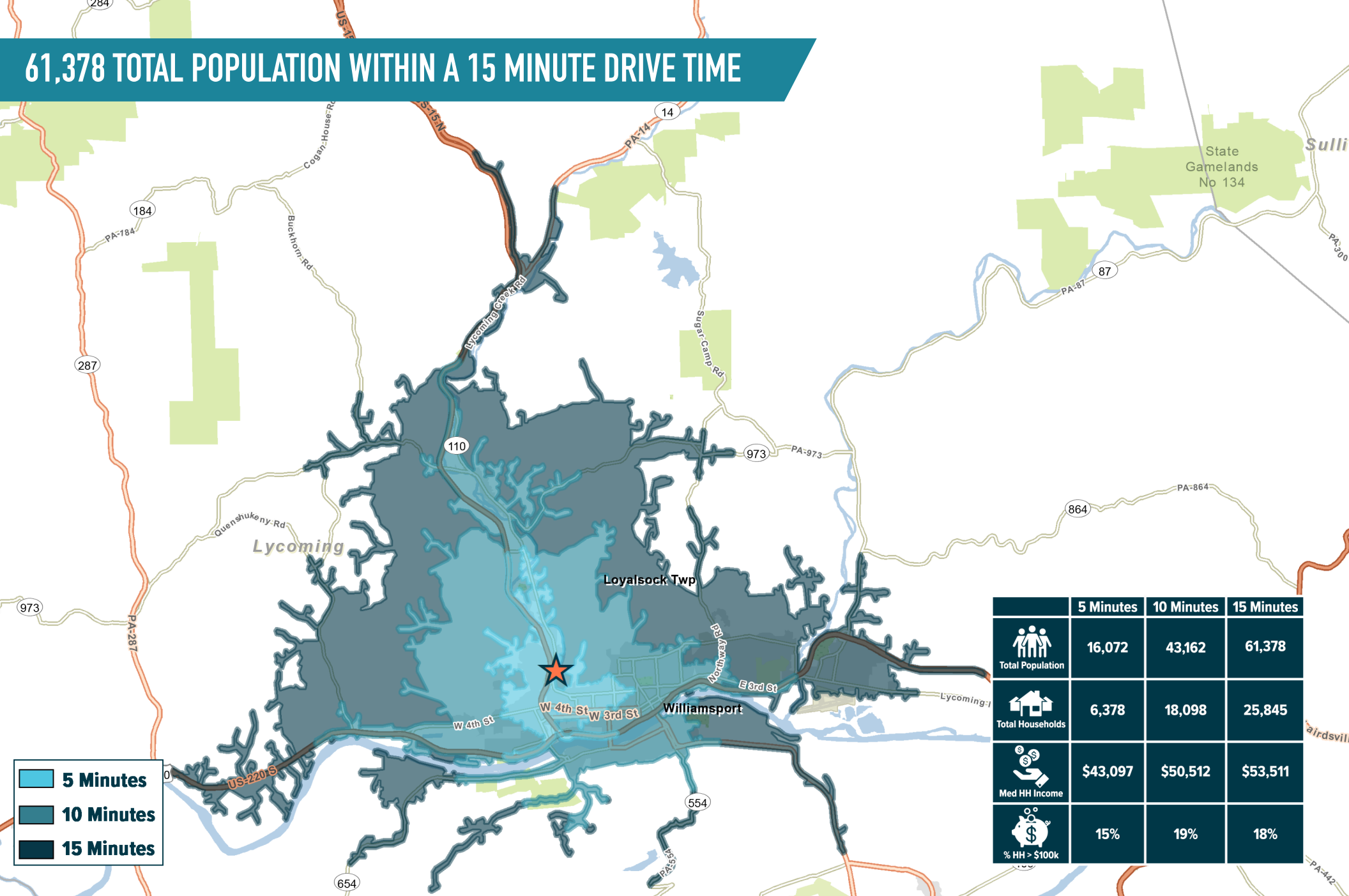
BRENDAN MULLIGAN

office 610.825.5222

direct 610.260.2688

bmulligan@metrocommercial.com

61,378 TOTAL POPULATION WITHIN A 15 MINUTE DRIVE TIME



	5 Minutes	10 Minutes	15 Minutes
Total Population	16,072	43,162	61,378
Total Households	6,378	18,098	25,845
Med HH Income	\$43,097	\$50,512	\$53,511
% HH > \$100k	15%	19%	18%

The information and images contained herein are from sources deemed reliable. However, Metro Commercial Real Estate, Inc. makes no representation whatsoever as to their accuracy or authenticity. Images shown may be modified for illustrative purposes. Images may be out-of-date and not current. 12.04.24

WILLIAMSPORT, PA
1844 LYCOMING CREEK ROAD



www.metrocommercial.com

GREAT VISIBILITY AND SIGNAGE FROM ROUTE 15



±13,135 SF
(DIVISIBLE)

LYCOMING CREEK ROAD 9,877 VPD

PYLON

CVS
pharmacy

SHUMBAT LANE

15

13,166 VPD

The information and images contained herein are from sources deemed reliable. However, Metro Commercial Real Estate, Inc. makes no representation whatsoever as to their accuracy or authenticity. Images shown may be modified for illustrative purposes. Images may be out-of-date and not current. 9-29-16

WILLIAMSPORT, PA
1844 LYCOMING CREEK ROAD

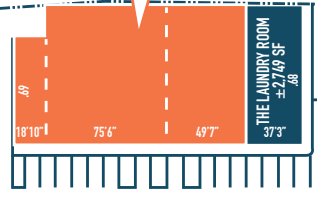


www.metrocommercial.com

PERFECT FOR RETAIL, OFFICE OR MEDICAL TENANTS



±13,135 SF
(DIVISIBLE)



LYCOMING CREEK ROAD 9,877 VPD



The information and images contained herein are from sources deemed reliable. However, Metro Commercial Real Estate, Inc. makes no representation whatsoever as to their accuracy or authenticity. Images shown may be modified for illustrative purposes. Images may be out-of-date and not current. 12.04.24

WILLIAMSPORT, PA
1844 LYCOMING CREEK ROAD



www.metrocommercial.com

PROPERTY PHOTOS



The information and images contained herein are from sources deemed reliable. However, Metro Commercial Real Estate, Inc. makes no representation whatsoever as to their accuracy or authenticity. Images shown may be modified for illustrative purposes. Images may be out-of-date and not current. 12.04.24

WILLIAMSPORT, PA
1844 LYCOMING CREEK ROAD



www.metrocommercial.com