

ROSEMORE SHOPPING CENTER  
**WARMINSTER, PA**

COUNTY LINE ROAD & NORRISTOWN ROAD, 18974

±800 - 11,500 SF AVAILABLE FOR LEASE

JOIN

**GROCERYOUTLET**  
bargain market

**Beneficial**



EXCELLENT VISIBILITY ALONG COUNTY LINE ROAD



MetroCommercial.com | PLYMOUTH MEETING, PA | MOUNT LAUREL, NJ | MIAMI, FL | PHILADELPHIA, PA

get in touch.

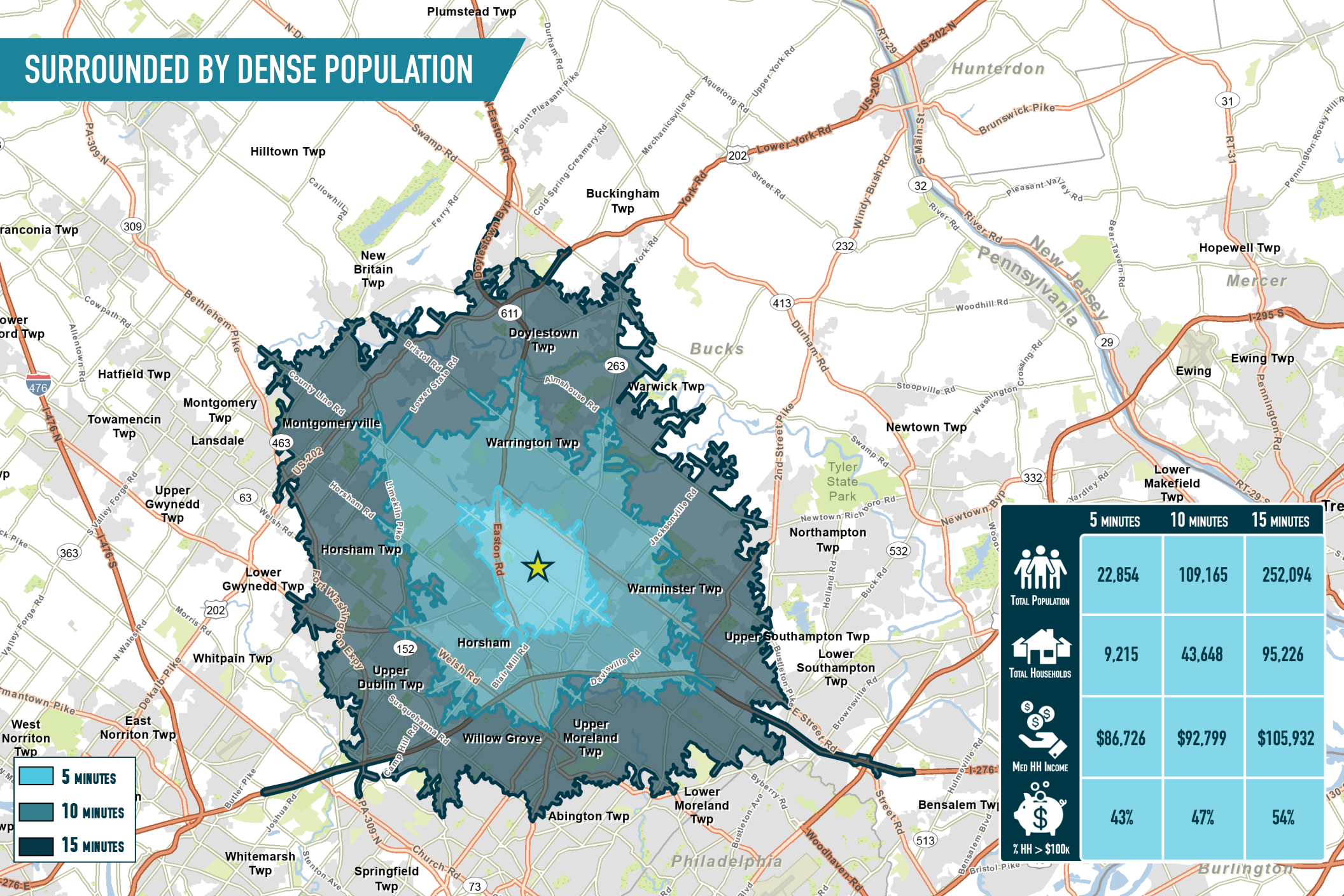
**ROB COOPER**

office 856.866.1900

direct 856.222.3054

rcooper@metrocommercial.com

# SURROUNDED BY DENSE POPULATION



■ 5 MINUTES  
■ 10 MINUTES  
■ 15 MINUTES

	5 MINUTES	10 MINUTES	15 MINUTES
TOTAL POPULATION	22,854	109,165	252,094
TOTAL HOUSEHOLDS	9,215	43,648	95,226
MED HH INCOME	\$86,726	\$92,799	\$105,932
% HH > \$100k	43%	47%	54%

The information and images contained herein are from sources deemed reliable. However, Metro Commercial Real Estate, Inc. makes no representation whatsoever as to their accuracy or authenticity. Images shown may be modified for illustrative purposes. Images may be out-of-date and not current. 11.26.24

ROSEMORE SHOPPING CENTER  
**WARMINSTER, PA**  
 COUNTY LINE ROAD & NORRISTOWN ROAD



[www.metrocommercial.com](http://www.metrocommercial.com)







# JUST SIGNED: GROCERY OUTLET BARGAIN MARKET & AARON'S

132



NORRISTOWN ROAD

STREET ROAD

OLD YORK ROAD

COUNTY LINE ROAD

**SITE**

**ROSEMORE SHOPPING CENTER**

DOLLAR TREE

GROCERY OUTLET  
*bargain market*

Beneficial DUNKIN' DONUTS

The information and images contained herein are from sources deemed reliable. However, Metro Commercial Real Estate, Inc. makes no representation whatsoever as to their accuracy or authenticity. Images shown may be modified for illustrative purposes. Images may be out-of-date and not current. 11.26.24

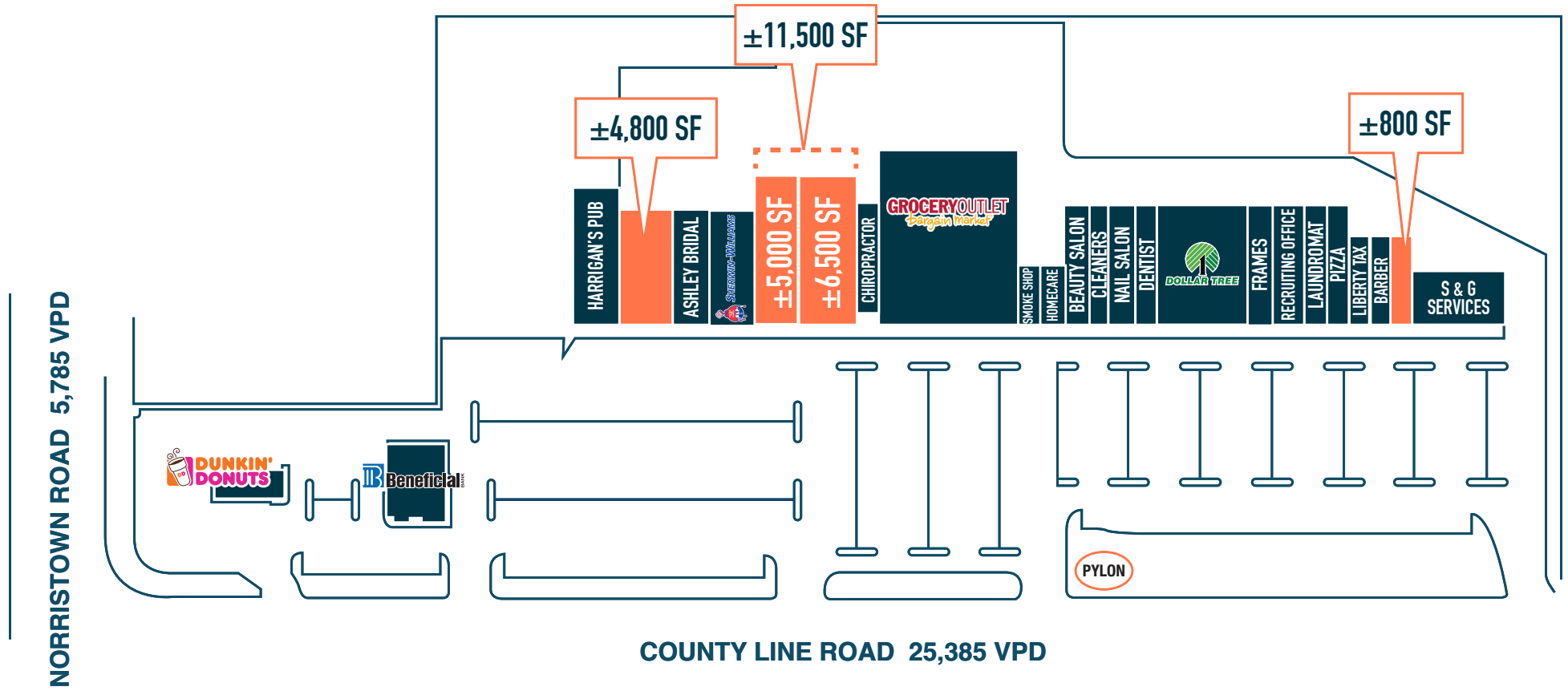
ROSEMORE SHOPPING CENTER  
**WARMINSTER, PA**  
COUNTY LINE ROAD & NORRISTOWN ROAD



[www.metrocommercial.com](http://www.metrocommercial.com)



# MULTIPLE SIZE CONFIGURATIONS



The information and images contained herein are from sources deemed reliable. However, Metro Commercial Real Estate, Inc. makes no representation whatsoever as to their accuracy or authenticity. Images shown may be modified for illustrative purposes. Images may be out-of-date and not current. 11.26.24

ROSEMORE SHOPPING CENTER  
**WARMINSTER, PA**  
 COUNTY LINE ROAD & NORRISTOWN ROAD



[www.metrocommercial.com](http://www.metrocommercial.com)

# PYLON



The information and images contained herein are from sources deemed reliable. However, Metro Commercial Real Estate, Inc. makes no representation whatsoever as to their accuracy or authenticity. Images shown may be modified for illustrative purposes. Images may be out-of-date and not current. 11.26.24

ROSEMORE SHOPPING CENTER  
**WARMINSTER, PA**  
COUNTY LINE ROAD & NORRISTOWN ROAD



[www.metrocommercial.com](http://www.metrocommercial.com)