

FORKS TOWNSHIP, PA

3825 SULLIVAN TRAIL

±2,714 SF END CAP AVAILABLE FOR LEASE

ALLENTOWN MSA

JOIN

weis **weis**
GAS N' GO

GOOD
SHEPHERD
REHABILITATION

2,700 SF AVAILABLE AT NEIGHBORHOOD WEIS MARKETS ANCHORED SHOPPING CENTER IN THE LEHIGH VALLEY



LEASED BY:



METRO
COMMERCIAL
REAL ESTATE, INC.

OWNED & MANAGED BY:

weis

get in touch.

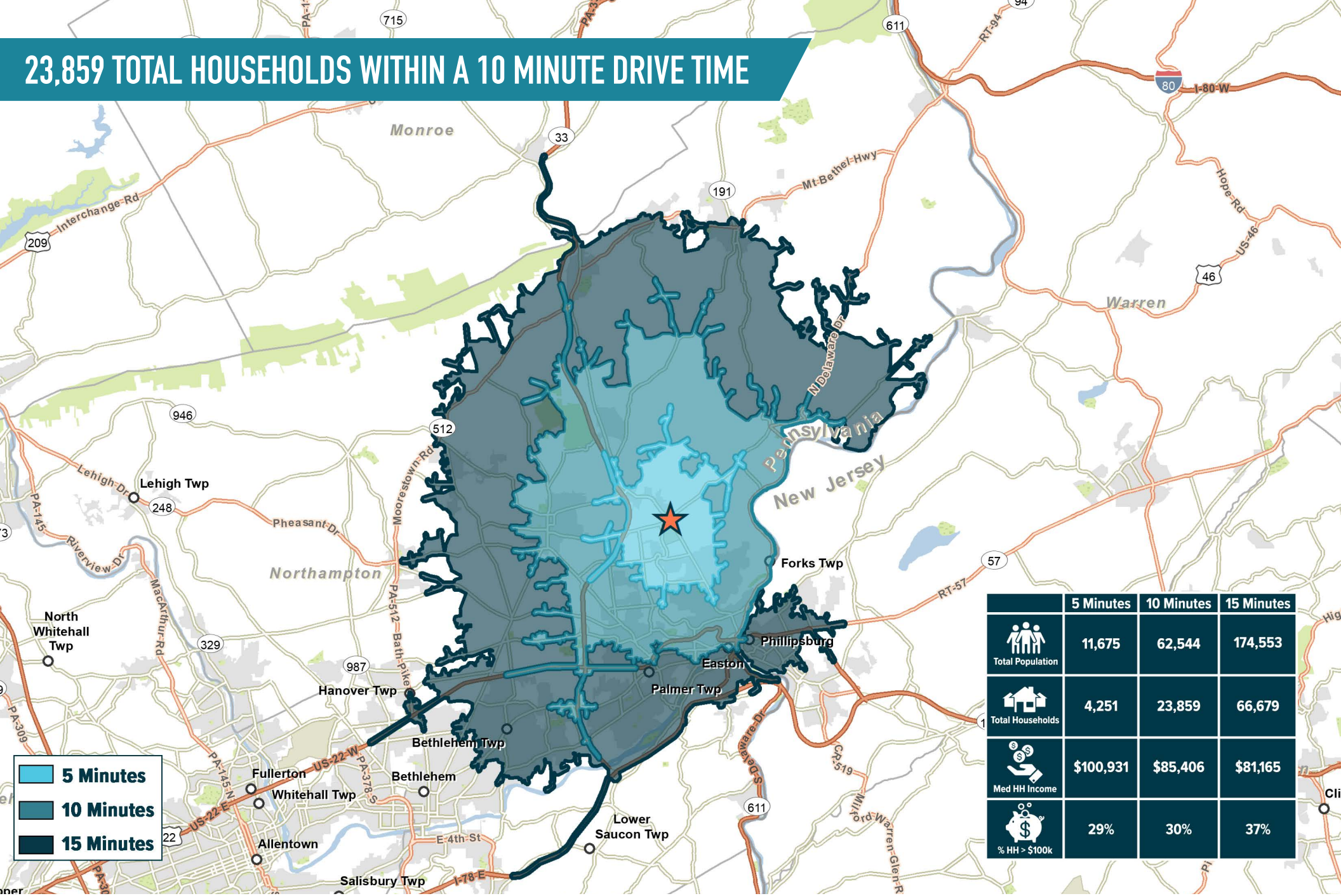
BRENDAN MULLIGAN

office 610.825.5222

direct 610.260.2688

bmulligan@metrocommercial.com

23,859 TOTAL HOUSEHOLDS WITHIN A 10 MINUTE DRIVE TIME



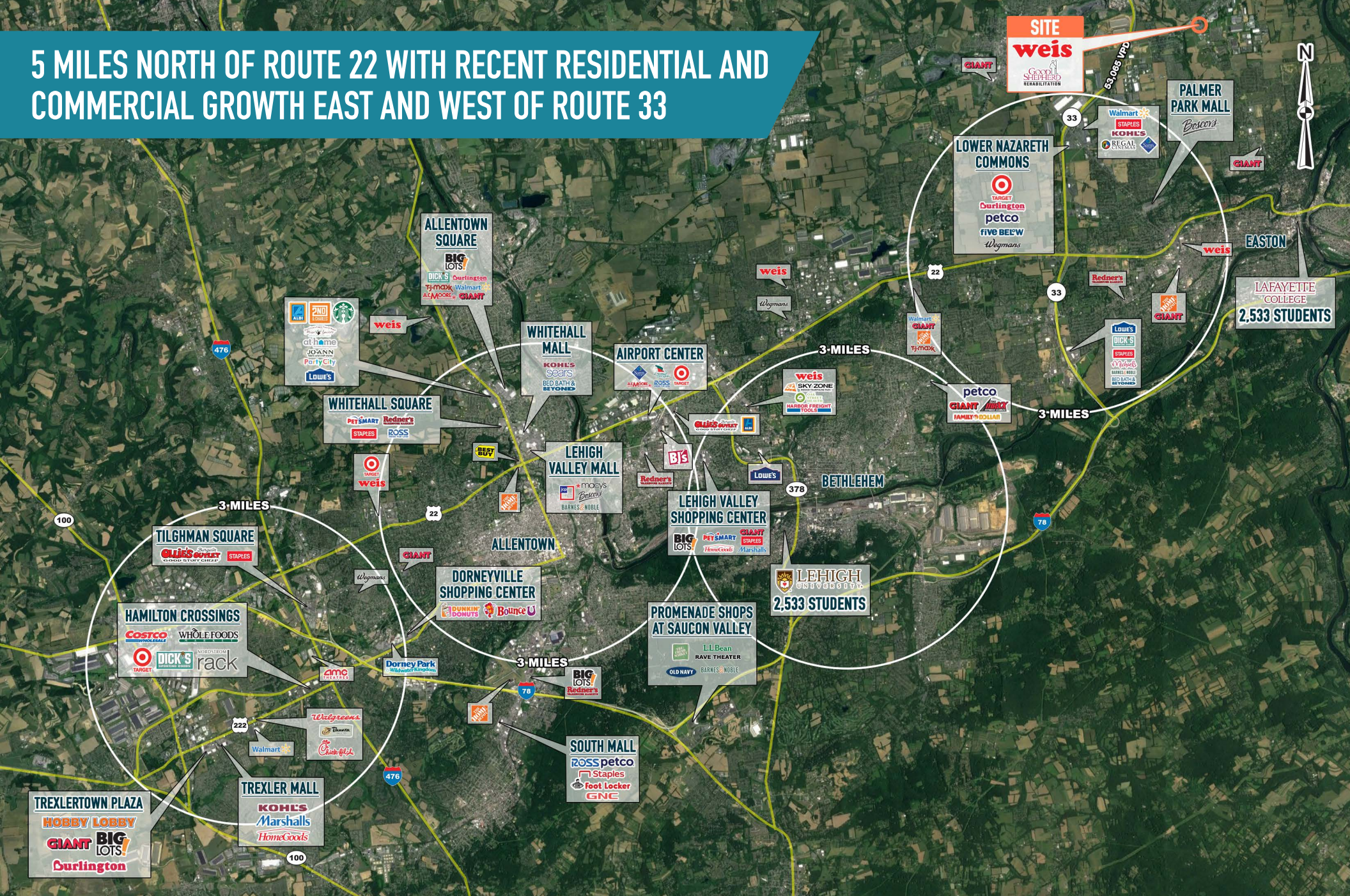
The information and images contained herein are from sources deemed reliable. However, Metro Commercial Real Estate, Inc. makes no representation whatsoever as to their accuracy or authenticity. Images shown may be modified for illustrative purposes. Images may be out-of-date and not current. 12.19.22

FORKS TOWNSHIP, PA
3825 SULLIVAN TRAIL



www.metrocommercial.com

5 MILES NORTH OF ROUTE 22 WITH RECENT RESIDENTIAL AND COMMERCIAL GROWTH EAST AND WEST OF ROUTE 33



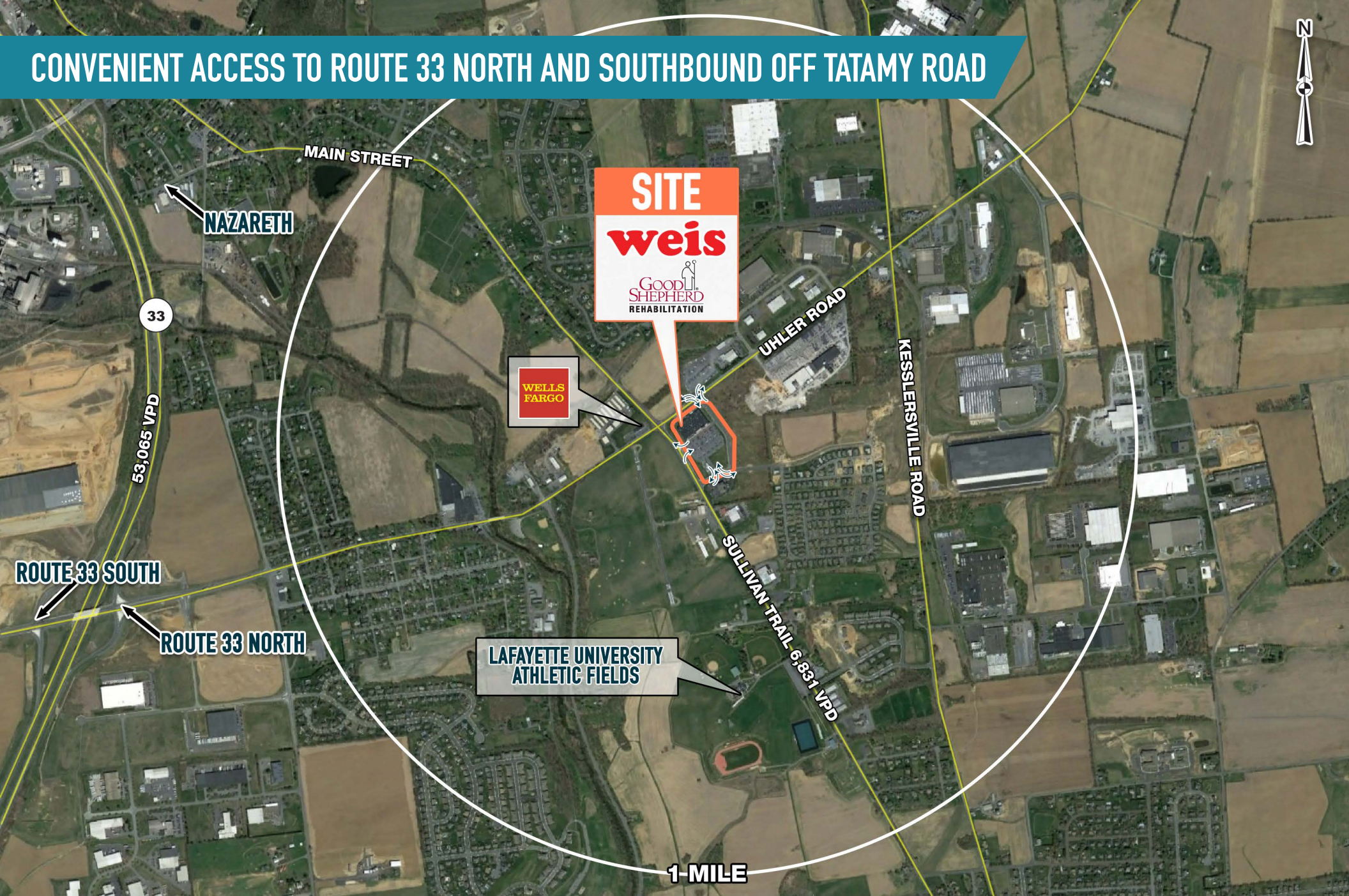
The information and images contained herein are from sources deemed reliable. However, Metro Commercial Real Estate, Inc. makes no representation whatsoever as to their accuracy or authenticity. Images shown may be modified for illustrative purposes. Images may be out-of-date and not current. 12.19.22

FORKS TOWNSHIP, PA
3825 SULLIVAN TRAIL



www.metrocommercial.com

CONVENIENT ACCESS TO ROUTE 33 NORTH AND SOUTHBOUND OFF TATAMY ROAD



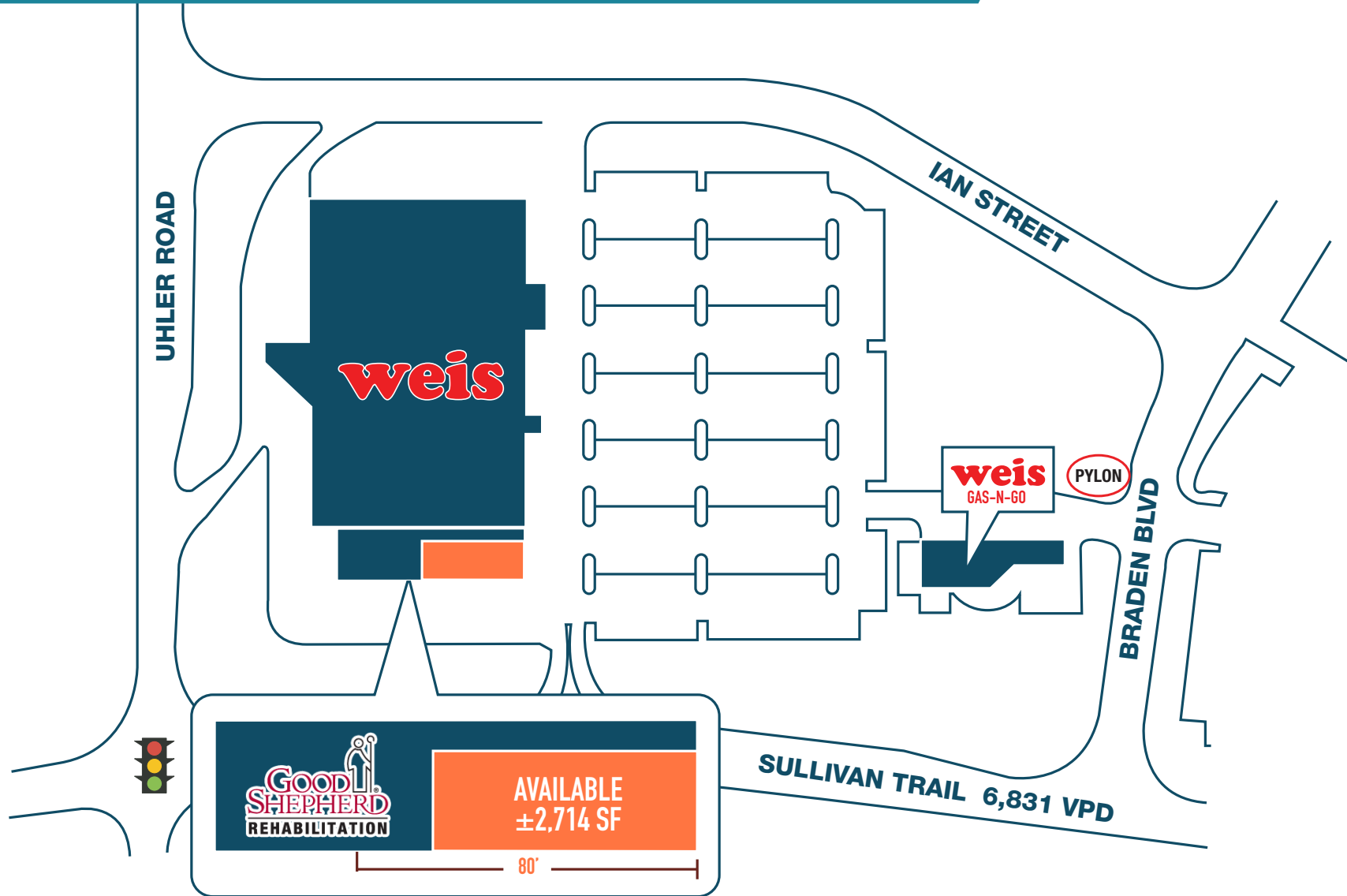
The information and images contained herein are from sources deemed reliable. However, Metro Commercial Real Estate, Inc. makes no representation whatsoever as to their accuracy or authenticity. Images shown may be modified for illustrative purposes. Images may be out-of-date and not current. 12.19.22

FORKS TOWNSHIP, PA
3825 SULLIVAN TRAIL



www.metrocommercial.com

±2,700 SF SUITABLE FOR NUMEROUS USES AT DOMINANT GROCERY ANCHORED CENTER SERVICING THE FORKS TOWNSHIP COMMUNITY



The information and images contained herein are from sources deemed reliable. However, Metro Commercial Real Estate, Inc. makes no representation whatsoever as to their accuracy or authenticity. Images shown may be modified for illustrative purposes. Images may be out-of-date and not current. 12.19.22

FORKS TOWNSHIP, PA
3825 SULLIVAN TRAIL



www.metrocommercial.com