

# ENOLA, PA

VALLEY ROAD & WERTZVILLE ROAD

PAD SITE AVAILABLE FOR LEASE; GLA: ±68,395 SF

JOIN

**weis**

**weis**  
GAS N' GO

**Drayer**  
PHYSICAL THERAPY INSTITUTE



AT&T

**SUPERCUTS**

HIGH VOLUME WEIS ANCHORED CENTER WITH PAD AVAILABLE

PAD SITE  
AVAILABLE

LEASED BY:



**METRO**  
COMMERCIAL  
REAL ESTATE, INC.

OWNED & MANAGED BY:

**weis**

get in touch.

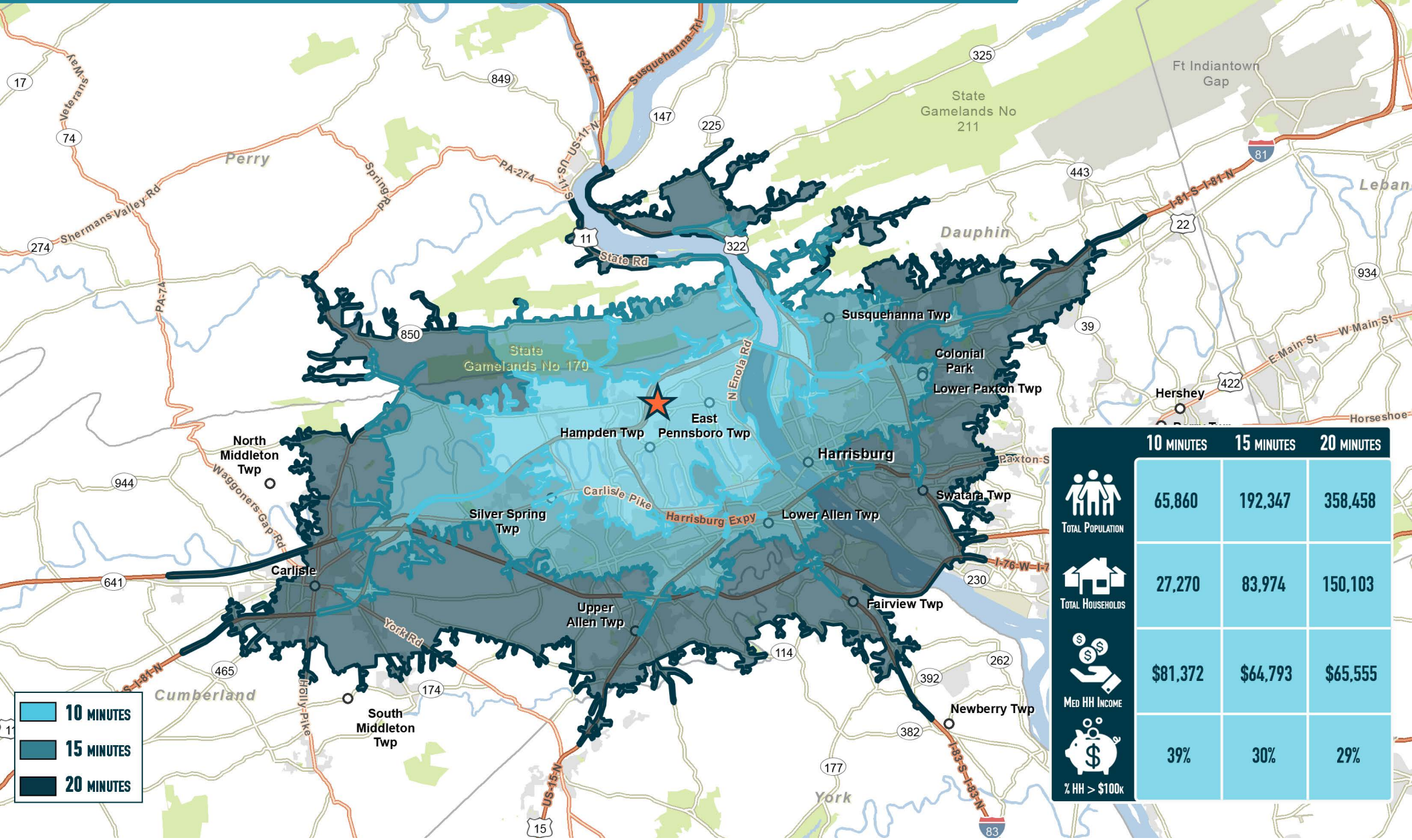
**BRENDAN MULLIGAN**

office 610.825.5222

direct 610.260.2688

[bmulligan@metrocommercial.com](mailto:bmulligan@metrocommercial.com)

# STRONG CUSTOMER BASE ON EAST AND WEST SHORE OF SUSQUEHANNA RIVER



	10 MINUTES	15 MINUTES	20 MINUTES
TOTAL POPULATION	65,860	192,347	358,458
TOTAL HOUSEHOLDS	27,270	83,974	150,103
MED HH INCOME	\$81,372	\$64,793	\$65,555
% HH > \$100k	39%	30%	29%

The information and images contained herein are from sources deemed reliable. However, Metro Commercial Real Estate, Inc. makes no representation whatsoever as to their accuracy or authenticity. Images shown may be modified for illustrative purposes. Images may be out-of-date and not current. 02.05.25

**ENOLA, PA**  
VALLEY ROAD & WERTZVILLE ROAD



[www.metrocommercial.com](http://www.metrocommercial.com)



**THE SHOPPES AT  
SUSQUEHANNA MARKETPLACE**  
 ATHLETA SEPHORA  
 LOFT TALBOTS chico's  
 WHITEHOUSE BLACK MARKET  
 WILLIAMS SONOMA J.Jill  
 LENS CRAFTERS Eddie Bauer  
 JPS BANK SalonCentric pure barre  
 Sola SALONS HAND & STONE MASSAGE AND FACIAL SPA

**COLONIAL COMMONS**  
 Marshalls  
 HomeGoods  
 ROSS DICK'S  
 HOBBY LOBBY

**SUMMERDALE PLAZA**  
 TRACTOR SUPPLY CO  
 AutoZone

**HAMPDEN MARKETPLACE**  
 GIANT

**SILVER SPRING SQUARE**  
 target Wegmans  
 BEST BUY  
 ROSS L.L.Bean  
 KOHL'S petco  
 MATTRESS FIRM

**SILVER SPRING COMMONS**  
 sam's club  
 Walmart Supercenter  
 Ocean State JOB LOT

**SITE**  
 weis

**GATEWAY SQUARE**  
 TJ-maxx  
 GROCERY OUTLET Bargain Market  
 SKY ZONE INDOOR TRAMPOLINE PARK

**CAMP HILL SC**  
 GIANT  
 Boscov's  
 LAIFITNESS  
 BARNES & NOBLE  
 five BE'W

**DAUPHIN PLAZA**  
 CRUNCH THE HOME DEPOT  
 ASHLEY

**KLING PLAZA**  
 GIANT

**UNION SQUARE SC**  
 weis Gabe's

**THE POINT SC**  
 GIANT  
 Staples  
 Burlington  
 home OUTLET Kitchens, Baths, Floors & More  
 AutoZone

**PAXTON TOWNE CENTRE**  
 THE HOME DEPOT  
 target  
 COSTCO WHOLESALE  
 KOHL'S  
 Michaels

**LOWE'S**

**REGAL**

**HARRISBURG MALL**  
 Bass Pro Shops

**HIGH POINTE COMMONS**  
 target  
 JCPenney  
 petco

**HAMPDEN COMMONS**  
 Marshalls  
 HomeGoods  
 PETSMART  
 ASHLEY  
 CRUNCH THE HOME DEPOT  
 OLLIE'S GOOD STUFF CHEF  
 HOBBY LOBBY  
 Burlington

**ALDI**

**AMC**

**GIANT**

**weis**

**planet fitness**

**TRADER JOE'S**

**CAPITAL CITY MALL**  
 ±614,000 SF  
 macys  
 DICK'S SPORTING GOODS  
 H&M  
 SPORTSMAN'S WAREHOUSE  
 DSW FOREVER 21  
 Walmart

**KARNS**

**weis**

**GROCERY OUTLET Bargain Market**

**GIANT**

**CAPITAL CITY AIRPORT**

Shepherdstown

The information and images contained herein are from sources deemed reliable. However, Metro Commercial Real Estate, Inc. makes no representation whatsoever as to their accuracy or authenticity. Images shown may be modified for illustrative purposes. Images may be out-of-date and not current. 02.05.25



The information and images contained herein are from sources deemed reliable. However, Metro Commercial Real Estate, Inc. makes no representation whatsoever as to their accuracy or authenticity. Images shown may be modified for illustrative purposes. Images may be out-of-date and not current. 1.16.25

**ENOLA, PA**  
VALLEY ROAD & WERTZVILLE ROAD



[www.metrocommercial.com](http://www.metrocommercial.com)



The information and images contained herein are from sources deemed reliable. However, Metro Commercial Real Estate, Inc. makes no representation whatsoever as to their accuracy or authenticity. Images shown may be modified for illustrative purposes. Images may be out-of-date and not current. 02.05.25

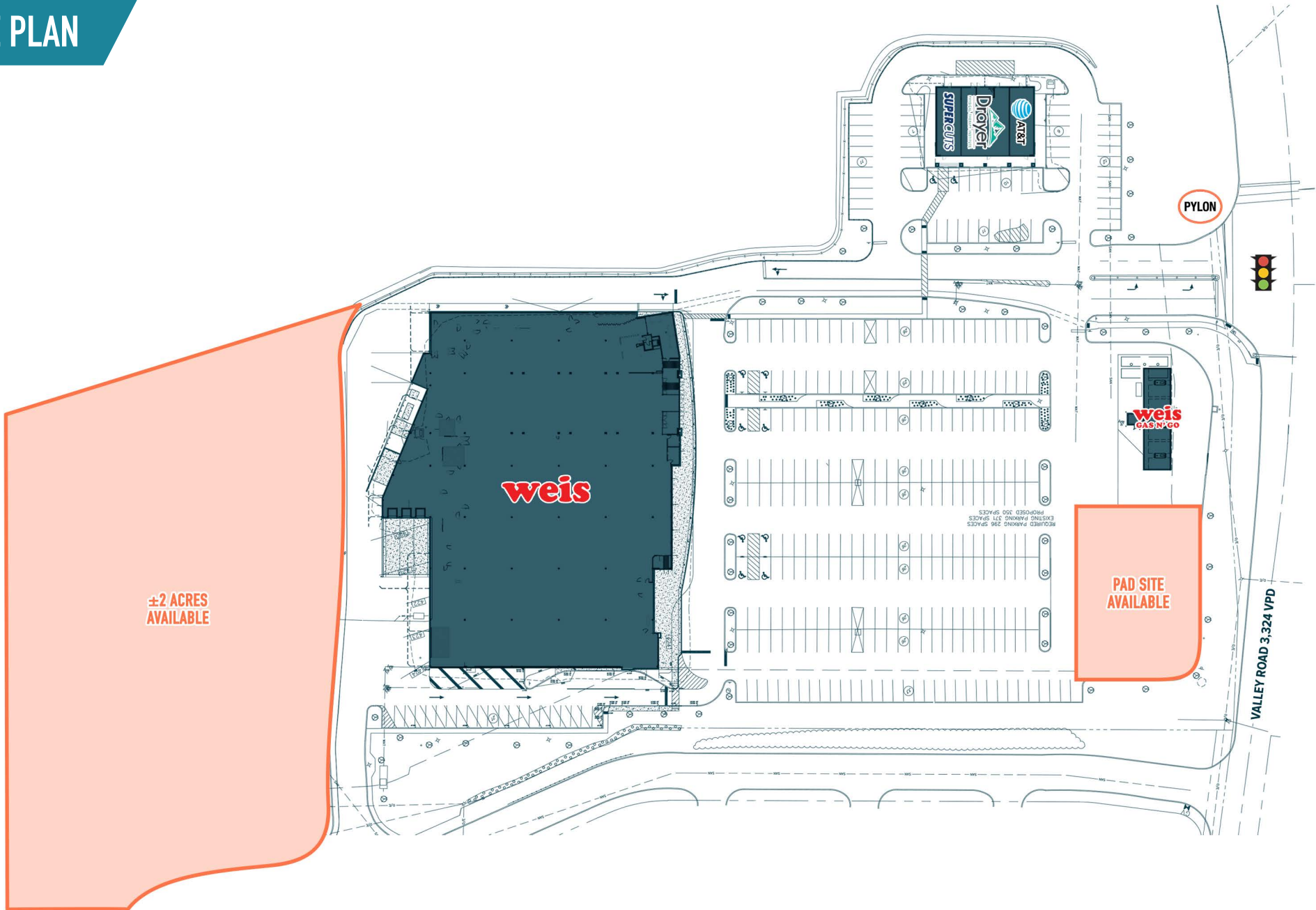
# ENOLA, PA

VALLEY ROAD & WERTZVILLE ROAD



[www.metrocommercial.com](http://www.metrocommercial.com)

# SITE PLAN



The information and images contained herein are from sources deemed reliable. However, Metro Commercial Real Estate, Inc. makes no representation whatsoever as to their accuracy or authenticity. Images shown may be modified for illustrative purposes. Images may be out-of-date and not current. 02.05.25

**ENOLA, PA**  
VALLEY ROAD & WERTZVILLE ROAD



[www.metrocommercial.com](http://www.metrocommercial.com)